



0458 Steel scale tapes for circumference and diameter



0458 104



0458 102

Model

- Factory standard
- Vernier 0.1 mm
- Main scale graduation 1 mm

Delivery

- Cardboard box

☒	☒	For circumference mm	For dia. mm	Order no.	List price EUR
Spring band steel					
		60 - 950	20 - 300	0458 102	43.20
		940 - 2200	300 - 700	0458 103	52.00
		2190 - 3460	700 - 1100	0458 104	67.00
		3450 - 4720	1100 - 1500	0458 105	81.00
		4710 - 5980	1500 - 1900	0458 106	96.00
		5960 - 7230	1900 - 2300	0458 107	111.00
		7220 - 8500	2300 - 2700	0458 108	273.00
		8480 - 9760	2700 - 3100	0458 109	292.00
		9730 - 11010	3100 - 3500	0458 110	376.00
		11000 - 12260	3500 - 3900	0458 111	576.00
		12250 - 13500	3900 - 4300	0458 112	588.00
		13500 - 14760	4300 - 4700	0458 113	599.00
Stainless spring band steel					
		60 - 950	20 - 300	0458 202	77.00
		940 - 2200	300 - 700	0458 203	97.00
		2190 - 3460	700 - 1100	0458 204	119.00
		3450 - 4720	1100 - 1500	0458 205	157.00
		4710 - 5980	1500 - 1900	0458 206	190.00



0454 Straight edges, with bevelled edge





Model

- Special steel
- Zinc coated
- Factory standard

Delivery

- Cardboard box
- From 2000 mm in transportation box

 	Length mm	Cross-section mm	Order no.	List price EUR
	400	40 x 5	0454 424	10.60
	500	40 x 5	0454 428	13.20
▪	1000	40 x 5	0454 434	26.20
▪	1500	40 x 5	0454 438	47.60
▪	2000	40 x 5	0454 440	73.00
▪	3000	50 x 8	0454 444	191.00

0455 Straight edges with bevelled edge, mm graduation





Model

- Special steel
- Zinc coated
- Factory standard
- Graduated scale begins directly on the end of rule, the other end has a 10 mm protective end

Delivery

- Cardboard box
- From 2000 mm in transportation box

 	Length mm	Cross-section mm	Order no.	List price EUR
	400	40 x 5	0455 424	19.50
	500	40 x 5	0455 428	24.40
▪	1000	40 x 5	0455 434	46.30
▪	1500	40 x 5	0455 438	83.00
▪	2000	40 x 5	0455 440	121.00
▪	3000	50 x 8	0455 444	255.00

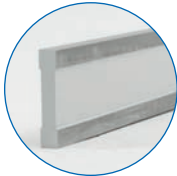




0464 Steel rules made of special steel, accuracy grade 0



rectangular cross section



I shaped cross section, 2 hand slots

Model

- Special steel
- Measuring surfaces are finely grinded
- Flatness of measuring surfaces according to DIN 874

Delivery

- Cardboard box
- From 2000 mm in transportation box

		Length mm	Cross-section mm	Order no.	List price EUR
Special steel, rectangular cross section					
		500	50 x 10	0464 101	75.00
		750	50 x 10	0464 102	106.00
		1000	60 x 12	0464 103	166.00
	▪	1500	70 x 15	0464 104	280.00
Special steel, I shaped cross section, 2 hand slots					
	▪	2000	80 x 15	0464 105	502.00
	▪	2500	100 x 16	0464 106	853.00
	▪	3000	120 x 20	0464 107	1309.00
	▪	4000	140 x 20	0464 108	2249.00

0465 Steel rules made of special steel, accuracy grade 1

		Length mm	Cross-section mm	Order no.	List price EUR
Special steel, rectangular cross section					
		500	40 x 8	0465 101	36.50
		750	50 x 10	0465 102	60.00
		1000	50 x 10	0465 103	82.00
	▪	1500	60 x 12	0465 104	149.00
Special steel, I shaped cross section, 2 hand slots					
	▪	2000	70 x 15	0465 105	303.00
	▪	2500	80 x 15	0465 106	566.00
	▪	3000	100 x 16	0465 107	972.00
	▪	4000	120 x 20	0465 108	1570.00

0466 Steel rules made of special steel, accuracy grade 2

		Length mm	Cross-section mm	Order no.	List price EUR
Special steel, rectangular cross section					
		500	30 x 6	0466 101	25.10
		750	40 x 8	0466 102	44.00
		1000	40 x 8	0466 103	51.00
	▪	1500	50 x 10	0466 104	96.00
	▪	2000	60 x 12	0466 105	131.00
	▪	2500	70 x 15	0466 106	289.00
	▪	3000	80 x 15	0466 107	451.00
Special steel, I shaped cross section, 2 hand slots					
	▪	4000	100 x 16	0466 108	1072.00



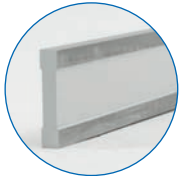
0464 Steel rules made of stainless steel, accuracy grade 0



rectangular cross section



I shaped cross section, 2 hand slots



Model

- Special steel
- Measuring surfaces are finely grinded
- Flatness of measuring surfaces according to DIN 874

Delivery

- Cardboard box
- From 2000 mm in transportation box

☒ ☒	Length mm	Cross-section mm	Order no.	List price EUR
Stainless steel, rectangular cross section				
	500	50 x 10	0464 201	118.00
	750	50 x 10	0464 202	161.00
	1000	60 x 12	0464 203	303.00
▪	1500	70 x 15	0464 204	502.00
Stainless steel, I shaped cross section, 2 hand slots				
▪	2000	80 x 15	0464 205	928.00
▪	2500	100 x 16	0464 206	1615.00
▪	3000	120 x 18	0464 207	2856.00
▪	4000	140 x 20	0464 208	5095.00

0465 Steel rules made of stainless steel, accuracy grade 1



☒ ☒	Length mm	Cross-section mm	Order no.	List price EUR
Stainless steel, rectangular cross section				
	500	40 x 8	0465 201	67.00
	750	50 x 10	0465 202	103.00
	1000	50 x 10	0465 203	185.00
▪	1500	60 x 12	0465 204	289.00
Stainless steel, I shaped cross section, 2 hand slots				
▪	2000	70 x 15	0465 205	681.00
▪	2500	80 x 15	0465 206	1037.00
▪	3000	100 x 16	0465 207	1998.00
▪	4000	120 x 18	0465 208	2942.00

0466 Steel rules made of stainless steel, accuracy grade 2



☒ ☒	Length mm	Cross-section mm	Order no.	List price EUR
Stainless steel, rectangular cross section				
	500	30 x 6	0466 201	43.20
	750	40 x 8	0466 202	76.00
	1000	40 x 8	0466 203	111.00
▪	1500	50 x 10	0466 204	230.00
▪	2000	60 x 12	0466 205	388.00
▪	2500	70 x 15	0466 206	645.00
▪	3000	80 x 15	0466 207	921.00
Stainless steel, I shaped cross section, 2 hand slots				
▪	4000	100 x 16	0466 208	1715.00



0512 Knife edge rules



0512 101

DIN
874

Model

- DIN 874 Sheet 2, accuracy grade 00
- Thermally insulated
- Pointed tip at one end
- Special steel: glare free and burnished knife edge
- Stainless steel: non glare knife edge up to 500 mm

Delivery

- Up to 500 mm in imitation leather case. From 500 mm individually packed

Length mm	Cross-section mm	Order no.	List price EUR
Special steel, hardened and grinded			
75	25 x 5	0512 101	11.90
100	25 x 5	0512 102	13.30
125	25 x 5	0512 103	15.00
150	25 x 5	0512 104	17.10
200	29 x 7	0512 105	22.30
300	29 x 7	0512 106	41.90
400	33 x 10	0512 107	75.00
500	33 x 10	0512 108	118.00
Stainless steel, hardened and grinded			
75	25 x 5	0512 201	15.50
100	25 x 5	0512 202	18.10
125	25 x 5	0512 203	18.90
150	25 x 5	0512 204	21.10
200	29 x 7	0512 205	24.40
300	29 x 7	0512 206	53.00
400	33 x 10	0512 207	96.00
500	33 x 10	0512 208	131.00
600	45 x 10	0512 209	253.00
750	60 x 12	0512 210	512.00
1000	60 x 12	0512 211	671.00

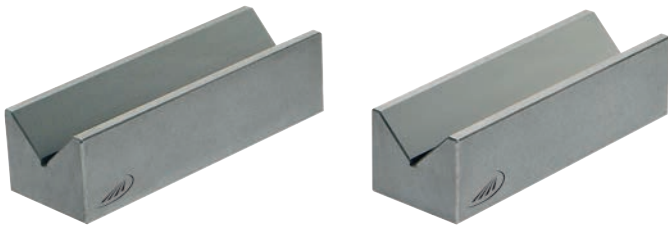
0512 Wooden cases for knife edge rules



Length mm	Order no.	List price EUR
75	0512 601	6.10
100	0512 602	6.10
125	0512 603	6.10
150	0512 604	7.40
200	0512 605	8.60
300	0512 606	9.70
400	0512 607	12.20
500	0512 608	18.40
600	0512 609	18.40
750	0512 610	36.70
1000	0512 611	42.80



0504 V-blocks (pair)



Model

- Special cast iron
- 90° grooves
- Machined in pairs

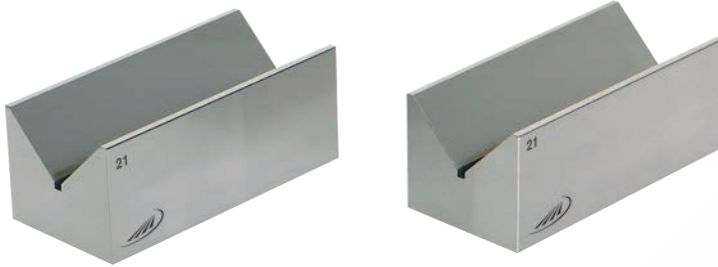
Delivery

- In pairs
- Cardboard box

		Base dimensions mm	For shaft dia. mm	Accuracy grade	Order no.	List price EUR
Parallelism tolerance < 0.008 mm, V-grooves and base finely grinded						
		100 x 40 x 30	6 - 40	0	0504 012	105.00
		150 x 50 x 40	8 - 50	0	0504 013	164.00
		200 x 70 x 50	8 - 70	0	0504 014	252.00
Parallelism tolerance < 0.016 mm, V-grooves and base grinded						
		100 x 40 x 30	6 - 40	1	0504 112	75.00
		150 x 50 x 40	8 - 50	1	0504 113	100.00
		200 x 70 x 50	8 - 70	1	0504 114	164.00
Parallelism tolerance < 0.064 mm, V-grooves and base milled						
		100 x 40 x 30	6 - 40	3	0504 312	52.00
		150 x 50 x 40	8 - 50	3	0504 313	76.00
		200 x 70 x 50	8 - 70	3	0504 314	124.00



0520 V-blocks (pair)



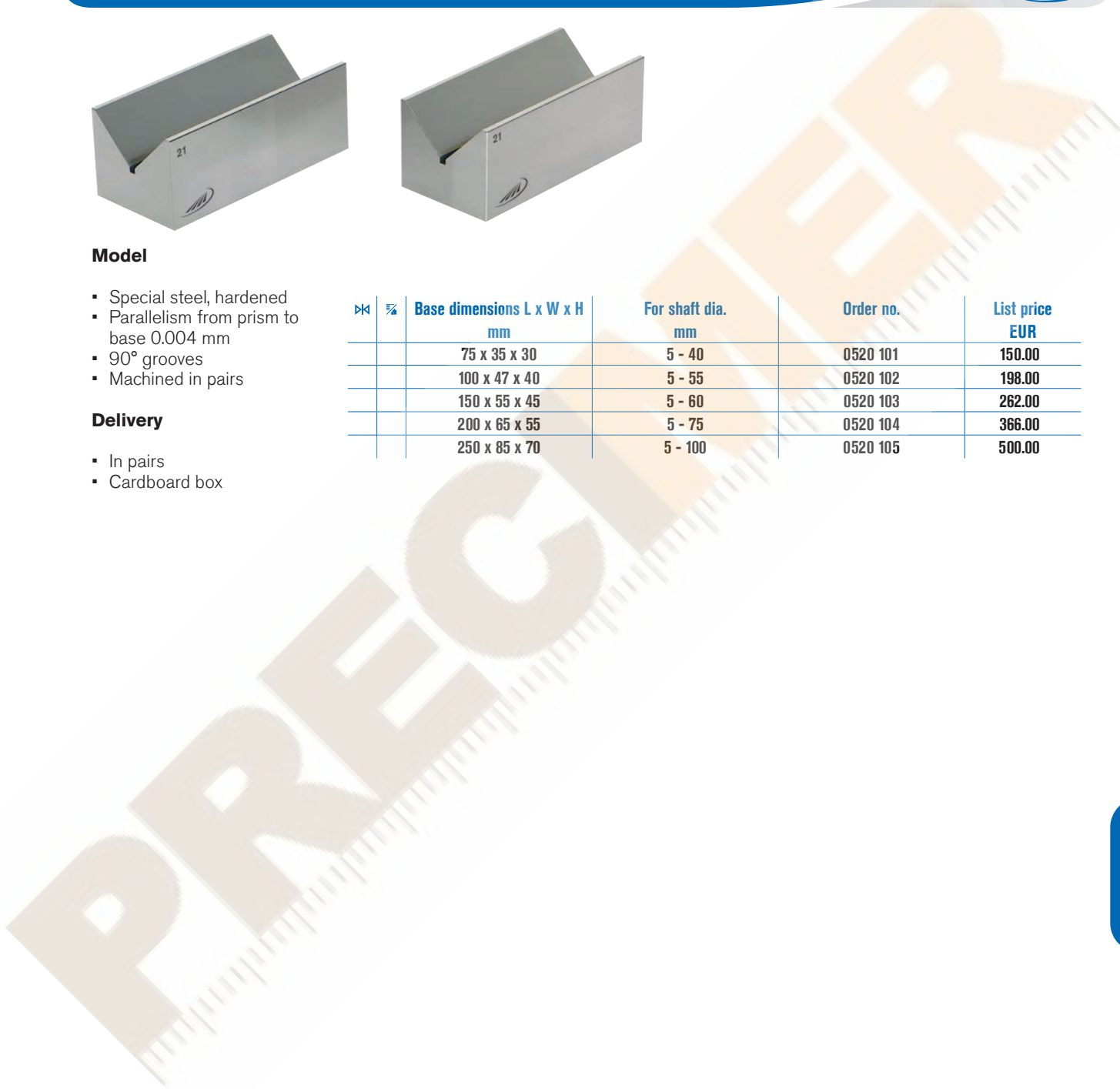
Model

- Special steel, hardened
- Parallelism from prism to base 0.004 mm
- 90° grooves
- Machined in pairs

Delivery

- In pairs
- Cardboard box

☒	☒	Base dimensions L x W x H mm	For shaft dia. mm	Order no.	List price EUR
		75 x 35 x 30	5 - 40	0520 101	150.00
		100 x 47 x 40	5 - 55	0520 102	198.00
		150 x 55 x 45	5 - 60	0520 103	262.00
		200 x 65 x 55	5 - 75	0520 104	366.00
		250 x 85 x 70	5 - 100	0520 105	500.00





0522 V-blocks with clamp




Specification

- Stainless special steel, hardened
- Parallelism from prism to base 0,004 mm
- 2 x 90° grooves

Delivery

- Cardboard box

	Dimensions L x W x H mm	For shaft dia. mm	Order no.	List price EUR
	50 x 40 x 40	5 - 30	0522 201	150.00
	75 x 55 x 55	5 - 50	0522 202	183.00
	100 x 75 x 75	7 - 70	0522 203	263.00

0522 Double V-blocks (pairs) with clamp




Specification

- Stainless special steel, hardened
- Parallelism from prism to base 0,004 mm

- 2 x 90° grooves
- Machined in pairs

Delivery

- In pairs
- Cardboard box

	Dimensions L x W x H mm	For shaft dia. mm	Order no.	List price EUR
Special steel, hardened				
	50 x 40 x 40	5 - 30	0522 101	230.00
	75 x 55 x 55	5 - 50	0522 102	281.00
	100 x 75 x 75	7 - 70	0522 103	405.00
Stainless special steel, hardened				
	50 x 40 x 40	5 - 30	0522 206	286.00
	75 x 55 x 55	5 - 50	0522 207	348.00
	100 x 75 x 75	7 - 70	0522 208	500.00



0524 Double V-blocks (pairs) with clamp lateral tilting



Specification

- Stainless special steel, hardened
- Flatness, parallelism and symmetry tolerance 0.004 mm
- Right-angled tolerance faces to prism 0.01
- 2 x 90° grooves
- Machined in pairs

Delivery

- In pairs
- Cardboard box

		Dimensions mm	For shaft dia. mm	Order no.	List price EUR
		60 x 58 x 40	5 - 30	0524 101	254.00
		75 x 70 x 54	5 - 30	0524 102	314.00
		100 x 96 x 75	7 - 70	0524 103	472.00

0522 Clamp for double V-blocks



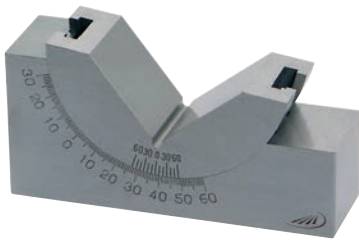
Delivery

- In pairs
- Cardboard box

		Suitable for prisms	Order no.	List price EUR
		0522 201 / 0522 101 / 0522 206 / 0524 101	0522 111	36.10
		0522 202 / 0522 102 / 0522 207 / 0524 102	0522 112	41.70
		0522 203 / 0522 103 / 0522 208 / 0524 103	0522 113	51.00



0525 Adjustable V-blocks 0-60°



Model

- Special steel, hardened
- Locking device
- Vernier reading

Delivery

- Cardboard box

Dimensions mm	For shaft dia. mm	Order no.	List price EUR
75 x 25 x 33	4 - 28	0525 101	136.00
102 x 30 x 46	4 - 40	0525 102	145.00
102 x 46 x 46	4 - 40	0525 103	155.00

0536 Set of parallel blocks



0536 202



0536 211

Model

- Special steel, hardened

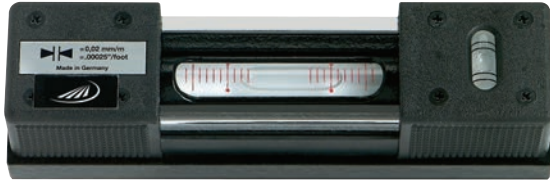
Delivery

- Wooden case

Measuring range mm	Height mm	Width mm	Number of devices	Height tolerance µm	Order no.	List price EUR
Set consists of 9 pairs, length 100 mm						
10 - 42	10 / 14 / 18 / 22 / 26 / 30 / 34 / 38 / 42	4	9	± 5	0536 220	117.00
Set consists of 9 pairs, length 150 mm						
10 - 42	10 / 14 / 18 / 22 / 26 30 / 34 / 38 / 42	4	9	± 5	0536 230	159.00
Set consists of 14 pairs, length 150 mm						
14 - 50	14 / 16 / 18 / 20 22 / 24 / 26 / 28 30 / 32 / 35 / 40 45 / 50	10	14	± 5	0536 202	494.00



0550 Machine levels



DIN 877

Model

- DIN 877
- V-groove in the base
- Longitudinal level grinded and graduated
- Transverse level
- Thermally insulated

Delivery

- Case

⊗	☒	Length mm	Order no.	List price EUR
Reading 0.02 mm/m				
		160	0550 021	318.00
		200	0550 022	349.00
		250	0550 023	380.00
		300	0550 024	412.00
Reading 0.1 mm/m				
		160	0550 101	225.00
		200	0550 102	256.00
		250	0550 103	288.00
		300	0550 104	318.00
Reading 0.3 mm/m				
		160	0550 131	175.00
		200	0550 132	206.00
		250	0550 133	236.00
		300	0550 134	268.00

0556 Frame levels



DIN 877

Model

- DIN 877
- V-grooves on 3 sides
- Longitudinal level
- Grinded and graduated
- Transverse level
- Thermally insulated

Delivery

- Case

⊗	☒	Dimensions mm	Order no.	List price EUR
Reading 0.02 mm/m				
		150 x 150	0556 022	611.00
		200 x 200	0556 023	698.00
		300 x 300	0556 024	983.00
Reading 0.1 mm/m				
		100 x 100	0556 101	375.00
		150 x 150	0556 102	437.00
		200 x 200	0556 103	547.00
		300 x 300	0556 104	872.00



0563 Magnetic angle gauge



Model

- Centre punch
- Dial face 360°
- Magnetic 90° splayed base

Delivery

- Cardboard box

	Order no.	List price
	0563 001	EUR 470.00

0580 Combined lathe and thread cutting gauge

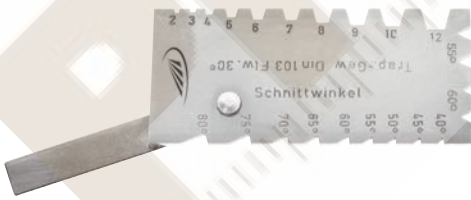


Model

- Special steel
- Cuts for trapezoidal (Acme), Whitworth and metric threads

	Dimensions	Measuring range	Order no.	List price
	mm 90 x 40 x 2	in ° 40-80°	0580 101	EUR 8.40

0580 Combined lathe and thread cutting gauge



Model

- Special steel
- Cuts for trapezoidal (Acme), Whitworth and metric threads
- With clearance angle

	Dimensions	Measuring range	Order no.	List price
	mm 90 x 40 x 2	in ° 0-30° and 40-80°	0580 111	EUR 12.10





0580 Combined lathe and thread cutting gauge



Model

- Special steel
- For square threads and trapezoidal threads, Whitworth and metric threads

	Dimensions mm	Order no.	List price EUR
	90 x 40 x 2	0580 121	8.50

0595 ACME Thread gauge



Model

- Special steel
- Cuts for trapezoidal threads

	Dimensions mm	Type of thread	Order no.	List price EUR
	60 x 20 x 2	Trapezoidal threads	0595 130	3.50

0595 Thread cutting gauge



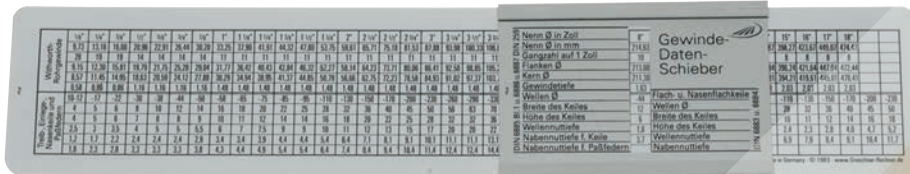
Model

- Special steel
- Cuts for Whitworth or metric threads

	Dimensions mm	Type of thread	Order no.	List price EUR
Metric ISO - threads 60°				
	74 x 24 x 2	Whitworth-thread	0595 142	3.10
Whitworth - threads 55°				
	74 x 24 x 2	Whitworth-thread	0595 140	3.10



0581 DIN thread conversion and fit slide rules



0581 101

Model

- For reading the most important theoretical dimensions of thread tolerance



0581 123

Description	Order no.	List price EUR
Aluminium anodized		
Fine thread slide rule	0581 101	24.40
DIN thread slide rule	0581 103	16.50
DIN fit slide rule	0581 105	22.60
Plastic		
DIN thread slide rule	0581 123	11.90
DIN fit slide rule	0581 125	10.40

0582 ISO thread converter - Filetor



Model

- For direct reading of all standard information for determining of threads
- Plastic housing

Dimensions mm	Order no.	List price EUR
60 x 30 x 110	0582 110	75.00



0582 ISO tolerance indicator - Tolerator



Model

- For direct reading of all standard information of all ISO-tolerance values
- Plastic housing

		Dimensions	Order no.	List price
		mm		EUR
		60 x 30 x 110	0582 120	75.00

0582 mm/inch converter

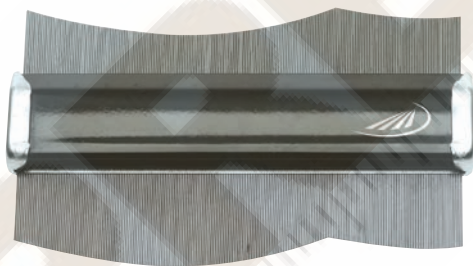


Model

- Direct reading of inch to millimeter conversion
- Plastic housing

		Dimensions	Order no.	List price
		mm		EUR
		60 x 30 x 110	0582 130	75.00

0589 Profile gauge



Model

- Spring pins
- Pin-dia. 1.0 mm

		Dimensions	Order no.	List price
		mm		EUR
		154 x 85	0589 101	19.10
		350 x 150	0589 103	59.00

0595 Welding gauge blank



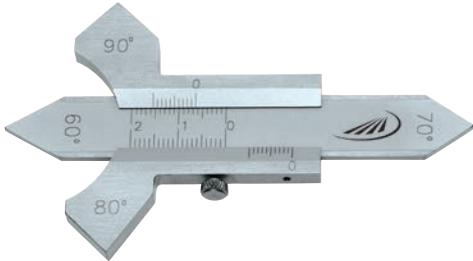
Model

- Special steel
- Pure
- For easy testing of fillet weld thicknesses of rectangular parts

		For measuring range	Order no.	List price
		mm		EUR
		3 - 12	0595 110	14.90



0595 Welding gauge



Ausführung

- Special steel
- Locking screw
- Angel 60°, 70°, 80° and 90°
- to measure the height of flat welds and fillet weld thicknesses

For measuring range	Reading	Order no.	List price
mm	mm		EUR
20 mm	0,10	0595 101	23,90

4,30

0595 Welding gauge blank



Model

- Aluminium
- Pure, for fast reading of the weld dimensions

For measuring range	Order no.	List price
mm		EUR
0 - 5	0595 115	4,30

0595 Welding gauge



Model

- Stainless steel
- Reading accuracy 0.2 mm
- Easy to read the result due to the reference line in the reading window
- Quick and easy inspection of welding seam heights

Dimensions	Order no.	List price
mm		EUR
108 x 81.5 x 3.2	0595 251	103,00



0597 Radius gauge



Model

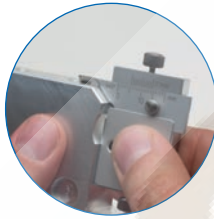
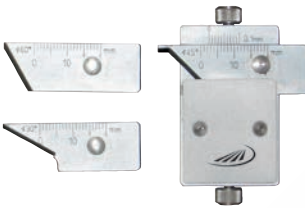
- To determine radius size work-pieces
- Stainless steel
- Reading parts are satin chrome finished

Delivery

- Plastic case
- Interchangeable blade: 45°

Measuring range mm	Reading mm	Order no.	List price EUR
0 - 10	0.10	0597 305	198.00

0597 Chamfer gauge



Model

- Stainless steel
- Reading parts are satin chrome finished
- For simultaneously testing of the chamfer angle and the dimensional accuracy
- Dimensions: 48 x 30 x 8.5 mm

Delivery

- Plastic case
- 3 interchangeable blades: 30°, 45°, 60°

Measuring range mm	Reading mm	Order no.	List price EUR
0 - 10	0.10	0597 301	198.00

0600 Tapered hole gauges



0600 101

Model

- Reading 0.1 mm

Measuring range mm	Order no.	List price EUR
Special steel, flat	0600 101	29.10
1 - 15		



0598 Tapered hole gauges



0598 601

Model

- Special steel
- Reading parts matted

	Measuring range mm	Reading mm	Order no.	List price EUR
Special steel				
	0.5 - 7.0	0.10	0598 103	55.00
	2.0 - 7.0	0.10	0598 105	55.00
Plastic				
	0.5 - 11	0.10	0598 601	55.00

0599 Nozzle / small hole gauges

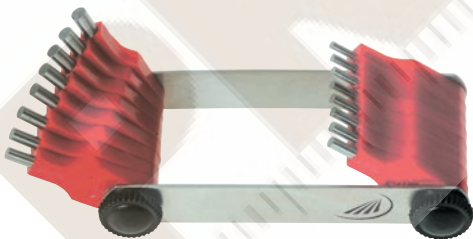


Model

- Special steel
- Cone 1:10
- Nickel plated housing

	Measuring range mm	Reading mm	Order no.	List price EUR
	0 - 5	0.01	0599 102	67.00

0599 Nozzle gauges



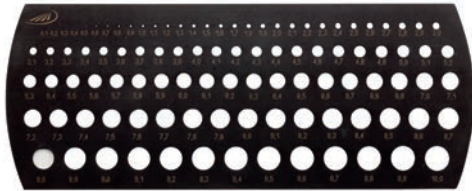
Model

- With steel pins
- Plastic handle
- Manufacturing tolerance ± 0.01 mm

	Measuring range mm	Increment mm	Number of pairs	Order no.	List price EUR
	0.45 - 1.5	0.05	20	0599 151	8.10
	1.5 - 3.0	0.1	16	0599 152	8.10



0601 Drill and steel wire hole gauges (millimeter)



Model

- Special steel, nitrided

Measuring range mm	Increment mm	Order no.	List price EUR
0.7 - 10	0.1	0601 103	103.00

0604 Radius gauges



Model

- Concave and convex
- Locking nut
- Milled finish

Measuring range mm	Number of blades	Order no.	List price EUR
Special steel			
1.0 - 7.0	17	0604 002	7.70
7.5 - 15	16	0604 004	8.50
15.5 - 25	15	0604 006	8.50
Stainless steel			
1.0 - 7.0	17	0604 202	10.20
7.5 - 15	16	0604 204	12.60
15.5 - 25	15	0604 206	12.60



0605 Screw pitch gauges



☒	☒	Measuring range mm	Number of blades	Description	Order no.	List price EUR
		0.25 - 6.0	24	Metric threads according to ISO	0605 101	2.90
		0.40 - 7.0	20	Combined metric threads according to SI System	0605 102	2.60
		4.00 - 62.0	28	Whitworth threads according to DIN	0605 103	2.60
		8.00 - 28.0	6	Whitworth pipe threads	0605 104	2.60
		0.40 - 7.0 / 4.0 - 62.0	48	Combined metric SI and Whitworth threads	0605 105	3.90
		0.25 - 6.0 / 4.0 - 62.0	52	Combined metric and Whitworth threads	0605 106	4.10
		4.00 - 42.0	30	US - threads	0605 108	3.40
		10.0 - 40.0	14	US - threads SAE	0605 109	3.70
		4.00 - 64.0	22	UNC - threads	0605 110	3.40
		12.0 - 80.0	16	UNF - threads	0605 111	3.40
		4.00 - 26.0	20	BSF - threads	0605 112	3.90

0606 / 0607 Feeler gauges



0606 121



0607 201



0607 401

Model

- Conical blades
- Width 10mm
- Blade length 100 mm
- Locking nut

☒	☒	Measuring range mm	Number of blades	Order no.	List price EUR
Spring band steel					
		0.03 - 0.1	8	0606 121	1.90
		0.05 - 0.5	8	0606 123	1.90
		0.05 - 1.0	13	0606 127	1.90
		0.05 - 1.0	20	0606 130	2.90
		0.1 - 0.5	21	0606 132	3.40
		0.05 - 2.0	21	0606 133	6.40
		0.03 - 1.0	32	0606 136	5.80
Stainless spring band steel					
		0.05 - 0.5	8	0607 201	4.40
		0.05 - 1.0	13	0607 202	6.90
		0.05 - 1.0	20	0607 203	10.00
Brass (anti-magnetic)					
		0.05 - 0.5	8	0607 401	7.50
		0.05 - 1.0	13	0607 402	9.20
		0.05 - 1.0	20	0607 403	13.10



0606 Feeler gauges, long version



Model

- Cylindrical blades
- Width 13 mm

Measuring range	Length	Number of blades	Order no.	List price
mm	mm			EUR
0.05 - 0.5	150	8	0606 150	3.90
0.05 - 0.5	200	8	0606 152	4.70
0.05 - 0.5	300	8	0606 154	6.70
0.05 - 1.0	200	13	0606 160	10.10
0.05 - 1.0	300	13	0606 162	11.50
0.05 - 1.0	200	20	0606 170	12.10
0.05 - 1.0	300	20	0606 172	15.30
0.1 - 2.0	200	20	0606 176	20.20
0.1 - 2.0	300	20	0606 178	29.60

0608 Feeler gauges, accuracy grade T3



Model

- Conical blades
- Width 10 mm

Measuring range	Number of blades	Order no.	List price
mm			EUR
0.1 - 0.4	6	0608 140	2.20
0.05 - 1.0	13	0608 143	5.20
0.05 - 1.0	20	0608 144	8.20
0.03 - 1.0	32	0608 149	18.80



0612 Feeler gauge tapes in single boxes - INOX



Model

- Stainless steel
- Width 12.7 mm
- Length 5 m
- Tape from 0.08 mm upwards marked with dimension

Delivery

- Plastic box

✕	☒	Nominal size mm	Order no.	List price EUR
		0.01	0612 501	51.00
		0.02	0612 502	38.90
		0.03	0612 503	17.00
		0.04	0612 504	17.00
		0.05	0612 505	14.70
		0.06	0612 506	12.40
		0.07	0612 507	12.40
		0.08	0612 508	12.40
		0.09	0612 509	12.40
		0.10	0612 510	12.40
		0.12	0612 512	12.40
		0.15	0612 515	12.40
		0.18	0612 518	12.40
		0.20	0612 520	12.40
		0.25	0612 525	12.40

0612 Set of feeler gauge tapes in wallholder - INOX



Model

- Refillable with selected feeler gauges
- Wall holder made of steel, gloss coated
- With size labels

Delivery

- With holder and mounting fittings

✕	☒	Dimensions mm	Measuring range mm	Number of boxes	Order no.	List price EUR
		330 x 100 x 110	0.01 - 0.25	15	0612 180	285.00

0611 Accessories for feeler gauge tapes



0611 195



0611 197



0611 198

✕	☒	Description	Dimensions mm	Order no.	List price EUR
		Holder for feeler gauge tape	125 x 17	0611 195	3.40
		Wallholder for 0.01 - 0.25 mm	330 x 100 x 110	0611 197	44.00
		Wallholder for 0.3 - 1.0 mm	330 x 210 x 220	0611 198	67.00



0611 Feeler gauge tapes in single boxes



Model

- Hardened carbon steel
- Width 12.7 mm
- Length 5 m
- Tape from 0.08 mm upwards marked with dimension

Delivery

- Plastic box

Icon	Nominal size	Order no.	List price
	0.005	0611 300	90.00
	0.01	0611 501	51.00
	0.02	0611 502	38.90
	0.03	0611 503	14.70
	0.04	0611 504	14.70
	0.05	0611 505	12.40
	0.06	0611 506	10.80
	0.07	0611 507	10.80
	0.08	0611 508	10.80
	0.09	0611 509	10.80
	0.10	0611 510	10.80
	0.12	0611 512	10.80
	0.15	0611 515	10.80
	0.18	0611 518	10.80
	0.20	0611 520	10.80
	0.25	0611 525	10.80
	0.30	0611 530	10.80
	0.35	0611 535	12.40
	0.40	0611 540	12.40
	0.45	0611 545	12.40
	0.50	0611 550	12.40
	0.55	0611 552	18.60
	0.60	0611 554	18.60
	0.65	0611 556	18.60
	0.70	0611 558	18.60
	0.75	0611 560	18.60
	0.80	0611 562	18.60
	0.85	0611 564	18.60
	0.90	0611 566	19.80
	0.95	0611 568	19.80
	1.0	0611 570	19.80

0611 Set of feeler gauge tapes in wallholder



Model

- Refillable with selected feeler gauges
- Wall holder made of steel, gloss coated
- With size labels

Delivery

- With holder and mounting fittings

Icon	Dimensions	Measuring range	Number of	Order no.	List price
	330 x 100 x 110	0.01 - 0.25	15	0611 180	261.00
	330 x 210 x 220	0.3 - 1.0	15	0611 190	283.00



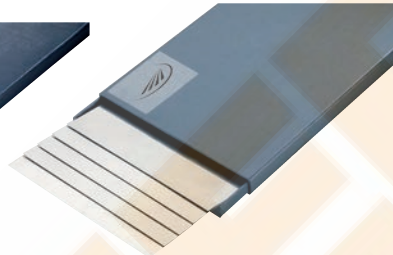
0613 Precision reference sheets



0613 607



0613 709



0613 812

Nominal size mm	Carbon steel, 50 x 300 mm, 10 pieces		Stainless steel, 100 x 500 mm, 5 pieces		Stainless steel, 150 x 500 mm, 5 pieces	
	Order no.	List price EUR	Order no.	List price EUR	Order no.	List price EUR
0.01	0613 607	77.00				
0.02	0613 609	41.40	0613 709	58.00		
0.025					0613 812	64.00
0.03	0613 614	29.10				
0.04	0613 616	29.10				
0.05	0613 618	29.10	0613 718	34.50	0613 818	52.00
0.06	0613 620	19.90				
0.07	0613 622	19.90				
0.075					0613 824	52.00
0.08	0613 626	19.90				
0.09	0613 628	19.90				
0.10	0613 630	20.60	0613 730	32.40	0613 830	48.60
0.12	0613 632	20.60				
0.15	0613 634	20.60	0613 734	32.40	0613 834	48.60
0.18	0613 636	20.60				
0.20	0613 638	20.60	0613 738	40.80	0613 838	61.00
0.25	0613 640	20.60			0613 840	61.00
0.30	0613 642	20.60	0613 742	40.80	0613 842	61.00
0.35	0613 644	22.80				
0.40	0613 646	22.80	0613 746	46.00	0613 846	72.00
0.45	0613 648	22.80				
0.50	0613 650	22.80	0613 750	53.00	0613 850	83.00
0.60	0613 652	36.50	0613 752	64.00		
0.70	0613 654	36.50	0613 754	64.00		
0.80	0613 656	36.50	0613 756	77.00		
0.90	0613 658	36.50	0613 758	77.00		
1.00	0613 660	36.50	0613 760	85.00	0613 860	133.00



0613 Feeler gauge tapes



Nominal size mm	Carbon steel, width 25 mm length 5 m		Carbon steel, width 50 mm length 5 m		Stainless steel, width 100 mm length 5 m		Stainless steel, width 150 mm length 5 m	
	Order no.	List price EUR	Order no.	List price EUR	Order no.	List price EUR	Order no.	List price EUR
0.01	0613 107	77.00	0613 207	111.00				
0.02	0613 109	41.40	0613 209	60.00	0613 309	106.00		
0.025							0613 412	121.00
0.03	0613 114	29.10	0613 214	41.90				
0.04	0613 116	29.10	0613 216	41.90				
0.05	0613 118	29.10	0613 218	41.90	0613 318	64.00	0613 418	97.00
0.06	0613 120	19.90	0613 220	28.60				
0.07	0613 122	19.90	0613 222	28.60				
0.075							0613 424	97.00
0.08	0613 126	19.90	0613 226	28.60				
0.09	0613 128	19.90	0613 228	28.60				
0.10	0613 130	20.60	0613 230	29.70	0613 330	60.00	0613 430	93.00
0.12			0613 232	29.70				
0.15	0613 134	20.60	0613 234	29.70	0613 334	60.00	0613 434	93.00
0.18			0613 236	29.70				
0.20	0613 138	20.60	0613 238	29.70	0613 338	77.00	0613 438	117.00
0.25			0613 240	29.70			0613 440	117.00
0.30	0613 142	20.60	0613 242	29.70	0613 342	77.00	0613 442	117.00
0.35			0613 244	32.40				
0.40	0613 146	22.80	0613 246	32.40	0613 346	87.00	0613 446	129.00
0.45			0613 248	32.40				
0.50	0613 150	22.80	0613 250	32.40	0613 350	100.00	0613 450	150.00
0.60	0613 152	36.50	0613 252	53.00	0613 352	119.00		
0.70	0613 154	36.50	0613 254	53.00	0613 354	119.00		
0.80	0613 156	36.50	0613 256	53.00	0613 356	143.00		
0.90	0613 158	36.50	0613 258	53.00	0613 358	143.00		
1.00	0613 160	36.50	0613 260	53.00	0613 360	163.00		



0584 Comparative surface roughness standards



Model

- 6 manufacturing processes
- 30 comparative standards

Delivery

- Plastic case

		Order no.	List price
		0584 101	EUR 358.00



0623 Individual steel gauge blocks, tolerance class 0



Model

- EN ISO 3650
- Special steel, hardened

Nominal size mm	Order no.	List price EUR
0.5	0623 100	47.60
1.0	0623 102	40.30
1.10	0623 170	40.30
1.20	0623 220	40.30
1.30	0623 270	40.30
1.40	0623 320	40.30
1.50	0623 370	40.30
1.60	0623 375	40.30
1.70	0623 380	40.30
1.80	0623 385	40.30
1.90	0623 390	40.30
2.00	0623 395	40.30
2.50	0623 400	42.80
3.00	0623 405	42.80
3.50	0623 410	42.80
4.00	0623 415	42.80
4.50	0623 420	42.80
5.00	0623 425	42.80
5.50	0623 430	42.80
6.00	0623 435	42.80
6.50	0623 440	42.80
7.00	0623 445	42.80
7.50	0623 450	42.80
8.00	0623 455	42.80
8.50	0623 460	42.80
9.00	0623 465	42.80
9.50	0623 470	42.80
10.00	0623 475	52.00
11.00	0623 500	52.00

Nominal size mm	Order no.	List price EUR
12.00	0623 510	52.00
13.00	0623 520	52.00
14.00	0623 530	52.00
15.00	0623 540	52.00
16.00	0623 550	52.00
17.00	0623 560	52.00
18.00	0623 570	52.00
19.00	0623 580	52.00
20.00	0623 590	52.00
21.00	0623 600	52.00
22.00	0623 610	52.00
23.00	0623 620	52.00
24.00	0623 630	52.00
25.00	0623 640	52.00
30.00	0623 650	61.00
40.00	0623 670	61.00
50.00	0623 680	61.00
60.00	0623 690	61.00
70.00	0623 700	61.00
80.00	0623 710	76.00
90.00	0623 720	76.00
100.00	0623 730	91.00
125.00	0623 740	319.00
150.00	0623 750	319.00
175.00	0623 760	319.00
200.00	0623 770	381.00
300.00	0623 780	544.00
400.00	0623 790	706.00
500.00	0623 800	976.00



0624 Individual steel gauge blocks, tolerance class 1



Model

- EN ISO 3650
- Special steel, hardened

Nominal size mm	Order no.	List price EUR
0.5	0624 100	31.70
1.0	0624 102	27.00
1.001	0624 104	27.00
1.002	0624 106	27.00
1.003	0624 108	27.00
1.004	0624 110	27.00
1.005	0624 112	27.00
1.006	0624 114	27.00
1.007	0624 116	27.00
1.008	0624 118	27.00
1.009	0624 120	27.00
1.01	0624 122	27.00
1.02	0624 130	27.00
1.03	0624 135	27.00
1.04	0624 140	27.00
1.05	0624 145	27.00
1.06	0624 150	27.00
1.07	0624 155	27.00
1.08	0624 160	27.00
1.09	0624 165	27.00
1.10	0624 170	27.00
1.11	0624 175	27.00
1.12	0624 180	27.00
1.13	0624 185	27.00
1.14	0624 190	27.00
1.15	0624 195	27.00
1.16	0624 200	27.00
1.17	0624 205	27.00
1.18	0624 210	27.00
1.19	0624 215	27.00
1.20	0624 220	27.00
1.21	0624 225	27.00
1.22	0624 230	27.00
1.23	0624 235	27.00
1.24	0624 240	27.00
1.25	0624 245	27.00
1.26	0624 250	27.00
1.27	0624 255	27.00
1.28	0624 260	27.00
1.29	0624 265	27.00

Nominal size mm	Order no.	List price EUR
1.30	0624 270	27.00
1.31	0624 275	27.00
1.32	0624 280	27.00
1.33	0624 285	27.00
1.34	0624 290	27.00
1.35	0624 295	27.00
1.36	0624 300	27.00
1.37	0624 305	27.00
1.38	0624 310	27.00
1.39	0624 315	27.00
1.40	0624 320	27.00
1.41	0624 325	27.00
1.42	0624 330	27.00
1.43	0624 335	27.00
1.44	0624 340	27.00
1.45	0624 345	27.00
1.46	0624 350	27.00
1.47	0624 355	27.00
1.48	0624 360	27.00
1.49	0624 365	27.00
1.50	0624 370	27.00
1.60	0624 375	27.00
1.70	0624 380	27.00
1.80	0624 385	27.00
1.90	0624 390	27.00
2.00	0624 395	27.00
2.50	0624 400	28.10
3.00	0624 405	28.10
3.50	0624 410	28.10
4.00	0624 415	28.10
4.50	0624 420	28.10
5.00	0624 425	28.10
5.50	0624 430	28.10
6.00	0624 435	28.10
6.50	0624 440	28.10
7.00	0624 445	28.10
7.50	0624 450	28.10
8.00	0624 455	28.10
8.50	0624 460	28.10
9.00	0624 465	28.10

Nominal size mm	Order no.	List price EUR
9.50	0624 470	28.10
10.00	0624 475	34.20
11.00	0624 500	34.20
12.00	0624 510	34.20
13.00	0624 520	34.20
14.00	0624 530	34.20
15.00	0624 540	34.20
16.00	0624 550	34.20
17.00	0624 560	34.20
18.00	0624 570	34.20
19.00	0624 580	34.20
20.00	0624 590	34.20
21.00	0624 600	34.20
22.00	0624 610	34.20
23.00	0624 620	34.20
24.00	0624 630	34.20
25.00	0624 640	34.20
30.00	0624 650	40.30
35.00	0624 660	40.30
40.00	0624 670	40.30
50.00	0624 680	40.30
60.00	0624 690	40.30
70.00	0624 700	40.30
80.00	0624 710	51.00
90.00	0624 720	51.00
100.00	0624 730	60.00
125.00	0624 740	194.00
150.00	0624 750	194.00
175.00	0624 760	194.00
200.00	0624 770	230.00
300.00	0624 780	331.00
400.00	0624 790	428.00
500.00	0624 800	592.00



0625 Individual steel gauge blocks, tolerance class 2



Model

- EN ISO 3650
- Special steel, hardened

Nominal size mm	Order no.	List price EUR
0.5	0625 100	25.60
1.0	0625 102	22.00
1.001	0625 104	22.00
1.002	0625 106	22.00
1.003	0625 108	22.00
1.004	0625 110	22.00
1.005	0625 112	22.00
1.006	0625 114	22.00
1.007	0625 116	22.00
1.008	0625 118	22.00
1.009	0625 120	22.00
1.01	0625 122	22.00
1.02	0625 130	22.00
1.03	0625 135	22.00
1.04	0625 140	22.00
1.05	0625 145	22.00
1.06	0625 150	22.00
1.07	0625 155	22.00
1.08	0625 160	22.00
1.09	0625 165	22.00
1.10	0625 170	22.00
1.11	0625 175	22.00
1.12	0625 180	22.00
1.13	0625 185	22.00
1.14	0625 190	22.00
1.15	0625 195	22.00
1.16	0625 200	22.00
1.17	0625 205	22.00
1.18	0625 210	22.00
1.19	0625 215	22.00
1.20	0625 220	22.00
1.21	0625 225	22.00
1.22	0625 230	22.00
1.23	0625 235	22.00
1.24	0625 240	22.00
1.25	0625 245	22.00
1.26	0625 250	22.00
1.27	0625 255	22.00
1.28	0625 260	22.00
1.29	0625 265	22.00

Nominal size mm	Order no.	List price EUR
1.30	0625 270	22.00
1.31	0625 275	22.00
1.32	0625 280	22.00
1.33	0625 285	22.00
1.34	0625 290	22.00
1.35	0625 295	22.00
1.36	0625 300	22.00
1.37	0625 305	22.00
1.38	0625 310	22.00
1.39	0625 315	22.00
1.40	0625 320	22.00
1.41	0625 325	22.00
1.42	0625 330	22.00
1.43	0625 335	22.00
1.44	0625 340	22.00
1.45	0625 345	22.00
1.46	0625 350	22.00
1.47	0625 355	22.00
1.48	0625 360	22.00
1.49	0625 365	22.00
1.50	0625 370	22.00
1.60	0625 375	22.00
1.70	0625 380	22.00
1.80	0625 385	22.00
1.90	0625 390	22.00
2.00	0625 395	22.00
2.50	0625 400	22.00
3.00	0625 405	22.00
3.50	0625 410	22.00
4.00	0625 415	22.00
4.50	0625 420	22.00
5.00	0625 425	22.00
5.50	0625 430	22.00
6.00	0625 435	22.00
6.50	0625 440	22.00
7.00	0625 445	22.00
7.50	0625 450	22.00
8.00	0625 455	22.00
8.50	0625 460	22.00
9.00	0625 465	22.00

Nominal size mm	Order no.	List price EUR
9.50	0625 470	22.00
10.00	0625 475	27.00
11.00	0625 500	27.00
12.00	0625 510	27.00
13.00	0625 520	27.00
14.00	0625 530	27.00
15.00	0625 540	27.00
16.00	0625 550	27.00
17.00	0625 560	27.00
18.00	0625 570	27.00
19.00	0625 580	27.00
20.00	0625 590	27.00
21.00	0625 600	27.00
22.00	0625 610	27.00
23.00	0625 620	27.00
24.00	0625 630	27.00
25.00	0625 640	27.00
30.00	0625 650	31.70
35.00	0625 660	31.70
40.00	0625 670	31.70
50.00	0625 680	31.70
60.00	0625 690	31.70
70.00	0625 700	31.70
80.00	0625 710	40.30
90.00	0625 720	40.30
100.00	0625 730	47.60
125.00	0625 740	156.00
150.00	0625 750	156.00
175.00	0625 760	156.00
200.00	0625 770	166.00
300.00	0625 780	262.00
400.00	0625 790	308.00
500.00	0625 800	403.00



0633 Gauge block holders with rapid adjustment



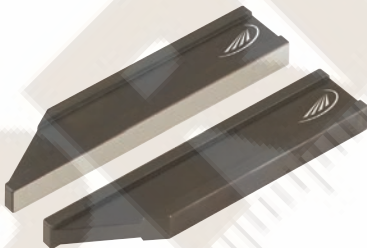
Measuring range mm	Order no.	List price EUR
0 - 50	0633 136	206.00
0 - 100	0633 137	235.00
0 - 200	0633 138	282.00
100 - 200	0633 139	259.00
100 - 300	0633 140	306.00
200 - 400	0633 141	353.00
300 - 500	0633 142	399.00
400 - 600	0633 143	436.00
500 - 800	0633 144	505.00
800 - 1000	0633 145	705.00

0633 Radiused measuring jaws with cylindrical shoulders / pair



Nominal size mm	Measuring depth mm	Order no.	List price EUR
4	8	0633 150	242.00
10	15	0633 151	242.00
16	20	0633 152	259.00
20	40	0633 153	317.00
30	65	0633 154	447.00
40	95	0633 155	582.00

0633 Plane / parallel jaws, pair

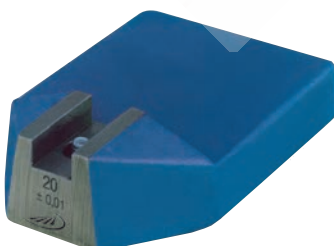


Model

- For external measurement

Dimensions mm	Order no.	List price EUR
For external measurements		
100 x 9 x 20	0633 174	235.00
125 x 9 x 20	0633 175	277.00
For internal and external measurements		
100 x 9 x 20	0633 176	436.00
125 x 9 x 20	0633 177	517.00

0633 Stand for gauge block holder



Model

- Special steel, hardened

Dimensions mm	Order no.	List price EUR
103 x 70 x 27	0633 182	183.00



0633 Gauge block maintenance set



Model

- Set consists of:
- Linen cloth
 - Chamois leather
 - 1 jar of anti corrosion oil
 - Oil stone
 - Fine paint brush
 - Broad paint brush
 - User manual

Delivery

- Wooden case

	Order no.	List price EUR
	0633 001	354.00

0633 Steel gauge block inspection sets for micrometers



Model

- EN ISO 3650
- Special steel, hardened
- Tolerance class 1

Delivery

- Wooden case

	Max. nominal size mm	Order no.	List price EUR
10 pieces, excludes the optical flat	2.5 / 5.1 / 7.7 / 10.3 / 12.9 / 15.0 / 17.6 / 20.2 / 22.8 / 25.0	0633 810	310.00
5 pieces with optical flat	5.1 / 10.3 / 15.0 / 20.2 / 25.0	0633 805	383.00
8 pieces with optical flat	5.1 / 10.3 / 15.0 / 20.2 / 25.0 / 50.0 / 75.0 / 100	0633 808	511.00

0633 Steel gauge block inspection set for calipers



Model

- EN ISO 3650
- Special steel, hardened
- Tolerance class 1
- Supplied with setting rings 4 mm and 25 mm

Delivery

- Wooden case

	For measuring range mm	Max. nominal size mm	Order no.	List price EUR
3 pieces	200	30.0 / 41.3 / 131.4	0633 833	635.00
4 pieces	300	30.0 / 41.3 / 131.4 / 243.5	0633 834	847.00
6 pieces	500	30.0 / 41.3 / 131.4 / 243.5 / 281.2 / 481.1	0633 836	1512.00
5 pieces	1000	131.4 / 243.5 / 281.2 / 481.1 / 900	0633 838	2673.00



0633 Parallel steel gauge block sets




Model

- EN ISO 3650
- Special steel, hardened

Delivery

- Wooden case

	Number of gauge blocks	Max. nominal size mm	Increment mm	Order no.	List price EUR
Tolerance class 0					
	103	1.005 1.01 - 1.49 0.5 - 24.5 25.0 - 100.0	- 0.01 0.5 25	0633 014	1002.00
	87	1.001 - 1.009 1.01 - 1.49 0.5 - 9.5 10.0 - 100.0	0.001 0.01 0.5 10	0633 016	916.00
	47	1.005 1.01 - 1.09 1.11 - 1.19 1.1 - 1.9 1.0 - 9.0 10.0 - 100.0	- 0.01 0.01 0.1 1 10	0633 018	596.00
	32	1.005 1.01 - 1.09 1.1 - 1.9 1.0 - 9.0 10.0 - 30.0 50.0	- 0.01 0.1 1 10 -	0633 020	436.00
Tolerance class 1					
	103	1.005 1.01 - 1.49 0.5 - 24.5 25.0 - 100.0	- 0.01 0.5 25	0633 114	771.00
	87	1.001 - 1.009 1.01 - 1.49 0.5 - 9.5 10.0 - 100.0	0.001 0.01 0.5 10	0633 116	588.00
	47	1.005 1.01 - 1.09 1.11 - 1.19 1.1 - 1.9 1.0 - 9.0 10.0 - 100.0	- 0.01 0.01 0.1 1 10	0633 118	363.00
	32	1.005 1.01 - 1.09 1.1 - 1.9 1.0 - 9.0 10.0 - 30.0 50.0	- 0.01 0.1 1 10 -	0633 120	264.00



0633 Parallel steel gauge block sets



Model

- EN ISO 3650
- Special steel, hardened

Delivery

- Wooden case

		Number of gauge blocks	Max. nominal size mm	Increment mm	Order no.	List price EUR
Tolerance class 2						
		103	1.005 1.01 - 1.49 0.5 - 24.5 25.0 - 100.0	- 0.01 0.5 25	0633 214	487.00
		87	1.001 - 1.009 1.01 - 1.49 0.5 - 9.5 10.0 - 100.0	0.001 0.01 0.5 10	0633 216	385.00
		47	1.005 1.01 - 1.09 1.11 - 1.19 1.1 - 1.9 1.0 - 9.0 10.0 - 100.0	- 0.01 0.01 0.1 1 10	0633 218	263.00
		32	1.005 1.01 - 1.09 1.1 - 1.9 1.0 - 9.0 10.0 - 30.0 50.0	- 0.01 0.1 1 10 -	0633 220	174.00




0636 Pin gauge holder



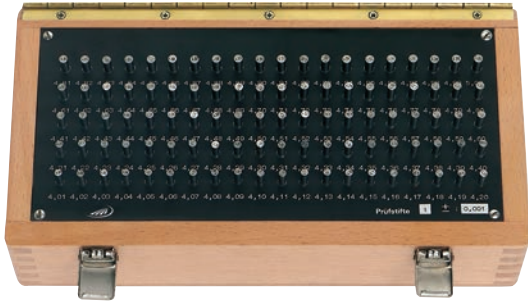
Model

- Die cast
- With locking screw

	Measuring range	Length	Order no.	List price
	mm	mm		EUR
	1 - 2	60	0636 392	14.90
	2 - 4	68	0636 393	17.10
	4 - 6	76	0636 394	32.40
	6 - 8	84	0636 395	41.50
	8 - 10	92	0636 396	47.80



0636 Set of pin gauges



Model

- DIN 2269
- Made out of high quality gauge steel

Delivery

- Wooden case

DIN
2269

⏏	🏠	Length mm	Number of pins	Max. nominal size mm	Increment mm	Order no.	List price EUR
Special steel, hardened and aged - Tolerance class 1							
		40	51	0.5 - 1.0	0.01	0636 301	916.00
		70	21	1.0 - 2.0	0.05	0636 321	278.00
		70	21	2.0 - 3.0	0.05	0636 322	278.00
		70	21	3.0 - 4.0	0.05	0636 323	343.00
		70	21	4.0 - 5.0	0.05	0636 324	343.00
		70	21	5.0 - 6.0	0.05	0636 325	343.00
		70	21	6.0 - 7.0	0.05	0636 326	419.00
		70	21	7.0 - 8.0	0.05	0636 327	419.00
		70	21	8.0 - 9.0	0.05	0636 328	419.00
		70	21	9.0 - 10.0	0.05	0636 329	419.00
		70	101	1.0 - 2.0	0.01	0636 341	1166.00
		70	100	2.01 - 3.0	0.01	0636 342	1166.00
		70	100	3.01 - 4.0	0.01	0636 343	1477.00
		70	100	4.01 - 5.0	0.01	0636 344	1477.00
		70	100	5.01 - 6.0	0.01	0636 345	1477.00
		70	100	6.01 - 7.0	0.01	0636 346	1817.00
		70	100	7.01 - 8.0	0.01	0636 347	1817.00
		70	100	8.01 - 9.0	0.01	0636 348	1817.00
		70	100	9.01 - 10.0	0.01	0636 349	1817.00
		70	91	1.0 - 10.0	0.1	0636 351	1489.00
		70	81	1.0 - 5.0	0.05	0636 352	1353.00
Special steel, hardened and aged - Tolerance class 2							
		70	101	1.0 - 2.0	0.01	0636 372	815.00
		70	100	2.01 - 3.0	0.01	0636 373	815.00
		70	100	3.01 - 4.0	0.01	0636 374	1073.00
		70	100	4.01 - 5.0	0.01	0636 375	1073.00
		70	100	5.01 - 6.0	0.01	0636 376	1073.00
		70	100	6.01 - 7.0	0.01	0636 377	1300.00
		70	100	7.01 - 8.0	0.01	0636 378	1475.00
		70	100	8.01 - 9.0	0.01	0636 379	1475.00
		70	100	9.01 - 10.0	0.01	0636 380	1475.00



0643 Snap gauge, double jaw



Model

- Dimensions 3 to 100 mm
- Gauge steel
- Hardened measuring faces
- Dimensions acc. DIN 2230
- Manufacturing tolerances: according to DIN 7163

Delivery

- Available on request
- **Important: Please mention dimension and fit**

0649 Adjustable snap gauges



Model

- Special cast iron
- 1 fixed measuring face, 2 adjustable square measuring faces

Delivery

- Cardboard box

⌘	📏	Max. nominal size mm	Order no.	List price EUR
		0 - 6	0649 201	82.00
		6 - 13	0649 202	82.00
		13 - 19	0649 203	82.00
		19 - 26	0649 204	84.00
		26 - 32	0649 205	84.00
		32 - 38	0649 206	88.00
		38 - 44	0649 207	88.00
		44 - 51	0649 208	92.00
		51 - 57	0649 209	92.00
		57 - 64	0649 210	96.00

⌘	📏	Max. nominal size mm	Order no.	List price EUR
		64 - 70	0649 211	96.00
		70 - 78	0649 212	105.00
		78 - 87	0649 213	105.00
		87 - 97	0649 215	117.00
		97 - 106	0649 216	133.00
		106 - 116	0649 217	133.00
		116 - 125	0649 219	159.00
		125 - 135	0649 220	207.00
		135 - 144	0649 222	237.00
		144 - 156	0649 223	237.00



0656 Ring gauges



Model

- DIN 2250-1 (C)
- Hardened gauge steel
- For setting internal measuring instruments

DIN 2250-1

⌂	📏	Nominal size	Order no.	List price	⌂	📏	Nominal size	Order no.	List price
		mm		EUR			mm		EUR
		12,5	0656 303	57.00			52	0656 353	108.00
		17,5	0656 304	85.00			55	0656 354	118.00
		225	0656 305	1007.00			58	0656 355	122.00
		275	0656 306	1108.00			60	0656 356	128.00
		3	0656 309	65.00			62	0656 357	131.00
		3,5	0656 310	57.00			65	0656 358	139.00
		4	0656 311	57.00			68	0656 359	149.00
		4,5	0656 312	57.00			70	0656 360	155.00
		5	0656 313	56.00			72	0656 361	161.00
		6	0656 314	54.00			75	0656 362	165.00
		7	0656 315	54.00			78	0656 363	174.00
		8	0656 316	54.00			80	0656 364	180.00
		9	0656 317	54.00			82	0656 365	190.00
		10	0656 318	54.00			85	0656 366	202.00
		11	0656 319	56.00			88	0656 367	216.00
		12	0656 320	57.00			90	0656 368	223.00
		13	0656 321	58.00			92	0656 369	232.00
		14	0656 322	58.00			95	0656 370	247.00
		15	0656 323	59.00			98	0656 371	259.00
		16	0656 324	59.00			100	0656 372	268.00
		17	0656 325	60.00			105	0656 373	280.00
		18	0656 326	60.00			110	0656 374	295.00
		19	0656 327	61.00			115	0656 375	307.00
		20	0656 328	64.00			120	0656 376	321.00
		21	0656 329	64.00			125	0656 377	335.00
		22	0656 330	64.00			130	0656 378	346.00
		23	0656 331	67.00			135	0656 379	361.00
		24	0656 332	68.00			140	0656 380	374.00
		25	0656 333	69.00			145	0656 381	387.00
		26	0656 334	72.00			150	0656 382	401.00
		27	0656 335	72.00			155	0656 383	438.00
		28	0656 336	73.00			160	0656 384	473.00
		30	0656 337	67.00			165	0656 385	508.00
		32	0656 338	76.00			170	0656 386	545.00
		33	0656 339	76.00			175	0656 387	582.00
		34	0656 340	77.00			180	0656 388	617.00
		35	0656 341	77.00			185	0656 389	654.00
		36	0656 342	78.00			190	0656 390	689.00
		37	0656 343	81.00			195	0656 391	726.00
		38	0656 344	82.00			200	0656 392	761.00
		40	0656 345	83.00			210	0656 393	803.00
		42	0656 346	87.00			220	0656 394	838.00
		44	0656 347	92.00			230	0656 395	877.00
		45	0656 348	94.00			240	0656 396	917.00
		46	0656 349	96.00			250	0656 397	956.00
		47	0656 350	100.00			260	0656 398	996.00
		48	0656 351	102.00			270	0656 399	1033.00
		50	0656 352	105.00					



0637 Plug gauges



Model

- Manufacturing tolerances: according to DIN 7150-2 and DIN 7164
- Fit H7
- All cylindrical

✂	📏	Dimensions acc. to Din	Nominal size mm	Order no.	List price EUR
Gauge steel, hardened					
		2245-1	2	0637 103	35.10
		2245-1	2.2	0637 104	35.10
		2245-1	2.5	0637 105	35.10
		2245-1	2.8	0637 106	25.50
		2245-1	3	0637 107	25.50
		2245-1	3.5	0637 108	22.80
		2245-1	4	0637 109	22.80
		2245-1	4.5	0637 110	22.80
		2245-1	5	0637 111	21.60
		2245-1	6	0637 112	21.60
		2245-1	7	0637 113	22.80
		2245-1	8	0637 114	22.80
		2245-1	9	0637 115	24.40
		2245-1	10	0637 116	25.50
		2245-1	11	0637 117	25.50
		2245-1	12	0637 118	27.10
		2245-1	13	0637 119	28.30
		2245-1	14	0637 120	28.30
		2245-1	15	0637 121	29.10
		2245-1	16	0637 122	29.10
		2245-1	17	0637 123	30.50
		2245-1	18	0637 124	31.60
		2245-1	19	0637 125	31.60
		2245-1	20	0637 126	31.60
		2245-1	21	0637 127	33.30
		2245-1	22	0637 128	34.00
		2245-1	23	0637 129	35.10
		2245-1	24	0637 130	35.10
		2245-1	25	0637 131	36.50
		2245-1	26	0637 132	37.90
		2245-1	27	0637 133	37.90
		2245-1	28	0637 134	39.00
		2245-1	30	0637 135	39.00
		2245-1	32	0637 136	43.20

✂	📏	Dimensions acc. to Din	Nominal size mm	Order no.	List price EUR
		2245-1	33	0637 137	44.00
		2245-1	34	0637 138	45.20
		2245-1	35	0637 139	45.20
		2245-1	36	0637 140	46.40
		2245-1	37	0637 141	47.30
		2245-1	38	0637 142	48.60
		2245-1	40	0637 144	51.00
		2245-2	42	0637 146	52.00
		2245-2	43	0637 147	64.00
		2245-2	44	0637 148	56.00
		2245-2	45	0637 149	57.00
		2245-2	46	0637 150	58.00
		2245-2	47	0637 151	60.00
		2245-2	48	0637 152	61.00
		2245-2	50	0637 154	64.00
		2245-2	52	0637 155	67.00
		2245-2	55	0637 156	72.00
		2245-2	58	0637 157	76.00
		2245-2	60	0637 158	78.00
		2245-2	62	0637 159	83.00
		2245-2	65	0637 160	83.00
		2245-2	68	0637 161	91.00
		2245-2	70	0637 162	92.00
		2245-2	72	0637 163	94.00
		2245-2	75	0637 164	100.00
		2245-2	78	0637 165	104.00
		2245-2	80	0637 166	105.00
		2245-2	82	0637 167	108.00
		2245-2	85	0637 168	112.00
		2245-2	88	0637 169	118.00
		2245-2	90	0637 170	119.00
		2245-2	92	0637 171	122.00
		2245-2	95	0637 172	124.00
		2245-2	98	0637 173	129.00
		2245-2	100	0637 174	131.00



0637 Plug gauge set



Model

- DIN 2245
- Hardened gauge steel
- GO and NO GO

Delivery

- Wooden box

DIN 2245

⌘	☒	Number of gauges	ISO fit	Nominal size mm	Order no.	List price EUR
		(3, 4, 5, 6, 8, 10, 12)				
		7	H7	3 - 12	0637 190	167.00





0658 Thread plug gauges



**DIN
2280**

Model

- DIN 2280
- For standard metric ISO threads DIN 13
- Gauge steel, hardened

☒	☒	ISO Fit	Type of thread	Nominal size mm	Thread pitch mm	Order no.	List price EUR
		6H	M	3.0	0.50	0658 009	77.00
		6H	M	4.0	0.70	0658 011	73.00
		6H	M	5.0	0.80	0658 012	72.00
		6H	M	6.0	1.00	0658 013	68.00
		6H	M	8.0	1.25	0658 015	72.00
		6H	M	10.0	1.50	0658 017	76.00
		6H	M	12.0	1.75	0658 019	82.00

0658 Set of thread plug gauges



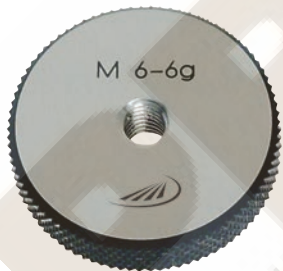
Delivery

- Wooden box

**DIN
2280**

☒	☒	Tolerance class	Type of thread	Max. nominal size mm	Order no.	List price EUR
		(M3, M4, M5, M6, M8, M10, M12)				
		6H	M	M3 - M12	0658 090	285.00

0658 GO thread ring gauges



Model

- DIN 2285-1
- GO thread ring gauge
- For standard metric ISO threads DIN 13
- Hardened gauge steel

**DIN
2285-1**

☒	☒	ISO Fit	Type of thread	Nominal size mm	Thread pitch mm	Order no.	List price EUR
		6g	M	3.0	0.50	0658 509	60.00
		6g	M	4.0	0.70	0658 511	56.00
		6g	M	5.0	0.80	0658 512	56.00
		6g	M	6.0	1.00	0658 513	56.00
		6g	M	8.0	1.25	0658 515	57.00
		6g	M	10.0	1.50	0658 517	67.00
		6g	M	12.0	1.75	0658 519	78.00



0658 NO GO thread ring gauges



Model

- DIN 2299-1
- NO GO thread ring gauge
- For standard metric ISO threads DIN 13
- Hardened gauge steel

DIN
2299-1

☒ ☒	ISO Fit	Type of thread	Nominal size mm	Thread pitch mm	Order no.	List price EUR
	6g	M	3.0	0.50	0658 609	60.00
	6g	M	4.0	0.70	0658 611	56.00
	6g	M	5.0	0.8	0658 612	56.00
	6g	M	6.0	1.0	0658 613	56.00
	6g	M	8.0	1.25	0658 615	57.00
	6g	M	10.0	1.5	0658 617	67.00
	6g	M	12.0	1.75	0658 619	78.00

0658 Thread ring gauges GO



Model

- 7-pieces
- Hardened gauge steel
- For standard metric ISO threads DIN 13
- Fit 6g

Delivery

- Wooden case

DIN
2285-1

☒ ☒	ISO Fit	Type of thread	Nominal size mm	Order no.	List price EUR
	(M3, M4, M5, M6, M8, M10, M12)				
	6g	M	3 - 12	0658 590	285.00

0658 Thread ring gauges NO GO



Model

- 7-pieces
- Hardened gauge steel
- For standard metric ISO threads DIN 13

Delivery

- Wooden case

DIN
2299-1

☒ ☒	ISO Fit	Type of thread	Nominal size mm	Order no.	List price EUR
	(M3, M4, M5, M6, M8, M10, M12)				
	6g	M	3 - 12	0658 690	285.00