

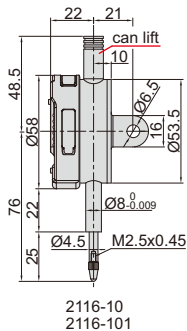
## METRIC DIGITAL INDICATORS

DATA  
OUTPUT

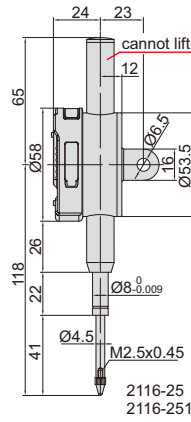
**INSPECTION  
CERTIFICATE**  
TRACEABLE TO NIST



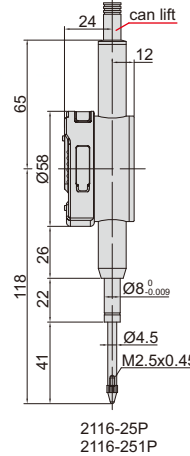
2116-10



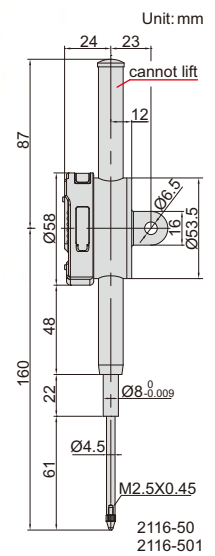
2116-251



2116-25P



2116-501



Unit: mm

- Button function: on/off, zero, data preset, change measuring direction, absolute/incremental measurement
- 0-6 hours automatic power off time can be set
- Switchable high/low frequency measurement mode, high frequency mode is suitable for high speed moving of spindle and has large power consumption, low power consumption in low frequency mode
- Keep preset data in memory after restart
- CR2032 battery, automatic power off
- Data output
- Optional accessory: data output cable (code **7315-50M**, **7302-40M**, **7305-40M**), backs (page 176~177), contact points (page 173~175)

### Resolution 0.001mm

Code	Range	Accuracy	Hysteresis	Maximum measuring force	Remark
<b>2116-101F*</b>	12.7mm	5µm	2µm	1.5N	flat back
<b>2116-251F*</b>	25.4mm	5µm	3µm	2.2N	flat back
<b>2116-501F*</b>	50.8mm	6µm	3µm	2.5N	flat back
<b>2116-101*</b>	12.7mm	5µm	2µm	1.5N	lug back
<b>2116-251*</b>	25.4mm	5µm	3µm	2.2N	lug back
<b>2116-501*</b>	50.8mm	6µm	3µm	2.5N	lug back
<b>2116-251P*</b>	25.4mm	5µm	3µm	2.2N	flat back, with lift cap
<b>2116-501P*</b>	50.8mm	6µm	3µm	2.5N	flat back, with lift cap

### Resolution 0.01mm

Code	Range	Accuracy	Hysteresis	Maximum measuring force	Remark
<b>2116-10F*</b>	12.7mm	20µm	10µm	1.5N	flat back
<b>2116-25F*</b>	25.4mm	20µm	10µm	2.2N	flat back
<b>2116-50F*</b>	50.8mm	30µm	10µm	2.5N	flat back
<b>2116-10*</b>	12.7mm	20µm	10µm	1.5N	lug back
<b>2116-25*</b>	25.4mm	20µm	10µm	2.2N	lug back
<b>2116-50*</b>	50.8mm	30µm	10µm	2.5N	lug back
<b>2116-25P*</b>	25.4mm	20µm	10µm	2.2N	flat back, with lift cap
<b>2116-50P*</b>	50.8mm	30µm	10µm	2.5N	flat back, with lift cap

\*Supplied with manufacturer inspection certificate traceable to NIST USA

### 2116-251P/501P/25P/50P



spindle lift knob is included

