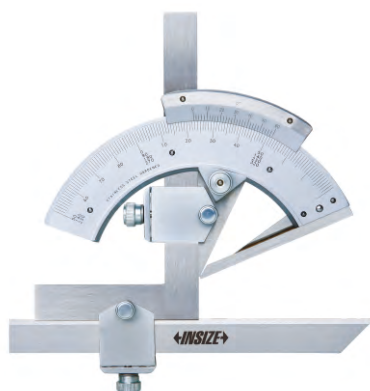
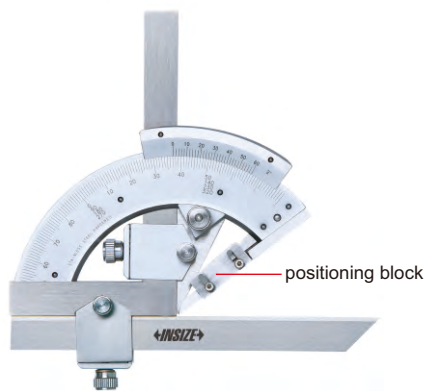


PROTRACTORS

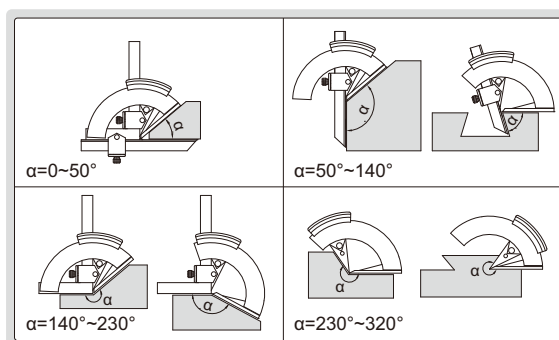
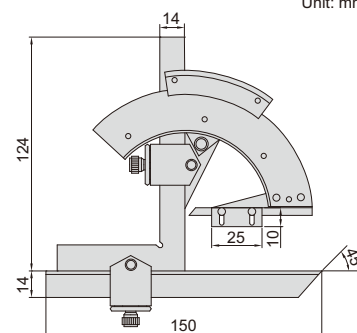


2374-320



2374-320D

Unit: mm



- Made of stainless steel
- Satin chrome plated scale

Code	Range	Graduation	Accuracy	Remark
2374-320	0-320°	2'	±2'	without positioning block
2374-320D	0-320°	2'	±2'	with positioning block

application of 2374-320D

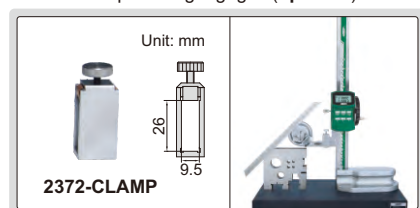


The positioning block can be moved down for positioning, and moved up when not in use

10

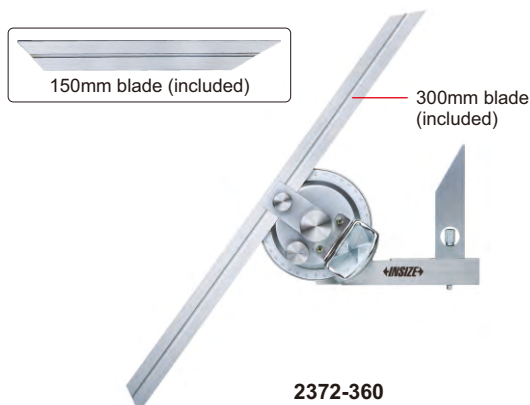
UNIVERSAL PROTRACTOR

clamp for height gages (optional)



- Parallax-free reading
- Made of stainless steel
- Optional accessory: clamp (code 2372-CLAMP), suitable for height gages 1156, 1351 and 1250

Code	Range	Graduation	Accuracy
2372-360	0-360°	5'	±5'



2372-360

Unit: mm

