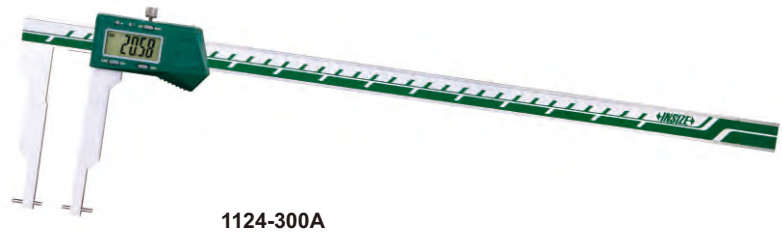


DIGITAL CALIPERS WITH INTERCHANGEABLE POINTS

DATA OUTPUT

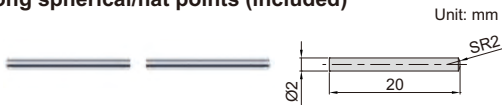
2



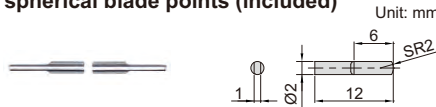
short spherical/flat points (included) Unit: mm



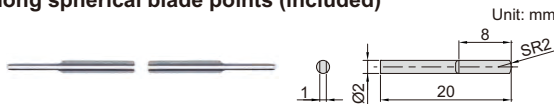
long spherical/flat points (included) Unit: mm



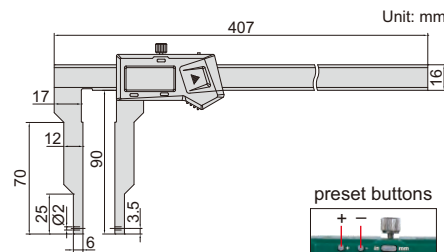
short spherical blade points (included) Unit: mm



long spherical blade points (included) Unit: mm



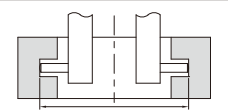
- Supplied with 4 pairs of points and zero setting block for external measurement
- Resolution: 0.01mm/0.0005"
- Buttons: on/off, set, mm/inch, preset (+, -)
- Automatic power off, move the digital unit to turn on power
- Battery CR2032
- Made of stainless steel
- Optional accessory: points (code 1526-T101, 7392, 7391, 7381, 7321), depth stop (code 6143)



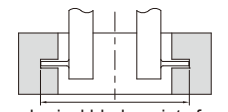
zero setting block for external measurement (included)



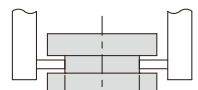
measure internal and external grooves



spherical points for groove (inside hole) measurement



spherical blade points for narrow groove (inside hole) measurement



flat points for external groove measurement

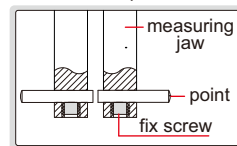
preset buttons



depth stop 6143 (optional)



install points



With data interface

Code	Data output cable (optional)
1124-300A	code 7315-21, 7302-21

Built-in wireless

Code	Receiver (optional)
1124-300AWL	code 7315-2/3/6/7/8

Point	Range	Accuracy	Application
short spherical/flat points	24-324mm/1-12.7" (internal) 0-288mm/0-11.3" (external)	±0.04mm	spherical points for grooves inside hole (small hole) flat points for external grooves
long spherical/flat points	40-340mm/1.5-13.3" (internal) 0-272mm/0-10.7" (external)	±0.04mm	spherical points for grooves inside hole (large hole) flat points for external grooves
short spherical blade points	24-324mm/1-12.7" (internal) 0-288mm/0-11.3" (external)	±0.04mm	for narrow grooves inside hole (small hole)
long spherical blade points	40-340mm/1.5-13.3" (internal) 0-272mm/0-10.7" (external)	±0.04mm	for narrow grooves inside hole (large hole)

Multifunctional points 7392* (optional, page 30)



Ball points 7391* (optional, page 30)



Screw thread points 7381*, 7321* (optional, page 30)



* It is necessary to use point sleeve (code 1526-T101) for these points