

11

FLOOR SCALES, PALLET SCALES, DRIVE-THROUGH SCALES

From incoming goods to production and shipping – our modern, powerful floor scales can be used everywhere and intuitively. The many clever functions will assist you in carrying out processes effectively and economically, all while meeting high requirements and saving resources.

In our floor scales product category, we offer our customers a carefully coordinated product range in the weighing range from 300 to 6,000 kg. Choose between affordable entry level models, practical built-in solutions or Premium products made from stainless steel and verified. Our floor scales stand out due to their durable industrial quality as well as reliable protection against dust and water splashes.

Industrial scales for heavy loads

When weighing large containers and heavy goods, scales must overcome different challenges. As well as correspondingly large weighing ranges, a high level of stability and sturdiness is necessary, in order to withstand the maximum loads acting on the weighing plate. Our floor scales are perfectly suited for this task, for example through generously sized struts and material thicknesses, mobile stored adjustable feet for the protection of the load cells, IP67 protection against dust and water splashes or a convenient disconnect device between the display device and platform. The latter means that you can install a verified scale in a packing and dispatch bench or a pit frame for barrier-free access at a later date. Large LCD displays make it easier to read the display even if the angle of view is not ideal. We also have pallet scales, weighing beams and drive-through scales available for versatile use.

Our recommendation: High-resolution KERN BIC floor scale with $2 \times 3,000$ [d] at the best price-to-performance ratio.

Easy integration through digital interfaces

Thanks to interfaces such as RS-232, USB, Bluetooth, WiFi, Ethernet the scale can easily be connected to existing networks. Data exchange between scale and PC or printer is easy and reliable. The standardised KCP interface (Kern Communication Protocol) takes over the searching and remote control of the scale using external control devices or computers. KCP enables you to recall and control the relevant parameters and device functions and is also compatible with the MT-SICS protocol in most cases.

Our recommendation: High-resolution multi-range pallet scale KERN UID with EC type approval [M] and various data interfaces.

The KERN calibration and verification service

In order to fulfil quality requirements in accordance with DIN EN ISO 9000ff and other standards, we can offer our customers DAkkS calibration. Calibration ensures correct, usable weighing results and makes the floor scale into a reliable measuring and testing instrument. When calibrating, deviations in the display will be identified and documented. The main points to remember are: DAkkS calibration is always sensible, when checking equipment is to be used in a QM process. While calibration is not legally regulated, verification is mandatory in different applications for example:

- In commercial trade, if the price of goods are determined by weighing results.
- In the production of pre-packaged goods
- In the pharmaceutical industry
- For official purposes.

Our recommendation: BID floor scale with EC type approval [M] and the best price-to-performance ratio – now also as a high-resolution multi-range balance.

Individual solutions for maximum efficiency

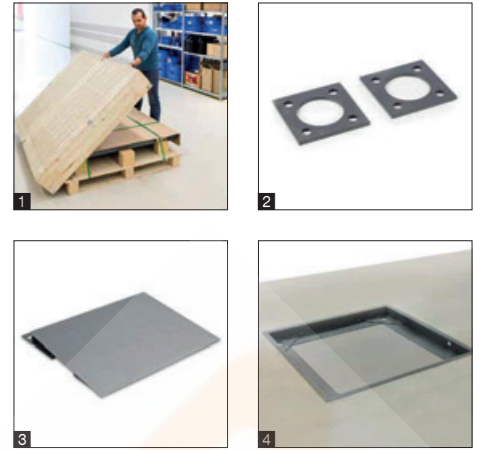
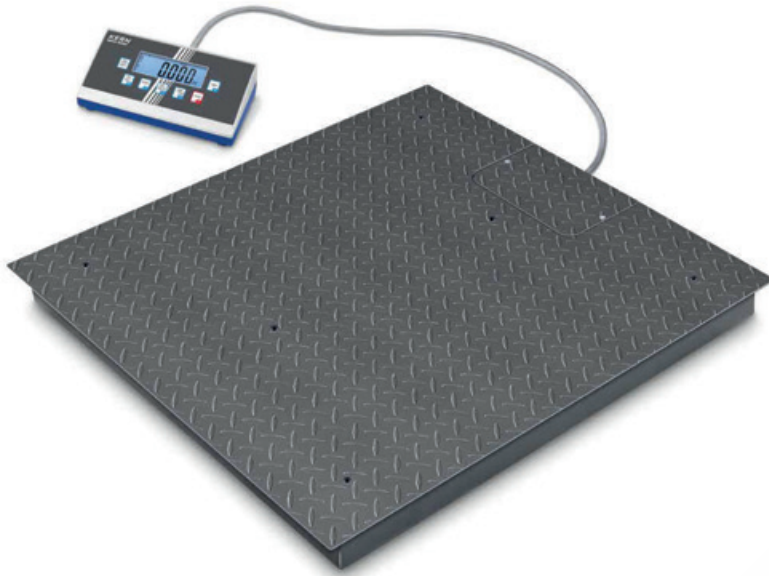
The weighing ranges of bench counting scales are often not sufficient to count large quantities, units or items on pallets. This is where high-performance counting systems come into their own, as these combine a high-precision reference scale with a high-capacity bulk scale, such as for example a floor scale, pallet scale or drive-through scale.

If you have special requirements, you can also configure your ideal scale easily and quickly so that it meets your needs. We will put your weighing combination together for you, using the components you have selected and including verification. Please contact your personal customer advisor for further information!

Quick-Finder Floor Scales/Pallet Scales/Drive-through Scales

| Readability | Weighing capacity [Max] | Weighing plate WxD | Model | Page | M | RS 232 | USB | BT | WIFI | LAN | KCP PROTOCOL | PCS | TOL | ACCU |
|-------------|-------------------------|--------------------|---------------|------|--|--------|-----|----|------|-----|--------------|-----|-----|------|
| [d] g | kg | mm | KERN | | For an explanation on the pictos, see the front flap | | | | | | | | | |
| 50 100 | 300 600 | 1000×1000×108 | BID 600K-1DS | 118 | ● | ○ | ○ | ○ | ○ | ○ | ● | ● | ● | ○ |
| 50 100 | 300 600 | 1200×1500×108 | BID 600K-1D | 118 | ● | ○ | ○ | ○ | ○ | ○ | ● | ● | ● | ○ |
| 100 200 | 300 600 | 1000×1000×108 | BID 600K-1DSM | 118 | ○ | ● | ○ | ○ | ○ | ○ | ● | ● | ● | ○ |
| 100 200 | 300 600 | 1195×840×110 | UID 600K-1DM | 125 | ○ | ● | ○ | ○ | ○ | ○ | ● | ● | ● | ○ |
| 100 200 | 300 600 | 1200×1500×108 | BIC 600K-1 | 117 | | | | | | | | | | |
| 100 200 | 300 600 | 1200×1500×108 | BID 600K-1DM | 118 | ○ | ● | ○ | ○ | ○ | ○ | ● | ● | ● | ○ |
| 100 200 | 300 600 | 1000×1000×108 | BIC 600K-1S | 117 | | | | | | | | | | |
| 100 | 300 | 1000×1000×40 | NIB 300K-1 | 128 | | | | | | | | | | |
| 100 200 | 600 1500 | 1000×1000×108 | BID 1T-4DS | 118 | ● | ○ | ○ | ○ | ○ | ○ | ● | ● | ● | ○ |
| 100 200 | 600 1500 | 1200×1500×108 | BID 1T-4D | 118 | ● | ○ | ○ | ○ | ○ | ○ | ● | ● | ● | ○ |
| 200 500 | 600 1500 | 1000×1000×108 | BID 1T-4DSM | 118 | ○ | ● | ○ | ○ | ○ | ○ | ● | ● | ● | ○ |
| 200 500 | 600 1500 | 1190×840×110 | UID 1500K-1DM | 125 | ○ | ● | ○ | ○ | ○ | ○ | ● | ● | ● | ○ |
| 200 500 | 600 1500 | 1200×1500×108 | BIC 1T-4 | 117 | | | | | | | | | | |
| 200 500 | 600 1500 | 1200×1500×108 | BID 1T-4DM | 118 | ○ | ● | ○ | ○ | ○ | ○ | ● | ● | ● | ○ |
| 200 500 | 600 1500 | 1000×1000×108 | BIC 1T-4S | 117 | | | | | | | | | | |
| 200 | 600 | 870×120×84 | UFA 600K-1S | 123 | ● | ○ | ○ | ○ | ○ | ○ | ● | ● | ● | ○ |
| 200 | 600 | 1000×1000×108 | BID 600K-1SM | 118 | ○ | ● | ○ | ○ | ○ | ○ | ● | ● | ● | ○ |
| 200 | 600 | 1195×840×110 | UID 600K-1M | 125 | ○ | ● | ○ | ○ | ○ | ○ | ● | ● | ● | ○ |
| 200 | 600 | 1361×840×80 | UFC 600K-1M | 126 | ○ | ○ | ○ | ○ | ○ | ○ | ● | ● | ● | ○ |
| 200 | 600 | 1200×1500×108 | BID 600K-1M | 118 | ○ | ● | ○ | ○ | ○ | ○ | ● | ● | ● | ○ |
| 200 | 600 | 1600×1220×95 | NXC 600K-1M | 130 | ○ | ○ | ○ | ○ | ○ | ○ | ● | ● | ● | ○ |
| 200 | 600 | 1361×840×80 | UXC 600K-1M | 127 | ○ | ○ | ○ | ○ | ○ | ○ | ● | ● | ● | ○ |
| 200 | 600 | 1000×1000×85 | BFC 600K-1SM | 120 | ○ | ○ | ○ | ○ | ○ | ○ | ● | ● | ● | ○ |
| 200 | 600 | 1000×1000×85 | BXC 600K-1SM | 122 | ○ | ○ | ○ | ○ | ○ | ○ | ● | ● | ● | ○ |
| 200 | 600 | 1500×1250×85 | BFC 600K-1M | 120 | ○ | ○ | ○ | ○ | ○ | ○ | ● | ● | ● | ○ |
| 200 | 600 | 1600×1220×95 | NFC 600K-1M | 129 | ○ | ○ | ○ | ○ | ○ | ○ | ● | ● | ● | ○ |
| 200 | 600 | 1800×1420×95 | NFC 600K-1LM | 129 | ○ | ○ | ○ | ○ | ○ | ○ | ● | ● | ● | ○ |
| 200 | 600 | 1000×1000×40 | NIB 600K-2 | 128 | | | | | | | | | | |
| 200 | 600 | 1195×840×110 | UIB 600K-1 | 124 | | | | | | | | | | |
| 200 500 | 1500 3000 | 1200×1500×108 | BID 3T-3D | 118 | ● | ○ | ○ | ○ | ○ | ○ | ● | ● | ● | ○ |
| 200 500 | 1500 3000 | 1500×1500×108 | BID 3T-3DL | 118 | ● | ○ | ○ | ○ | ○ | ○ | ● | ● | ● | ○ |
| 500 1000 | 1500 3000 | 1190×840×110 | UID 3000K-ODM | 125 | ○ | ● | ○ | ○ | ○ | ○ | ● | ● | ● | ○ |
| 500 1000 | 1500 3000 | 1200×1500×108 | BIC 3T-3 | 117 | | | | | | | | | | |
| 500 1000 | 1500 3000 | 1500×1500×108 | BIC 3T-3L | 117 | | | | | | | | | | |
| 500 1000 | 1500 3000 | 1200×1500×108 | BID 3T-3DM | 118 | ○ | ● | ○ | ○ | ○ | ○ | ● | ● | ● | ○ |
| 500 1000 | 1500 3000 | 1500×1500×108 | BID 3T-3DLM | 118 | ○ | ● | ○ | ○ | ○ | ○ | ● | ● | ● | ○ |
| 500 | 1500 | 1000×1000×108 | BID 1T-4SM | 118 | ○ | ● | ○ | ○ | ○ | ○ | ● | ● | ● | ○ |
| 500 | 1500 | 1190×840×110 | UID 1500K-1M | 125 | ○ | ● | ○ | ○ | ○ | ○ | ● | ● | ● | ○ |
| 500 | 1500 | 1270×170×85 | UFA 1.5T0.5 | 123 | ● | ○ | ○ | ○ | ○ | ○ | ● | ● | ● | ○ |
| 500 | 1500 | 1361×840×80 | UFC 1.5T-4M | 126 | ○ | ○ | ○ | ○ | ○ | ○ | ● | ● | ● | ○ |
| 500 | 1500 | 1200×1000×108 | BID 1T-4EM | 118 | ○ | ● | ○ | ○ | ○ | ○ | ● | ● | ● | ○ |
| 500 | 1500 | 1200×1500×108 | BID 1T-4M | 118 | ○ | ● | ○ | ○ | ○ | ○ | ● | ● | ● | ○ |
| 500 | 1500 | 1600×1220×95 | NXC 1.5T-4M | 130 | ○ | ○ | ○ | ○ | ○ | ○ | ● | ● | ● | ○ |
| 500 | 1500 | 1361×840×80 | UXC 1.5T-4M | 127 | ○ | ○ | ○ | ○ | ○ | ○ | ● | ● | ● | ○ |
| 500 | 1500 | 1500×1500×108 | BID 1T-4LM | 118 | ○ | ● | ○ | ○ | ○ | ○ | ● | ● | ● | ○ |
| 500 | 1500 | 1000×1000×85 | BFC 1.5T-4SM | 120 | ○ | ○ | ○ | ○ | ○ | ○ | ● | ● | ● | ○ |
| 500 | 1500 | 1000×1000×85 | BXC 1.5T-4SM | 122 | ○ | ○ | ○ | ○ | ○ | ○ | ● | ● | ● | ○ |
| 500 | 1500 | 1500×1250×85 | BFC 1.5T-4M | 120 | ○ | ○ | ○ | ○ | ○ | ○ | ● | ● | ● | ○ |
| 500 | 1500 | 1500×1250×85 | BXC 1.5T-4M | 122 | ○ | ○ | ○ | ○ | ○ | ○ | ● | ● | ● | ○ |
| 500 | 1500 | 1600×1220×95 | NFC 1.5T-4M | 129 | ○ | ○ | ○ | ○ | ○ | ○ | ● | ● | ● | ○ |
| 500 | 1500 | 1800×1420×95 | NFC 1.5T-4LM | 129 | ○ | ○ | ○ | ○ | ○ | ○ | ● | ● | ● | ○ |
| 500 | 1500 | 1195×840×110 | UIB 1.5T-4 | 124 | | | | | | | | | | |
| 1000 | 3000 | 1270×170×85 | UFA 3T1 | 123 | ● | ○ | ○ | ○ | ○ | ○ | ● | ● | ● | ○ |
| 1000 | 3000 | 1195×840×110 | UID 3000K-OM | 125 | ○ | ● | ○ | ○ | ○ | ○ | ● | ● | ● | ○ |
| 1000 | 3000 | 2000×120×90 | UFA 3T-3L | 123 | ● | ○ | ○ | ○ | ○ | ○ | ● | ● | ● | ○ |
| 1000 | 3000 | 1200×1500×108 | BID 3T-3M | 118 | ○ | ● | ○ | ○ | ○ | ○ | ● | ● | ● | ○ |
| 1000 | 3000 | 1500×1500×108 | BID 3T-3LM | 118 | ○ | ● | ○ | ○ | ○ | ○ | ● | ● | ● | ○ |
| 1000 | 3000 | 1500×1250×85 | BFC 3T-3M | 120 | ○ | ○ | ○ | ○ | ○ | ○ | ● | ● | ● | ○ |
| 1000 | 3000 | 1500×1250×85 | BXC 3T-3M | 122 | ○ | ○ | ○ | ○ | ○ | ○ | ● | ● | ● | ○ |
| 1000 | 3000 | 1500×1500×85 | BFC 3T-3LM | 120 | ○ | ○ | ○ | ○ | ○ | ○ | ● | ● | ● | ○ |
| 1000 | 3000 | 1195×840×110 | UIB 3T-3 | 124 | | | | | | | | | | |
| 2000 | 6000 | 1200×160×115 | UFA 6T-3 | 123 | ● | ○ | ○ | ○ | ○ | ○ | ● | ● | ● | ○ |
| 2000 | 6000 | 1500×1500×123 | BFC 6T-3M | 120 | ○ | ○ | ○ | ○ | ○ | ○ | ● | ● | ● | ○ |
| 2000 | 6000 | 2000×160×115 | UFA 6T-3L | 123 | ● | ○ | ○ | ○ | ○ | ○ | ● | ● | ● | ○ |

● Standard ○ Option



High-resolution floor scale with 2×3000 [d] and the best price-to-performance ratio

| Features | Technical data | Accessories |
|--|---|---|
| <ul style="list-style-type: none"> • Weighing bridge out of anti-slip corrugated steel, 4 load cells, alloy steel, silicone-coated, IP67 • Welded platform with screw holes to lift the scale for easy cleaning • Easy levelling of the weighing bridge as well as access to the junction box from above • Simple and convenient 4-key operation • Wall mount for display device, standard • 1 Our floor scales are delivered in a robust wooden box. This protects the high-quality weighing technology from environmental influences and stresses during transportation | <ul style="list-style-type: none"> • Large LCD display, digit height 25 mm • Weighing platform dimensions, steel, powder-coated <ul style="list-style-type: none"> A W×D×H 1000×1000×108 mm B W×D×H 1200×1500×108 mm C W×D×H 1500×1500×108 mm • Dimensions of display device W×D×H 235×114×51 mm • Optional battery operation, 4×1.5 V AA not included in scope of delivery, operating time up to 60 h • Cable length of display device approx. 5 m • Permissible ambient temperature -10 °C/40 °C | <ul style="list-style-type: none"> • Protective working cover over the display device, scope of delivery 5 items, KERN EOB-A04BS05 • 2 Pair of base plates to fix the weighing bridge to the floor, KERN BIC-A07 • 3 Ascending ramp, steel, powder-coated, for models with weighing plate size <ul style="list-style-type: none"> A 1000×1000×108 mm, KERN BIC-A01 B 1200×1000×108 mm, KERN BIC-A02 C 1500×1000×108 mm, KERN BIC-A03 • 4 Stable pit frame, steel, powder-coated, for models with weighing plate size <ul style="list-style-type: none"> A 1088×1088×110 mm, KERN BIC-A04 B 1288×1588×110 mm, KERN BIC-A05 C 1588×1588×110 mm, KERN BIC-A06 |

11

STANDARD

CAL EXT UNIT MOVE PT IP 67 LC IP 67 BATT MULTI DMS 2 DAYS

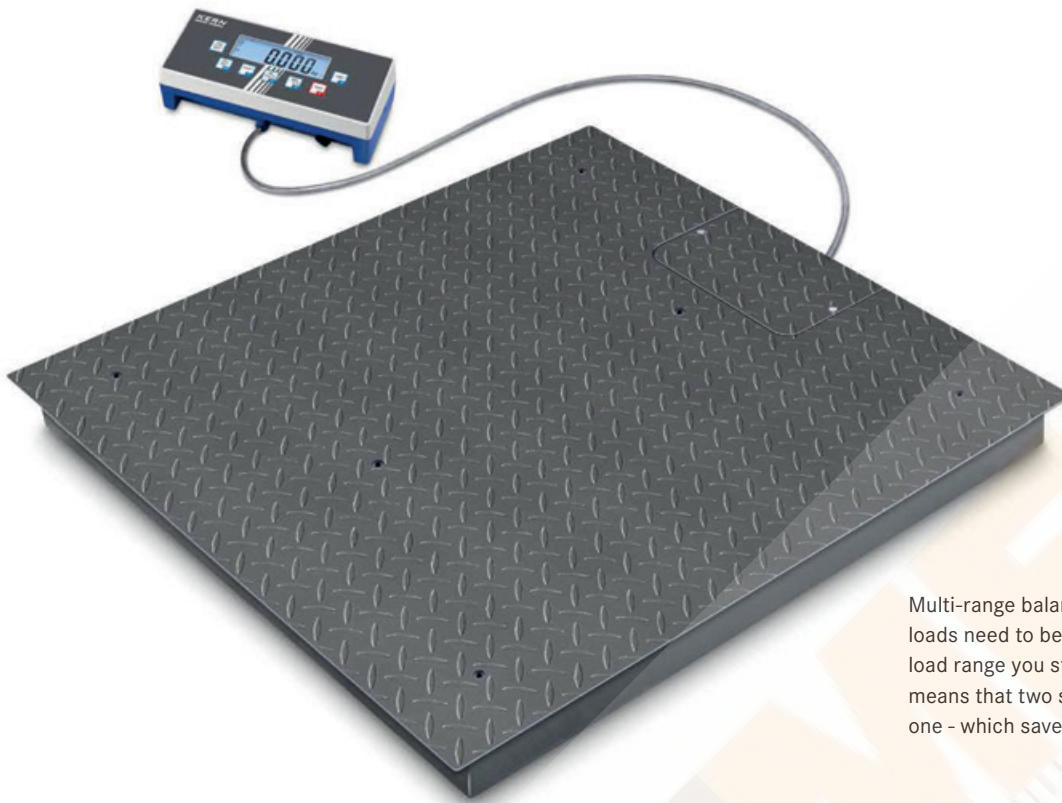
OPTION

DAkks +3 DAYS

! Shipment via freight forwarder. Please ask for dimensions, gross weight, shipping costs

| Model | Weighing capacity [Max] kg | Readability [d] kg | Weighing plate | Net weight approx. kg | Options |
|--------------------|----------------------------------|--------------------------|----------------|--------------------------|--|
| | | | | | DAkks Calibr. Certificate DAkks KERN |
| BIC 600K-1S | 300 600 | 0,1 0,2 | A | 70 | 963-130 |
| BIC 600K-1 | 300 600 | 0,1 0,2 | B | 150 | 963-130 |
| BIC 1T-4S | 600 1500 | 0,2 0,5 | A | 70 | 963-130 |
| BIC 1T-4 | 600 1500 | 0,2 0,5 | B | 150 | 963-130 |
| BIC 3T-3 | 1500 3000 | 0,5 1 | B | 150 | 963-132 |
| BIC 3T-3L | 1500 3000 | 0,5 1 | C | 155 | 963-132 |

Multi-range balance, with increasing load it switches automatically to the next largest weighing range [Max] and readout [d] and when the load is fully removed, the balance switches back to the lower range



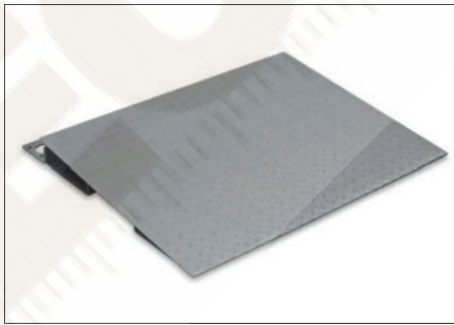
Multi-range balances, ideal, high maximum loads need to be weighed, but in the lower load range you still need high resolution. This means that two scales can be replaced with one - which saves space and money!

Multi-range floor scale with the best price-to-performance ratio, verification optional

11



Our floor scales are delivered in a robust wooden box. This protects the high-quality weighing technology from environmental influences and stresses during transportation



1 Access ramp incl. pair of base plates to facilitate access of e.g. wire cage trolleys, shelf trolleys, container trolleys, storage trolleys, sack trucks, transpallets, mobile containers, containers refuse etc.



2 Verification plug, for verified balances this enables you to separate the display device and platform without affecting the verification, e.g. for installing the scale in a packing and dispatch table, pit frame etc. at a later date. Please order this at the same time as you purchase your scale

3 In addition to the RS-232 data interface, which is integrated as standard, only one other data interface can be installed and operated

! Shipment via freight forwarder. Please ask for dimensions, gross weight, shipping costs

Features

- KERN BID 1T-4EM: Compact special size, especially for weighing europallets
- Display device: Plastic, protected against dust and water splashes IP65. for details see KERN KIB-TM
- Weighing bridge out of anti-slip corrugated steel, 4 load cells, alloy steel, silicone-coated, IP67
- Easy levelling of the weighing bridge as well as access to the junction box from above
- Totalising of weights and piece counts
- Thanks to interfaces such as RS-232 or USB, WiFi, Bluetooth, Ethernet (optional), the scale can easily be connected to existing networks. Data exchange between the scale, PC or printer
- KERN Communication Protocol (KCP): The KCP permits searching and remote control of the balance using external control devices or computers

Technical data

- Large LCD display, digit height 25 mm
- Weighing platform dimensions W×D×H, steel, powder-coated
 - A 1000×1000×108 mm, ■ B 1200×1000×108 mm
 - C 1200×1500×108 mm, ■ D 1500×1500×108 mm
- Dimensions of display device W×D×H 268×115×80 mm
- Cable length of display device approx. 5 m
- Permissible ambient temperature -10 °C/40 °C

Accessories

- Protective working cover, scope of delivery 5 items, KERN EOC-A01S05
- Pair of base plates to fix the weighing bridge to the floor, KERN BIC-A07
- ■ Ascending ramp, steel, powder-coated, for models with weighing plate size
 - A, ■ B 1000×1000×108 mm, KERN BIC-A01
 - C 1200×1000×108 mm, KERN BIC-A02
 - D 1500×1000×108 mm, KERN BIC-A03
- Stable pit frame, Steel, powder-coated, to install the weighing bridge so you can drive straight on, for models with weighing plate size
 - A 1088×1088×110 mm, KERN BIC-A04
 - B 1288×1088×110 mm, KERN BIC-A08
 - C 1288×1588×110 mm, KERN BIC-A05
 - D 1588×1588×110 mm, KERN BIC-A06

- Benchtop stand incl. wall mount for display device, KERN EOC-A04
- Internal rechargeable battery pack, operating time up to 43 h without backlight, charging time approx. 3 h, KERN KFB-A01
- USB data interface, for transferring weighing to the PC, printer etc., must be ordered at purchase, KERN KIB-A03
- Bluetooth data interface for wireless data transfer to PC or tablets, must be ordered at purchase, KERN KIB-A04
- WiFi interface for wireless connection of the balance to networks and WiFi capable devices, such as tablets, laptops or smartphones, continuous data transfer, must be ordered at purchase, KERN KIB-A10
- Ethernet data interface, to connect an IP-based Ethernet network, continuous data transfer, must be ordered at purchase, KERN KIB-A02
- Signal lamp, including interface, for visual support of weighing with tolerance range, must be ordered at purchase, KERN KIB-A06
- Alibi memory, for paperless archiving of the weighing results with ID no., gross/net/tare value, date and time, must be ordered at purchase, KERN KIB-A13
- ■ Verification plug, for verified balances this enables you to separate the display device and platform without affecting the verification, e.g. for installing the scale in a packing and dispatch table, pit frame etc. at a later date. Please order this at the same time as you purchase your scale, KERN KIB-A12

STANDARD



OPTION



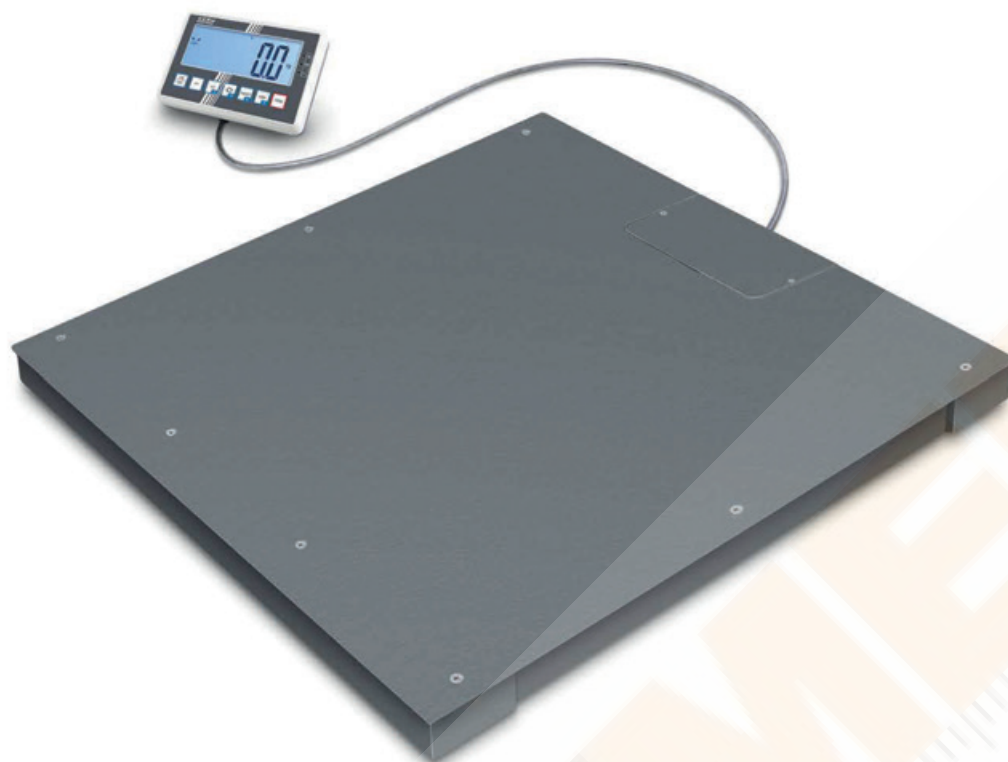
FACTORY



| Model | Weighing capacity [Max] kg | Readability = Verification value [d] = [e] kg | Minimal load [Min] kg | Weighing plate | Net weight approx. kg | Options | | |
|---|----------------------------|---|-----------------------|----------------|-----------------------|--------------|---------------|-------------|
| | | | | | | Verification | DAKKS Calibr. | Certificate |
| KERN | | | | | | KERN | KERN | |
| High-resolution versions with fine display | | | | | | | | |
| BID 600K-1DS | 300 600 | 0,05 0,1 | - | ■ A | 75 | - | - | 963-130 |
| BID 600K-1D | 300 600 | 0,05 0,1 | - | ■ C | 150 | - | - | 963-130 |
| BID 1T-4DS | 600 1500 | 0,1 0,2 | - | ■ A | 75 | - | - | 963-130 |
| BID 1T-4D | 600 1500 | 0,1 0,2 | - | ■ C | 150 | - | - | 963-130 |
| BID 3T-3D | 1500 3000 | 0,2 0,5 | - | ■ C | 150 | - | - | 963-132 |
| BID 3T-3DL | 1500 3000 | 0,2 0,5 | - | ■ D | 155 | - | - | 963-132 |
| Multi-range balance, with increasing load it switches automatically to the next largest weighing range [Max] and readout [d] and when the load is fully removed, the balance switches back to the lower range | | | | | | | | |
| BID 600K-1DSM | 300 600 | 0,1 0,2 | 2 4 | ■ A | 75 | 965-230 | 158,- | 963-130 |
| BID 600K-1DM | 300 600 | 0,1 0,2 | 2 4 | ■ C | 150 | 965-230 | 158,- | 963-130 |
| BID 1T-4DSM | 600 1500 | 0,2 0,5 | 4 10 | ■ A | 75 | 965-230 | 158,- | 963-130 |
| BID 1T-4DM | 600 1500 | 0,2 0,5 | 4 10 | ■ C | 150 | 965-230 | 158,- | 963-130 |
| BID 3T-3DM | 1500 3000 | 0,5 1 | 10 20 | ■ C | 150 | 965-232 | 235,- | 963-132 |
| BID 3T-3DLM | 1500 3000 | 0,5 1 | 10 20 | ■ D | 155 | 965-232 | 235,- | 963-132 |
| BID 600K-1SM | 600 | 0,2 | 4 | ■ A | 75 | 965-230 | 158,- | 963-130 |
| BID 600K-1M | 600 | 0,2 | 4 | ■ C | 150 | 965-230 | 158,- | 963-130 |
| BID 1T-4SM | 1500 | 0,5 | 10 | ■ A | 70 | 965-230 | 158,- | 963-130 |
| BID 1T-4EM | 1500 | 0,5 | 10 | ■ B | 85 | 965-230 | 158,- | 963-130 |
| BID 1T-4M | 1500 | 0,5 | 10 | ■ C | 150 | 965-230 | 158,- | 963-130 |
| BID 1T-4LM | 1500 | 0,5 | 10 | ■ D | 155 | 965-230 | 158,- | 963-130 |
| BID 3T-3M | 3000 | 1 | 20 | ■ C | 150 | 965-232 | 235,- | 963-132 |
| BID 3T-3LM | 3000 | 1 | 20 | ■ D | 155 | 965-232 | 235,- | 963-132 |

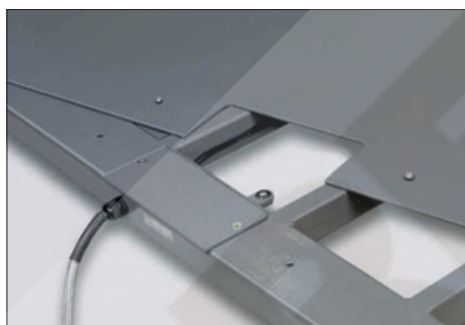
Note: For devices that require verification (conformity assessment according to NAWI 2014/31/EU), please include the verification when placing your order. The initial verification is not possible after delivery. Please inform the full address of the location of use for the initial verification.

Note: For verified scales the weighing bridge must be fixed to the floor. Optionally, with an access ramp, a footplate pair or a pit frame



Floor Scale with screwed-on weighing plate (IP67), verification optional

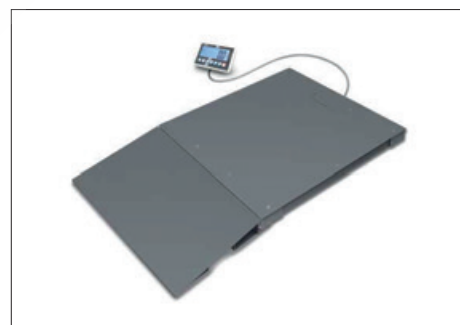
11



1 Weighing plate can be unscrewed - The weighing plate can be conveniently unscrewed for maintenance or cleaning purposes (Exception: BFC 6T-3M)



Easy levelling of the weighing bridge as well as access to the junction box from above



2 Ascending ramp, lacquered steel, see *Accessories*

Features

- **1** Weighing plate: smooth surface, screwed on from the top, so it easy to remove, hygienic and easy to clean (Exception: KERN BFC 6T-3M)
- KERN BFC 6T-3M: Weighing plate welded, steel chequer plate
- 4 silicone-coated steel load cells, IP67 dust and spray protection
- Display device: for details see KERN KFC-TM
- IoT line: networkable balances with user-friendly concept of operation, for details see KERN KFC-TM
- With Real Time Clock as standard: Enables you to log the weighing results with accurate time information. Even if the power supply is interrupted, the balance can continue to work with the correct time
- Benchtop stand incl. wall mount for display device as standard
- Protective working cover included with delivery

Technical data

- Large backlit LCD display, digit height 48 mm
- Weighing platform dimensions W×D×H, steel, powder-coated
 - A** 1000×1000×85 mm
 - B** 1500×1250×85 mm
 - C** 1500×1500×85 mm
 - D** 1500×1500×123 mm
- Dimensions of display device W×D×H 220×145×65 mm
- Permissible ambient temperature -10 °C/40 °C



Accessories

- Protective working cover, scope of delivery 5 items, KERN YBA-A18S05
- **3** Stand to elevate display device, height of stand approx. 1040 mm, KERN BFS-A07
- Pair of base plates to fix the weighing bridge to the floor, for models with weighing plate size
 - A - C** KERN BFS-A06N
 - D** KERN BFS-A10
- **2** Ascending ramp, steel, lacquered, for models with weighing plate size
 - A** 1000×740×90 mm, KERN BFS-A01N
 - B** 1250×740×90 mm, KERN BFS-A02N
 - C** 1500×740×90 mm, KERN BFS-A09N
 - D** 1500×750×120 mm, KERN BFS-A11
- **4** Stable pit frame, steel, lacquered, for models with weighing plate size
 - A** 1090×1090×90 mm, KERN BFS-A03N
 - B** 1590×1340×90 mm, KERN BFS-A04N
 - C** 1590×1590×90 mm, KERN BFS-A08N
- Internal rechargeable battery pack, operating time up to 22 h without backlight, charging time approx. 8 h, KERN YKR-01



- RS-232 interface adapter, KERN KUP-01
- USB interface adapter, KERN KUP-03
- Ethernet interface adapter, KERN KUP-04
- WiFi interface adapter, KERN KUP-05
- Bluetooth interface adapter, KERN KUP-06
- Analogue module, KERN KUP-08
- Extension box for connecting up to three interfaces in parallel, KERN KUP-13
- Memory module (alibi memory), KERN YMM-04
- Signal lamp for visual support of weighing with tolerance range, KERN CFS-A03
- Further details, plenty of further accessories and suitable printers see *Accessories*

STANDARD



OPTION



FACTORY



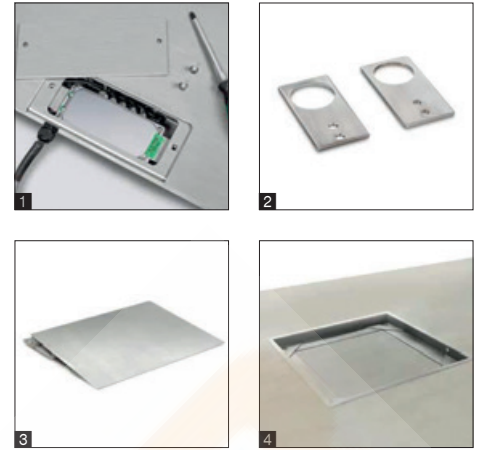
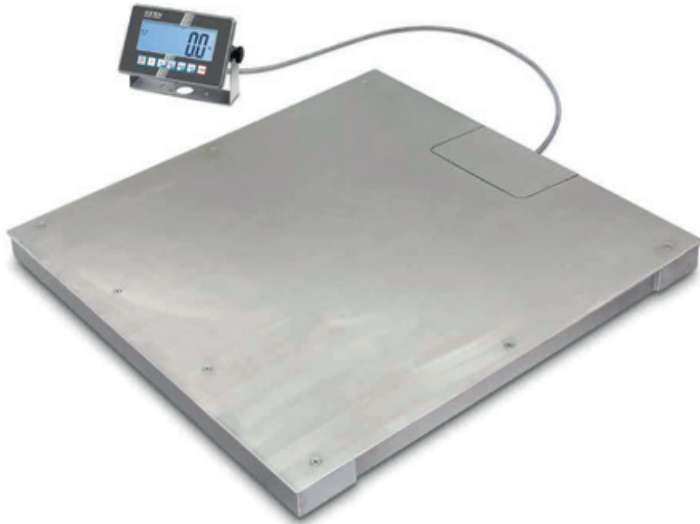
! Shipment via freight forwarder. Please ask for dimensions, gross weight, shipping costs

| Model | Weighing capacity [Max] kg | Readability = Verification value [d] = [e] kg | Minimal load [Min] kg | Cable length of display device approx. m | Net weight approx. kg | Weighing plate | Options | |
|---------------------|----------------------------|---|-----------------------|--|-----------------------|----------------|--------------|---------------------------|
| | | | | | | | Verification | DAkkS Calibr. Certificate |
| KERN | | | | | | | | DAkkS |
| | | | | | | | KERN | KERN |
| BFC 600K-1SM | 600 | 0,2 | 4 | 5 | 105 | A | 965-230 | 963-130 |
| BFC 600K-1M | 600 | 0,2 | 4 | 5 | 140 | B | 965-230 | 963-130 |
| BFC 1.5T-4SM | 1500 | 0,5 | 10 | 5 | 105 | A | 965-230 | 963-130 |
| BFC 1.5T-4M | 1500 | 0,5 | 10 | 5 | 140 | B | 965-230 | 963-130 |
| BFC 3T-3M | 3000 | 1 | 20 | 5 | 140 | B | 965-232 | 963-132 |
| BFC 3T-3LM | 3000 | 1 | 20 | 5 | 155 | C | 965-232 | 963-132 |
| BFC 6T-3M | 6000 | 2 | 40 | 5 | 230 | D | 965-232 | 963-132 |

Note: For devices that require verification (conformity assessment according to NAWI 2014/31/EU), please include the verification when placing your order.

The initial verification is not possible after delivery. Please inform the full address of the location of use for the initial verification.

Note: For verified scales the weighing bridge must be fixed to the floor. Optionally, with an access ramp, a footplate pair or a pit frame



Floor scale with screwed-on weighing plate (IP67) and stainless steel display device (IP68), verification optional

Features

- Tough industry standard suitable for use in harsh industrial applications
- **1** Weighing plate screwed on from the top with stainless steel screws, so it's easy to remove, hygienic and easy to clean
- Weighing bridge: stainless steel, extremely resistant to bending due to material thickness, 4 hermetically welded stainless steel load cells, IP68 dust and spray protection
- Easy levelling of the weighing bridge as well as access to the junction box from above
- Display device: stainless steel, protection against dust and water splashes IP68, for details see KERN XXC-TM
- IoT line: networkable balances with user-friendly concept of operation
- The exchange of data and control commands is optional using up to four interfaces to suit

individual requirements: two wired connections and two wireless connections, for details see KERN XXC-TM

- Available as an option with alibi memory for paperless archiving of weighing results. This also means the results of weighings with mandatory verification can be electronically evaluated and processed further
- Wall mount for display device, standard

Technical data

- Large backlit LCD display, digit height 48 mm
- Weighing platform dimensions W×D×H, stainless steel
 - A** 1000×1000×85 mm
 - B** 1500×1250×85 mm
- Dimensions of display device W×D×H 232×150×80 mm
- Permissible ambient temperature -10 °C/40 °C

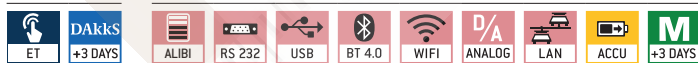
Accessories

- Stand to elevate display device, height of stand approx. 1040 mm, KERN BFS-A07
- **2** Pair of base plates to fix the weighing bridge to the floor, KERN BFN-A03
- **3** Ascending ramp, Stainless steel, for models with weighing plate size
 - A** 1000×740×90 mm, KERN BFN-A05
 - B** 1250×760×85 mm, KERN BFN-A01
- **4** Stable pit frame, Stainless steel, for models with weighing plate size
 - A** 1090×1090×90 mm, KERN BFN-A06
 - B** 1590×1340×90 mm, KERN BFN-A02
- Internal rechargeable battery pack, operating time up to 22 h without backlight, charging time approx. 8 h, must be ordered at purchase, KERN YKR-01
- Memory module with real time clock (alibi memory), KERN YMM-06
- Internal data interface RS-232, interface cable included, KERN KUM-01
- Internal data interface USB, interface cable included, KERN KUM-03
- Internal data interface Ethernet, interface cable included, KERN KUM-04
- Internal data interface WiFi, KERN KUM-05
- Internal data interface Bluetooth, KERN KUM-06
- Analogue module, KERN KUM-08
- Further details, plenty of further accessories and suitable printers see *Accessories*

STANDARD



OPTION



| Model | Weighing capacity [Max] kg | Readability = Verification value [d] = [e] kg | Minimal load [Min] kg | Cable length of display device approx. m | Net weight approx. kg | Weighing plate | Options | |
|---------------------|----------------------------|---|-----------------------|--|-----------------------|----------------|--------------|--------------|
| | | | | | | | Verification | Options |
| KERN | | | | | | | M | DAkkS |
| BXC 600K-1SM | 600 | 0,2 | 4 | 5 | 85 | A | KERN | KERN |
| BXC 1.5T-4SM | 1500 | 0,5 | 10 | 5 | 85 | A | 965-230 | 963-130 |
| BXC 1.5T-4M | 1500 | 0,5 | 10 | 5 | 120 | B | 965-230 | 963-130 |
| BXC 3T-3M | 3000 | 1 | 20 | 5 | 150 | B | 965-232 | 963-132 |

Note: For devices that require verification (conformity assessment according to NAWI 2014/31/EU), please include the verification when placing your order. The initial verification is not possible after delivery. Please inform the full address of the location of use for the initial verification.

Note: For verified scales the weighing bridge must be fixed to the floor. Optionally, with an access ramp, a footplate pair or a pit frame

! Shipment via freight forwarder. Please ask for dimensions, gross weight, shipping costs



Highly versatile weighing beams (IP67) for large loads to 6 t

Features

- Flexible solution for weighing large, bulky or long items, thanks to freely positionable weighing beams and a 5 m (!) long connecting cable between the beams
- Thanks to rechargeable battery operation (optional), compact, lightweight construction, it is suitable for the use in several locations
- Weighing beams: steel, painted, 4 silicone-coated aluminium load cells, protection against dust and water splashes IP67
- **1** Sturdy handles for transporting the weighing beams
- **1** KERN UFA-L: Each weighing beam has a roller and handle for easy transport of the scale, see larger picture
- Display device: for details see KERN KFB-TM
- Benchtop stand incl. wall mount for display device as standard
- Totalising of weights and piece counts
- Protective working cover included with delivery

- KERN UFA-S: Model with short weighing beams, ideal for weighing compact items or animals in transport boxes
- Our floor scales are delivered in a robust wooden box. This protects the high-quality weighing technology from environmental influences and stresses during transportation

Technical data

- Large backlit LCD display, digit height 52 mm
- Dimensions of display device W×D×H 250×160×65 mm
- Cable length of display device approx. 5 m
- Connection cable approx. 5 m
- Permissible ambient temperature -10 °C/40 °C

Accessories

- Protective working cover over the display device, scope of delivery 5 items, KERN KFB-A02S05
- **2** Stand to elevate display device, height of stand approx. 1040 mm, KERN BFS-A07

- Internal rechargeable battery pack, operating time up to 35 h without backlight, charging time approx. 10 h, KERN KFB-A01
- Bluetooth data interface for wireless data transfer to PC or tablets, must be ordered at purchase. When installing the Bluetooth data interface, the RS-232 data interface can no longer be used, KERN KFB-A03
- Analogue module, must be ordered at purchase, not possible in combination with signal lamp or rechargeable battery pack
0–10 V: KERN KFB-A04
4–20 mA: KERN KFB-A05
- **3** Signal lamp for visual support of weighing with tolerance range, not possible in combination with analogue module, KERN CFS-A03
- **4** Large display with superior display size KERN YKD-A02
- Y-cable for parallel connection of two terminal devices to the RS-232 interface on the scale, e.g. signal lamp and printer, KERN CFS-A04
- Cable with special length 15 m, between display device and platform, for verified models which must be ordered at the time of purchase, KERN BFB-A03
- Further details, plenty of further accessories and suitable printers see *Accessories*

! Shipment via freight forwarder. Please ask for dimensions, gross weight, shipping costs

STANDARD



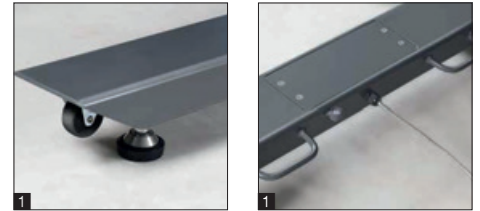
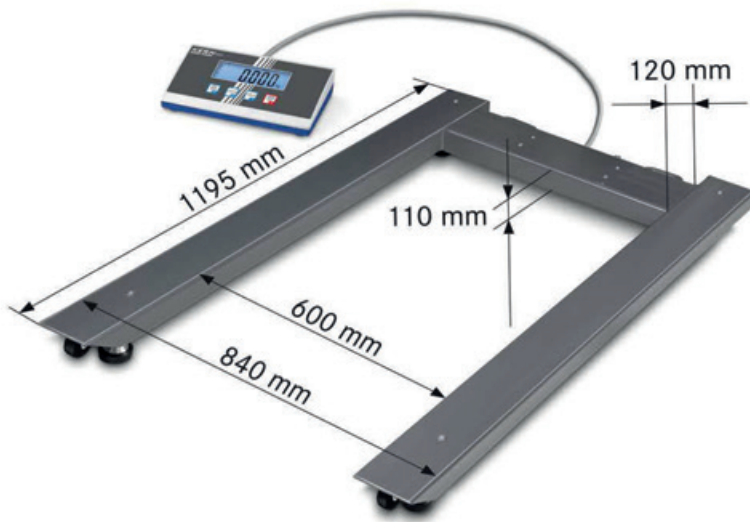
OPTION



FACTORY



| Model | Weighing capacity [Max] kg | Readability [d] kg | Dimensions Weighing beam W×D×H mm | Net weight approx. kg | Options |
|--------------------|----------------------------------|--------------------------|--|-----------------------------|--|
| | | | | | DAkKS Calibr. Certificate DAkKS KERN |
| UFA 600K-1S | 600 | 0,2 | 870×120×84 | 36 | 963-130 |
| UFA 1.5T0.5 | 1500 | 0,5 | 1270×170×85 | 40 | 963-130 |
| UFA 3T1 | 3000 | 1 | 1270×170×85 | 38 | 963-132 |
| UFA 3T-3L | 3000 | 1 | 2000×120×90 | 60 | 963-132 |
| UFA 6T-3 | 6000 | 2 | 1200×160×115 | 90 | 963-132 |
| UFA 6T-3L | 6000 | 2 | 2000×160×115 | 130 | 963-132 |



Pallet scale with steel load support (IP67) and the best price-to-performance ratio

Features

- Thanks to battery operation, compact, light-weight construction, it is suitable for the use in several locations
- Load support: steel, powder coated, 4 silicone-coated aluminium load cells, protection against dust and water splashes IP67
- **1** The scale can be easily transported using rollers and a handle and does not require much storage space
- Protective working cover included with delivery
- **2** Our floor scales are delivered in a robust wooden box. This protects the high-quality weighing technology from environmental influences and stresses during transportation

Technical data

- Large LCD display, digit height 25 mm
- Dimensions of display device W×D×H 235×114×51 mm
- Cable length of display device approx. 5 m
- Optional battery operation, 4×1.5 V AA not included in scope of delivery, operating time up to 60 h
- Net weight approx. 55 kg
- Permissible ambient temperature -10 °C/40 °C

Accessories

- Protective working cover over the display device, scope of delivery 5 items, KERN EOB-A04BS05
- Stand to elevate display device, height of stand approx. 1000 mm, KERN EOB-A02B

11

! Shipment via freight forwarder. Please ask for dimensions, gross weight, shipping costs

STANDARD



OPTION



| Model | Weighing capacity | Readability | Options |
|------------|-------------------|-------------|---------------------------|
| | | | DAkkS Calibr. Certificate |
| KERN | [Max] kg | [d] kg | DAkkS KERN |
| UIB 600K-1 | 600 | 0,2 | 963-130 |
| UIB 1.5T-4 | 1500 | 0,5 | 963-130 |
| UIB 3T-3 | 3000 | 1 | 963-132 |



High-resolution multi-range pallet scale with a wide range of interfaces, verification optional

Features

- Ideal, when high maximum loads need to be weighed, but in the lower load range you still need high resolution. This means that two balances can be replaced with one
- High mobility thanks to rechargeable battery operation (optional)
- Display device: Protection against dust and water splashes IP65
- Load support: steel, powder coated, 4 load cells, alloy steel, silicone-coated, protection against dust and water splashes IP67
- The scale can be easily transported using rollers and a handle and does not require much storage space
- Totalising of weights and piece counts

- KERN Communication Protocol (KCP): The KCP permits searching and remote control of the balance using external control devices or computers
- Thanks to interfaces such as RS-232 or USB, WiFi, Bluetooth, Ethernet (optional), the scale can easily be connected to existing networks. Data exchange between the scale, PC or printer
- Protective working cover included with delivery

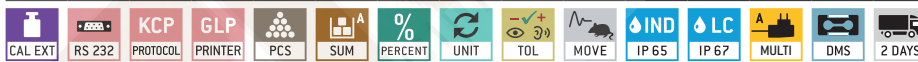
Technical data

- Large LCD display, digit height 25 mm
- Dimensions of display device WxDxH 268x115x80 mm
- Permissible ambient temperature -10 °C/40 °C

Accessories

- Protective working cover, scope of delivery 5 items, KERN EOC-A01S05
- Stand to elevate display device, height of stand approx. 1040 mm, KERN BFS-A07
- Internal rechargeable battery pack, operating time up to 43 h without backlight, charging time approx. 3 h, KERN KFB-A01
- USB data interface, for transferring weighing to the PC, printer etc., must be ordered at purchase, KERN KIB-A03
- Bluetooth data interface for wireless data transfer to PC or tablets, must be ordered at purchase, KERN KIB-A04
- WiFi interface for wireless connection of the balance to networks and WiFi capable devices, such as tablets, laptops or smartphones, continuous data transfer, must be ordered at purchase, KERN KIB-A10
- Ethernet data interface, to connect an IP-based Ethernet network, continuous data transfer, must be ordered at purchase, KERN KIB-A02
- Signal lamp, including interface, for visual support of weighing with tolerance range, must be ordered at purchase, KERN KIB-A06
- Alibi memory, including USB interface for exporting weighing results to external data storage media, such as, for example, USB sticks, hard drives, etc., must be ordered at purchase, KERN KIB-A01
- Verification plug, for verified balances this enables you to separate the display device and platform without affecting the verification, e.g. for installing the scale in a packing and dispatch table, pit frame etc. at a later date. Please order this at the same time as you purchase your scale, KERN KIB-A12

STANDARD



OPTION



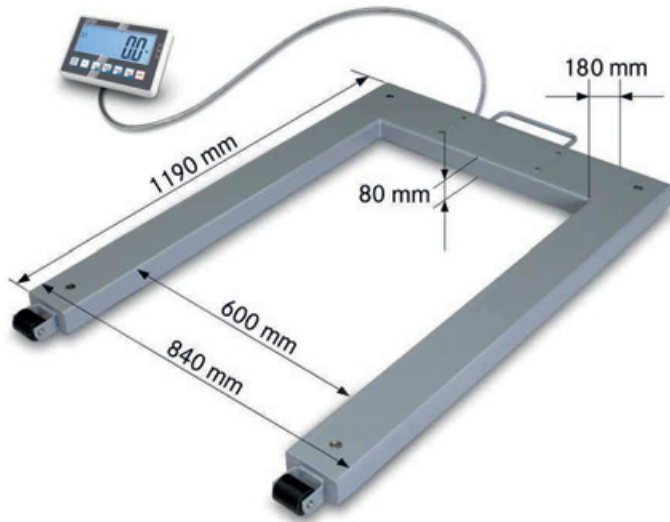
FACTORY



| Model | Weighing capacity [Max] kg | Readability = Verification value [d] = [e] kg | Minimal load [Min] kg | Cable length of display device approx. m | Net weight approx. kg | Options | |
|---|----------------------------------|--|--------------------------------|---|--------------------------------|------------------|---------------------------|
| | | | | | | Verification | DAkKS Calibr. Certificate |
| KERN | | | | | | M KERN | DAkKS KERN |
| UID 600K-1M | 600 | 0,2 | 4 | 5 | 44 | 965-230 | 963-130 |
| UID 1500K-1M | 1500 | 0,5 | 10 | 5 | 44 | 965-230 | 963-130 |
| UID 3000K-0M | 3000 | 1 | 20 | 5 | 44 | 965-232 | 963-132 |
| Multi-range balance, with increasing load it switches automatically to the next largest weighing range [Max] and readout [d] and when the load is fully removed, the balance switches back to the lower range | | | | | | | |
| UID 600K-1DM | 300 600 | 0,1 0,2 | 2 4 | 5 | 44 | 965-230 | 963-130 |
| UID 1500K-1DM | 600 1500 | 0,2 0,5 | 4 10 | 5 | 44 | 965-230 | 963-130 |
| UID 3000K-ODM | 1500 3000 | 0,5 1 | 10 20 | 5 | 44 | 965-232 | 963-132 |

Note: For devices that require verification (conformity assessment according to NAWI 2014/31/EU), please include the verification when placing your order. The initial verification is not possible after delivery. Please inform the full address of the location of use for the initial verification.

! Only one optional interface can be installed and used
! Shipment via freight forwarder. Please ask for dimensions, gross weight, shipping costs



Pallet scale with steel load support (IP67), verification optional

Features

- Thanks to rechargeable battery operation (optional), compact, lightweight construction, it is suitable for the use in several locations
- Display device: for details see KERN KFC-TM
- IoT line: networkable balances with user-friendly concept of operation, for details see KERN KFC-TM
- With Real Time Clock as standard: Enables you to log the weighing results with accurate time information. Even if the power supply is interrupted, the balance can continue to work with the correct time

- Load support: steel, powder coated, 4 load cells, alloy steel, silicone-coated, protection against dust and water splashes IP67, Weighing bridge can also be delivered as component without the display device, for details see KERN KFU-V20
- Two wheels for easy transportation of the scale
- Weighing with tolerance range (checkweighing): A visual and audible signal assists the rapid checking of items on pallets
- Totalising of weights and piece counts
- Protective working cover included with delivery

Technical data

- Large backlit LCD display, digit height 48 mm
- Dimensions of display device W×D×H 220×145×65 mm
- Cable length of display device approx. 5 m
- Permissible ambient temperature -10 °C/40 °C

Accessories

- Protective working cover, scope of delivery 5 items, KERN YBA-A18S05
- 1 Stand to elevate display device, height of stand approx. 1040 mm, KERN BFS-A07
- Internal rechargeable battery pack, operating time up to 22 h without backlight, charging time approx. 8 h, KERN YKR-01
- RS-232 interface adapter, KERN KUP-01
- USB interface adapter, KERN KUP-03
- Ethernet interface adapter, KERN KUP-04
- WiFi interface adapter, KERN KUP-05
- Bluetooth interface adapter, KERN KUP-06
- Analogue module, KERN KUP-08
- Extension box for connecting up to three interfaces in parallel, KERN KUP-13
- Memory module (alibi memory), KERN YMM-04
- 2 Signal lamp for visual support of weighing with tolerance range, KERN CFS-A03
- Further details, plenty of further accessories and suitable printers see *Accessories*

STANDARD



OPTION



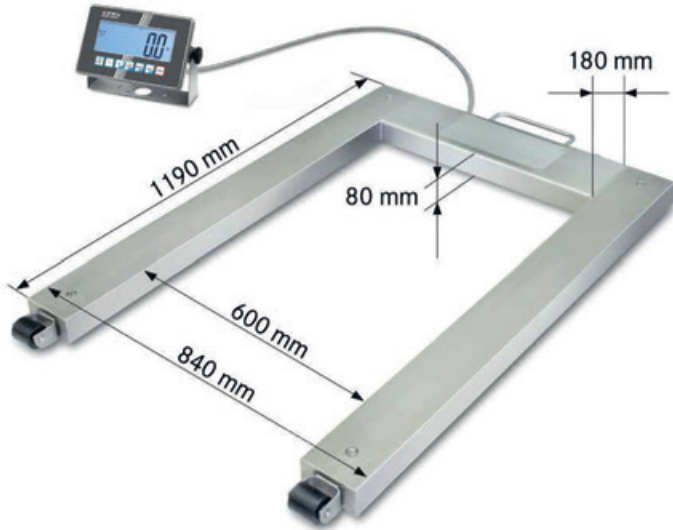
FACTORY



| Model | Weighing capacity [Max] [kg] | Readability = Verification value [d] = [e] [kg] | Minimal load [Min] [kg] | Net weight approx. [kg] | Options | |
|-------------|------------------------------|---|-------------------------|-------------------------|--------------|---------------------------|
| | | | | | Verification | DAkkS Calibr. Certificate |
| KERN | | | | | M | DAkkS |
| UFC 600K-1M | 600 | 0,2 | 4 | 55 | KERN 965-230 | KERN 963-130 |
| UFC 1.5T-4M | 1500 | 0,5 | 10 | 55 | KERN 965-230 | KERN 963-130 |

Note: For devices that require verification (conformity assessment according to NAWI 2014/31/EU), please include the verification when placing your order. The initial verification is not possible after delivery. Please inform the full address of the location of use for the initial verification.

! Shipment via freight forwarder. Please ask for dimensions, gross weight, shipping costs



Pallet scale with stainless steel load support (IP67) and stainless steel display device (IP68), verification optional

Features

- Thanks to rechargeable battery operation, compact, lightweight construction, it is suitable for the use in several locations
- Load support: stainless steel, for details see KERN KFU-V30
- 4 silicone-coated steel load cells, IP67 dust and spray protection
- Ideal for the increased hygienic requirements in the food industries
- Your support in a HACCP-compliant quality system
- Display device: stainless steel, protection against dust and water splashes IP68, for details see KERN XXC-TM
- IoT line: networkable balances with user-friendly concept of operation
- The exchange of data and control commands is optional using up to four interfaces to suit individual requirements: two wired connections and two wireless connections, for details see KERN KXC-TM

- Available as an option with alibi memory for paperless archiving of weighing results. This also means the results of weighings with mandatory verification can be electronically evaluated and processed further
- Wall mount for display device, standard
- The scale can be easily transported using rollers and a handle and does not require much storage space
- Hold function: When the weighing conditions are unstable, a stable weight is calculated determining an average value
- Weighing with tolerance range (checkweighing): a visual and audible signal helps with portioning, dispensing or grading
- Summation of weight values

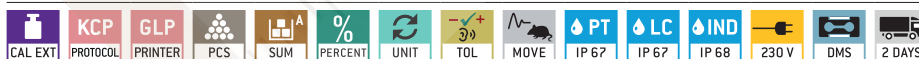
Technical data

- Large backlit LCD display, digit height 48 mm
- Dimensions of display device WxDxH 232x150x80 mm
- Permissible ambient temperature -10 °C/40 °C

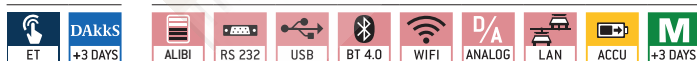
Accessories

- **1** Stand to elevate display device, height of stand approx. 1040 mm, KERN BFS-A07
- Internal rechargeable battery pack, operating time up to 22 h without backlight, charging time approx. 8 h, KERN YKR-01
- Memory module with real time clock (alibi memory), KERN YMM-06
- Internal data interface RS-232, interface cable included, KERN KUM-01
- Internal data interface USB, interface cable included, KERN KUM-03
- Internal data interface Ethernet, interface cable included, KERN KUM-04
- Internal data interface WiFi, KERN KUM-05
- Internal data interface Bluetooth, KERN KUM-06
- Analogue module, KERN KUM-08
- Further details, plenty of further accessories and suitable printers see *Accessories*

STANDARD



OPTION FACTORY



| Model | Weighing capacity [Max] kg | Readability = Verification value [d] = [e] kg | Minimal load [Min] kg | Cable length of display device approx. m | Net weight approx. kg | Options | |
|--------------------|----------------------------|---|-----------------------|--|-----------------------|------------------|---------------------------|
| | | | | | | Verification | DAkKS Calibr. Certificate |
| KERN | | | | | | M KERN | DAkKS KERN |
| UXC 600K-1M | 600 | 0,2 | 4 | 5 | 55 | 965-230 | 963-130 |
| UXC 1.5T-4M | 1500 | 0,5 | 10 | 5 | 50 | 965-230 | 963-130 |

Note: For devices that require verification (conformity assessment according to NAWI 2014/31/EU), please include the verification when placing your order. The initial verification is not possible after delivery. Please inform the full address of the location of use for the initial verification.

! Shipment via freight forwarder. Please ask for dimensions, gross weight, shipping costs

11



Compact, robust drive-through scale – particularly mobile thanks to its carrying handle, rollers and lightweight construction

Features

- Drive-through scales enable accurate weighing of goods during a production process, without having to unload them. In this way the weighing process can be perfectly integrated into the workflow and there is no significant loss of time. Ideal for rapid weighing of e.g. wire cage trolleys, shelf trolleys, container trolleys, storage trolleys, sack trucks, transpallets, mobile containers, containers refuse etc.
- Low platform height and integrated access ramps on both sides facilitate access
- Weighing bridge: Steel, powder coated, 4 silicon-coated aluminium load cells with protection against dust and water splashes to IP67
- **1** Level indicator to level the balance precisely
- **2** The scale can be easily transported using rollers and a handle and does not require much storage space
- Wall mount for the display device, as standard, only for models without a stand
- Protective working cover included with delivery
- **3** Our floor scales are delivered in a robust wooden box. This protects the high-quality weighing technology from environmental influences and stresses during transportation

Technical data

- Large LCD display, digit height 25 mm
- Platform height in the drive-through area: 40 mm
- Dimensions weighing surface, steel, lacquered WxD 800x800 mm (Without ramps)
- Overall dimensions WxDxH 1000x1000x80 mm
- Dimensions of display device WxDxH 235x114x51 mm
- Cable length of display device approx. 5 m
- Optional battery operation, 4x1.5 V AA not included in scope of delivery, operating time up to 60 h
- Permissible ambient temperature -10 °C/40 °C

Accessories

- Protective working cover over the display device, scope of delivery 5 items, KERN EOB-A04BS05
- Pair of base plates to fix the weighing bridge to the floor, KERN BIC-A07

11

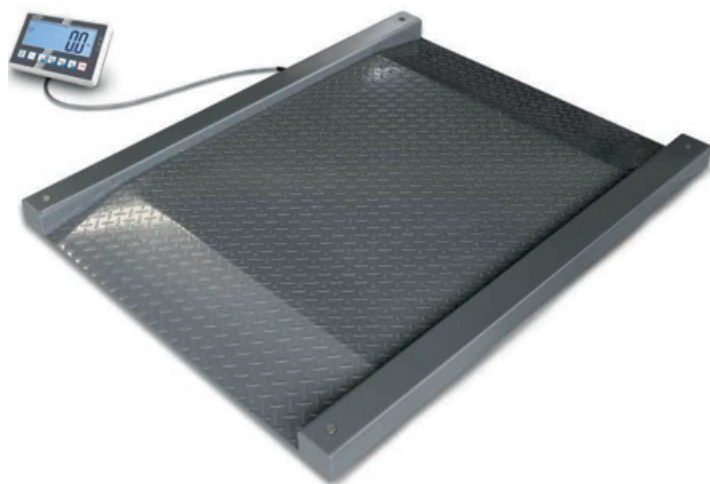
STANDARD



OPTION



| Model | Weighing capacity [Max] kg | Readability [d] kg | Net weight approx. kg | Options |
|------------------------|----------------------------------|--------------------------|-----------------------------|--|
| | | | | DAkKS Calibr. Certificate DAkKS KERN |
| KERN NIB 300K-1 | 300 | 0,1 | 40 | 963-129 |
| KERN NIB 600K-2 | 600 | 0,2 | 40 | 963-130 |



Networkable drive-through scale (IP67), verification optional

Features

- Drive-through scale for rapid weighing of e.g. wire cage trolleys, shelf trolleys, transpallets, mobile containers, containers refuse etc.
- Weighing bridge: out of anti-slip corrugated steel, 4 silicone-coated steel load cells, IP67 dust and spray protection
- Display device: for details see KERN KFC-TM
- IoT line: networkable balances with user-friendly concept of operation, for details see KERN KFC-TM
- With Real Time Clock as standard: Enables you to log the weighing results with accurate time information. Even if the power supply is interrupted, the balance can continue to work with the correct time
- Protective working cover included with delivery

Technical data

- Large backlit LCD display, digit height 48 mm
- Dimensions weighing surface, steel, powder-coated
 - A** W×D 1000×1000 mm (Without ramps)
 - B** W×D 1200×1200 mm (Without ramps)
- Overall dimensions W×D×H
 - A** 1600×1220×95 mm
 - B** 1800×1420×95 mm
- Platform height in the drive-through area: 80 mm
- Dimensions of display device W×D×H 220×145×65 mm
- Cable length of display device approx. 5 m
- Permissible ambient temperature -10 °C/40 °C

Accessories

- Protective working cover, scope of delivery 5 items, KERN YBA-A18S05
- Stand to elevate display device, height of stand approx. 1040 mm, KERN BFS-A07
- Internal rechargeable battery pack, operating time up to 22 h without backlight, charging time approx. 8 h, KERN YKR-01
- Pair of base plates to fix the weighing bridge to the floor, KERN BFS-A06N
- RS-232 interface adapter, KERN KUP-01
- USB interface adapter, KERN KUP-03
- Ethernet interface adapter, KERN KUP-04
- WiFi interface adapter, KERN KUP-05
- Bluetooth interface adapter, KERN KUP-06
- Analogue module, KERN KUP-08
- Extension box for connecting up to three interfaces in parallel, KERN KUP-13
- Memory module (alibi memory), KERN YMM-04
- **1** Signal lamp for visual support of weighing with tolerance range, KERN CFS-A03
- Further details, plenty of further accessories and suitable printers see *Accessories*

STANDARD

| | | | | | | | | | | | | | | | |
|---------|-----|--------------|------------|-----|-----|---------|------|-----|------|-------|-------|----|-------|-----|--------|
| CAL EXT | KUP | KCP PROTOCOL | GLP INTERN | PCS | SUM | PERCENT | UNIT | TOL | MOVE | IP 67 | IP 67 | LC | MULTI | DMS | 2 DAYS |
|---------|-----|--------------|------------|-----|-----|---------|------|-----|------|-------|-------|----|-------|-----|--------|

| | |
|---------|---------|
| OPTION | FACTORY |
| ET | ALIBI |
| RS 232 | M |
| USB | +3 DAYS |
| BT 4.0 | |
| WIFI | |
| D/A | |
| LAN | |
| ACCU | |
| DAKkS | |
| +3 DAYS | |

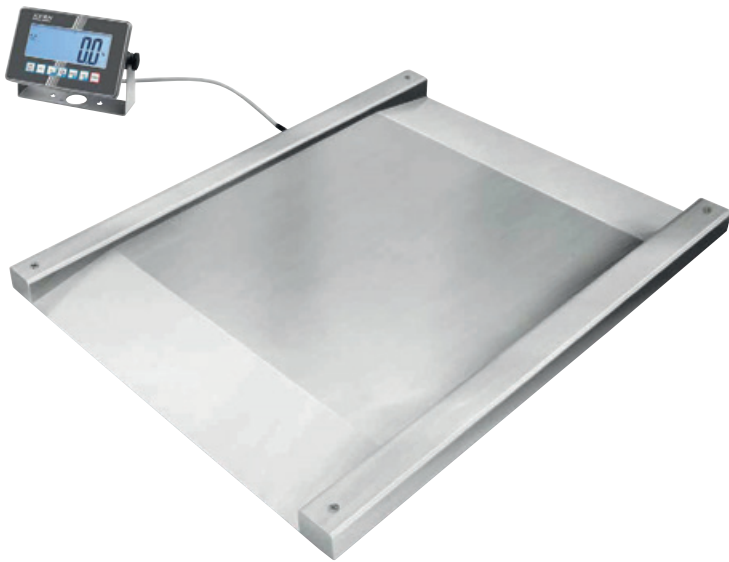
! Shipment via freight forwarder. Please ask for dimensions, gross weight, shipping costs

| Model | Weighing capacity [Max] kg | Readability = Verification value [d] = [e] kg | Minimal load [Min] kg | Net weight approx. m | Weighing plate | Options | |
|--------------|----------------------------|---|-----------------------|----------------------|----------------|--------------|---------------------------|
| | | | | | | Verification | DAKkS Calibr. Certificate |
| KERN | | | | | | M | DAKkS KERN |
| NFC 600K-1M | 600 | 0,2 | 4 | 140 | A | 965-230 | 963-130 |
| NFC 600K-1LM | 600 | 0,2 | 4 | 165 | B | 965-230 | 963-130 |
| NFC 1.5T-4M | 1500 | 0,5 | 10 | 140 | A | 965-230 | 963-130 |
| NFC 1.5T-4LM | 1500 | 0,5 | 10 | 155 | B | 965-230 | 963-130 |

Note: For devices that require verification (conformity assessment according to NAWI 2014/31/EU), please include the verification when placing your order. The initial verification is not possible after delivery. Please inform the full address of the location of use for the initial verification.

Note: For verified scales the weighing bridge must be fixed to the floor. Optionally, with an access ramp, a footplate pair or a pit frame

11



Stainless steel drive-through scale (IP67) with stainless steel display device (IP68), verification optional

Features

- Robust stainless steel drive-through scale for rapid weighing of e.g. laundry carts, container trolleys, roller containers, etc.
- Ideal for the ever-increasing hygienic requirements in the food, pharmaceutical and chemical industries
- Your support in a HACCP-compliant quality system
- Weighing bridge: stainless steel, extremely resistant to bending due to material thickness, 4 welded stainless steel load cells, IP68 dust and spray protection
- Display device: stainless steel, protection against dust and water splashes IP68, for details see KERN XXC-TM
- IoT line: networkable balances with user-friendly concept of operation
- The exchange of data and control commands is optional using up to four interfaces to suit

individual requirements: two wired connections and two wireless connections, for details see KERN XXC-TM

- Available as an option with alibi memory for paperless archiving of weighing results. This also means the results of weighings with mandatory verification can be electronically evaluated and processed further
- Wall mount for display device, standard

Technical data

- Large backlit LCD display, digit height 48 mm
- Dimensions weighing surface, stainless steel, WxD 1000x1000 mm (Without ramps)
- Platform height in the drive-through area: 80 mm
- Overall dimensions WxDxH 1600x1220x95 mm
- Dimensions of display device WxDxH 232x150x80 mm
- Permissible ambient temperature -10 °C/40 °C

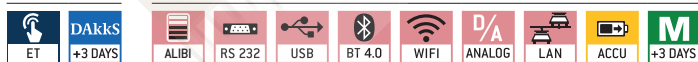
Accessories

- Stand to elevate display device, height of stand approx. 1040 mm, KERN BFS-A07
- Pair of base plates to fix the weighing bridge to the floor, KERN BFN-A03
- Internal rechargeable battery pack, operating time up to 22 h without backlight, charging time approx. 8 h, must be ordered at purchase, KERN YKR-01
- Memory module with real time clock (alibi memory), KERN YMM-06
- Internal data interface RS-232, interface cable included, KERN KUM-01
- Internal data interface USB, interface cable included, KERN KUM-03
- Internal data interface Ethernet, interface cable included, KERN KUM-04
- Internal data interface WIFI, KERN KUM-05
- Internal data interface Bluetooth, KERN KUM-06
- Analogue module, KERN KUM-08
- Further details, plenty of further accessories and suitable printers see *Accessories*

STANDARD



OPTION FACTORY



| Model | Weighing capacity [Max] kg | Readability = Verification value [d] = [e] kg | Minimal load [Min] kg | Cable length of display device approx. m | Net weight approx. kg | Options | |
|--------------------|----------------------------|---|-----------------------|--|-----------------------|--------------|---------------------------|
| | | | | | | Verification | DAkkS Calibr. Certificate |
| KERN | | | | | | M | DAkkS |
| NXC 600K-1M | 600 | 0,2 | 4 | 5 | 105 | KERN 965-230 | KERN 963-130 |
| NXC 1.5T-4M | 1500 | 0,5 | 10 | 5 | 105 | KERN 965-230 | KERN 963-130 |

Note: For devices that require verification (conformity assessment according to NAWI 2014/31/EU), please include the verification when placing your order. The initial verification is not possible after delivery. Please inform the full address of the location of use for the initial verification.

Note: For verified scales the weighing bridge must be fixed to the floor. Optionally, with an access ramp, a footplate pair or a pit frame

! Shipment via freight forwarder. Please ask for dimensions, gross weight, shipping costs