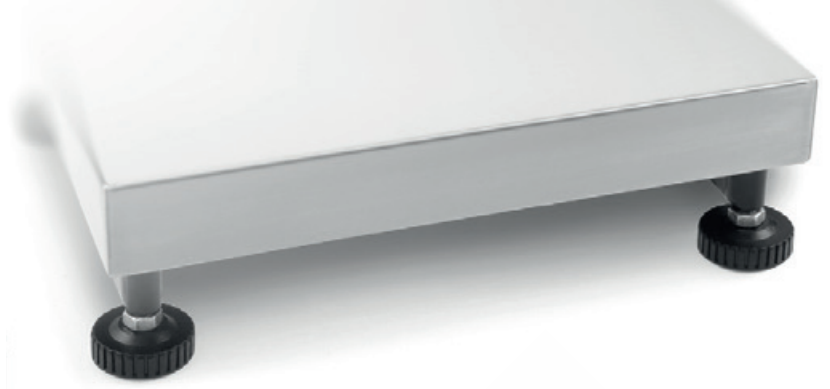


# 13



## DISPLAY DEVICES, PLATFORMS, WEIGHING BRIDGES

### Customized individual weighing systems, without verification

KERN offers a range of KERN display devices and KERN weighing units, such as platform scales, floor scales, pallet scales and drive-through scales, which you can customize to make your ideal scale. You choose the components, KERN handles the rest.

### Assembly

KERN delivers the complete scale which is ready to use. Prices for assembly can be found in the "Assembly" price table. On request we can also create a calibration certificate in accordance with DAkkS at an additional price, see *DAkkS Calibration Service*.

### Customizing individual weighing systems which can be verified or are verified

In order to provide the complete package, as well as assembling your individual weighing system, KERN will also carry out the manufacturer's initial verification/evaluation for conformity in accordance with EC directives as a commercial scales of verification class III.

In accordance with the European verification regulations, when assembling a display device with a weighing unit you must take the following notes into account:

- Only elements which can be verified with type approval or OIML test certificate can be combined into a weighing system which can be verified. Possible models are marked with "M".
- Platforms with load cells, provided as third-party products which have an OIML test certificate can be included.
- It will not be possible to carry out verification at a later date, e.g. after assembly and delivery of the weighing system. So please order the verification at the same time as you order the weighing system.

You will find a wide variety of display devices, platforms, weighing bridges, etc. in KERN's product range and these can be put together to create your ideal scale. You simply choose the components, KERN handles the rest.



## The individual KERN steps:

	Weighing capacity	Model
<b>1. Proof of compatibility</b> This is mandatory by law and includes testing by using type approvals, whether the connection values of the display device match the connection data of the weighing unit.	0 up ... kg all Weighing capacities	<b>KERN</b> <b>965-240</b>
<b>2. Assembly</b> After testing for suitability using the proof of compatibility, the weighing system will be hard wired by KERN. The weighing system will then be tested in accordance with regulations of 2014/31/EU, the European directive for non-automatic weighing instruments and prepared for conformity assessment.	up ≤ 50 kg up ≤ 350 kg up ≤ 1500 kg up ≤ 2900 kg up ≤ 6000 kg	<b>965-411</b> <b>965-412</b> <b>965-413</b> <b>965-414</b> <b>965-415</b>
<b>3. Initial verification by the manufacturer</b> <b>Conformity assessment ("Initial verification by the manufacturer")</b> KERN is authorised to carry out the conformity assessment ("initial verification by the manufacturer") in accordance with 2014/31/EU, the European directive for non-automatic weighing instruments and is therefore authorised to introduce the weighing system onto the market, after the test has been carried out successfully and the conformity mark has been affixed.	up ≤ 5 kg up ≤ 50 kg up ≤ 350 kg up ≤ 1500 kg up ≤ 2900 kg up ≤ 6000 kg	<b>965-227</b> <b>965-228</b> <b>965-229</b> <b>965-230</b> <b>965-231</b> <b>965-232</b>
<b>4. Declaration of conformity</b> KERN issues this after the initial verification by the manufacturer Conformity assessment has been carried out successfully and sends it with the weighing system at no additional cost, and it can be used in areas regulated by law.		

## Modifications and special services

Description	Model
	<b>KERN</b>
<b>Cable extensions for platform scales</b>	
up to 4 m extension	<b>965-403</b>
up to 7 m extension	<b>965-404</b>
up to 20 m extension	<b>965-405</b>
<b>Individual settings</b>	
Scale with NAWI conformity evaluation, only in combination with KERN 965-240	<b>965-401</b>
Other adjustments in the balance or software changes	<b>965-407</b>
<b>Plug connection (replaces the fixed cable connection between the display device and platform with a plug connection which can be disconnected)</b>	
Balances with type approval and verification (according to time spent)	only possible with separable, verifiable plug connection with identification chip (e.g. KERN KIB-A12), for the corresponding models (e.g. IOC, BID, UID) please order when purchasing
Balances with type approval, no verification	<b>965-406</b>

**I** Delivery time for modifications & special services approx. 5-8 working days

## Order example

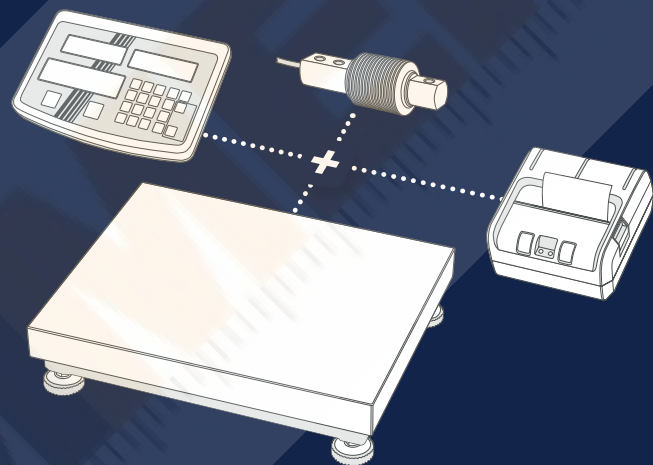
	Model
<b>KFP 30V20M</b> platform and <b>KEN-TM</b> display device with cable extension (4 m) and setting an individual preload.	<b>KERN</b>
KERN platform	<b>KFP 30V20M</b>
KERN display device	<b>KFN-TM</b>
Proof of compatibility	<b>965-240</b>
Cable extension	<b>965-403</b>
Setting the preload	<b>965-401</b>
Assembly	<b>965-411</b>
Verification at the factory KERN	<b>965-228</b>
<b>Complete scale</b> (verified)	

# NOTHING IS IMPOSSIBLE – KERN CUSOS

Perfectly working weighing solutions with customized platform sizes, specific software solutions and coordinated peripherals – to suit your processes.

Our KERN Customized Solution Service offers maximum freedom of choice – give it a try.

Zoologischer Garten Schwerin/Sven P. Peter



## KERN CUSOS – Perfectly tailored to you and your requirements

Powerful balances and efficient weighing systems which support you in your work, should be adapted to your individual requirements. Standard models are therefore not sufficient under some circumstances.

For this reason, at KERN it is our pleasure to work with you to develop a solution which is appropriate and tailor-made for you. From a range of platform sizes through to personalised weighing systems within large production plants, we can provide the right measuring technology.

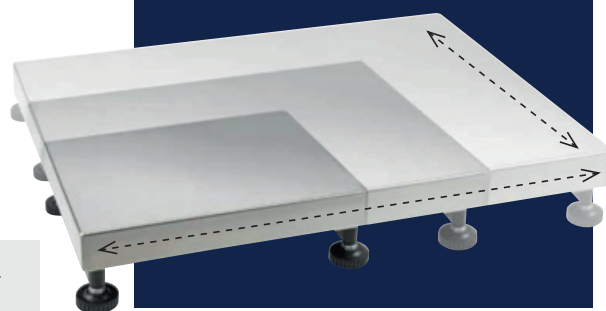
Through close collaboration with your engineers and users, we first check the special requirements for your application. Using this data we will put together the appropriate platform scale, floor scale or a completely personalised weighing system for you, to fit your requirements perfectly.

**Tip:** Save money and ask our experts. Maybe your desired combination is already included in our standard range?



**CUSTOMIZED  
SOLUTION SERVICE**

For details scan QR Code:

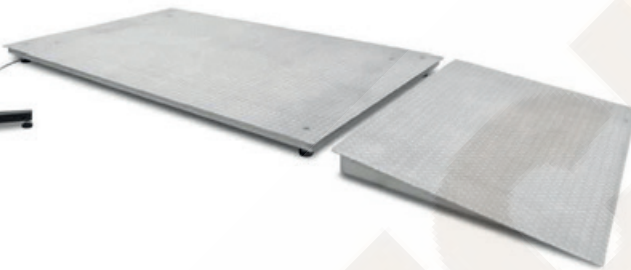




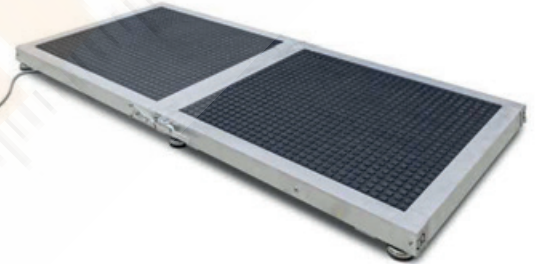
For perfect integration into existing and newly configured processes: individual platform construction in individual formats



Ideal for customised requirements



From horses to rhinos – weighing large animals is child's play with our tailor-made solutions



## Your advantage – you have the choice

Choose from a wide range of display devices. Economical and lightweight (plastic version), robust and water-resistant (stainless steel version), with numeric key pad, battery or mains operation or the most varied interfaces.

Load cells to construct automatic weighing systems such as filling or dosing systems, such as might be used, for example, in manufacturing or filling processes in the chemical industry, construction industry, mineral industry, etc.

On many occasions, load cells are also used in the construction of checkweighers or for installation into packaging machines of any type in the food industry.

The weighing data can be forwarded to peripheral devices such as signal lamps, printers and laptops or be used to switch valves, or similar devices.

## What's your individual requirement?

Just tell us the size you want and the material you want for your platform and other essential construction details – done! We'll take care of the implementation.

Following you will find a selection of our platforms, load cells and evaluation devices – the starting point for your individual system solution!

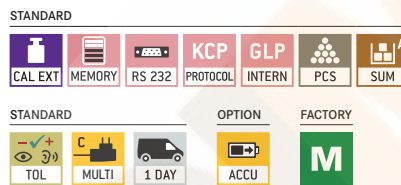
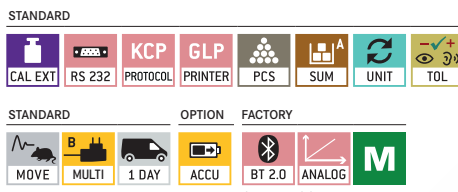


## 1 KERN KFB-TM

Display device with large digits – easy to read and optional analogue output for controlling systems (PLC) etc.

## 2 KERN KFS-TM

Professional indicator with 3 displays, also with EC type approval [M]



Features	Model KERN 1 KFB-TM	Model KERN 2 KERN KFS-TM
Display (segments)	5 + ½ digits	6 digits
EC type approval	yes	yes
Resolution verifiable	6000 e	3000 e
Resolution non verifiable	30000 d	60000 d
Weighing capacities	≤ 2	≤ 2
Weighing units	kg, lb	kg, g
Readability	1, 2, 5, 10, n	1, 2, 5, 10, n
Piece counting with reference	10, 20, 50, 100, 200	n
Display, digit height	Backlit LCD display, 52 mm	Backlit LCD displays, 13/16,5 mm
Additional functions	Totalising, HOLD function, Integrated KERN Communication Protocol (KCP), ideal for connecting an Merchandise Management or ERP system, Compatible with the KERN EasyTouch App	99 item memories, totalising, printing of date and time, Integrated KERN Communication Protocol (KCP), ideal for connecting an Merchandise Management or ERP system, Compatible with the KERN EasyTouch App
Strain gauge load cells	87 – 1600 Ω	87 – 1600 Ω
Linearisation	3 points	4 points
Input voltage	12 V, 500 mA	12 V, 500 mA
Permissible ambient temperature	-10 °C/40 °C	0 °C/40 °C
Interface RS-232	yes	yes
2. Interface RS-232, separate Y cable	CFS-A04	CFS-A04
Interface RS-485	-	-
Interface USB	-	-
Interface Bluetooth	KERN KFB-A03	-
Analogue module	0–10V: KERN KFB-A04 4–20 mA: KERN KFB-A05	-
Signal lamp	CFS-A03	CFS-A03
Foot switch	-	-
Stand	BFS-A07	BFS-A07
Benchtop stand for display device/wall mount	yes/yes	yes/yes
Protective working cover	KFB-A02S05,	KFB-A02S05,
Rechargeable battery pack	KFB-A01,	KFB-A01,
Operating/charging time	up to 35 h/12 h	up to 40 h/12 h
Dimensions Housing W×D×H	250×160×65 mm	260×150×65 mm
Net weight	1,2 kg	1,5 kg

\* not possible in combination with verification. When installing the Bluetooth data interface, the RS-232 data interface can no longer be used

\*\* not possible in combination with signal lamp. When installing the analogue module, the RS-232 data interface can no longer be used



### 3 KERN KIB-TM

Practical Flip/Flop Display device for greatest ease of use

#### Features

- Practical Flip/Flop display device: flexible positioning e.g. free-standing or screwed to the wall (optional). By rotating the upper housing shell you can determine the angle of the display as well as the cable outlet. Factory Option ex works for an additional cost, delivery time + 2 working days, KERN KIB-M01
- Industry 4.0: A large number of (optional) data interfaces enable convenient transferring weighing data to tablets, laptops, PCs, networks, smartphones, printers, etc.
- Searching and remote control of the balance using external control devices or computers with the KERN Communication Protocol (KCP).

### 4 KERN KFN-TM

Stainless steel display device with IP65 protection and superior display size and optional analogue output for controlling systems (PLC) etc.

STANDARD												OPTION		STANDARD											
FACTORY														STANDARD		FACTORY									

\* Note: In addition to the RS-232 data interface, which is integrated as standard, only one other data interface can be installed and operated

Features	Model KERN 3 KIB-TM***	Model KERN 4 KFN-TM
Display (segments)	6 digits	5 + 1/2 digits
EC type approval	yes	yes
Resolution verifiable	6000 e	6000 e
Resolution non verifiable	60000 d	30000 d
Weighing capacities	≤ 2	≤ 2
Weighing units	kg, g	kg
Readability	1, 2, 5, 10, n	1, 2, 5, 10, n
Piece counting with reference	5, 10, 20, 25, 50, 100	10, 20, 50, 100, 200
Display, digit height	Backlit LCD display, 24 mm	Backlit LCD display, 52 mm
Additional functions	Totalising, HOLD function, printing of time. KCP Only possible through RS-232; USB, Bluetooth, WiFi, Digital I/O, LAN on request	Totalising, HOLD function
Strain gauge load cells	87-1100 Ω	87 - 1600 Ω
Linearisation	3 points	3 points
Input voltage	12 V DC, 1000 mA	12 V, 500 mA
Permissible ambient temperature	-10 °C/40 °C	-10 °C/40 °C
Interface RS-232	yes*	KFN-A01
Interface RS-485	-	-
Interface USB	KIB-A03*	-
Interface Bluetooth	KIB-A04	-
WiFi	KIB-A10*	-
SWITCH (DIGITAL I/O)	-	-
LAN	KIB-A02*	-
Alibi memory	KIB-A01	-
Analogue module	-	0-10V: KERN KFB-A04 4-20 mA: KERN KFB-A05
Stand	EOC-A05	BFS-A07
Benchtop stand for display device/wall mount	EOC-A04	yes/yes
Protective working cover	EOC-A01S05	-
Rechargeable battery pack	KFB-A01	GAB-A04
Operating/charging time	up to 43 h/3 h	up to 35 h/12 h
Dimensions Housing W×D×H	268×115×70 mm	266×165×96 mm
Net weight	0,8 kg	2,6 kg

- \* not possible in combination with verification. When installing the Bluetooth data interface, the RS-232 data interface can no longer be used
- \*\* not possible in combination with signal lamp. When installing the analogue module, the RS-232 data interface can no longer be used

! \*\*\* ONLY WHILE STOCKS LAST



- Simplified battery replacement through easily-accessible housing. Particularly advantageous for models with optional verification, as the verification seal remains intact
- With Real Time Clock as standard: Enables you to log the weighing results with accurate time information. Even if the power supply is interrupted, the balance can continue to work with the correct time

**Accessories**

- Stand to elevate display device, height of stand approx. 1040 mm, KERN BFS-A07
- Internal rechargeable battery pack, operating time up to 48 h without backlight, charging time approx. 8 h, KERN YKR-01
- External data interface RS-232, interface cable included, KERN KUP-01
- External data interface USB, interface cable included, KERN KUP-03
- External data interface Ethernet, KERN KUP-04
- External data interface WiFi, interface cable included, KERN KUP-05
- Bluetooth interface adapter, KERN KUP-06
- Analogue module, KERN KUP-08
- \*Extension box for connecting up to three interfaces in parallel, KERN KUP-13
- Memory module (alibi memory), KERN YMM-04
- Signal lamp for visual support of weighing with tolerance range, connection is only possible in combination with KUP-01 (RS 232 interface), KERN CFS-A03

## Display device with up to three interfaces and optional verification

**Features**

- Standardised, convenient KERN concept of operation, consistency across products in terms of design, menu structure, button functions, interface connection and interface protocol
- Industry 4.0: Data and control commands can be exchanged through the KERN Universal Port using one interface, which can be connected to the housing, or through three parallel interfaces using the KUP Extension box
- The following interfaces are available as an option: RS-232, USB, Analogue module, Ethernet, WiFi, Bluetooth

- Each interface can be set up separately, e.g.:
  - Interface 1 (WiFi): Continuous sending to PC for documentation of a process
  - Interface 2 (RS 232): Print stable weight
  - Interface 3 (analogue module): Controlling a device when the target weight is reached
- Available as an option with alibi memory for paperless archiving of weighing results. This also means the results of weighings with mandatory verification can be electronically evaluated and processed further
- Data query and remote control of the balance using a computer or CRM/ERP systems using the KERN Communication Protocol

13

STANDARD	OPTION	FACTORY

**Features**

**Model KERN KFC-TM**

Display (segments)	6
EU type approval	yes
Resolution (verifiable)	3.000 / 2 × 3.000
Resolution (non verifiable)	100 - 999.999
Weighing capacities	single-range / 2 × multi-range / 2 × multi-division
Weighing units	kg, g, lb, ffa, PCS, %   Verifiable: kg, g
Piece counting with reference	5, 10, 20, 50, n
Display, digit height	50 mm
Strain gauge load cells	87 - 1100 Ω
Linearisation (points)	2 / 3 / 5
Input voltage	110 V - 240 V AC
Accu operation time - without backlight	48 h
Accu charging time	8 h
Dimensions Housing W×D×H	220×145×65 mm
Net weight	0,7 kg
Permissible ambient temperature	-10°C/40°C



**Accessories**

- Internal rechargeable battery pack, operating time up to 48 h without backlight, charging time approx. 8 h, KERN YKR-01
- GB mains adapter, cable length 1,5 m, KERN KXS-A06
- Stand to elevate display device, height of stand approx. 1040 mm, KERN BFS-A07
- Internal data interface RS-232, interface cable included, KERN KUM-01
- Internal data interface USB, interface cable included, KERN KUM-03
- Internal data interface Ethernet, interface cable included, KERN KUM-04
- Internal data interface WiFi, KERN KUM-05
- Internal data interface Bluetooth, KERN KUM-06
- Analogue module, KERN KUM-08
- Memory module with real time clock (alibi memory), KERN YMM-06

\*Note: only two wired connections (RS-232, Ethernet, USB or analogue module) and two wireless connections (WiFi or Bluetooth) can be used at the same time

**Stainless steel display device with IP68 dust and spray protection and up to four interfaces**

**Features**

- With dust and spray protection (IP68), which makes it ideal for use in industry and outdoors
- Standardised, convenient KERN concept of operation, consistency across products in terms of design, menu structure, button functions, interface connection and interface protocol
- Industry 4.0: The exchange of data and control commands is optional using up to four interfaces to suit individual requirements: two wired connections (RS 232, Ethernet, USB or analogue module) and two wireless connections (WiFi or Bluetooth)

- Each interface can be set up separately, e.g.:
  - Interface 1 (WiFi): Continuous sending to PC for documentation of a process
  - Interface 2 (RS-232): Print stable weight
  - Interface 3 (analogue module): Controlling a device when the target weight is reached
  - Interface 4 (Bluetooth): Continuous sending to a tablet to monitor a process
- Data query and remote control of the balance using a computer or CRM/ERP systems using the KERN Communication Protocol
- Available as an option with alibi memory for paperless archiving of weighing results. This also means the results of weighings with mandatory verification can be electronically evaluated and processed further

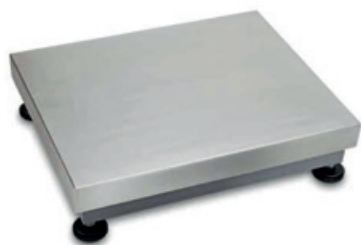
STANDARD	OPTION	FACTORY

**Features**

**Model KERN KXC-TM**

Display (segments)	6
EU type approval	yes
Resolution (verifiable)	3.000 / 2 × 3.000
Resolution (non verifiable)	100 - 999.999
Weighing capacities	single-range / 2 × multi-range / 2 × multi-division
Weighing units	kg, g, lb, ffa, PCS, %
Piece counting with reference	5, 10, 20, 50, n
Display, digit height	48 mm
Strain gauge load cells	87 - 1100 Ω
Linearisation (points)	2 / 3 / 5
Input voltage	110 V - 240 V AC
Accu operation time - without backlight	48 h
Accu charging time	8 h
Dimensions Housing W×D×H	232×150×80 mm
Net weight	2,6 kg
Permissible ambient temperature	-10°C/40°C





### 1 KERN KBP-V20 IP65

#### Platform

##### Features

- Stainless steel-weighing plate, **A** painted steel base
- 1 load cell, aluminium, silicone-coated, IP65, OIML-R60-approved, class III, 3000 e
- Level indicator and levelling feet for precise levelling of the scale, fitted as standard
- Preparation for easy assembly of the ESD earthing kit on the weighing bridge



STANDARD

IP 65 1 DAY 2 DAYS

KPB 600



### 2 KERN KFP-V20 IP65

#### Platform

##### Features

- Stainless steel-weighing plate, **B** painted steel base
- 1 load cell, aluminium, silicone-coated, IP65, OIML-R60-approved, class III, 3000 e
- Level indicator and levelling feet for precise levelling of the scale, fitted as standard



STANDARD

IP 65 1 DAY 2 DAYS

KPB 600



### 3 KERN KXP-V20 IP65

#### Platform

##### Features

- Stainless steel-weighing plate, **C** painted steel base, extremely rigid, wing design
- 1 load cell, aluminium, silicone-coated, IP65, OIML-R60-approved, class III, 3000 e
- Level indicator and levelling feet for precise levelling of the scale, fitted as standard



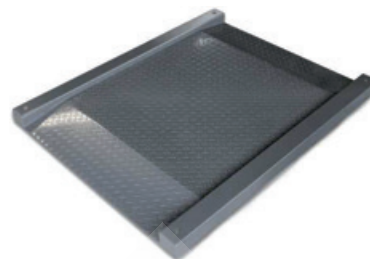
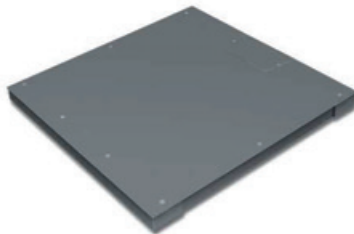
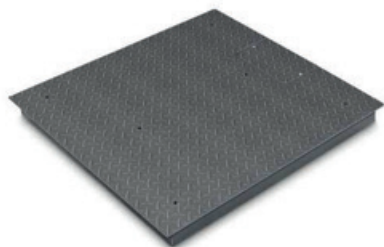
STANDARD

IP 65 1 DAY



Model	Weighing capacity	Readability	Verification value	Minimal load	Cable length	Net weight	Weighing plate
	[Max] kg	[d] g	[e] g	[Min] g	approx. m	approx. kg	W×D×H mm
<b>1 Platform KBP-V20 IP65</b>							
KBP 6V20LM	3   6	0,2	1   2	20   40	2,5	3,8	300×300×110
KBP 15V20M	6   15	0,5	2   5	40   100	2,5	3,8	300×240×110
KBP 15V20LM	6   15	0,5	2   5	40   100	2,5	7	400×300×110
KBP 30V20M	15   30	1	5   10	100   200	2,5	7	400×300×110
KBP 60V20M	30   60	2	10   20	200   400	2,5	7	400×300×110
KBP 60V20LM	30   60	2	10   20	200   400	2,5	10	500×400×120
KBP 150V20M	60   150	5	20   50	400   1000	2,5	10	500×400×120
KBP 150V20LM	60   150	5	20   50	400   1000	2,5	19	650×500×150
KBP 300V20M	150   300	10	50   100	1000   2000	2,5	19	650×500×150
KBP 600V20M	300   600	20	100   200	2000   4000	2,5	42	800×600×200
<b>2 Platform KFP-V20 IP65</b>							
KFP 3V20M	3	0,1	1	20	2,5	3,4	230×230×103
KFP 6V20M	6	0,2	1   2	20   40	2,5	4,4	230×230×103
KFP 6V20LM	6	0,2	1   2	20   40	2,5	3,8	300×240×105
KFP 15V20M	6   15	0,5	2   5	40   100	2,5	3,8	300×240×105
KFP 15V20LM	6   15	0,5	2   5	40   100	2,5	7	400×300×114
KFP 30V20SM	15   30	1	5   10	100   200	2,5	3,8	300×240×105
KFP 30V20M	15   30	1	5   10	20	2,5	7	400×300×114
KFP 30V20LM	15   30	1	5   10	20	2,5	10	500×400×124
KFP 60V20M	30   60	2	10   20	200   400	2,5	7	400×300×114
KFP 60V20LM	30   60	2	10   20	200   400	2,5	10	500×400×124
KFP 150V20M	60   150	5	20   50	400   1000	2,5	10	500×400×124
KFP 150V20LM	60   150	5	20   50	400   1000	2,5	19	650×500×136
KFP 300V20M	150   300	10	50   100	1000   2000	2,5	19	650×500×136
KFP 600V20AM	600	20	200	4000	2,5	42	800×600×189
<b>3 Platform KXP-V20 IP65</b>							
KXP 6V20LM*	3   6	0,2	1   2	20   40	3	3,8	300×240×90
KXP 15V20M*	6   15	0,5	2   5	40   100	3	6	300×240×90
KXP 15V20LM*	6   15	0,5	2   5	40   100	3	8	400×300×90
KXP 30V20M*	15   30	1	5   10	100   200	3	8	400×300×90
KXP 30V20LM*	15   30	1	5   10	100   200	3	22	500×400×125
KXP 60V20M*	30   60	2	10   20	200   400	3	11	400×300×90
KXP 60V20LM*	30   60	2	10   20	200   400	3	17	500×400×125
KXP 150V20M*	60   150	5	20   50	400   1000	3	18	500×400×125
KXP 150V20LM*	60   150	5	20   50	400   1000	3	34	650×500×135
KXP 300V20M*	150   300	10	50   100	1000   2000	3	34	650×500×135

\* ONLY WHILE STOCKS LAST!



#### 4 KERN KIP-V20M

##### Weighing Bridge

###### Features

- Weighing bridge with non-slip chequer plate, lacquered, welded
- 4 Load cells, steel, silicone-coated, IP67, OIML-R60-approval for verification, class III, 3000 e
- Can be built in using pit frames (optional)
- Level indicator and levelling feet for precise levelling of the scale
- Easy access to the junction box from the top
- Comfortable levelling of the weighing bridge from the top

#### 5 KERN KFP-V20 IP67

##### Weighing Bridge

###### Features

- Weighing plate screwed on from the top (models with [Max] ≤ 1500 kg), so it easy to remove, hygienic and easy to clean.
- Lacquered steel weighing bridge, weighing plate size 1500×1500×130 mm corrugated steel plate. Extremely resistant to bending due to material thickness
- 4 Load cells, steel, silicone-coated, IP67, OIML-R60-approval for verification, class III, 3000 e
- Can be built in using pit frames (optional)
- Level indicator and levelling feet for precise levelling of the scale
- Easy access to the junction box from the top
- Comfortable levelling of the weighing bridge from the top

#### 6 KERN KFD-V20

##### Weighing Bridge

###### Features

- Weighing bridge made of non-slip corrugated steel plate, lacquered, two access ramps integrated, extremely resistant to bending
- Extremely flat construction to facilitate access: access height only 45 mm
- 4 Load cells, alloy steel, silicone-coated, IP67, OIML-R60-approved class III, 3000 e



STANDARD FACTORY

IP 67 2 DAYS M

STANDARD FACTORY

IP 67 2 DAYS M

STANDARD FACTORY

IP 67 2 DAYS M

Model	Weighing range [Max] kg	Readability [d] g	Verification value [e] g	Min. load [Min] g	Cable length approx. m	Net weight approx. kg	Weighing plate W×D×H mm
<b>KERN</b>							
<b>4 Weighing bridge KIP-V20M</b>							
KIP 1500V20SM	1500	500	500	10000	5	130	1000×1000×108
KIP 1500V20EM	1500	500	500	10000	5	140	1200×1000×108
KIP 1500V20M	1500	500	500	10000	5	150	1500×1200×108
KIP 3000V20M	3000	1000	1000	20000	5	150	1500×1200×108
KIP 3000V20LM	3000	1000	1000	20000	5	180	1500×1500×108
<b>5 Weighing bridge KFP-V20 IP67</b>							
KFP 1500V20SNM <sup>NEW</sup>	1500	500	500	10000	5	100	1000×1000×85
KFP 1500V20NM	1500	500	500	10000	5	135	1500×1250×90
KFP 3000V20NM	3000	1000	1000	20000	5	135	1500×1250×90
KFP 3000V20LNM	3000	1000	1000	20000	5	155	1500×1500×80
<b>6 Weighing bridge KFD-V20</b>							
KFD 600V20M*	600	200	200	4000	5	125	1600×1200×78
KFD 600V20LM*	600	200	200	4000	5	155	1800×1400×80
KFD 1500V20M*	1500	500	500	10000	5	125	1600×1200×78
KFD 1500V20LM*	1500	500	500	10000	5	175	1800×1400×78

<sup>1</sup> \* ONLY WHILE STOCKS LAST! <sup>NEW</sup> New model



## 7 KERN KFA-V20

### Weighing Beams

#### Features

- Weighing beams and painted steel base
- 4 load cells, alloy steel, silicone-coated, IP67
- Levelling feet for precise levelling of the weighing beams
- Connection cable, length 5 m
- **D** Image below: Version up to 6 t available. Each weighing beam has a roller and handle for easy transport of the scale (KERN KFA-L)
- **Special feature:** model with short weighing beams, ideal for weighing compact items or animals in transport boxes
  - ▶ KERN KFA-600V20S
- Accessories see KERN UFA



STANDARD



## 8 KERN KFU-V20/V30

### U-Weighing Bridge

#### Features

- Load range: painted steel (V20), stainless steel (V30) height 90 mm
- 4 load cells, alloy steel, silicone-coated, IP67, OIML-R60-approval for verification, class III, 3000 e
- 2 rollers and handle for easy transport of the scale

STANDARD



FACTORY



## 9 KERN KFP-V30

### Platform

#### Features

- Stainless steel-weighing plate, **E** stainless steel substruction
- 1 load cell, stainless steel, silicone-coated, IP67, OIML-approved, class III, 3000 e
- Level indicator and levelling feet for precise levelling of the scale



STANDARD



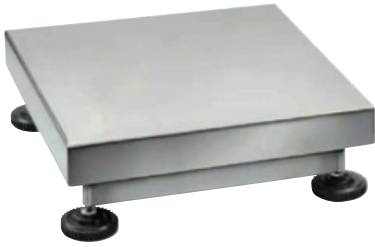
FACTORY



13

Model	Weighing range [Max] kg	Readability [d] g	Verification value [e] g	Min. load [Min] g	Cable length approx. m	Net weight approx. kg	Weighing plate W×D×H mm
<b>7 Weighing beams KFA-V20</b>							
KFA 600V20S*	600	200	-	-	5	30	800×120×100
KFA 1500V20*	1500	500	-	-	5	36	1200×120×100
KFA 3000V20*	3000	1000	-	-	5	36	1200×120×100
KFA 3000V20L*	3000	1000	-	-	5	65	2000×120×100
KFA 6000V20*	6000	2000	-	-	5	85	1200×160×80
KFA 6000V20L*	6000	2000	-	-	5	125	2100×160×85
<b>8 U-Weighing bridge KFU-V20</b>							
KFU 600V20M	600	200	200	4000	5	55	840×1350×90
KFU 1500V20M	1500	500	500	10000	5	55	840×1350×90
<b>8 Stainless steel U-Weighing bridge KFU-V30</b>							
KFU 1500V30M*	1500	500	500	10000	5	55	840×1350×90
<b>9 Stainless steel platform KFP-V30</b>							
KFP 15V30M	15	1	5	100	2,5	5,0	300×240×100
KFP 30V30M	30	1	10	200	2,5	10	400×300×128
KFP 30V30SM	30	2	10	200	2,5	5,0	300×240×100
KFP 60V30M	60	2	20	400	2,5	10	400×300×128
KFP 60V30LM	60	5	20	400	2,5	10	500×400×137
KFP 60V30XLM	60	5	20	400	2,5	22	650×500×142
KFP 150V30SM	150	10	50	1000	2,5	10	400×300×128
KFP 150V30M	150	10	50	1000	2,5	10	500×400×137
KFP 150V30LM	150	10	50	1000	2,5	22	650×500×135
KFP 300V30M	300	20	100	2000	2,5	22	650×500×135

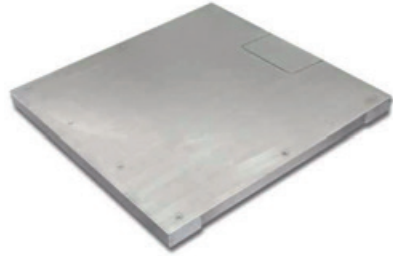
**I** \* ONLY WHILE STOCKS LAST!



**10 KERN KFP-V40 IP68**  
**Stainless steel platform**

**Features**

- Platform: entirely out of stainless steel
- 1 load cell, stainless steel, encapsulated, IP68, OIML R60 approval for verification, class III, 3000 e
- Level indicator and levelling feet for accurate levelling of the balance



**11 KERN KFP-V40 IP68**  
**Stainless steel weighing bridge**

**Características**

- Weighing bridge entirely made of stainless steel, extremely resistant to bending because of its high material thickness
- **G** Weighing plate fixed with stainless steel screws, for easier access to the loadcells from above
- 4 Load cells, stainless steel, encapsulated, IP68, OIML R60 approval for verification, Class III, 3000 e
- Can be built in using pit frames (optional)
- Level indicator and levelling feet for accurate levelling of the balance
- Comfortable levelling of the weighing bridge from the top



**12 KERN KFD-V40 IP68**  
**Stainless steel weighing bridge**

**Características**

- Weighing bridge made from stainless steel, two integrated access ramps, extremely resistant to bending
- Extremely flat construction to facilitate access: access height only 45 mm
- 4 Load cells, stainless steel, encapsulated, IP68, OIML R60 approval for verification, Class III, 3000 e
- Level indicator and levelling feet for accurate levelling of the balance



STANDARD

FACTORY

STANDARD

FACTORY

STANDARD

FACTORY

Model	Weighing capacity	Readability	Verification value	Minimal load	Cable length	Net weight	Weighing plate
	[Max] kg	[d] g	[e] g	[Min] g	approx. m	approx. kg	W×D×H mm
<b>10 Stainless steel platform KFP-V40 IP68</b>							
KFP 6V40M	6	0,5	1   2	20	3	5,0	300×240×104
KFP 15V40M	15	1	2   5	40	3	5,0	300×240×104
KFP 15V40LM	15	1	2   5	40	3	5,0	400×300×107
KFP 30V40M	30	2	5   10	100	3	8	400×300×107
KFP 30V40LM	30	2	5   10	100	3	8	500×400×107
KFP 60V40M	60	5	10   20	200	3	8	400×300×120
KFP 60V40LM	60	5	10   20	200	3	10	500×400×124
KFP 150V40M	150	10	20   50	400	3	10	500×400×124
KFP 150V40LM	150	10	20   50	400	3	22	650×500×136
KFP 300V40M	300	20	50   100	1000   2000	3	22	650×500×136
<b>11 Stainless steel weighing bridge KFP-V40 IP68</b>							
KFP 3000V40M	3000	1000	1000	20000	5	135	1500×1250×80
<b>12 Stainless steel weighing bridge KFD-V40 IP68</b>							
KFD 600V40M*	600	200	200	4000	5	130	1600×1200×78
KFD 1500V40M*	1500	500	500	10000	5	130	1600×1220×95

**1** \* ONLY WHILE STOCKS LAST!