

# LOAD CELLS

Accuracy classes with nominal loads from 300 g to 100 t and protection classes up to IP69K as well as cells protected according to ATEX or OIML approved cells are available to you from now in the SAUTER product range. Whatever the project – whether it's the development of customised weighing systems, installation in silos and storage tanks or in shelving for continuous inventory, for special application in mechanical engineering or in any type of test bench – SAUTER can offer you just the right load cell.

Of course, we can also supply you with the appropriate accessories such as load corners, pivot heads, display devices, junction boxes or the relevant calibration certificate at the same time.

Any special requests? Do you need special load cells, other capacities or cable lengths, individual force test benches or a special mount for your test item?

No problem, our product specialist for force-load cells Mr Stefan Herrmann is available at any time to help you further and will work with you to develop a customised concept for your application.



Everything about load cells in the SAUTER catalogue 2026

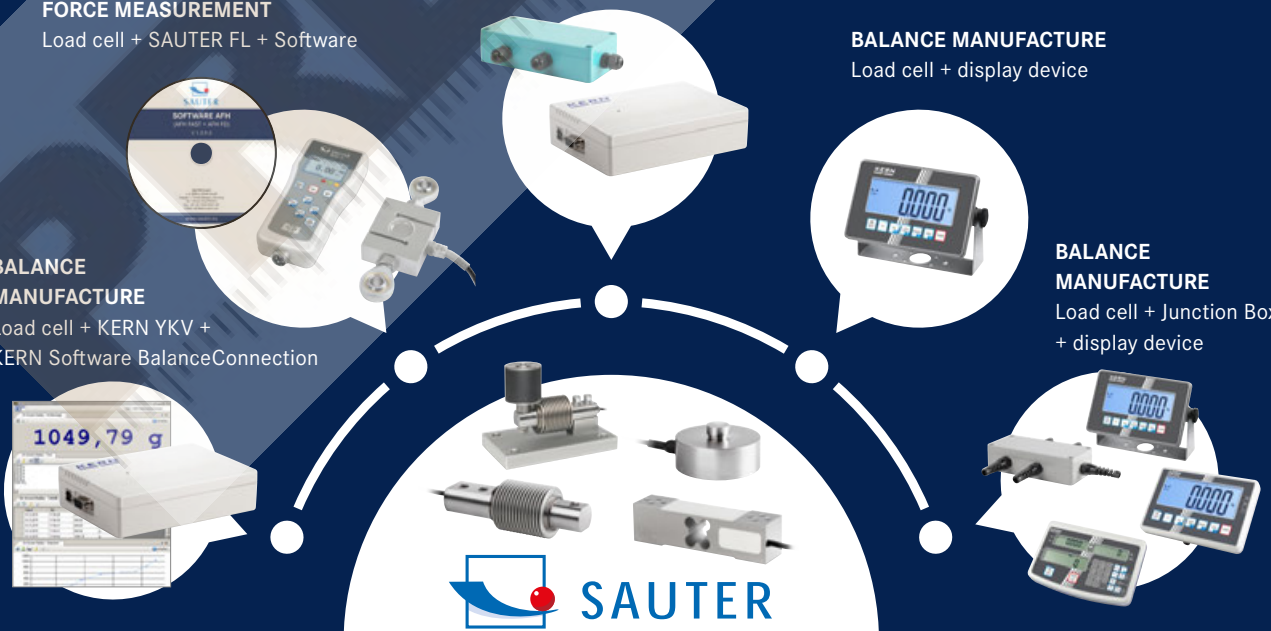
**BALANCE MANUFACTURE**  
Load cell + Junction Box + KERN YKV

**FORCE MEASUREMENT**  
Load cell + SAUTER FL + Software

**BALANCE MANUFACTURE**  
Load cell + display device

**BALANCE MANUFACTURE**  
Load cell + KERN YKV + KERN Software BalanceConnection

**BALANCE MANUFACTURE**  
Load cell + Junction Box + display device



**SAUTER load cells – integration opportunities**



**CP P4 · CP Y4**  
Single-point load cell made of anodised aluminium

**Technical data**

- CP P4: Accuracy in accordance with OIML R60 C3
- CP Y4: Accuracy in accordance with OIML R60 C2
- CE and RoHS compliant
- Protection against dust and water splashes IP65 (in accordance with EN 60529)
- Aluminium, anodised
- Suitable for price-computing scales, bench scales, platform scales, etc.
- Maximum platform size: 200×200 mm
- Nominal sensitivity: 0,9 mV/V
- 4-wire connection
- Cable length approx. 0,4 m

**CP P1 · CP Y1**  
Single-point load cell made of anodised aluminium

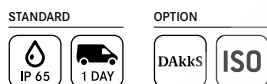
**Technical data**

- CP P1: Accuracy in accordance with OIML R60 C3
- CP Y1: Accuracy in accordance with OIML R60 C2
- CE and RoHS compliant
- Protection against dust and water splashes IP65 (in accordance with EN 60529)
- Aluminium, anodised
- Suitable for price-computing scales, bench scales, platform scales, etc.
- Maximum platform size: 250×350 mm
- Nominal sensitivity: 2 mV/V
- 4-wire connection
- Note: Version in accordance with OIML R60 C4 or C5 on request

**CP P3**  
Single-point load cell made of anodised aluminium

**Technical data**

- Accuracy in accordance with OIML R60 C3
- CE and RoHS compliant
- Protection against dust and water splashes IP65 (in accordance with EN 60529)
- Aluminium, anodised
- Suitable for price-computing scales, bench scales, platform scales, etc.
- Maximum platform size: 350×400 mm
- Nominal sensitivity: 2 mV/V
- 4-wire connection
- Cable length approx. 3 m
- Note: Version in accordance with OIML R60 C4 or C5 on request



Model	Nominal load
<b>SAUTER</b>	kg
CP 300-0P4	0,3
CP 600-0P4	0,6
<b>ECO design</b>	
CP 300-0Y4	0,3
CP 1500-0Y4	1,5
CP 3000-0Y4	3

Model	Nominal load	Cable length
<b>SAUTER</b>	kg	m
CP 3-3P1	3	0,4
CP 3-2-3P1	3	2
CP 5-3P1	5	0,4
CP 6-3P1	6	0,4
CP 8-3P1	8	0,4
CP 10-3P1	10	0,4
CP 10-3-3P1	10	3
CP 15-3P1	15	0,4
CP 15-3-3P1	15	3
CP 20-3P1	20	0,4
CP 30-3P1	30	0,4
CP 35-3P1	35	0,4
CP 35-3-3P1	35	3
CP 40-3P1	40	0,4
CP 50-3P1	50	0,4
CP 50-2-3P1	50	2
<b>ECO design (without EC type approval)</b>		
CP 3-2Y1	3	0,45
CP 5-2Y1	5	0,45
CP 10-2Y1	10	0,45
CP 15-2Y1	15	0,45
CP 20-2Y1	20	0,45
CP 30-2Y1	30	0,45
CP 100-3-3Y1	100	3

Model	Nominal load
<b>SAUTER</b>	kg
CP 30-3P3	30
CP 40-3P3	40
CP 50-3P3	50
CP 75-3P3	75
CP 100-3P3	100

Discover more details and matching accessories online!



### CP P2 Single-point load cell made of aluminium

#### Technical data

- Accuracy in accordance with OIML R60 C3
- RoHS compliant
- Protection against dust and water splashes IP65 (in accordance with EN 60529)
- Aluminium alloy, anodized
- Suitable for price computing scales, bench scales etc.
- Maximum platform size  
100 – 300 kg: 400×400 mm  
400 – 500 kg: 450×450 mm
- 4-wire connection
- Nominal sensitivity: 2 mV/V
- Cable length: 2 m
- Note: Version in accordance with OIML R60 C4 or C5 on request

### CP P7 Single-Point load cell made of stainless steel

#### Technical data

- Accuracy in accordance with OIML R60 C3
- RoHS compliant
- Protection against dust and water splashes IP67 (in accordance with EN 60529)
- Stainless steel
- Area of application: Mass as well as compressive force measurement in harsh environmental conditions
- Suitable for price computing scales, bench scales etc.
- Maximum platform size: 400×400 mm
- 6-wire connection
- Nominal sensitivity: 2 mV/V
- Cable length: 1 m
- Note: Version in accordance with OIML R60 C4 or C5 on request

### CP P8 Single-point load cell made of aluminium

#### Technical data

- Accuracy in accordance with OIML R60 C3
- RoHS compliant
- Protection against dust and water splashes IP65 (in accordance with EN 60529)
- Aluminium alloy, anodized
- Suitable for price computing scales, bench scales etc.
- Maximum platform size 600×600 mm
- 6-wire connection
- Nominal sensitivity: 2 mV/V
- Cable length: 3 m
- Note: Version in accordance with OIML R60 C4 or C5 on request

13





Discover more details and matching accessories online!

STANDARD      OPTION






STANDARD      OPTION

STANDARD      OPTION






Model      Nominal load

SAUTER	kg
CP 100-3P2	100
CP 150-3P2	150
CP 200-3P2	200
CP 300-3P2	300
CP 400-3P2	400
CP 500-3P2	500

Model      Nominal load

SAUTER	kg
CP 30-3P7	30
CP 50-3P7	50
CP 75-3P7	75
CP 100-3P7	100
CP 150-3P7	150

Model      Nominal load

SAUTER	kg
CP 50-3P8	50
CP 100-3P8	100
CP 150-3P8	150
CP 200-3P8	200
CP 250-3P8	250
CP 300-3P8	300
CP 500-3P8	500
CP 600-3P8	600



**CR Q1**  
Loadcell made of stainless steel

**Technical data**

- Accuracy in accordance with OIML R60 C1
- RoHS compliant
- Protection against dust and water splashes IP68 (in accordance with EN 60529), hermetically encapsulated
- Stainless steel
- Area of application: Measuring mass as well as compressive force
- Suitable for vehicle scales, weigh hoppers, vehicle testing equipment, test stands
- Nominal sensitivity: 2 mV/V
- Cable length 10 m



**CR P1**  
Loadcell made of stainless steel

**Technical data**

- Accuracy in accordance with OIML R60 C3
- RoHS compliant
- Protection against dust and water splashes IP68 (in accordance with EN 60529), hermetically encapsulated
- Stainless steel
- Area of application: Measuring mass as well as compressive force
- Suitable for weighbridges, handing scales, silo scales and other types of balances, test stands, etc.
- Nominal sensitivity: 1 – 2 mV/V, depending on nominal load
- Cable length  
[Max] ≤ 1000 kg: 3 m  
[Max] ≥ 2000 kg: 6 m



**CR Y1**  
Loadcell made of steel alloy

**Technical data**

- Accuracy in accordance with OIML R60 C1
- RoHS compliant
- High precision (comprehensive Error 0,05% F.S.)
- Protection against dust and water splashes IP68 (in accordance with EN 60529), hermetically encapsulated
- Alloy steel
- Area of application: for weight, tensile and compressive force measurement
- Suitable for weight measurement as well as force and force test stands
- Force transmission via pressure piece or threaded hole
- Nominal sensitivity: 2 mV/V
- Cable length: 3 m
- Pressure piece included with delivery
- Thread for pressure piece or other force application: up to 5000 kg M16×1,5, from 10000 kg M32×1,5

Discover more details and matching accessories online!

STANDARD      OPTION

IP 68    1 DAY    ISO

[Max] 25 t / 250 kN

Model      Nominal load

**SAUTER**

CR 2500-1Q1	2,5 t/25 kN
CR 5000-1Q1	5 t/50 kN
CR 10000-1Q1	10 t/100 kN
CR 20000-1Q1	20 t/200 kN
CR 30000-1Q1	30 t/300 kN

STANDARD      OPTION

IP 68    4 DAYS    DAKKS    ISO

[Max] ≤ 500 kg / 5 kN

Model      Nominal load

**SAUTER**

CR 60-3P1*	60 kg/0,6 kN
CR 130-3P1*	130 kg/1,3 kN
CR 250-3P1*	250 kg/2,5 kN
CR 500-3P1*	500 kg/5 kN
CR 2000-3P1*	2000 kg/20 kN

\* ONLY WHILE STOCKS LAST

STANDARD      OPTION

IP 68    1 DAY    DAKKS    ISO

[Max] ≤ 0,5 t / 5 kN

Model      Nominal load

**SAUTER**

CR 500-1Y1	0,5 t/5 kN
CR 1000-1Y1	1 t/10 kN
CR 5000-1Y1	5 t/50 kN
CR 10000-1Y1	10 t/100 kN
CR 20000-1Y1	20 t/200 kN



**CB Q1 · CB Q2**  
**Bending beam and shear beam load cell made of stainless steel**

**Technical data**

- Accuracy in accordance with OIML R60 C3
- CE and RoHS compliant
- Protection against dust and water splashes IP68/IP69K (in accordance with EN 60529), welded to create a hermetic seal
- Stainless steel
- Area of application: Measuring mass as well as compressive force in harsh environments
- Suitable for platform scales, weigh hoppers, floor scales and other weighing devices
- 4-wire connection
- Nominal sensitivity: 2 mV/V
- Cable length: 3 m
- Note: Accuracy class OIML R60 C6 or EX version on request

**CB P1**  
**Bending beam made of nickel-plated steel**

**Technical data**

- Accuracy in accordance with OIML R60 C3
- CE and RoHS compliant
- Protection against dust and water splashes IP67 (in accordance with EN 60529), hermetically encapsulated
- Nickel-plated steel
- Area of application: Measuring mass as well as compressive force in harsh environments
- Suitable for platform scales, silo scales, bed scales and other types of scales
- 4-wire connection
- Nominal sensitivity: 3 mV/V
- Cable length: 3 m

13

STANDARD: IP 68, IP 69K, 1 DAY  
 OPTION: DAkkS, ISO  
[Max] ≤ 500 kg

STANDARD: IP 67, 1 DAY, M  
 OPTION: DAkkS, ISO

Model	Nominal load
<b>SAUTER</b>	kg
<b>CB 5-3Q1</b>	5
<b>CB 10-3Q1</b>	10
<b>CB 20-3Q1</b>	20
<b>CB 30-3Q1</b>	30
<b>CB 50-3Q1</b>	50
<b>CB 75-3Q1</b>	75
<b>CB 100-3Q1</b>	100
<b>CB 150-3Q1</b>	150
<b>CB 200-3Q1</b>	200
<b>CB 250-3Q1</b>	250
<b>CB 300-3Q1</b>	300
<b>CB 500-3Q1</b>	500
<b>CB 750-3Q2*</b>	750
<b>CB 1000-3Q2*</b>	1000
<b>CB 1500-3Q2*</b>	1500

Model	Nominal load
<b>SAUTER</b>	kg
<b>CB 100-3P1</b>	100
<b>CB 250-3P1</b>	250

! \* ONLY WHILE STOCKS LAST

Discover more details and matching accessories online!



### CT Q1 Shear beam made of stainless steel

#### Technical data

- Accuracy in accordance with OIML R60 C3
- CE and RoHS compliant
- Protection against dust and water splashes IP68/IP69K (in accordance with EN 60529), welded to create a hermetic seal
- Stainless steel
- Area of application: Measuring mass as well as compressive force in harsh environments
- Suitable for platform scales, weigh hoppers, flush-mounted floor scales and other weighing devices
- 6-wire connection
- Nominal sensitivity: 2 mV/V
- Cable length: 5 m
- Note: EX version on request

### CT P1 · CT P2 Shear beam made of nickel-plated steel

#### Technical data

- Accuracy in accordance with OIML R60 C3
- CE and RoHS compliant
- Protection against dust and water splashes IP67 (in accordance with EN 60529), welded to create a hermetic seal
- Nickel-plated steel
- Area of application: Measuring mass as well as compressive force in harsh environments
- Suitable for platform scales, weigh hoppers, flush-mounted floor scales and other weighing devices
- 4-wire connection
- Nominal sensitivity: 3 mV/V
- Cable length  
[Max] ≤ 1000 kg: 4 m  
[Max] ≥ 1500 kg: 6 m
- CT P2: Delivery with calibrated sensitivity, when ordering several cells

STANDARD: IP 68, IP 69K, 1 DAY

OPTION: DAkkS, ISO

[Max] ≤ 500 kg

STANDARD: IP 67, 1 DAY, M

OPTION: DAkkS, ISO

[Max] ≤ 500 kg

Model	Nominal load
<b>SAUTER</b>	kg
CT 300-3Q1	300
CT 500-3Q1	500
CT 750-3Q1	750
CT 1000-3Q1	1000
CT 1500-3Q1	1500
CT 2000-3Q1	2000
CT 3000-3Q1	3000
CT 5000-3Q1	5000
CT 7500-3Q1	7500
CT 10000-3Q1	10000

Model	Nominal load
<b>SAUTER</b>	kg
CT 500-3P1	500
CT 1000-3P1	1000
CT 1500-3P1	1500
CT 2500-3P1	2500
CT 3000-3P1	3000
CT 5000-3P1	5000
CT 10000-3P1	10000
CT 500-3P2	500
CT 1000-3P2	1000
CT 5000-3P2	5000
CT 3000-3P2	3000
CT 10000-3P2	10000

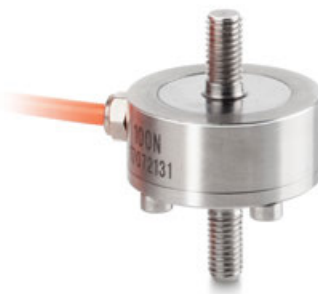
Discover more details and matching accessories online!



**CO Y1**  
**Miniature cylindrical load cell**  
**made of stainless steel**

**Technical data**

- Accuracy in accordance with OIML G5
- High precision (comprehensive Error 0,5% F.S.)
- RoHS compliant
- Protection against dust and water splashes IP65
- Area of application: Compressive applications
- Suitable for weight measurement as well as force and force test stands
- Nominal sensitivity: 1,0 – 1,5 mV/V, depending on nominal load
- Cable length: 2 m



**CO Y2**  
**Miniature cylindrical load cell**  
**made of stainless steel**

**Technical data**

- Accuracy in accordance with OIML G5
- High level of accuracy (Comprehensive error 0,5% F. S.)
- RoHS compliant
- Protection against dust and water splashes IP65
- Area of application: Tensile and compressive applications
- Suitable for weight measurement as well as force and force test stands
- Nominal sensitivity: 1,5 – 2 mV/V, depending on nominal load
- Cable length: 2 m



**CO Y5**  
**Tension and compression force**  
**measuring cell made of stainless steel**

**Technical data**

- Accuracy in accordance with OIML R60 G1
- CE and RoHS compliant
- Protection against dust and water splashes IP66 (in accordance with EN 60529)
- Stainless steel
- Very low design
- Suitable for test stands, force gauges, automation systems, etc.
- 4-wire connection
- Nominal sensitivity:  
 CO 0.5-Y5, CO 1-Y5: 1 mV/V  
 CO 5-Y5, CO 10-Y5: 2 mV/V
- Cable length: 2 m

**13** Discover more details and matching accessories online!

STANDARD      OPTION

[Max] ≤ 500 kg / 5 kN

**Model**      Nominal load

**SAUTER**

CO 10-Y1	10 kg / 100 N
CO 20-Y1	20 kg / 200 N
CO 50-Y1	50 kg / 500 N
CO 100-Y1	100 kg / 1 kN
CO 200-Y1	200 kg / 2 kN
CO 500-Y1	500 kg / 5 kN
CO 1000-Y1	1000 kg / 10 kN
CO 2000-Y1	2000 kg / 20 kN

STANDARD      OPTION

[Max] ≤ 500 kg / 5 kN

**Model**      Nominal load

**SAUTER**

CO 10-Y2	10 kg / 100 N
CO 20-Y2	20 kg / 200 N
CO 50-Y2	50 kg / 500 N
CO 100-Y2	100 kg / 1 kN
CO 200-Y2	200 kg / 2 kN
CO 500-Y2	500 kg / 5 kN
CO 1000-Y2	1000 kg / 10 kN
CO 2000-Y2	2000 kg / 20 kN

STANDARD      OPTION

[Max] ≥ 1 kg / 10 N

**Model**      Nominal load

**SAUTER**

CO 0.5-Y5	500 g / 5 N
CO 1-Y5	1 kg / 10 N
CO 5-Y5	5 kg / 50 N
CO 10-Y5	10 kg / 100 N



CJ P4



CJ P4PG



CJ X467



CJ X468

**CJ P**  
**Junction box for the connection of several measuring cells to an evaluation unit**

**Features**

- Prepared for 4-wire and 6-wire measuring cells
- The robust aluminium diecast housing
- Protection against dust and water splashes

**CJ X**  
**Junction box for the connection of several measuring cells to an evaluation unit**

**Features**

- Prepared for 4-wire and 6-wire measuring cells

**CJ X467**

- Robust housing made of stainless steel with IP67 dust and spray protection

**CJ X468**

- The robust aluminium diecast housing, protection against dust and water splashes IP68

Discover more details and matching accessories online!

STANDARD



**Model**                      Number of connection options

<b>SAUTER</b>	
CJ P4PG	4
CJ P4	4

STANDARD



CJ X467    CJ X468

**Model**                      Number of connection options

<b>SAUTER</b>	
CJ X468	4
CJ X467	4