



## DISPLAY DEVICES, PLATFORMS, WEIGHING BRIDGES

### Customized individual weighing systems, without verification

KERN offers a range of KERN display devices and KERN weighing units, such as platform scales, floor scales, pallet scales and drive-through scales, which you can customize to make your ideal scale. You choose the components, KERN handles the rest.

### Assembly

KERN delivers the complete scale which is ready to use. Prices for assembly can be found in the "Assembly" price table. On request we can also create a calibration certificate in accordance with DAkkS at an additional price, see *Accredited Calibration Service*.

### Customizing individual weighing systems which can be verified or are verified

In order to provide the complete package, as well as assembling your individual weighing system, KERN will also carry out the manufacturer's initial verification/evaluation for conformity in accordance with EC directives as a commercial scales of verification class III.

In accordance with the European verification regulations, when assembling a display device with a weighing unit you must take the following notes into account:

- Only elements which can be verified with type approval or OIML test certificate can be combined into a weighing system which can be verified. Possible models are marked with "M".
- Platforms with load cells, provided as third-party products which have an OIML test certificate can be included.
- It will not be possible to carry out verification at a later date, e.g. after assembly and delivery of the weighing system. So please order the verification at the same time as you order the weighing system.

You will find a wide variety of display devices, platforms, weighing bridges, etc. in KERN's product range and these can be put together to create your ideal scale. You simply choose the components, KERN handles the rest.



# NOTHING IS IMPOSSIBLE – KERN CUSOS

Perfectly working weighing solutions with customized platform sizes, specific software solutions and coordinated peripherals – to suit your processes.

Our KERN Customized Solution Service offers maximum freedom of choice – give it a try.



Zoologischer Garten Schwerin/Sven P. Peter

## 13 KERN CUSOS – Perfectly tailored to you and your requirements

Powerful balances and efficient weighing systems which support you in your work, should be adapted to your individual requirements. Standard models are therefore not sufficient under some circumstances.

For this reason, at KERN it is our pleasure to work with you to develop a solution which is appropriate and tailor-made for you. From a range of platform sizes through to personalised weighing systems within large production plants, we can provide the right measuring technology.

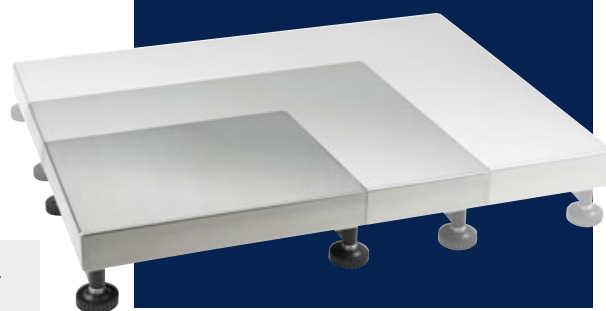
Through close collaboration with your engineers and users, we first check the special requirements for your application. Using this data we will put together the appropriate platform scale, floor scale or a completely personalised weighing system for you, to fit your requirements perfectly.

**Tip:** Save money and ask our experts. Maybe your desired combination is already included in our standard range?



**CUSTOMIZED**  
SOLUTION SERVICE

For details scan QR Code:





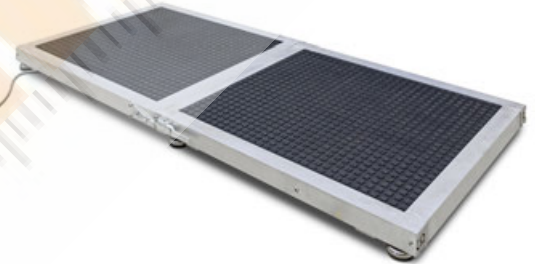
For perfect integration into existing and newly configured processes: individual platform construction in individual formats



Ideal for customised requirements



From horses to rhinos – weighing large animals is child's play with our tailor-made solutions



## Your advantage – you have the choice

Choose from a wide range of display devices. Economical and lightweight (plastic version), robust and water-resistant (stainless steel version), with numeric key pad, battery or mains operation or the most varied interfaces.

Load cells to construct automatic weighing systems such as filling or dosing systems, such as might be used, for example, in manufacturing or filling processes in the chemical industry, construction industry, mineral industry, etc.

On many occasions, load cells are also used in the construction of checkweighers or for installation into packaging machines of any type in the food industry.

The weighing data can be forwarded to peripheral devices such as signal lamps, printers and laptops or be used to switch valves, or similar devices.

## What's your individual requirement?

Just tell us the size you want and the material you want for your platform and other essential construction details – done! We'll take care of the implementation.

Following you will find a selection of our platforms, load cells and evaluation devices – the starting point for your individual system solution!

## The individual KERN steps

### 1. Proof of compatibility

This is mandatory by law and includes testing by using type approvals, whether the connection values of the display device match the connection data of the weighing unit.

#### Weighing capacity

#### Model

0 up ... kg	<b>KERN</b>
all Weighing capacities	<b>965-240</b>

### 2. Assembly

After testing for suitability using the proof of compatibility, the weighing system will be hard wired by KERN. The weighing system will then be tested in accordance with regulations of 2014/31/EU, the European directive for non-automatic weighing instruments and prepared for conformity assessment.

up ≤ 50 kg	<b>965-411</b>
up ≤ 350 kg	<b>965-412</b>
up ≤ 1500 kg	<b>965-413</b>
up ≤ 2900 kg	<b>965-414</b>
up ≤ 6000 kg	<b>965-415</b>

### 3. Initial verification by the manufacturer

#### Conformity assessment ("Initial verification by the manufacturer")

KERN is authorised to carry out the conformity assessment ("initial verification by the manufacturer") in accordance with 2014/31/EU, the European directive for non-automatic weighing instruments and is therefore authorised to introduce the weighing system onto the market, after the test has been carried out successfully and the conformity mark has been affixed.

up ≤ 5 kg	<b>965-227</b>
up ≤ 50 kg	<b>965-228</b>
up ≤ 350 kg	<b>965-229</b>
up ≤ 1500 kg	<b>965-230</b>
up ≤ 2900 kg	<b>965-231</b>
up ≤ 6000 kg	<b>965-232</b>

### 4. Declaration of conformity

KERN issues this after the initial verification by the manufacturer. Conformity assessment has been carried out successfully and sends it with the weighing system at no additional cost, and it can be used in areas regulated by law.

## Modifications and special services

Description	Model
	<b>KERN</b>
<b>Cable extensions for platform scales</b>	
up to 4 m extension	<b>965-403</b>
up to 7 m extension	<b>965-404</b>
up to 20 m extension	<b>965-405</b>
<b>Individual settings</b>	
Scale with NAWI conformity evaluation, only in combination with KERN 965-240	<b>965-401</b>
Other adjustments in the balance or software changes	<b>965-407</b>

**I** Delivery time for modifications & special services approx. 5-8 working days

## Order example

**KFP 30V20M** platform and **KEN-TM** display device with cable extension (4 m) and setting an individual preload.

#### Model

#### KERN

KERN platform	<b>KFP 30V20M</b>
KERN display device	<b>KXC-TM</b>
Proof of compatibility	<b>965-240</b>
Cable extension	<b>965-403</b>
Setting the preload	<b>965-401</b>
Assembly	<b>965-411</b>
Verification at the factory KERN	<b>965-228</b>

**Complete scale** (verified)



### 1 KERN KFS-TM

Professional indicator with 3 displays, verification optional

#### Features

- 99 item memories
- Totalising
- Printout with date and time
- Integrated KERN Communication Protocol (KCP), ideal for connecting an Merchandise Management or ERP system
- Compatible with KERN EasyTouch App
- Benchtop stand for display device incl.
- Wall mount for display device, standard

Discover more details and matching accessories online!

#### STANDARD



#### OPTION FACTORY



#### KERN 1 KFS-TM

Display (segments)	6 digits
EU type approval	Yes
Resolution verifiable (e)	3.000
Terminal resolution (not verifiable)	60.000
Weighing capacities	2
Weighing units	kg, g
Digit increments	1, 2, 5, 10, n
Piece counting with reference	n
Display, digit height	LCD, 16,5 mm
Display backlight	yes
Strain gauge load cells	87 - 1200 Ω
Linearisation (points)	4
Input voltage	12 V, 500 mA
Permissible ambient temperature	0 °C - 40 °C
Dimensions housing W×D×H	250×160×65 mm
Net weight	1,00 kg



### 2 KERN KFN-TM

Stainless steel display device with IP65 protection and superior display size and optional analogue output for controlling systems (PLC) etc.

#### Features

- Totalising
- Hold function
- Benchtop stand for display device incl.
- Wall mount for display device, standard

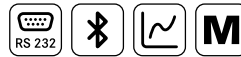
\*not possible in combination with verification. When installing the Bluetooth data interface, the RS-232 data interface can no longer be used

\*\*not possible in combination with signal lamp. When installing the analogue module, the RS-232 data interface can no longer be used

#### STANDARD

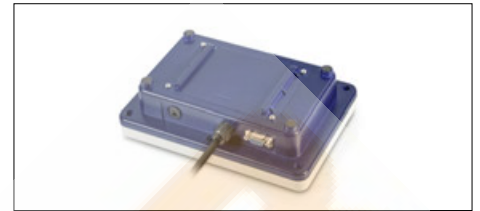


#### FACTORY



#### 2 KFN-TM

Display (segments)	6 digits	5 + 1/2 digits
EU type approval	Yes	Yes
Resolution verifiable (e)	3.000	6.000
Terminal resolution (not verifiable)	60.000	30.000
Weighing capacities	2	2
Weighing units	kg, g	kg
Digit increments	1, 2, 5, 10, n	1, 2, 5, 10, n
Piece counting with reference	n	10, 20, 50, 100, 200
Display, digit height	LCD, 16,5 mm	LCD, 52 mm
Display backlight	yes	yes
Strain gauge load cells	87 - 1200 Ω	87 - 1600 Ω
Linearisation (points)	4	3
Input voltage	12 V, 500 mA	12 V, 500 mA
Permissible ambient temperature	0 °C - 40 °C	-10 °C - 40 °C
Dimensions housing W×D×H	250×160×65 mm	265,5×164,5×96 mm
Net weight	1,00 kg	2,6 kg



Discover more details and matching accessories online!

## Display device with up to three interfaces and optional verification

### Features

- Standardised, convenient KERN concept of operation, consistency across products in terms of design, menu structure, button functions, interface connection and interface protocol
- Industry 4.0: Data and control commands can be exchanged through the KERN Universal Port KUP) using one interface, which can be connected to the housing, or through three parallel interfaces using the KUP Extension box\* (see internet)
- The following interfaces are available as an option: RS-232, USB, Analogue module, Ethernet, WiFi, Bluetooth

- Each interface can be set up separately, e.g.:
  - Interface 1 (WiFi): Continuous sending to a PC for documentation of a process
  - Interface 2 (RS-232): Print stable weight
  - Interface 3 (analogue module): Controlling a device when the target weight is reached
- Available as an option with alibi memory for paperless archiving of weighing results. This also means the results of weighings with mandatory verification can be electronically evaluated and processed further
- Data query and remote control of the balance using a computer or CRM/ERP systems using the KERN Communication Protocol
- Simplified battery replacement through easily-accessible housing. Particularly advantageous for models with optional verification, as the verification seal remains intact
- With Real Time Clock as standard: Enables you to log the weighing results with accurate time information. Even if the power supply is interrupted, the balance can continue to work with the correct time

STANDARD



OPTION



FACTORY



KERN	KFC-TM
Display (segments)	6 digits
EU type approval	Yes
Resolution verifiable (e)	3.000
Terminal resolution (not verifiable)	999.999
Weighing capacities	2
Weighing units	kg, g, lb, ffa, PCS, %   Verifiable: kg, g
Digit increments	5, 10, 20, 50, n
Piece counting with reference	n
Display, digit height	LCD, 48 mm
Display backlight	yes
Strain gauge load cells	87 - 1227 Ω
Linearisation (points)	3
Input voltage	100 V - 240 V
Permissible ambient temperature	-10 °C - 40 °C
Dimensions housing W×D×H	220×145×65 mm
Net weight	0,75 kg



Discover more details and matching accessories online!

## Stainless steel display device with IP68 dust and spray protection and up to four interfaces, with optional verification

### Features

- With dust and spray protection (IP68), which makes it ideal for use in industry and outdoors
- Standardised, convenient KERN concept of operation, consistency across products in terms of design, menu structure, button functions, interface connection and interface protocol
- Industry 4.0: The exchange of data and control commands is optional using up to four interfaces to suit individual requirements: two wired connections (RS-232, Ethernet, USB or analogue module) and two wireless connections (WiFi, Bluetooth)

- Each interface can be set up separately, e.g.:
  - Interface 1 (WiFi): Continuous sending to a PC for documentation of a process
  - Interface 2 (RS-232): Print stable weight
  - Interface 3 (analogue module): Controlling a device when the target weight is reached
  - Interface 4 (Bluetooth): Continuous sending to a tablet to monitor a process

- Data query and remote control of the balance using a computer or CRM/ERP systems using the KERN Communication Protocol
- Available as an option with alibi memory for paperless archiving of weighing results. This also means the results of weighings with mandatory verification can be electronically evaluated and processed further, see *internet*

\*Note: Only two wired connections (RS-232, Ethernet, USB or analogue module) and two wireless connections (WiFi, Bluetooth) can be used at the same time



KERN	KXC-TM
Display (segments)	6 digits
EU type approval	Yes
Resolution verifiable (e)	3.000
Terminal resolution (not verifiable)	999.999
Weighing capacities	2
Weighing units	kg, g, lb, ffa, PCS, %   Verifiable: kg, g
Digit increments	5, 10, 20, 50, n
Piece counting with reference	n
Display, digit height	LCD, 48 mm
Display backlight	yes
Strain gauge load cells	87 - 1227 Ω
Linearisation (points)	3
Input voltage	110 V - 240 V AC
Permissible ambient temperature	-10 °C - 40 °C
Dimensions housing WxDxH	232x150x77,3 mm
Net weight	1,6 kg

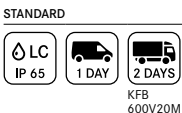


Discover more details and matching accessories online!

## 1 KERN KBP-V20 IP65 Platform

### Features

- Stainless steel-weighing plate, **A** Painted steel base
- 1 load cell, aluminium, silicone-coated, IP65, OIML-R60-approved, class III, 3000 e
- Level indicator and levelling feet for precise levelling of the scale, fitted as standard
- Preparation for easy assembly of the ESD earthing kit on the weighing bridge



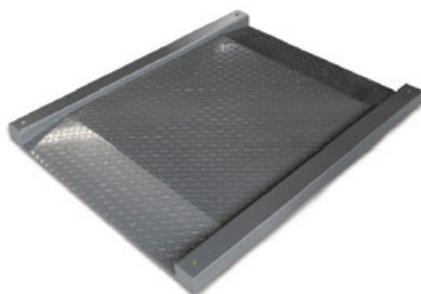
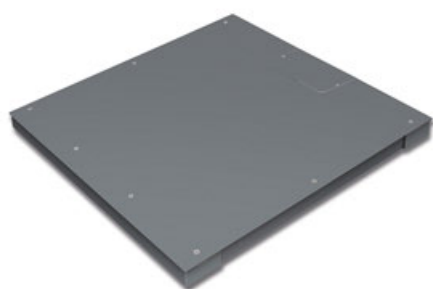
## 2 KERN KFP-V20 IP65 Platform

### Features

- Stainless steel-weighing plate, **B** Painted steel base
- 1 load cell, aluminium, silicone-coated, IP65, OIML-R60-approved, class III, 3000 e
- Level indicator and levelling feet for precise levelling of the scale, fitted as standard



Model	Weighing capacity	Readability	Verification value	Minimal load	Cable length	Net weight	Weighing plate
	[Max] kg	[d] g	[e] g	[Min] g	approx. m	approx. kg	W×D×H mm
<b>1 Platform KBP-V20 IP65</b>							
KBP 6V20LM	3   6	0,2	1   2	20   40	2,5	3,8	300×300×110
KBP 15V20M	6   15	0,5	2   5	40   100	2,5	3,8	300×240×110
KBP 15V20LM	6   15	0,5	2   5	40   100	2,5	7	400×300×110
KBP 30V20M	15   30	1	5   10	100   200	2,5	7	400×300×110
KBP 60V20M	30   60	2	10   20	200   400	2,5	8	400×300×110
KBP 60V20LM	30   60	2	10   20	200   400	2,5	13	500×400×120
KBP 150V20M	60   150	5	20   50	400   1000	2,5	13	500×400×120
KBP 150V20LM	60   150	5	20   50	400   1000	2,5	19	650×500×150
KBP 300V20M	150   300	10	50   100	1000   2000	2,5	19	650×500×150
KBP 600V20M	300   600	20	100   200	2000   4000	2,5	42	800×600×151
<b>2 Platform KFP-V20 IP65</b>							
KFP 3V20M	3	0,1	1	20	2,5	3,4	230×230×106
KFP 6V20M	6	0,2	1   2	20   40	2,5	4,4	230×230×106
KFP 6V20LM	6	0,2	1   2	20   40	2,5	3,8	300×240×109
KFP 15V20M	6   15	0,5	2   5	40   100	2,5	3,8	300×240×109
KFP 15V20LM	6   15	0,5	2   5	40   100	2,5	7	400×300×117
KFP 30V20SM	15   30	1	5   10	100   200	2,5	3,8	300×240×109
KFP 30V20M	15   30	1	5   10	20	2,5	7	400×300×117
KFP 30V20LM	15   30	1	5   10	20	2,5	11	500×400×127
KFP 60V20M	30   60	2	10   20	200   400	2,5	7	400×300×117
KFP 60V20LM	30   60	2	10   20	200   400	2,5	10	500×400×127
KFP 150V20M	60   150	5	20   50	400   1000	2,5	7	500×400×127
KFP 150V20LM	60   150	5	20   50	400   1000	2,5	19	650×500×139
KFP 300V20M	150   300	10	50   100	1000   2000	2,5	19	650×500×139
KFP 600V20AM	600	20	200	4000	2,5	42	800×600×192



### 3 KERN KFP-V20 IP67

#### Weighing bridge

##### Features

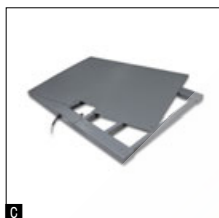
- **D** [Max] < 6000 kg: Weighing plate screwed on from the top, so it is easy to remove and to clean
- **D** [Max] = 6000 kg: Lacquered steel weighing bridge, corrugated steel plate. Extremely resistant to bending due to material thickness
- 4 Load cells, steel, silicone-coated, IP67, OIML R60 approval for verification, Class III, 3000 e
- Can be built in using pit frames (optional)
- Level indicator and levelling feet for precise levelling of the scale, fitted as standard
- Easy access to the junction box from above
- Comfortable levelling of the weighing bridge from the top

### 4 KERN KFD-V20 IP67

#### Weighing bridge

##### Features

- Weighing bridge made of non-slip corrugated steel plate, lacquered, two access ramps integrated, extremely resistant to bending
- Extremely flat construction to facilitate access: access height only 45 mm
- 4 load cells, alloy steel, silicone-coated, IP67, OIML R60 approval for verification, Class III, 3000 e



Discover more details and matching accessories online!



Model	Weighing capacity [Max] kg	Readability [d] g	Verification value [e] g	Minimal load [Min] g	Cable length approx. m	Net weight approx. kg	Weighing plate W×D×H mm
<b>3 Weighing bridge KFP-V20 IP67</b>							
KFP 600V20SNM	600	200	200	4000	5	95	1000×1000×85
KFP 600V20NM	600	200	200	4000	5	150	1500×1250×85
KFP 1500V20SNM	1500	500	500	10000	5	100	1000×1000×85
KFP 1500V20NM	1500	500	500	10000	5	150	1500×1250×85
KFP 3000V20NM	3000	1000	1000	20000	5	150	1500×1250×85
KFP 3000V20LNM	3000	1000	1000	20000	5	175	1500×1500×85
KFP 6000V20M	6000	2000	2000	40000	5	225	1500×1500×123
<b>4 Weighing bridge KFD-V20 IP67</b>							
KFD 600V20M	600	200	200	4000	5	130	1600×1220×95
KFD 600V20LM	600	200	200	4000	5	165	1800×1420×95
KFD 1500V20M	1500	500	500	10000	5	130	1600×1220×95
KFD 1500V20LM	1500	500	500	10000	5	165	1800×1420×95



### 5 KERN KFA-V20 IP67 Weighing beams

#### Features

- Weighing beams, lacquered steel
- 4 load cells, alloy steel, silicone-coated, IP67
- Levelling feet for precise levelling of the weighing beams
- Cable length between weighing beams approx. 5 m
- KFA 600V20S: Model with short weighing beams, ideal for weighing compact items or animals in transport boxes



### 6 KERN KFU-V20/V30 IP67 U-Weighing bridge

#### Features

- KERN KFU-V20: Load range: painted steel (V20), stainless steel (V30) height 90 mm (see larger picture)
- **E** KERN KFU-V30: Load range: stainless steel
- 4 load cells, alloy steel, silicone-coated, IP67, OIML R60 approval for verification, Class III, 3000 e
- 2 rollers and handle for easy transport of the scale



### 7 KERN KFP-V30 IP67 Platform

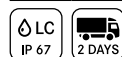
#### Features

- Platform: entirely out of stainless steel, **F** Painted steel base
- 1 weighing cell, stainless steel, silicone-coated, IP67, OIML R60 approval for verification, class III, 3000 e
- Level indicator and levelling feet for precise levelling of the scale, fitted as standard

Discover more details and matching accessories online!



STANDARD



STANDARD



FACTORY



STANDARD



FACTORY



Model	Weighing capacity	Readability	Verification value	Minimal load	Cable length	Net weight	Weighing plate
	[Max] kg	[d] g	[e] g	[Min] g	approx. m	approx. kg	W×D×H mm

#### 5 Weighing beams KFA-V20 IP67

KFA 600V20S	600	200	-	-	5	32	870×170×83
KFA 1500V20	1500	500	-	-	5	38	1270×170×83
KFA 3000V20	3000	1000	-	-	5	36	1270×170×83
KFA 3000V20L	3000	1000	-	-	5	55	2091×120×83
KFA 6000V20	6000	2000	-	-	5	80	1270×160×115
KFA 6000V20L	6000	2000	-	-	5	125	2091×160×115

#### 6 U-Weighing bridge KFA-V20 IP67

KFU 600V20M	600	200	200	4000	5	55	1361×840×80
KFU 1500V20M	1500	500	500	10000	5	55	1361×840×80

#### 6 U-shaped stainless steel weighing bridge KFU-V30 IP67

KFU 600V30M	600	200	200	4000	5	55	1361×840×80
KFU 1500V30M	1500	500	500	10000	5	55	1361×840×80

#### 7 Stainless steel platform KFP-V30 IP67

KFP 15V30M	15	1	5	100	3	8	300×240×107
KFP 30V30SM	30	2	10	200	3	5,0	300×240×107
KFP 30V30M	30	2	10	200	3	8	400×300×111
KFP 60V30M	60	5	20	400	3	8	400×300×111
KFP 60V30LM	60	5	20	400	2,5	10	500×400×120
KFP 60V30XLM	60	5	20	400	2,5	22	650×500×139
KFP 150V30SM	150	10	50	1000	3	10	400×300×111
KFP 150V30M	150	10	50	1000	3	10	500×400×120
KFP 150V30LM	150	10	50	1000	2,5	22	650×500×139
KFP 300V30M	300	20	100	2000	3	22	650×500×139



**8 KERN KFP-V40 IP68**  
Stainless steel platform

**Features**

- Platform: entirely out of stainless steel
- 1 load cell, stainless steel, encapsulated, IP68, OIML R60 approval for verification, class III, 3000 e
- Level indicator and levelling feet for precise levelling of the scale, fitted as standard

**9 KERN KFP-V40 IP68**  
Stainless steel weighing bridge

**Features**

- Weighing bridge entirely made of stainless steel, extremely resistant to bending because of its high material thickness
- **6** Weighing plate fixed with stainless steel screws, for easier access to the loadcells from above
- 4 stainless steel load cells with protection against dust and water splashes to IP68
- OIML R60 approval for verification, Class III, 3000 e
- Can be built in using pit frames (optional)
- Level indicator and levelling feet for precise levelling of the scale, fitted as standard
- Comfortable levelling of the weighing bridge from the top

**10 KERN KFD-V40 IP68**  
Stainless steel weighing bridge

**Features**

- Weighing bridge made from stainless steel, two integrated access ramps, extremely resistant to bending
- Extremely flat construction to facilitate access: access height only 45 mm
- 4 Load cells, stainless steel, encapsulated, IP68, OIML R60 approval for verification, Class III, 3000 e



Discover more details and matching accessories online!

STANDARD FACTORY

LC IP 68 1 DAY **M**

STANDARD FACTORY

LC IP 68 2 DAYS **M**

STANDARD FACTORY

LC IP 68 2 DAYS **M**

Model	Weighing capacity	Readability	Verification value	Minimal load	Cable length	Net weight	Weighing plate
KERN	[Max] kg	[d] g	[e] g	[Min] g	approx. m	approx. kg	W×D×H mm
<b>8 Stainless steel platform KFP-V40 IP68</b>							
KFP 6V40M	6	0,5	1   2	20	3	7	300×240×107
KFP 15V40M	15	1	2   5	40	3	4,8	300×240×107
KFP 15V40LM	15	1	2   5	40	3	7	400×300×111
KFP 30V40M	30	2	5   10	100	3	8	400×300×111
KFP 30V40LM	30	2	5   10	100	3	11	500×400×120
KFP 60V40M	60	5	10   20	200	3	10	400×300×123
KFP 60V40LM	60	5	10   20	200	3	11	500×400×126
KFP 150V40M	150	10	20   50	400	3	12	500×400×126
KFP 150V40LM	150	10	20   50	400	3	20	650×500×139
KFP 300V40M	300	20	50   100	1000   2000	3	20	650×500×139
<b>9 Stainless steel weighing bridge KFP-V40 IP68</b>							
KFP 600V40SM	600	200	200	4000	5	95	1000×1000×85
KFP 1500V40SM	1500	500	500	10000	5	95	1000×1000×85
KFP 1500V40M	1500	500	500	10000	5	150	1500×1250×85
KFP 3000V40M	3000	1000	1000	20000	5	145	1500×1250×85
<b>10 Stainless steel weighing bridge KFD-V40 IP68</b>							
KFD 600V40M	600	200	200	4000	5	130	1600×1220×95
KFD 1500V40M	1500	500	500	10000	5	130	1600×1220×95