

16

ACCESSORIES, SOFTWARE

In our large selection of accessories you will discover everything you need to complement your KERN devices in the best way and make your workflows even more efficient.

As well as high-quality printers, interface cables and numerous adapters, you will also find different software solutions and many other products which will guarantee stable performance.

Visit our webshop as well to see the complete range of accessories and get detailed information about each product.





**Thermal Printer
KERN YKC-01**

Reliable thermal printer for standard applications

Technical data

- Thermal print
- Speed: 300 mm/s
- Max 58 characters per line
- Supported paper widths: 80 mm (roll)
- Operation via mains adapter 230 V/50 Hz standard EU, as standard
- Interfaces: RS-232
- Dimensions housing W×D×H 125×125×150 mm
- Interface cable not included with delivery

Price printer without interface cable, KERN YKC-01

Accessories

- Paper rolls (5 pcs.), KERN YKC-A10



**Thermal Printer
KERN YKH-01**

High-quality thermal printer – fast, robust, user-friendly

Robust, low-maintenance thermal printer for retail, the catering trade and for restaurant kitchens. Extremely compact and long-lasting. Thanks to the waterproof switch cover it is particularly suitable for use under tough, loud environmental conditions

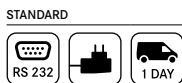
Technical data

- Thermal print
- Speed: 2 line/s
- Max 64 characters per line
- Supported paper widths: 58 mm, 80 mm (roll)
- Operation via mains adapter 230 V/50 Hz standard EU, as standard
- Interfaces: RS-232
- Interface cable not included with delivery
- Dimensions housing W×D×H 140×199×146 mm
- Not suitable for KERN DAB, DLB, FKT, RFE ranges

Price printer without interface cable, KERN YKH-01

Accessories

- Paper rolls (5 pcs.), KERN YKH-A01



**Dot Matrix Printer
KERN YKG-01**

High-quality dot matrix printer

Flexible and rapid dot matrix printer for retail, the catering trade and for restaurant kitchens. To print the weights on normal paper, which is ideal for long-term archiving. This model has an interchangeable interface and you will be impressed by how easy it is to replace the paper and ribbon

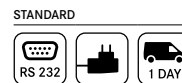
Technical data

- Needle print
- Speed: 4,7 line/s
- Max. 42 characters per line
- Supported paper widths: 58 mm, 70 mm, 76 mm (roll)
- Operation via mains adapter 230 V/50 Hz standard EU, as standard
- Interfaces: RS-232, cash drawer connection, bidirectional parallel
- Interface cable not included with delivery
- Dimensions housing W×D×H 160×248×139 mm
- Not suitable for KERN DAB, DBS, DLB, FKT, RFE ranges

Price printer without interface cable, KERN YKG-01

Accessories

- Paper rolls (5 pcs.), KERN YKG-A01



Important note for printer orders:

Please state your balance model when ordering, so that the printer can be preconfigured in the factory to suit your balance.

NEW



**Needle Printer
KERN YKT-01**

High-quality printer with large LCD display and numerous functions

Technical data

- Printing process: 8 print magnets with dot matrix
- Speed: 1,7 line/s
- Character size (ASCII characters): W×H 1.7×2.6 mm
- Service life: 1 million lines
- Ribbon cartridge: EPSON ERC-22 or ERC-09B
- Operation via mains adapter 230 V/50 Hz (standard EU), as standard

Price printer without interface cable, KERN YKT-01

Accessories

- Colour ribbon for printer (1 pc.), KERN YKT-A03
- Paper roll (1 roll), KERN 911-013-002
- Paper roll (10 rolls), KERN 911-013-010

STANDARD



Tip:

EasyTouch Individual Print

The print product (e.g. labels) can be individually designed. The size of the print area as well as the placement of the print elements can be customized. The barcode function enables the printing of each element as a barcode or QR code.

For further details, see *EasyTouch*



Example printouts with ET Individual Print

Important note for printer orders:

Please state your balance model when ordering, so that the printer can be preconfigured in the factory to suit your balance.

Interface Cable for RS-232

For direct connection to a printer or PC, cable length approx. 1.5 m.
The interface parameters can be set using the balance keypad.

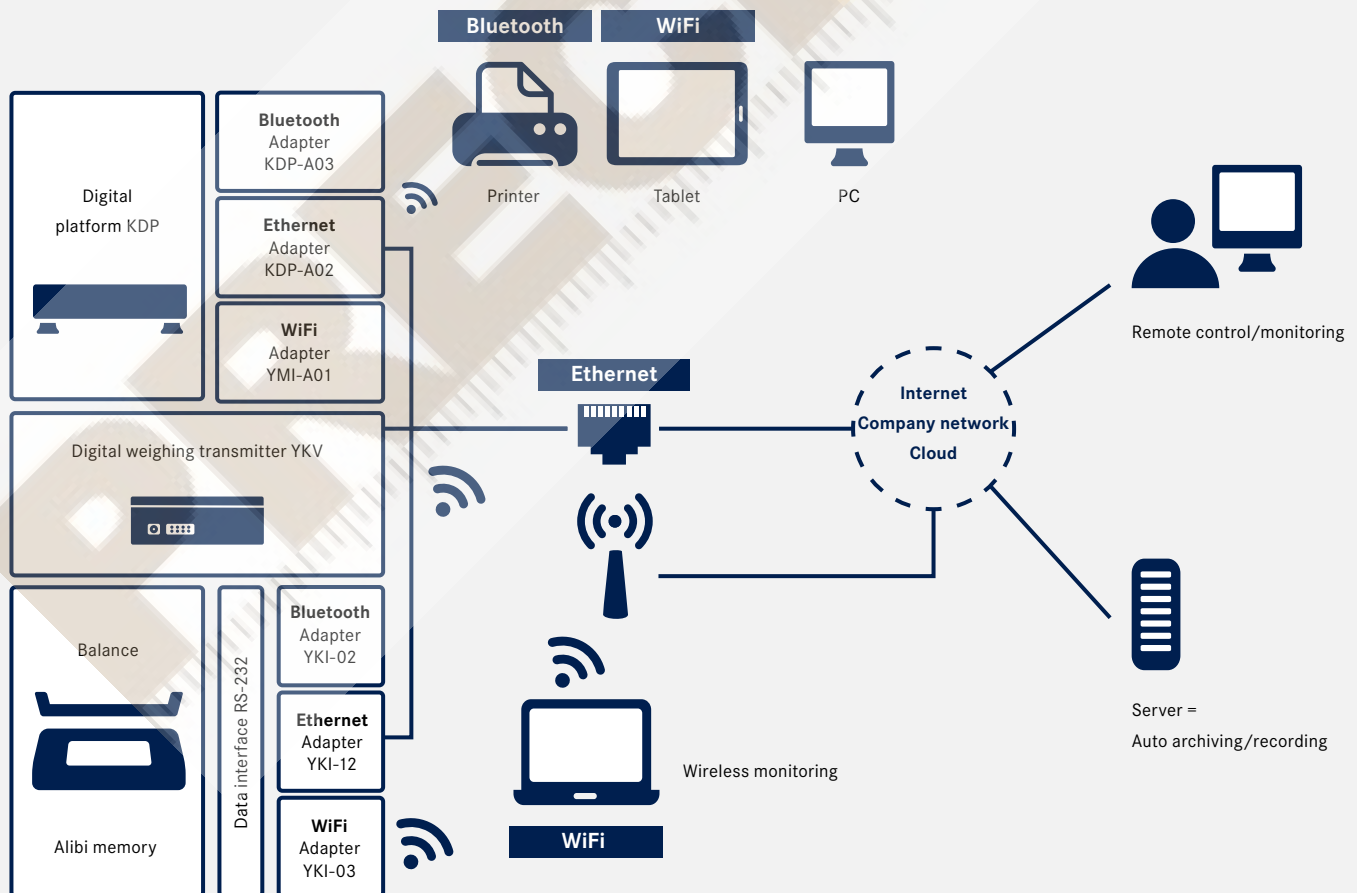
Tip:

The interface cable is **free of charge** if you purchase balance, printer or Ethernet-/WiFi-/Bluetooth adapter together.

Printer, ...		PC, YKI-02*	911-013*, YKN-01*	YKG-01, YKH-01	YKC-01	YKT-01
Balances		KERN	KERN	KERN	KERN	KERN
440, ALS/ALJ, DE-D, EMB-V, FKA, PCD, PLS/PLJ, KDP	CDS, CKE, DS, FKB-A (until year of prod. 2022)			572-926		
EOC, IOC, BID, KIB-T, KIB-TM, UID				EOC-A12		
KGP		572-926	-			
KFB-TM, KFN-TM (until year of construction 2019)	PFB, SFB			CFS-A01		
CPB, EWJ, KFS-TM, PFB				CFS-A01		
CFS, CCS, KFS-TM, IFS (from year of production 2015)		-	CFS-A01	-	CFS-A01	
ABT-NM, PBS/PBJ				770-926 (& ABT ▶ ACS-A01)		
DBS, DLB				572-926		
DAB				MLB-A05		
ABP				MLB-A05		
ADB/ADJ, ACS/ACJ, PNS/PNJ, AXS/AXE				MLB-A05		
EG/EW, PES/PEJ				474-926 (PES/PEJ ▶ MLB-A05)		
PES/PEJ						
CCA				CCA-A01		
RPB (not compatible with YKN-01)		-		CFS-A01		
FES/FEJ, PWS				MLB-A05 (PWS-A02)		
ADS/ADT, PDS/PDT				572-926		

* ONLY WHILE STOCKS LAST

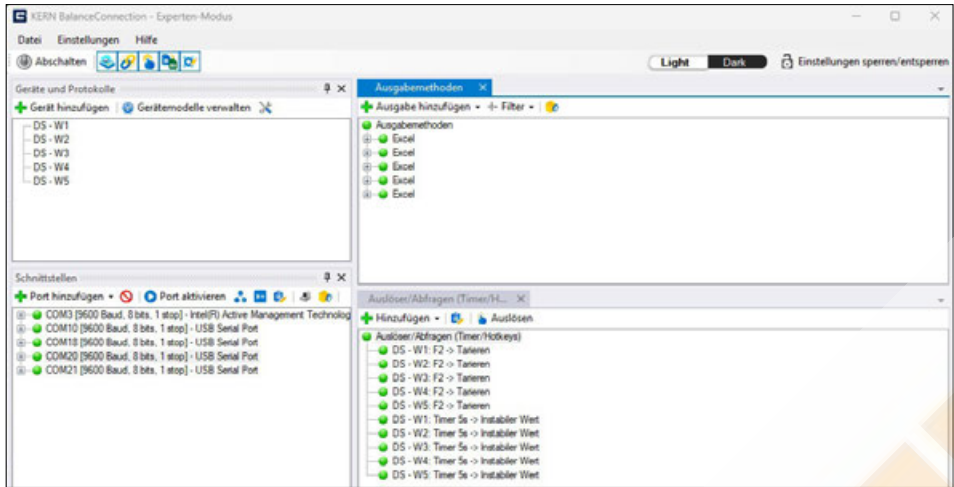
With products from KERN you are ready to face the challenges of Industry 4.0



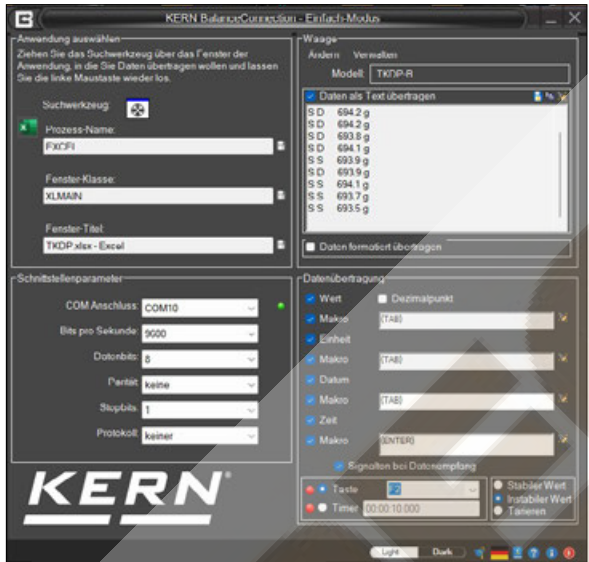
We will help to combine industrial production with the latest information and communication technology, with the aim of improving quality, reducing costs and using time and resources more efficiently so that you are able to react to future requirements in a more flexible manner. You will benefit from our uniform data protocol combined with our BalanceConnection 4.0 data software, for details please see page 167/168.

KERN Software BalanceConnection SCD-4.0

Flexible recording or transfer of measurements, particularly to Microsoft® Excel



Full overview of devices, outputs, queries, interfaces, etc. directly in the output window



Programme start and quick configuration of the RS-232/USB interface

Discover more details and matching accessories online!

Do you have any questions?

The team from our Industry 4.0 centre of expertise will be happy to help: e-mail: etsales@kern-sohn.com

Tip: Or download a free demo version of the BalanceConnection software: <http://balance-connection.kern-sohn.com/demo>

Features

- For operating systems Windows 10, 11, .NET Framwork 4.8.1 required
- Supports balances measuring devices with RS-232, RS-485, Bluetooth, LAN or WiFi network (TCP/UDP/IP)
- Highly flexible formatting of the output (any order, formatting and rounding), particularly recording of date and time for every value transferred, if required
- Any number of devices/interfaces can be connected, as well as simultaneous and synchronised recording of several balances
- Key-activated or time-controlled interrogation of measurements or trigger of device functions, also for continuous recording
- The interface protocols for KERN balances are already predefined (standard configuration)

- Compatible interface cable included when you order a KERN balance at the same time
- Many different transfer and recording options:
 - Microsoft® Excel/Access/Word in the foreground or background
 - Other Windows applications (through key simulation), e.g. shipping software or ERP system (SAP, Sage, etc.)
 - File recording (e.g. as text or CSV file)
 - Print out on text or label printer
 - Screen output such as large display, line chart (drying curve for moisture analyser), histogram, etc.

Benefits

- Typing errors during e.g. manual transfer are avoided
- Automatic recording, e.g. for long-term tests
- Supports GLP-compliant processes
- Can be used across different branches and applications
- Also available immediately as a download license
- Scope of delivery: Download link for 1 license, KERN SCD-4.0-DL

KERN Software BalanceConnection SCD-4.0-PRO

Professional and highly flexible recording or transmission of measured values, in particular also to Microsoft® Excel or Access

	Soll	Ist	Datum / Uhrzeit	Differenz	Abweichung	Gesamt
4	200 g	200,47 g	2023-05-07 12:15	0,47 g	0,23%	200,47 g
6	400 g	411,21 g	2023-05-07 12:15	11,21 g	2,80%	611,68 g
7	1000 g	1.002,39 g	2023-05-07 12:15	2,39 g	0,24%	1.614,07 g
8	5,000 g	4,9993 g	2023-05-07 12:16	-0,0007 g	-0,01%	1.619,0693 g
9	1,000 g	0,9984 g	2023-05-07 12:16	-0,0016 g	-0,16%	1.620,0677 g
10	0,001 g	0,0011 g	2023-05-07 12:17	0,0001 g	10,00%	1.620,0688 g

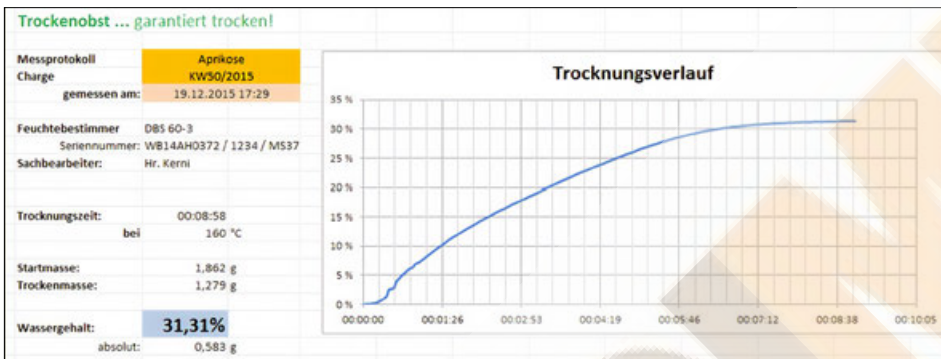
Easy transfer and editing of measuring results e.g. in Microsoft® Excel

Discover more details and matching accessories online!

Do you have any questions?

The team from our Industry 4.0 centre of expertise will be happy to help: e-mail: etsales@kern-sohn.com

Tip: Or download a free demo version of the BalanceConnection software: <http://balanceconnection.kern-sohn.com/demo>



Measurement protocol with moisture analysis progression diagram

Additional features of the PRO version

- In addition to the functions of the standard version (see previous page), the PRO version offers the following enhanced features:
- ODBC/SQL databases such as SQL Server or MySQL
- Transfer to HTTP Webservices/Web forms
- Histogram
- Enables the connection of medical balances to practice EDP systems using the device data transfer protocol (GDT) and also the HL7 protocol
- Implementation of programs/scripts using freely-definable command lines
- Command sequences
- Defining the conditions for specific events and the reaction to these events
- Filter for stability recognition (configurable value storage)
- Central configuration repository, e.g. on the network
- On-screen displays with configurable user interface for flexible balance operation
- Diagram functions and filters: Range markers, extended filters such as slope and area calculation, new trend lines and optional display of the last value per data series

- The data from the diagram, histogram and table can be output in Excel, Word, PDF, CSV and PNG format. The large display is also available as a PNG, Word or PDF file – for a true representation that exactly matches the original
- Windows service for controlling and managing device connections and background processes including time-controlled file recording, printer methods and device data transfer integration. Centralised and user-specific configuration options
- Also available as a cost-optimised package with 5 licences
- Scope of delivery: Download link for 1 License, KERN SCD-4.0-PRO-DL
- Scope of delivery: Download link for 5 licences, KERN SCD-4.0-PRO-DL-AS05

Benefits

- Typing errors during e.g. manual transfer are avoided
- Ideal software where weighing data which has been collected needs to be transferred to a Windows PC
- Particularly suitable for professional integration of weighing systems into existing networks where there is a high demand for automated data transfer and further processing, for integration of databases
- Automatic recording, e.g. for long-term tests
- Supports GLP-compliant processes
- Can be used across different branches and applications
- Any number of balances can be used on one PC/workstation per licence
- Also available immediately as a download license

NEW



**RS-232/Ethernet converter
KERN YKI-10 · YKI-11**

Technical data

- Converter for connecting scales, force measuring instruments, etc. with an RS-232 data interface to an IP-based Ethernet network
- Allows direct integration of measuring devices into most company networks, with automatic configuration using DHCP or statistical IP allocation. The current measurement data can be accessed from the entire network at any time
- The converter supports a wide range of configuration options via the web interface
- Compatible with **KERN BalanceConnection software**
- Suitable for wall mounting or free-standing

Scope of delivery:

KERN YKI-10: RS-232/Ethernet converter with 1x RS-232 port, mains adapter (EU), KERN YKI-10

KERN YKI-11: RS-232/Ethernet converter with 2x RS-232 ports, mains adapter (EU). The two RS-232 ports allow two balances or measuring devices to be connected. They can be managed in parallel. KERN YKI-11



NEW

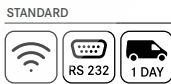


**RS-232/WiFi converter
KERN YKI-12**

Technical data

- Converter for wireless connection of scales, force measuring instruments, etc. with RS-232 interface to WiFi-enabled devices such as tablets, laptops, smartphones or networks
- In this way, where there is a physical separation or a large distance between the devices, the weighing data can be easily transmitted wirelessly from a scale to one or more WiFi devices or to a network (corresponding software required on the WiFi device, not included with the delivery)
- Allows direct integration of measuring devices into most company networks, with automatic configuration using DHCP or statistical IP allocation. The current measurement data can be accessed from the entire network at any time
- The converter supports a wide range of configuration options via the web interface
- Compatible with **KERN BalanceConnection software**

Scope of delivery: RS-232/WIFI converter, mains adapter (EU), KERN YKI-12



Tip: If you order a KERN balance at the same time, then the interface cable is **free of charge** (please specify balance model).

Note: To connect to your network, you will need information from your network administrator. We recommend discussing connecting your device into your network with the administrator before you place your order.



**Large Display
KERN YKD-A02**

Technical data

With superior display size, digit height 3" (76 mm). Luminescent, red LED display for easy reading of weight, even from a distance or under poor lighting conditions. 6 segments, mains connection as standard (230 V, EU/GB), connection using RS-232 data interface, dimensions WxDxH 541x55x180 mm.

Suitable for serie UFA

KERN YKD-A02



**Signal Lamp
KERN CFS-A03**

Technical data

Signal lamp for visual support of weighing with tolerance range. Three-colour LED, red, green, yellow. Power supply via balance using RS-232. Total dimensions WxDxH 100x180x300 mm

Suitable for series BID, CDS, CKE, CPB-N, DS, FCB, FKB, IFS, IFC, IOC, IXC, KFB-TM, KFN-TM, KIB-TM, NFC, SFB, SXC, UFA, UFC

KERN CFS-A03



**Power Supply Adapter Set
KERN YKA-02**

Technical data

From standard EU to GB/US/AUS/CH etc. Four pieces. Ideal for devices with Class II protection (not earthed). Ideal for Euro moulded plug,

KERN YKA-02



**2nd RS-232 Data Interface
KERN CFS-A04**

Technical data

Separate Y cable, e.g. for simultaneous connection of a printer and a signal lamp.

Suitable for series CFS, CPB-N, KFB-TM, UFA, SFB,

KERN CFS-A04

**RS-232/USB Adapter
KERN AFH 122**

Technical data

To connect peripheral devices with USB connection, fits on all balances and measuring instruments with RS-232 port.

Please order the appropriate RS-232 interface cable for your balance at the same time, see table on page 166

Scope of delivery: Converter cable, CD with driver,

KERN AFH 12



Stand (Tripodal)
KERN YKP-02

Technical data

stable and robust, to elevate display device, stainless steel, height-adjustable, large three-legged adjustable foot, height of stand approx. 750–1000 mm, Factory Option.

Suitable for series BFB, BXS, BFS, BFA, IFS, IFB, KFE-TM, KXG-TM, KXS-TM, KEN-TM, NFC, SFE, UFA, UFB,

KERN YKP-02



Protective Dust Cover
KERN ABS-A08

Technical data

For protection from dust and light (Fig. similar).

Suitable for all KERN analytical balances and precision balances with glass draught shield,

KERN ABS-A08



Tare Pan
KERN RFS-A02

Technical data

Made of stainless steel, which makes cleaning easy and hygienic. Ideal for weighing loose screws, small parts as well as fruit, vegetables, cheese, etc.

- W×D×H 400×300×45 mm
- Net weight approx. 554 g

KERN RFS-A02



Tare Pan with Pan Beam
KERN CH-A01N

Technical data

Made of stainless steel. Ideal for weighing loose small parts as well as fruit, vegetables etc. Max. load 30 kg. Removable tare pan which makes cleaning easy and hygienic.

Suitable for models KERN CH 15K20, HCB 20K10, HDB-N, HDB-XL

- Dimensions: tare pan, ϕ /H 160×40 mm (dim. outside), 240×40 mm (dim. inside)
- Pan beam: W×D×H 290×240×300 mm 290×240×340 mm (incl. tare pan)
- Total net weight approx. 500 g

KERN CH-A01N



Universal Density Set
KERN YDB-03

Technical data

Universal density set for precise and convenient density determination of liquids and solids $\leq/\geq 1$.

Suitable for all current KERN analytical balances. Scope of delivery: Beaker (ϕ ×H 84×113 mm), thermometer, sample holder, adapter, equalising weights, volume plummet (stainless steel, 20 g), universal submersible basket for solid bodies which float and sink. The wire of the submersible basket has a diameter of 0.5 mm and therefore complies with the requirements of DIN EN ISO 1183-1 (test methods for the determination of density of non-foamed plastics), KERN YDB-03

Optional:

Density determination of the volume plummet, calibration certificate with accreditation symbol with all data relating to the density and volume, KERN 962-335V



ESD Earthing Kit
KERN YGR-01

Technical data

ESD drain to protect against electrostatic discharge e.g. for electrostatically-charged weighing objects or people who work with the scale, KERN YGR-01



Ioniser to neutralise Electrostatic Charge KERN YBI-01A

Technical data

Goods to be weighed which are non-conductive, such as plastic, china, glass, etc often carry electrostatic charge. The electromagnetic field which then occurs between the goods to be weighed and the balance can cause the weighing result to be distorted by up to a gramme. Therefore, when weighing in milligrammes or even smaller increments, we recommend neutralising the electrostatic charge with the KERN AC-Korona discharge ioniser. With feet supplied with the ioniser, it can be positioned conveniently next to the balance or you can manually direct it from all sides onto a particular item to be weighed.

- Discharge of ozone 0,05 ppm/h
- Total dimensions WxDxH
115x100x60 mm (Adjustable foot retracted),
115x110x80 mm (Adjustable foot folded out)
- Net weight approx. 0,31 kg
- Mains connection 100–240 V, 50/60 Hz, AC power supply, DC 12 V, 500 mA, output,

KERN YBI-01A



Antivibration Table KERN YPS-03

Technical data

The KERN YPS-03 antivibration table has been constructed to absorb vibrations and oscillations, which would otherwise distort the weighing result.

The YPS-03 antivibration table consists of:

- a heavy, polished granite slab (24 kg) and is positioned on absorbing rubber components and is used as a surface on which to stand the analytical balance
- a work table, the work surface of which surrounds the slab and offers many storage options. The sturdy powder-coated steel frame has four height-adjustable feet, which can be used to accurately level the antivibration table if the floor is at all uneven
- You can work in an ergonomic way at the antivibration table. The inlet on the front of the table offers enough space for you to sit down and operate the scale without touching the antivibration table
- All surfaces are hygienic and easy to clean
- Suitable for all KERN analytical balances with total dimensions \leq WxD 300x400 mm
- Total dimensions WxDxH
785x600x800 mm (height adjustable)
- Dimensions granite slab, WxDxH
300x400x80 mm
- Net weight approx. 46 kg

Ready for shipping in 2 working days. Dispatch complete on pallet, simple self-assembly. Please ask for dimensions, gross weight, shipping costs,

KERN YPS-03

STANDARD



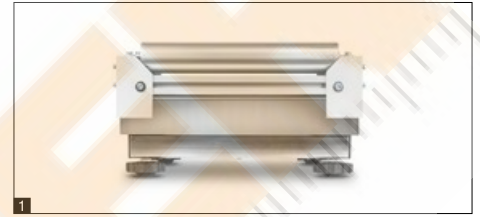
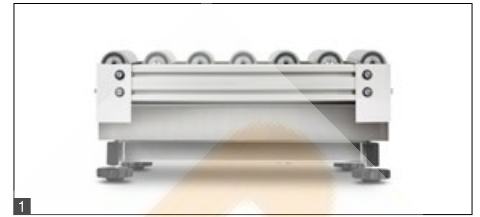
Antivibration Granite Plates KERN YPS-04, YPS-05, YPS-06

Technical data

- The KERN YPS-04, -05, -06 antivibration granite plates are designed to dampen shocks and vibrations that would otherwise distort the weighing results of high precision Laboratory Scales and analytical balances. Also ideal for vibration-free microscope set-up
- The antivibration granite plate is made of polished granite, which is supported on absorbent damping elements
- The antivibration granite plate can be used ergonomically while standing or sitting comfortably
- Compact size, practical for small spaces
- All surfaces are hygienic and easy to clean
- Suitable for all KERN analytical balances, precision balances and microscopes with the corresponding dimensions
- Overall dimensions, WxDxH
YPS-04: 400x450x60 mm
YPS-05: 565x450x60 mm
YPS-06: individual dimensions, according to your requirements
- Net weight approx.
YPS-04: 30 kg
YPS-05: 35 kg
YPS-06: on request

Ready for shipping in 2 working days. Dispatch complete on pallet. Please ask for dimensions, gross weight, shipping costs,

KERN YPS-04
KERN YPS-05
KERN YPS-06



Roller Conveyor KERN YRO-01 / YRO-02 / YRO-03

Through the smooth-running KERN roller conveyor attachments, KERN YRO, you can convert your platform scale into a robust measuring system for rapid and flexible weight determination in conveyor applications.

Especially suitable for use in production and dispatch lines, where time means money. The goods or packages can either be weighed as they pass over the balance or, at fixed stations, heavy goods can easily be pushed onto the scale thanks to the roller conveyor and moved onto the connected roller conveyor.

- **1** Simply connect the roller conveyor attachment to a platform (e.g. KERN IFS, IXC, SXC, KBP, KFP) – done!
- Robust aluminium profile frame. The modular design means that you can easily disassemble it for cleaning or to replace individual components
- Smooth-running, hot-dip galvanised steel rollers with ball bearings
- Conductive rollers
- Suitable for use in dry environments
- Roller distance approx. 30 mm
- Direction of movement is lengthways

- Scope of delivery: 1 roller conveyor attachment (without scale)
- We are happy to adapt the roller conveyor to your scale, adjust the preload or switch-on tolerance, etc. Please ask for your individual offer, your personal KERN contact person will be happy to help you

Model	Total dimensions W×D×H	Suitable for platforms with weighing plate sizes W×D	Total net weight approx.
KERN	mm	mm	kg
YRO-01	405×305×130	400×300	6
YRO-02	505×405×130	500×400	9
YRO-03	655×505×130	650×500	12

