

**PROFESSIONAL
CARE**



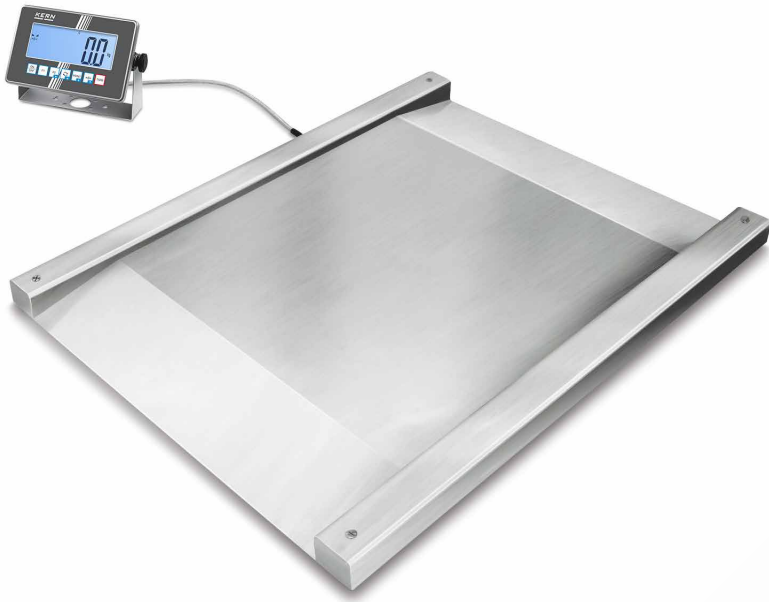
HOSPITAL NEED

KERN scales and measuring instruments for clinics, medical practices and rehabilitation facilities

Reliable scales are not only required in direct contact with patients, but also in adjacent areas such as laboratories, research, pathology, hospital laundries, etc. a wide variety of scales are used. These scales also have to meet high requirements, such as robust, dirt-repellent stainless steel surfaces that are hygienic and easy to clean. Simple operation and clearly legible displays speed up daily work, save costs and help to avoid mistakes.

The practical dynamometers, which we offer in various designs and measuring ranges, are particularly suitable for measuring muscle forces in the context of rehabilitation measures.

NEW



Technical data

- Large backlit LCD display, digit height 48 mm
- Dimensions weighing surface, stainless steel, WxD 1000x1000 mm (without ramps)
- Platform height in the drive-through area: 80 mm
- Overall dimensions WxDxH 1600x1220x95 mm
- Dimensions of display device WxDxH 232x150x80 mm
- Cable length of display device approx. 5 m
- Net weight approx. 105 kg
- Permissible ambient temperature -10 °C/40 °C

Accessories

- **1** Stand to elevate display device, height of stand approx. 1040 mm, KERN BFS-A07
- Pair of base plates to fix the weighing bridge to the floor, KERN BFN-A03
- Internal rechargeable battery pack, operating time up to 22 h without backlight, charging time approx. 8 h, KERN YKR-01
- Memory module with real time clock (alibi memory), KERN YMM-06
- Internal data interface RS-232, interface cable included, KERN KUM-01
- Internal data interface USB, interface cable included, KERN KUM-03
- Internal data interface Ethernet, interface cable included, KERN KUM-04
- Internal data interface WiFi, KERN KUM-05
- Internal data interface Bluetooth, KERN KUM-06
- Analogue module, KERN KUM-08
- For further details, plenty of further accessories and suitable printers, see *Internet*

Stainless steel drive-through scale with two integrated access ramps, verification optional

Features

- Robust stainless steel drive-through scale for rapid weighing of e.g. laundry carts, container trolleys, roller containers, etc.
- Low platform height and integrated access ramps on both sides facilitate access
- Weighing bridge stainless steel, extremely resistant to bending
- 4 welded stainless steel load cells, IP67 dust and spray protection
- Stainless steel display device with protection against dust and water splashes IP68
- Superior display size: digit height 48 mm, bright backlight for easy reading of weighing results, even in poor lighting conditions
- Easy and hygienic cleaning
- Suitable for the ever-increasing hygienic requirements in the medical environment
- Standardised, convenient KERN concept of operation, consistency across products in terms of design, menu structure, button functions, interface connection and interface protocol
- The exchange of data and control commands is optional using up to four interfaces to suit individual requirements: two wired connections and two wireless connections
- Available as an option with alibi memory for paperless archiving of weighing results. This also means the results of weighings with mandatory verification can be electronically evaluated and processed further
- Wall mount for display device, standard

STANDARD

CAL EXT KCP GLP PCS SUM PERCENT UNIT TOL MOVE IP 67 IP 68 IP 68 230 V DMS 2 DAYS

OPTION FACTORY

ET ALIBI RS 232 USB BT 4.0 WIFI ANALOG LAN ACCU +3 DAYS

Note: For verified scales the weighing bridge must be fixed to the floor. Optionally, with an access ramp, a footplate pair or a pit frame. Shipment via freight forwarder. Please ask for dimensions, gross weight, shipping costs

Model	Weighing capacity	Readability	Verification value	Minimal load	Options
					Verification
KERN	[Max] kg	[d] kg	[e] kg	[Min] kg	MUM KERN
NXC 600K-1M	600	0,2	0,2	4	965-230
NXC 1.5T-4M	1500	0,5	0,5	10	965-230

Note: For devices that require verification (conformity assessment according to NAWI 2014/31/EU), please include the verification when placing your order. The initial verification is not possible after delivery. Please inform the full address of the location of use for the initial verification.



Compact organ scale made of stainless steel, particularly well protected and hygienic to clean thanks to IP67 protection and smooth stainless steel surfaces

Features

- Particularly suitable to determine the specific weight of organs, tissues, etc. in pathology or in the laboratory
- Thanks to the stainless steel design of the housing and platform with smooth surface, the scale is rust-free and easy to clean
- Protection against dust and water splashes IP67 (only when using battery)
- High mobility: thanks to battery operation, compact, lightweight construction, it is suitable for the use in several locations
- Protective working cover included with delivery

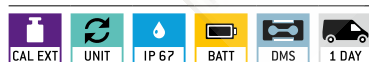
Technical data

- Large backlit LCD display, digit height 25 mm
- Overall dimensions W×D×H 285×255×90 mm
- Batteries included, 4×1.5 V AA, operating time up to 48 h
- Net weight approx. 3,8 kg
- Permissible ambient temperature 5 °C/35 °C

Accessories

- Protective working cover, scope of delivery 5 items, KERN FOB-A13S05
- External mains adapter, KERN YKA-29
- **1** Tare pan made from stainless steel, overall dimensions W×D×H 400×300×45 mm KERN RFS-A02

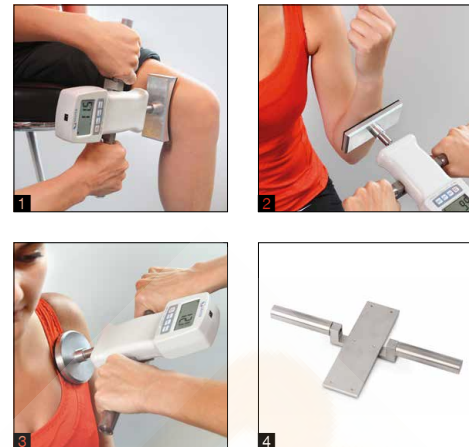
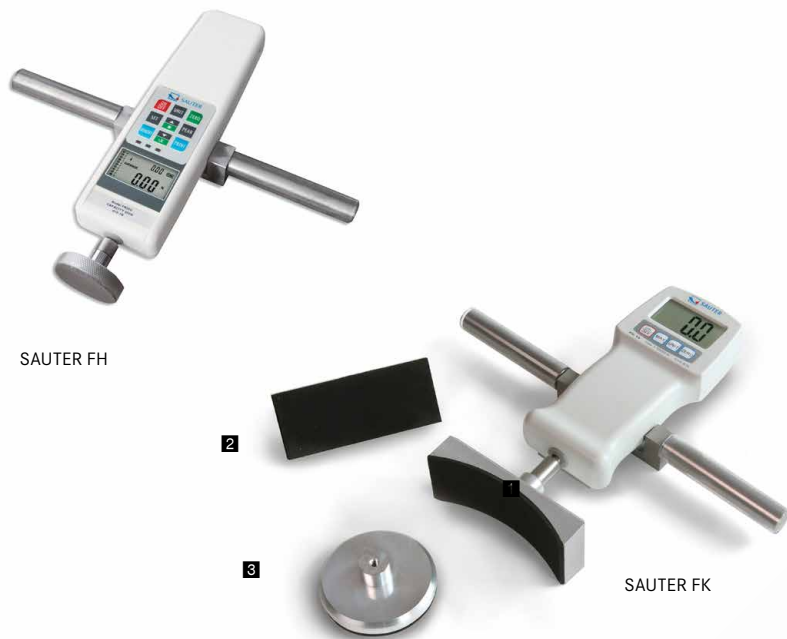
STANDARD



OPTION



Model	Weighing capacity	Readability	Weighing plate W×D
KERN	[Max] kg	[d] g	mm
Multi-division balance, with increasing or decreasing load, it switches automatically to the next largest or smallest weighing range [Max] and readout [d].			
FOB 7K-4NLO	5 7,5	0,5 1	252×200



Force measurement for medical applications

Features

- Determining muscle function and force is used within many areas of medical diagnostics. Amongst others, in
 - orthopaedics for determining the function of the musculoskeletal system
 - physiotherapy for restoring motivity
 - occupational therapy for treating physical damage
- Within sport, too, measuring muscular force development can be used alongside training
- These measurements can be supported by the SAUTER FK (alternatively SAUTER FH) force gauge when connected with the three physio sensors (AC 45, AC 46, AC 47) as shown
- These sensors to measure muscular strength have been designed in an ergonomic manner. The surface is made of soft foam rubber, which sits comfortably against the skin

- Connecting the precision measuring device with the optional stainless steel handles SAUTER AFK 02 | AFH 04 means that you can obtain reliable weighing results
- All components can be ordered individually

Technical data

SAUTER FK

- Ready for use: Batteries included, 6×1.5 V AA

SAUTER FH

- Rechargeable battery pack integrated, as standard, operating time up to 40 h without backlight, charging time approx. 120 min

Accessories

- **1** Concave force sensor with optimised radius for the measurement particularly of arms and legs up to 1 kN, inner thread: M6, KERN AC 45
- **2** Flat square-shaped sensor for lateral power sensing of back, chest or arm up to 1 kN, inner thread: M6, KERN AC 46
- **3** Round sensor to measure particular muscle groups, such as, for example, the shoulder up to 1 kN, inner thread: M6, KERN AC 47

SAUTER FK

- **4** Stainless steel handle bar with rubber grip, SAUTER AFK 02
- Threaded pin made of steel for SAUTER force gauges and clamps, external thread: M6, internal thread: M8, KERN AFM 22

SAUTER FH

- **4** Stainless steel handle bar with rubber grip, SAUTER AFH 04

STANDARD											OPTION	
PEAK	PUSH/PULL	MEMORY	RS 232	USB	STATISTIC	TOL	ZERO	BATT	ACCU	230 V	1 DAY	SOFTWARE
		FH	FH	FH	FH	FH		FK	FH			FH

Model	Measuring range [Max] N	Division [d] N	Thread	Overall dimensions W×D×H mm	Net weight approx. kg
SAUTER					
FK 50	50	0,02	M8	195×82×35	0,75
FK 100	100	0,05	M8	195×84×35	0,60
FK 250	250	0,1	M8	195×82×35	0,60
FK 500	500	0,2	M8	195×84×35	0,65
FK 1K	1000	0,5	M8	195×83×35	0,50
FH 50	50	0,01	M6	280×70×40	0,55
FH 100	100	0,05	M6	280×70×40	0,55
FH 200	200	0,1	M6	280×70×40	0,55
FH 500	500	0,1	M6	280×70×40	0,55



2025's MOST WANTED!

Most wanted and highly coveted: Discover the future of weighing and measuring technology with more than 5000 high-quality products. The new KERN product catalogues 2025 are available in five languages!

BALANCES AND TEST SERVICE

Get a full overview of the wide range from KERN, including our high-quality balances, test weights and services such as verification and calibration services.

MEDICAL SCALES

Our medical scales cover the full array: baby scales to personal scales, chair scales and adiposity scales through to hand grip dynamometers, pharmaceutical balances and veterinary scales, we offer the complete range.

MICROSCOPES AND REFRACTOMETERS

Discover our large range of optical instruments, such as, for example our compound, polarisation or fluorescence microscopes, or our analogue and digital refractometers.

SAUTER MEASURING TECHNOLOGY

From force-measuring devices through to hardness measuring equipment and on to measuring cells - you can find everything you need for accurate, reliable measurements.

TEST SERVICE BROCHURE

Detailed information on all topics pertaining to the calibration and conformity assessment of balances, test weights and measuring devices.