

# PATIENTS AND CUSTOMERS OPTIMUM CARE

## Weight management in the care sector – with the wide variety of balances from KERN you can guarantee the very best patient care for your customers

Our KERN range guarantees high-quality patient care in care institutions and clinics. Our medical scales are available in different versions and offer high precision, the highest levels of safety and comfort for all patient groups.

With our comprehensive range of products and support, we can help you as a dealer to effectively meet the challenges of your customers in the care sector and strengthen your market position.



→ Do you need a personal consultation?  
Please contact us

### KERN advantages for you as a dealer:

- **Expand your product portfolio** – with our balances you can position yourself as an all-round equipment supplier for care institutions.
- **Increase your market opportunities** – at a time when the population is ageing and the need for high-quality care is increasing, our products offer significant opportunities for growth.
- **Increase customer satisfaction** – by providing products, which simplify day-to-day nursing care and improve patient care.
- **Support and training** – we offer extensive training courses and technical support, to make sure that care institutions gain the most benefit from our products.



### The KERN range – ideal for the healthcare sector

**Precise, reliable measurements:** Precise weight data is crucial for the correct dosage of medication and for monitoring the patients' nutritional situation.

**Improved safety and comfort:** Our wheelchair and chair weighers maximise safety and stability, while handrail scales offer patients the very best support when standing.

**Supporting digitization:** Our balance models are fitted with optional interfaces which enable them to be integrated seamlessly into the systems of healthcare facilities. This makes it easier to efficiently monitor, document and manage patient data.

#### Excerpt from the KERN product range for medical devices:

##### Personal scales with and without altimeter

For routine monitoring and calculation of body mass index



##### Chair weighers

A safe and comfortable solution for weighing patients who cannot stand safely

##### Wheelchair platform scales

Simple and effortless weight measurement for patients who are dependent on a wheelchair



##### Handrail scales

To support patients who need support when standing



Discover more details and matching accessories online!

## Mobile chair scale in ergonomically-optimised design for safe, convenient weighing

### Features

- This chair scale is the ideal measuring instrument for elderly care and for paramedics, and is also suitable for overweight people with a weight
- **1** Mobile version with four steerable wheels and particularly convenient locking brakes on both rear wheels
- With its four steerable wheels, this chair scale provides maximum mobility by bringing the scale to the patient. This ensures more efficient use of time for the staff and greater safety for the patients who can be weighed in their familiar environment
- The rollers, with their large diameter, make it easier to get over door thresholds, edges and across the gaps into elevators
- For fragile patients, the comfortable, ergonomically optimised seat offers secure support during weighing
- Because of the clearly contrasting black colour of the seating surface and footrests ideally suitable for dementia patients

- **2** Two foldable armrests and footrests make transfers into the chair easier. Ideal for overweight patients or barrier-free use, e.g. for transfers from a bed to the scale
- **3** Ergonomically positioned carrying handles
- Hold function: While weighing patients that are unable to sit still, a mean average weight value is determined
- BMI function to determine underweight/normal weight/surplus weight
- Practical battery operation using standard batteries ensures a high level of flexibility and freedom from mains adapters, sockets, chargers, etc.
- High resolution readability: readability [d] can be increased by one decimal place for 5 sec. by the touch of a key
- Protective working cover included with delivery

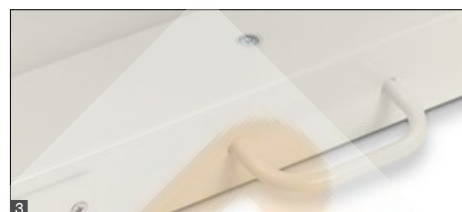
### Technical data

- Large LCD display, digit height 25 mm
- Dimensions of display device W×D×H 200×130×60 mm
- Dimensions of seating surface W×D 390×360 mm
- Overall dimensions W×D×H 625×990×985 mm
- Batteries included, 6×1.5 V AA, operating time up to 40 h
- Net weight approx. 22 kg

STANDARD



Model	Weighing capacity	Readability
	[Max] kg	[d] kg
<b>KERN</b>		
<b>MCD 300K-1</b>	300	0,1



Discover more details and matching accessories online!

## Mobile wheelchair platform scale with handles and rollers

### Features

- Especially suitable for weighing patients in wheelchairs because of the low-profile platform which can be approached from either side
- **1** The large steel weighing plate also makes it ideal for weighing obese patients
- Also ideal for rapid weighing of, for example, laundry carts, container trolleys, roller containers, etc. to 600 kg
- Lightweight, compact construction for mobile use
- **2** The scale can easily be transported using the two rollers and two handles and does not require much storage space
- PRE-TARE function for deduction of a known weight, for example of a wheelchair. Memory for ten PRE-TARE values
- **3** Level indicator to level the balance precisely
- Wall mount for display device, standard
- Universal external mains adapter included with delivery
- Protective working cover included with delivery

### Technical data

- Large backlit LCD display, digit height 25 mm
- Dimensions weighing surface WxD 800x800 mm
- Dimensions of display device WxDxH 235x114x51 mm
- Cable length of display device approx. 5 m
- Overall dimensions WxDxH 1100x1000x80 mm
- Optional battery operation, 4x1.5 V AA not included in scope of delivery, operating time up to 60 h
- Net weight approx. 40 kg

STANDARD



**1**

Model	Weighing capacity	Readability
	[Max] kg	[d] kg
<b>KERN</b>		
<b>MWC 600K-1</b>	600	0,1



Discover more details and matching accessories online!

## Hand grip dynamometer, e.g. for rehabilitation treatment after accidents

### Features

- Especially suitable for use in rehabilitation centres for determining manual clamping force
- There are four measuring methods, which for example, as part of a rehabilitation program, help the medical staff to monitor the fitness of the patient's hands and carry out controlled training:
  - Real time mode: immediately shows the client's current strength
  - Peak/Max mode: shows the maximum strength of a client's grip
  - Average mode: Calculates the average strength from two grips
  - Counting mode: Counts the number of presses which exceed a previously defined strength limit
- An ideal device to determine reduced handstrength and among others a possible mortality risk of elderly persons as well as a malnutrition in case of chemotherapy or similar treatments
- Safe, comfortable use thanks to non-slip rubber grips

- Integrated AUTO-OFF function after 1 min minute to preserve the batteries
- Weight displayed in kg or lb
- KERN MAP 80K1S: Special version for children: The small handle depth allows children in particular to easily and ergonomically grip the handles
- KERN MAP 130K1: Special version for body builders: Its design and extended measuring range mean that it offers additional capacity, which can accommodate the higher fundamental force exerted by body builders
- **1** Exchangeable springs facilitate fast switching of the capacity (additional spring sets are included with delivery). The varying rigidity of the individual springs makes the hand grip dynamometer ideal for a wide variety of patient groups, e.g. children or senior citizens or in sports medicine
- **2** Stable case for safe, easy transport and for storage of the additional spring sets, standard, WxDxH 350x265x85 mm

### Technical data

- LCD graphic display, digit height 12 mm
- Batteries included, CR2450, operating time up to 53 h
- Net weight approx. 0,35 kg



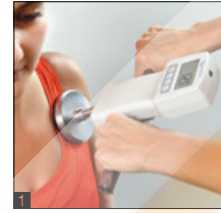
Model	Measuring range		Spring sets	Overall dimensions	Option
	[Max] kg	[d] g			ISO Calibr. Certificate
<b>KERN</b>			kg	WxDxH mm	KERN
<b>MAP 80K1S</b>	80	100	10, 20, 40, 80	55x88x212 mm	961-102K
<b>MAP 80K1</b>	80	100	20, 40, 80	55x102x212 mm	961-102K
<b>MAP 130K1</b>	130	100	40, 80, 130	55x102x212 mm	961-102K



SAUTER FK



SAUTER FH



Discover more details and matching accessories online!

## Force measurement for medical applications

### Features

- Determining muscle function and force is used within many areas of medical diagnostics. Amongst others, in
  - orthopaedics for determining the function of the musculoskeletal system
  - physiotherapy for restoring motivity
  - occupational therapy for treating physical damage
- Within sport, too, measuring muscular force development can be used alongside training

- **1** These measurements can be supported by the SAUTER FK (alternatively SAUTER FH) force gauge when connected with the three physio sensors (AC 45, AC 46, AC 47) as shown
- **1** These sensors to measure muscular strength have been designed in an ergonomic manner. The surface is made of soft foam rubber, which sits comfortably against the skin
- Connecting the precision measuring device with the optional stainless steel handles means that you can obtain reliable weighing results

### Technical data

#### SAUTER FK

- Ready for use: Batteries included, 6×1.5 V AA

#### SAUTER FH

- Rechargeable battery pack integrated, as standard, operating time up to 40 h without backlight, charging time approx. 120 min

**Note:** All components must be ordered separately, see internet

STANDARD



Model	Measuring range [Max] N	Division [d] N	Thread	Overall dimensions W×D×H mm	Net weight approx. kg
<b>SAUTER</b>					
FK 50	50	0,02	M8	195×82×35	0,75
FK 100	100	0,05	M8	195×84×35	0,60
FK 250	250	0,1	M8	195×82×35	0,60
FK 500	500	0,2	M8	195×84×35	0,65
FK 1K	1000	0,5	M8	195×83×35	0,50
FH 50	50	0,01	M6	280×70×40	0,55
FH 100	100	0,05	M6	280×70×40	0,55
FH 200	200	0,1	M6	280×70×40	0,55
FH 500	500	0,1	M6	280×70×40	0,55

# HOSPITAL NEED

## KERN scales and measuring instruments for clinics, medical practices and rehabilitation facilities

Reliable scales are not only required in direct contact with patients, but also in adjacent areas such as laboratories, research, pathology, hospital laundries, etc. a wide variety of scales are used. These scales also have to meet high requirements, such as robust, dirt-repellent stainless steel surfaces that are hygienic and easy to clean. Simple operation and clearly legible displays speed up daily work, save costs and help to avoid mistakes.

The practical dynamometers, which we offer in various designs and measuring ranges, are particularly suitable for measuring muscle forces in the context of rehabilitation measures.






Discover more details and matching accessories online!

## Compact organ scale made of stainless steel, particularly well protected and hygienic to clean thanks to IP67 protection and smooth stainless steel surfaces

### Features

- Particularly suitable to determine the specific weight of organs, tissues, etc. in pathology or in the laboratory
- Thanks to the stainless steel design of the housing and platform with smooth surface, the scale is rust-free and easy to clean
- Protection against dust and water splashes IP67 (only when using battery)
- High mobility: thanks to battery operation, compact, lightweight construction, it is suitable for the use in several locations
- Protective working cover included with delivery
- Option:  Tare pan made from stainless steel, see internet

### Technical data

- Large backlit LCD display, digit height 25 mm
- Overall dimensions W×D×H 285×255×90 mm
- Batteries included, 4×1.5 V AA, operating time up to 48 h
- Net weight approx. 3,8 kg
- Permissible ambient temperature 5 °C/35 °C

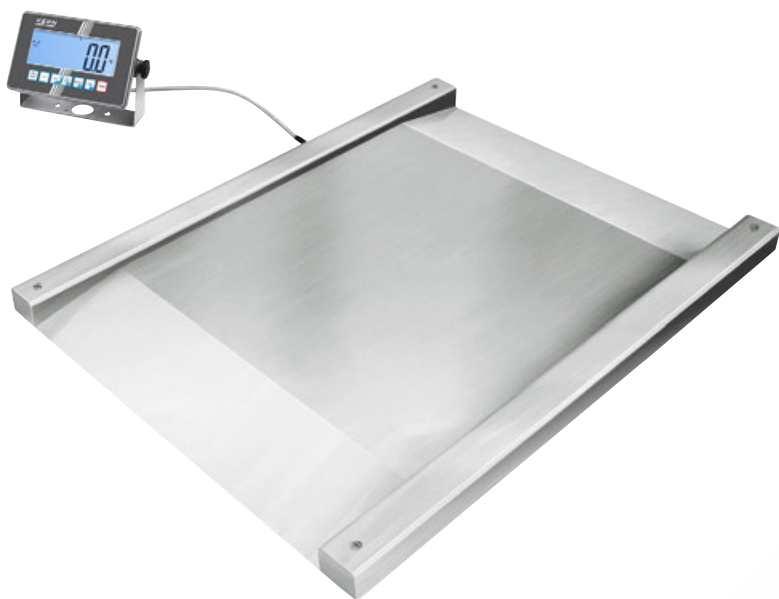
STANDARD



OPTION



Model	Weighing capacity	Readability	Weighing plate W×D
KERN	[Max] kg	[d] g	mm
Multi-division balance, with increasing or decreasing load, it switches automatically to the next largest or smallest weighing range [Max] and readout [d].			
FOB 7K-4NL	5   7,5	0,5   1	252×200



Discover more details and matching accessories online!

## Stainless steel drive-through scale with two integrated access ramps, verification optional

### Features

- Robust stainless steel drive-through scale for rapid weighing of e.g. laundry carts, container trolleys, roller containers, etc.
- Low platform height and integrated access ramps on both sides facilitate access
- Weighing bridge stainless steel, extremely resistant to bending
- 4 welded stainless steel load cells, IP67 dust and spray protection
- Stainless steel display device with protection against dust and water splashes IP68
- Superior display size: digit height 48 mm, bright backlight for easy reading of weighing results, even in poor lighting conditions
- Easy and hygienic cleaning
- Suitable for the ever-increasing hygienic requirements in the medical environment

- Standardised, convenient KERN concept of operation, consistency across products in terms of design, menu structure, button functions, interface connection and interface protocol
- The exchange of data and control commands is optional using up to four interfaces to suit individual requirements: two wired connections and two wireless connections
- Available as an option with alibi memory for paperless archiving of weighing results. This also means the results of weighings with mandatory verification can be electronically evaluated and processed further
- Wall mount for display device, standard
- Option: Stand to elevate display device, see internet

### Technical data

- Large backlit LCD display, digit height 48 mm
- Dimensions weighing surface, stainless steel, WxD 1000x1000 mm (Without ramps)
- Platform height in the drive-through area: 80 mm
- Overall dimensions WxDxH 1600x1220x95 mm
- Dimensions of display device WxDxH 232x150x77,3 mm
- Cable length of display device approx. 5 m
- Net weight approx. 130 kg
- Permissible ambient temperature -10 °C/40 °C

Shipment via freight forwarder. Please ask for dimensions, gross weight, shipping costs

### STANDARD



### OPTION FACTORY



Model	Weighing capacity	Readability	Verification value	Minimal load	Options
					Verification
<b>KERN</b>	[Max] kg	[d] kg	[e] kg	[Min] kg	KERN
<b>NXC 600K-1M</b>	600	0,2	0,2	4	965-230
<b>NXC 1.5T-4M</b>	1500	0,5	0,5	10	965-230

Note: For devices that require verification (conformity assessment according to NAWI 2014/31/EU), please include the verification when placing your order. The initial verification is not possible after delivery. Please inform the full address of the location of use for the initial verification. For verified scales the weighing bridge should be fixed to the floor. Optionally, with an access ramp, a footplate pair or a pit frame

# JUST SURFACED!



Take advantage of the latest innovations in measuring and weighing technology and dive into a world of precision, quality and versatility. Discover over 5,000 high-quality products and numerous services – perfectly tailored to your professional requirements. The new KERN product catalogues 2026 are available in five languages!

## BALANCES AND TEST SERVICE

Get a full overview of the wide range from KERN, including our high-quality balances, test weights and services such as verification and calibration services.

## MEDICAL SCALES

Our medical scales cover the full array: baby scales to personal scales, chair scales and adiposity scales through to hand grip dynamometers, pharmaceutical balances and veterinary scales, we offer the complete range.

## MICROSCOPES AND REFRACTOMETERS

Discover our large range of optical instruments, such as, for example our compound, polarisation or fluorescence microscopes, or our analogue and digital refractometers.

## SAUTER MEASURING TECHNOLOGY

From force-measuring devices through to hardness measuring equipment and on to measuring cells - you can find everything you need for accurate, reliable measurements.

## TEST SERVICE BROCHURE

Detailed information on all topics pertaining to the calibration and conformity assessment of balances, test weights and measuring devices.