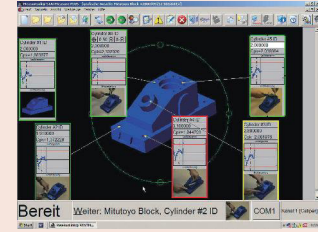


Quality Management Software
Page 15



Digimatic Mini Processors
Page 20



Signal Cables
Page 21



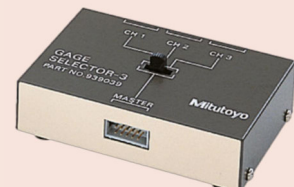
Wireless Communication System U-WAVE
Page 24



Digimatic Interface
Page 29



Timerbox, Digimatic Switch Box
Page 34



MeasurLink 10

An Integrated Solution for Quality Data Management

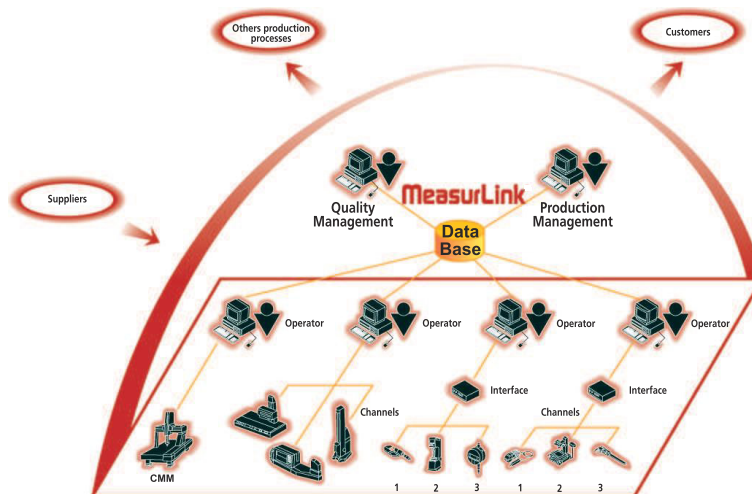
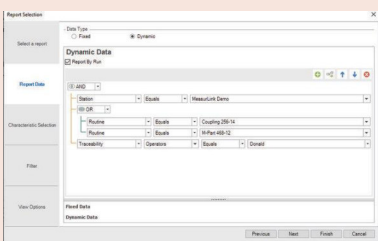
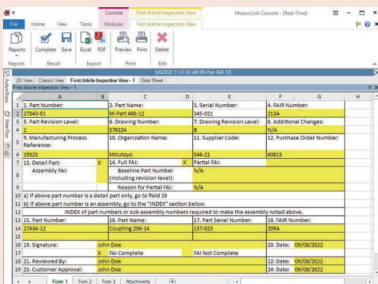
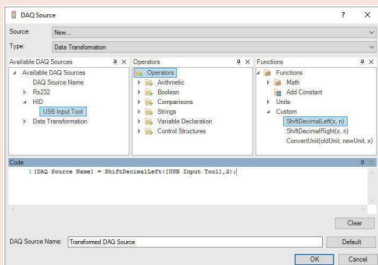
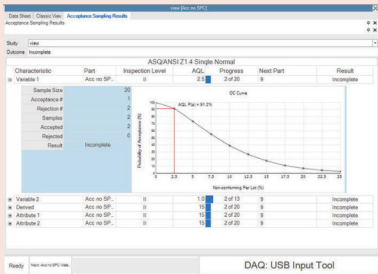
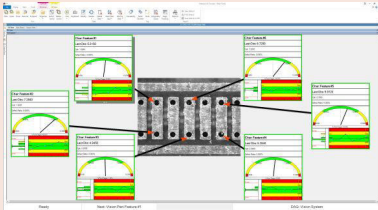
Most of Mitutoyo's electronic instruments can output data via optional connecting cables or wireless transmitters & receivers in the form of the Digimatic code. The Digimatic code can also be converted in RS-232C format by any of several available gage multiplexers. In this way, digital data can be sent to PCs for data acquisition and advanced statistical analysis.

As a client/server application, MeasurLink gives you the performance you need through distributed processing. Combined with a multi-user relational database, MeasurLink delivers a safe and organized data warehousing system making quality data available for viewing and analysis by any member of the production, engineering and managerial staff throughout your company. Inspection in the factory produces data for analysis, corrective action, and various reporting needs. As the backbone of your quality efforts, MeasurLink is guaranteed to reduce your production costs and increase your bottom line.

MeasurLink is capable of linking and managing multiple "islands" of inspection into a common database of part information, statistical data, gage information, process, etc. Information is shared across an entire manufacturing facility.

Group Licensing

MeasurLink is available in several modules offering you a wide range of solutions, from data acquisition to manager views and gage management. Details about all modules can be found on the next pages. However, you can create your own package and combine modules by choosing one of the following license bundles:



No.	Description
64AAB843R	MeasurLink 10 Site License - 30 Licenses*
64AAB844R	MeasurLink 10 Workgroup License - 15 Licenses*
64AAB846R	MeasurLink 10 Workgroup License - 10 Licenses*
64AAB847R	MeasurLink 10 Workgroup License - 5 Licenses*
64AAB845R	MeasurLink 10 Additional Site License - 1 License after 30 Licenses*
64AAB848R	MeasurLink 10 Academic License - 20 Licenses*
64AAB843R-U	MeasurLink 10 Site License Upgrade - 30 Licenses*
64AAB844R-U	MeasurLink 10 Workgroup License Upgrade - 15 Licenses*
64AAB846R-U	MeasurLink 10 Workgroup License Upgrade - 10 Licenses*
64AAB847R-U	MeasurLink 10 Workgroup License Upgrade - 5 Licenses*
64AAB845R-U	MeasurLink 10 Additional Site License Upgrade - 1 License after 30 Licenses*
64AAB848R-U	MeasurLink 10 Academic License Upgrade - 20 Licenses*

*Real-Time Professional 3D is not included



MeasurLink brochure available on request

MeasurLink 10

MeasurLink Real-Time Standard Edition

MeasurLink 10 Real-Time Standard Edition is designed for customers that do not need to connect to major instruments such as CMMs, Vision and Form, etc. systems via DDE or ASCII file import.

It has basic views to allow the user to create Parts, Characteristics with nominal and tolerance, Traceability lists, etc. The data collection interface provides real-time graphics for Run charts, Control charts, Histograms, Statistics, etc. Standard views include the Datasheet (observations and charts), the Classic View (chart windows), and the 2D view (pictures with callouts that include charts and statistical data). This application does not support data filters. Full reporting functionality with templates is provided.

Supported data sources include keyboard, RS232C, HID, MTConnect, OPC UA and MQTT devices.

No.	Description
64AAB836R	MeasurLink 10 Real-Time Standard
64AAB836R-U	MeasurLink 10 Real-Time Standard Upgrade

MeasurLink Real-Time Professional Edition

MeasurLink 10 Real-Time Professional Edition is designed for customers that do need to connect to major instruments such as CMMs, Vision and Form, etc. systems via DDE or ASCII file import.

It has basic views to allow the user to create Parts, Characteristics with nominal and tolerance, Traceability lists, etc. The data collection interface provides real-time graphics for Run charts, Control charts, Histograms, Statistics, etc. Standard views include the Datasheet (observations and charts), the Classic View (chart windows), and the 2D view (pictures with callouts that include charts and statistical data). This application does support data filters. Full reporting functionality with templates is provided.

Supported data sources include keyboard, RS232C and HID devices, MTConnect, OPC UA, MQTT, DDE, ASCII and QIF (xml-based) file imports.

No.	Description
64AAB837R	MeasurLink 10 Real-Time Professional
64AAB837R-U	MeasurLink 10 Real-Time Professional Upgrade

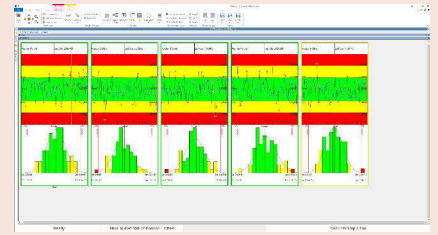
MeasurLink Real-Time Professional 3D Edition

MeasurLink 10 Real-Time Professional 3D Edition is designed for customers that wish to collect data using the Hoops 3D graphics view.

It has basic views to allow the user to create Parts, Characteristics with nominal and tolerance, Traceability lists, etc. The data collection interface provides real-time graphics for Run charts, Control charts, Histograms, Statistics, etc. Standard views include the Datasheet (observations and charts), the Classic View (chart windows), and the 2D view (pictures with callouts that include charts and statistical data). This application does support data filters. Full reporting functionality with templates is provided.

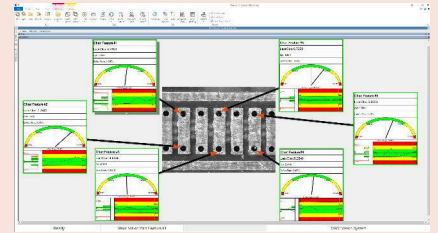
Supported data sources include keyboard, RS232C and HID devices, MTConnect, OPC UA, MQTT, DDE, ASCII and QIF (xml-based) file imports.

No.	Description
64AAB838R	MeasurLink 10 Real-Time Professional 3D
64AAB838R-U	MeasurLink 10 Real-Time Professional 3D Upgrade



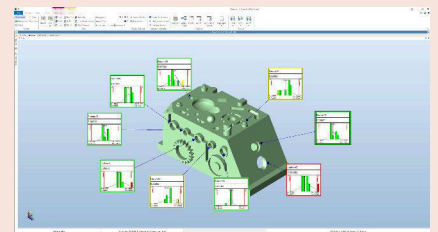
Optional accessories

No.	Description
937179T	Footswitch for SPC
63AAA424	USB-Space Footswitch Interface, for MeasurLink

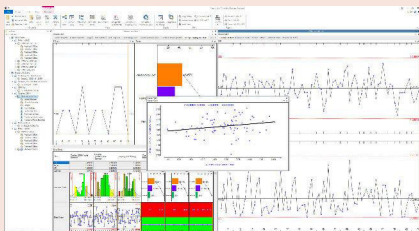


Optional accessories

No.	Description
63AAA424	USB-Space Footswitch Interface, for MeasurLink
937179T	Footswitch for SPC



MeasurLink 10



MeasurLink Process Analyze Professional Edition

MeasurLink 10 Process Analyzer Professional Edition is designed for Quality Engineers. Offline viewing of Real-Time data in a networked environment, all views supported by Real-Time Standard edition are supported. Full reporting is provided.

Data is organized by Station, Part or Routine. Merging, Filtering, What-if scenarios and advanced statistical treatments are supported.

No.	Description
64AAB839R	MeasurLink 10 Process Analyzer Professional
64AAB839R-U	MeasurLink 10 Process Analyzer Professional Upgrade

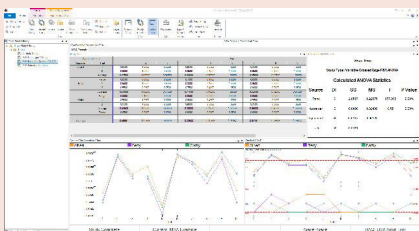


MeasurLink Process Manager Standard Edition

MeasurLink 10 Process Manager is a dashboard view of the current shop floor activity from a single computer. It displays those characteristics that are most in need of attention or adjustment.

The view automatically updates to show a current state of measurement activity.

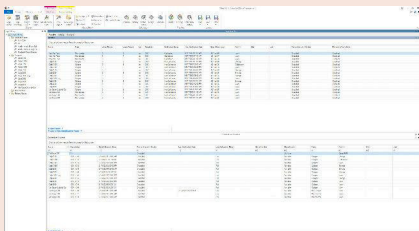
No.	Description
64AAB840R	MeasurLink 10 Process Manager
64AAB840R-U	MeasurLink 10 Process Manager Upgrade



MeasurLink Gage R&R

MeasurLink 10 Gage R&R is a collection of techniques whose purpose is to measure the capability of a measurement system for a measurement task.

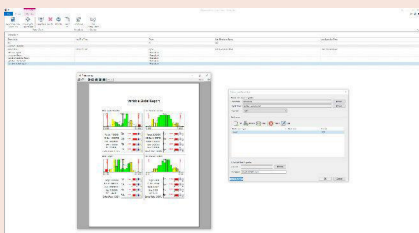
No.	Description
64AAB841R	MeasurLink 10 Gage R&R
64AAB841R-U	MeasurLink 10 Gage R&R Upgrade



MeasurLink Gage Management

MeasurLink 10 Gage Management is designed for Gage inventory management with Calibration procedures and recall methods.

No.	Description
64AAB842R	MeasurLink 10 Gage Management
64AAB842R-U	MeasurLink 10 Gage Management Upgrade



MeasurLink Report Scheduler V10

MeasurLink 10 Report Scheduler is a tool that can be used to schedule MeasurLink reports for print, export or email as Adobe PDF files.

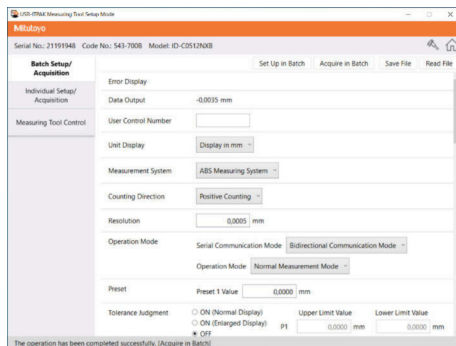
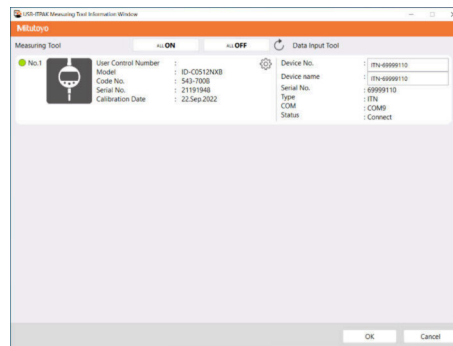
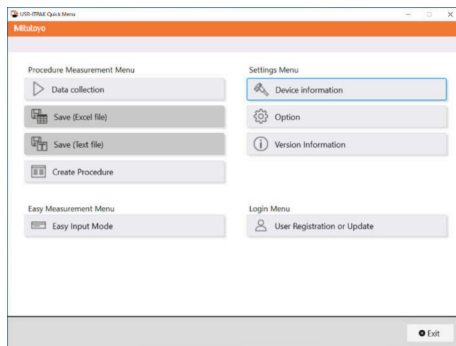
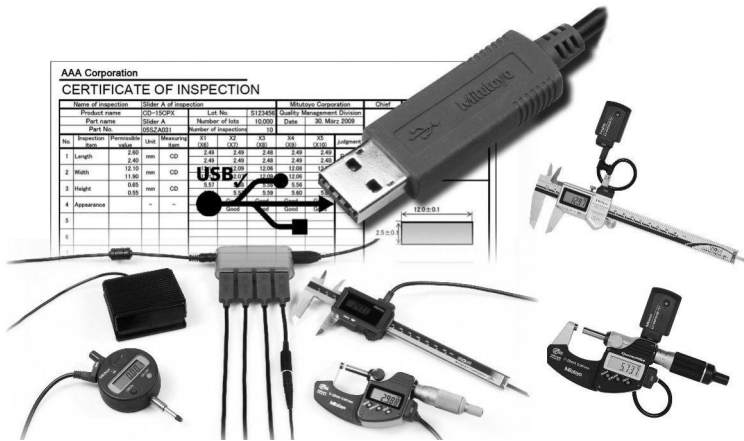
No.	Description
64AAB853R	MeasurLink 10 Report Scheduler
64AAB853R-U	MeasurLink 10 Report Scheduler Upgrade

USB-ITPAK

Series 06

USB-ITPAK Version 3 is software for collecting data from measuring instruments with Digimatic, Digimatic 2 and Digimatic S1 output to Excel by using USB Input Tool Interface, USB Input Tool Direct cables, U-WAVE wireless system and DP-1VA pinter/logger

- Supports bidirectional serial communication provided by e.g. ID-F/ ID-C Indicator (2022 model), Height Gauge LH-600F/FG and QuantuMike Micrometer (2024 model)
- Various settings are available like zero set, preset, unit, counting direction, tolerance setting, calibration date setting a.s.o.
- Measurement status information can be read like serial number, code number, calibration date, user control number a.s.o.
- USB-ITPAK Version 3 simple version is available online free of charge
- In order to use the full functionality of the software, no. 06AGR543 must be ordered
- Compatible OS Microsoft® Windows® 10 (64 bit) and 11
- For Microsoft® Excel® version 2010, 2013, 2016 and Microsoft 365



Specifications

OS compatibility	Windows® 10 (64bit), 11
Applicable MS Excel Version	Excel 2010/2013/2016/2021, MS 365
Language for display	English, German, French, Italian, Spanish, Turkish, Czech, Polish, Hungarian, Swedish, Russian, Japanese, Korean, Simplified Chinese, Traditional Chinese, Dutch, Portuguese

Functions	<ul style="list-style-type: none"> • Create Microsoft® Excel® input procedures (workbook, worksheet, cell range a.s.o.) • Bidirectional communication (Digimatic S1) compatible (Vers. 3 only) • Information reading of measuring tools e.g. serial number, code number etc. (Vers. 3 only) • Settings and operations of measuring tools e.g. preset, power ON/OFF, etc. (Vers. 3 only) • Enter measured data in the quick entry mode (Vers. 3 only) • Enter measured data in a specified sequence (sequential mode) • Enter measured data all at once (batch mode) • Enter measured data individually (individual mode) • Automatically enter measurement data periodically • Enter a string with your foot • Enter measurement data with foot switch, keyboard/mouse, data switch • Enter data into an arbitrary application • Enter log data from DP-1VA LOGGER
-----------	---

Delivered	License key (software can be downloaded from our website)
-----------	---

No.	Remarks
06AGR543	Version 3 can be used for Wireless Communication (U-WAVE and U-WAVE Bluetooth), USB Input Tool Direct Cable, USB-Input Tool No. 264-16-10 and 264-20 and DP-1 VA printer/logger. Supports bidirectional serial communication provided by e.g. ID-F/ ID-C Indicator (2022 model), LH-600 F/FG and QuantuMike Micrometer (2024 model).

USB-ITPAK

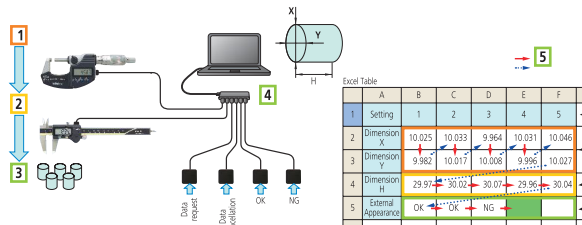
Optional accessories

No.	Description
06AFM380A	USB Input Tool Direct (Digimatic to USB), 2m Cable, Digimatic/Digimatic 2, with Data Button IP Caliper Type
06AFM380B	USB Input Tool Direct (Digimatic to USB), 2m Cable, Digimatic/Digimatic 2, with Data Button IP Micrometer Type
06AFM380C	USB Input Tool Direct (Digimatic to USB), 2m Cable, Digimatic/Digimatic 2, Straight, with Data Button
06AFM380D	USB Input Tool Direct (Digimatic to USB), 2m Cable, Digimatic/Digimatic 2, Flat 10-Pin Type
06AFM380E	USB Input Tool Direct (Digimatic to USB), 2m Cable, Digimatic/Digimatic 2, Round 6-Pin Type
06AFM380F	USB Input Tool Direct (Digimatic to USB), 2m Cable, Digimatic/Digimatic 2, Flat Straight Type
06AFM380G	USB Input Tool Direct (Digimatic to USB), 2m Cable, Digimatic/Digimatic 2, Flat Straight for ID-N/ID-B
06AGQ001F	USB Input Tool Direct (Digimatic to USB), 2m Cable, Digimatic/Digimatic 2/ Digimatic S1 Interface
06AGQ001A	USB Input Tool Direct (Digimatic USB), 2m, Digimatic/ Digimatic 2/ Digimatic S1 Interface, IP Type
06ADV384	USB Input Tool Direct, Footswitch Adapter
264-020	USB Input Tool Interface Box, Digimatic/ Digimatic 2/Digimatic S1 Interface
264-623	U-WAVE fit, Buzzer Type, Wireless Transmitter for Micrometer/Indicator
264-622	U-WAVE fit, IP67 Type, Wireless Transmitter for Micrometer/Indicator
264-621	U-WAVE fit, Buzzer Type, Wireless Transmitter for Caliper
264-620	U-WAVE fit, IP67 Type, Wireless Transmitter for Caliper
02AZD730G	U-WAVE-T, IP67 Type, Wireless Transmitter
02AZD880G	U-WAVE-T, Buzzer Type, Wireless Transmitter
264-627	U-WAVE fit Bluetooth, Buzzer Type, Wireless Transmitter for Micrometer/ Indicator
264-626	U-WAVE fit Bluetooth, IP67 Type, Wireless Transmitter for Micrometer/Indicator
264-625	U-WAVE fit Bluetooth, Buzzer Type, Wireless Transmitter for Caliper
264-624	U-WAVE fit Bluetooth, IP67 Type, Wireless Transmitter for Caliper
264-505D	Statistic Processing Printer DP-1VA, Data Printer and Logger CEE Type

Inspection item	Size A	Size B	Size C	Size D	Appearance
Measuring item	ID	ID	ID	ID	ID
Tolerance	Maximum limit				Good :1
	Minimum limit				No good:-1
Result of inspection	Sample 1				
	Sample 2				
	Sample 3				
	Sample 4				
	Sample 5				
	Sample 6				
	Sample 7				
	Sample 8				
	Sample 9				
	Sample 10				
Average (Av.)					-
standard deviation (σ)					-
Av.+3σ					-
Av.-3σ					-
MAX-(Av.+3σ)					-
(Av.-3σ)-MIN					1
Overall judgment	Passed	【Special note】			

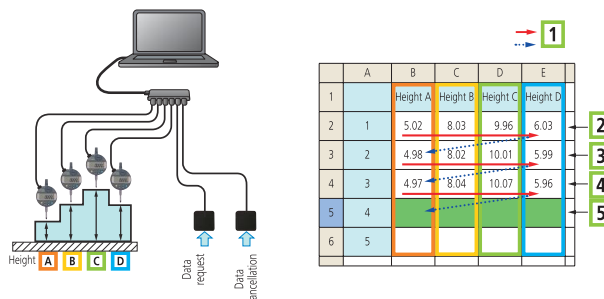
Mitutoyo Corporation N-0315

Microsoft® Excel® Worksheet waiting for data



Sequential Measurement

- 1: Micrometer for diameters X and Y
- 2: Caliper for height measurement H
- 3: Inspection by attributes OK/NG with foot switch e.g. scratches in the surface
- 4: standard USB-HUB
- 5: Measurement direction
- 6: Workpiece No.
- 7: Measuring result X/Y
- 8: Measuring result H
- 9: OK/NG judgement (e.g. scratches)



Simultaneous Measurement

- 1: Measurement direction
- 2: First measurement: press foot switch once = 4 complete data batches
- 3: second measurement: press foot switch once = 4 complete data batches
- 4: third measurement: press foot switch once = 4 complete data batches
- 5: is waiting for the next batch measurement

Digimatic Mini Processor DP-1VA LOGGER

Series 264

This DP-1VA printer allows you to print measuring data, statistical evaluations a.s.o.

- Digimatic 2 support. 8 digits output for data printing and analysis even from high resolution or long stroke instruments.
- Statistical evaluations, and data printout from calipers, micrometers and other measuring devices equipped with a Digimatic port.
- Excellent printing speed, prints upon one-touch start and at low noise level. The thermosensitive paper has outstanding durability and chemical resistance for long-term storage.
- Timer function for timed measurement data loading
- Easy data transfer from printer to PC. USB (VCP/HID) output for PC (USB IT-PAK Vers. 2.1 or later, MeasurLink, Excel a.s.o.)
- Data Logger Function. Saves up to 1000 data records with time and date. Data can be saved even after the power is turned off.



264-506D

No.	Mass [g]
264-506D	390

Mitutoyo
* DP-1VA *
* MODE 1 *

DATE 2018 / 2/27
TIME 10:43

LIMIT DATA 1

LSL	26.44	mm
USL	27.00	mm
TOL	0.56	mm

1	27.02	mm
2	26.43	mm
3	26.42	mm
4	26.56	mm
5	26.56	mm
6	26.83	mm
7	26.82	mm
8	26.48	mm
9	26.48	mm
10	26.70	mm

PART NO. :
DATE 2018 / 2/27
TIME 10:43
NAME :
* RESULT *
N 10
MAX 27.02 mm
MIN 26.42 mm
R 0.86 mm
σ 0.1673 mm
σn-1 0.1784 mm
-NG 2
+NG 1
CP 30.000 %
CPK 0.523

* HISTOGRAM *

LSL	26.44	mm
USL	27.00	mm
TOL	0.56	mm

DIV 10
-NG 2.00
+NG 0.00
CPK 0.523
D- 1
A 26.4400 mm
B 26.4860 mm
C 26.5320 mm
D 26.6079 mm
E 26.6838 mm
F 26.7199 mm
G 26.7759 mm
H 26.8319 mm
I 26.8879 mm
J 26.9439 mm
K 27.0000 mm

Mode 0

GO/±NG judgment

N : Number of data
MAX : Maximum value
MIN : Minimum value
R : Range
X̄ : Average value
σn-1 : Standard deviation of the sample (N-1)
σn-1 : Sample standard deviation (N-1)
-NG : Number of data smaller than lower limit value
+NG : Number of data larger than upper limit value
P : Fraction defective
Cp : Process capability index
Cpk : Process capability index (process target centered)

Modes 1,2

Mitutoyo
* DP-1VA *
* MODE 2 *

DATE 2018 / 2/27
TIME 10:44

LIMIT MODE

LIMIT DATA 1

NO LIMIT DATA

LIMIT1 26.86 mm

LIMIT2 27.44 mm

NEW LIMIT DATA

LIMIT DATA 1

DATE 2018 / 2/27
TIME 10:44

LSL	26.86	mm
USL	27.44	mm
TOL	0.58	mm

L 27.41 mm
C 27.31 mm
U 27.51 mm
27.38 mm
27.07 mm
27.09 mm
27.14 mm
27.14 mm
27.17 mm
27.35 mm
10
27.35 mm
27.35 mm
27.42 mm
27.47 mm
27.49 mm
27.49 mm

PART NO. :
DATE 2018 / 2/27
TIME 10:44
NAME :
* RESULT *

Mode 3

Mitutoyo
* DP-1VA *
* MODE 3 *

DATE 2018 / 2/27
TIME 10:45

SUB GR. NO. 1

1	27.54	mm
2	26.30	mm
3	27.21	mm
4	26.55	mm
5	27.43	mm
6	27.94	mm
7	27.27	mm

X̄ 27.7914 mm
R 1.08 mm
PART NO. :
DATE 2018 / 2/27
TIME 10:45
NAME :

SUB GR. NO. 2

1	28.29	mm
2	28.07	mm
3	26.86	mm
4	29.20	mm
5	26.59	mm
6	30.11	mm
7	30.78	mm

X̄ 29.2343 mm
R 2.71 mm
PART NO. :
DATE 2018 / 2/27
TIME 10:45
NAME :

CONTROL LIMIT

DATE 2018 / 2/27
TIME 10:45

NO. OF SUB GR.	2
SAMPLE SIZE	7

X̄-UCL	28.5129	mm
X̄-LCL	26.3069	mm
R-UCL	27.7188	mm
R-LCL	1.8950	mm

Specifications

Power supply	AC adapter 6V, battery: LR6 x 4 (alkaline) or AA x 4 Ni-MH (rechargeable, battery is not charged in the device)
Data input	Digimatic, Digimatic 2, RS-232C Input (KA-Counter only)
Printer type	Thermal line printer
Printer speed	6,5 mm/s (using AC adapter)
Printer line number	7000 lines/roll (with large font) 10000 lines/roll (with normal font)
Printer paper	Width: 58 mm, length: 48 m
Processing capacity	Mode 0: 100000 data entries Mode 1/2: 9999 data entries Mode 3: sample size 10x subgroup 9999 = total number of data entries 99990
Logging of the measurement data (to store)	Max. 1000 points
Data output	USB, RS-232C at TTL level, tolerance judgment result (-NG, GO, +NG)
Battery life	Appr. 10000 lines (with 1600 mA Ni-MH and print 1 time/5 s)
Timer function	0,25 s; 1 s; 5 s; 30 s; 1 min; 30 min; 60 min (0,25 s only statistical function)
Delivered	With AC adapter, printer paper (1 roll), strap

Standard accessories

No.	Description
06AGZ369D	AC-Adapter, DC 6V 2A, CEE version Germany (Europe)
09EAA069D	Thermal Printer Paper DP1-VR-VA, 1 Roll

Optional accessories

No.	Description
06AGR543	USB-ITPAK Vers. 3.0, USB Dongle + Manual (Software available Online)
09EAA084	RS-232C Cable, DP-1VR/VA to PC, 1m, 9 Pin Connector
06AFZ050	USB Cable 1m, DP-1VA to PC etc., USB Type A to Micro USB Type B Plug
965516	GO/±NG judgement cable, for external device, 2m
09EAA094	RS-232C Cable, DP1-VR-VA to KA-Counter, 1m, 25 Pin Connector
937179T	Footswitch for SPC
09EAA082-5	Thermal Printer Paper DP1-VR-VA, 5 Rolls
011037	Battery, LR6, 1,5V, 4 pcs.

09EAA084 and 965516 can not be used simultaneously.

USB Input Tool Direct (Digimatic-USB Cable)

Specifications

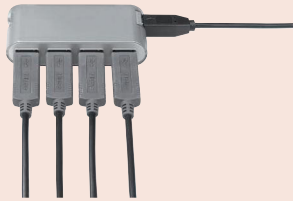
Cable length	2 m
Output	USB: HID (keyboard format) or VCP (virtual COM-Port)
Max connectable devices	20 cables

Optional accessories

No.	Description
06AGR543	USB-ITPAK Vers. 3.0, USB Dongle + Manual (Software available Online)
06ADV384	USB Input Tool Direct, Footswitch Adapter
937179T	Footswitch for SPC



937179T and 06ADV384



Common USB Hub



06AFM380A

06AFM380B



06AFM380C

06AFM380D



06AFM380E

06AFM380F



06AFM380G



06AGQ001F

06AGQ001A



Scan QR Code with your mobile device and watch our product videos on YouTube

For more information about cable connectors see the end of this chapter.

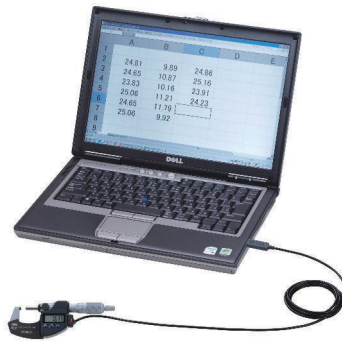
Digimatic-USB Cable

This input tool allows you to directly connect Digimatic measuring devices to the USB interface of a PC, without needing additional software. Measurement data is then converted into keyboard codes, enabling interaction with any software such as Microsoft® Excel® working with keyboard entries (HID).

When using the VCP (virtual COM-Port) driver which is part of USB-ITPAK Vers. 3 (easy input mode version), a fixed COM-Port assignment in Microsoft® Windows® is possible. A VCP can be used e.g. for professional SPC software like Mitutoyo MeasurLink. The driver is available online, free of charge.

The following additional features are made available by adding the optional USB-ITPAK Vers. 3 (full version) to your workstation:

- Creation of worksheets and multi-channel input for measurement values to Microsoft® Excel®
- Automatic calling of said Excel® sheet for data input
- Cursor movement after data input can be set to enable automatic input
- Configuration of measuring methods, such as sequential measurement, batch measurement, individual measurement, and more
- Timed data requests



06AFM380C

No.	Model	OS compatibility	Remarks
06AFM380A	A	Windows® 2000, XP, Vista, 7, 8/8.1, 10, 11	USB Input Tool Direct Cable Straight With Data Switch (2m), e.g. for IP67 Caliper
06AFM380B	B	Windows® 2000, XP, Vista, 7, 8/8.1, 10, 11	USB Input Tool Direct Cable Back Side With Data Switch (2m); e.g. for IP65 Micrometer
06AFM380C	C	Windows® 2000, XP, Vista, 7, 8/8.1, 10, 11	USB Input Tool Direct Cable Straight With Data Switch (2m); e.g. for Standard Absolute Caliper
06AFM380D	D	Windows® 2000, XP, Vista, 7, 8/8.1, 10, 11	USB Input Tool Direct Cable Plain (2m) e.g. for ID-H Indicator
06AFM380E	E	Windows® 2000, XP, Vista, 7, 8/8.1, 10, 11	USB Input Tool Direct Cable Round (2m) e.g. for Caliper Gauge Series 209
06AFM380F	F	Windows® 2000, XP, Vista, 7, 8/8.1, 10, 11	USB Input Tool Direct Cable Straight (2m) e.g. for ID-S Indicator
06AFM380G	G	Windows® 2000, XP, Vista, 7, 8/8.1, 10, 11	USB Input Tool Direct Cable ID-N/ID-B (2m)
06AGQ001A	SA	Windows® 10 (64 bit) / Windows® 11	USB Input Tool Direct Cable for QuantuMike (2024 model) with Digimatic S1 bidirectional interface
06AGQ001F	SF	Windows® 10 (64 bit) / Windows® 11	USB Input Tool Direct Cable for Linear Height LH-600 F/FG, Digital Indicator ID-F/ID-C (2022 model) with Digimatic S1 bidirectional interface

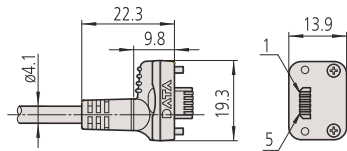
Digimatic Data Cables

Digimatic Cables

This is an overview of available data cables, and how you can connect measuring devices with data output e.g. to a PC.

The cables listed are used to connect the measuring devices directly via USB (USB Input Tool Direct Cables), indirectly via standard Digimatic cables and interface box (e.g. DMX box or USB Input Tool Box), or the U-WAVE-T wireless transmitters (box version) to a PC.

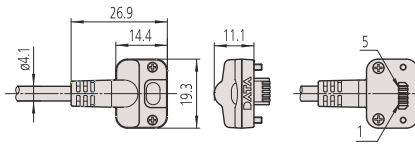
Please find the appropriate cable for your particular Digimatic measuring instrument in the "Optional Accessories" section of its product entry.



(1) 06AFM380A

(2) 05CZA624 (1 m), 05CZA625 (2 m)

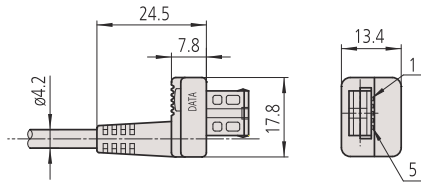
(3) 02AZD790A (Standard), 02AZE140A (FSW)



(1) 06AFM380B

(2) 05CZA662 (1 m), 05CZA663 (2 m)

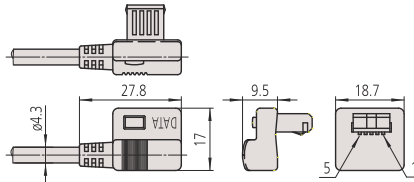
(3) 02AZD790B (Standard), 02AZE140B (FSW)



(1) 06AFM380C

(2) 959149 (1 m), 959150 (2 m)

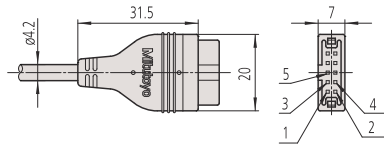
(3) 02AZD790C (Standard), 02AZE140C (FSW)



(1) No applicable Models

(2) 04AZB512 (1 m), 04AZB513 (2 m)

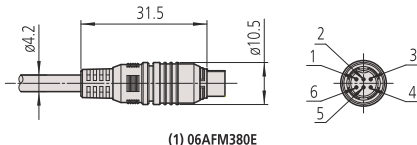
(3) No applicable Models



(1) 06AFM380D

(2) 936937 (1 m), 965014 (2 m)

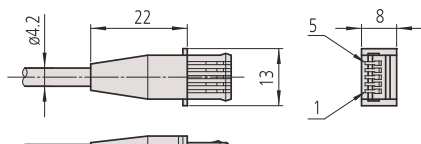
(3) 02AZD790D (Standard), 02AZE140D (FSW)



(1) 06AFM380E

(2) 937387 (1 m), 965013 (2 m)

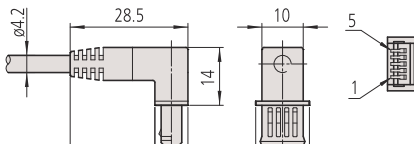
(3) 02AZD790E (Standard), 02AZE140E (FSW)



(1) 06AFM380F

(2) 905338 (1 m), 905409 (2 m)

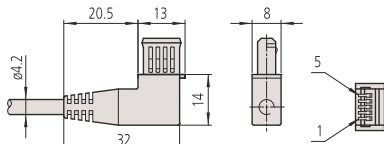
(3) 02AZD790F (Standard), 02AZE140F (FSW)



(1) No applicable Models

(2) 905689 (1 m), 905690 (2 m)

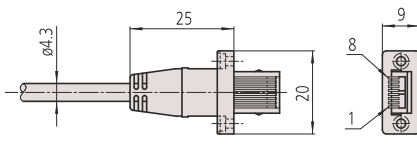
(3) No applicable Models



(1) No applicable Models

(2) 905691 (1 m), 905692 (2 m)

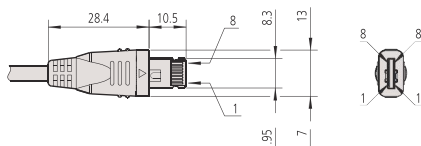
(3) No applicable Models



(1) 06AFM380G

(2) 21EAA194 (1 m), 21EAA190 (2 m)

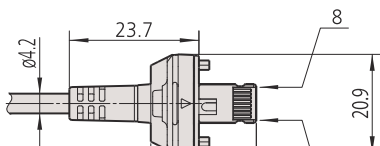
(3) 02AZD790G (Standard), 02AZE140G (FSW)



(1) 06AGQ001F

(2) 06AGL011 (1 m), 06AGL021 (2 m)

(3) 02AZG011 (Standard), 02AZG021 (FSW)



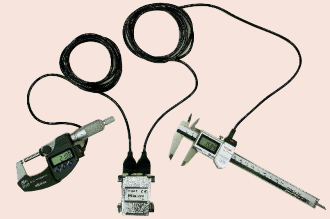
(1) 06AGQ001A

(2) 06AGL111 (1 m), 06AGL121 (2 m)

(3) No applicable Models



(1)
USB Input Tool Direct Cable
2 m



(2)
Standard Digimatic Cable
1 m or 2 m



(3)
U-WAVE Connection Cable
(Standard)



(3)
U-WAVE Connection Cable
with Footswitch Connector
(FSW)

Digimatic Extension Cables

Optional accessories

No.	Description
936937	Digimatic Cable, Flat 10-Pin Type, 1 m
965014	Digimatic Cable, Flat 10-Pin Type, 2 m

Extension Cables for Digimatic Cables

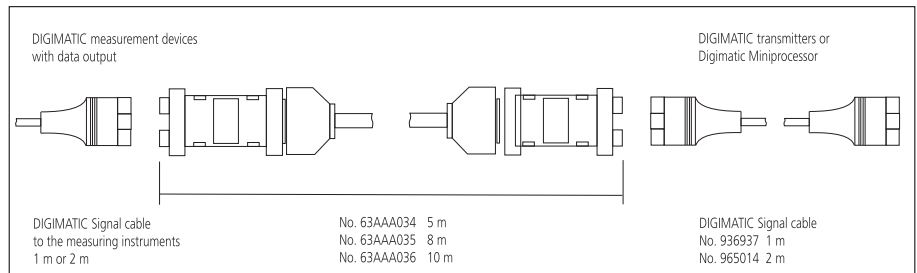
These extension cables allow you to extend Digimatic data cables up to 14 m, extending the working distance between a measuring instrument and an external device such as a PC or DP-1VA Logger/Printer.



63AAA036

Digimatic Extension Cable

No.	Length [m]
63AAA034	5
63AAA035	8
63AAA036	10



U-WAVE Bluetooth

U-WAVE fit Bluetooth

- Bluetooth® communication allows for wireless transmission of measurement data from digimatic micrometers and calipers to PCs, smartphones, tablets, and other terminals alike.
- U-WAVE is now available with Bluetooth® wireless technology. With no receiver required, one PC can connect up to seven units with Mitutoyo U-WAVE Bluetooth®. For tougher shop floor usage, dust / water-proof models are also available.
- Bluetooth® communication not only allows for cost reduction, as it does not require the conventional dedicated receiver unit, but it also improves operability.
- Communication distance of approx. 16 m in an open space and approx. 10 m in a factory environment.
- The application software for transferring measurement data to smartphones, tablets, or PCs

U-WAVEPAK-BM

Available for both Android and iOS, U-WAVEPAK-BM provides users to make use of simple process control with its measurement data import function.

U-WAVEPAK-BW

For use on computers, U-WAVEPAK-BW communicates directly with your measuring instrument, allowing you to transfer measurement data to your computer's software. This software can be downloaded for free on our company's website.



264-626 + 02AZF310
U-WAVE-TMB + Connection Unit



264-625 + 02AZF310
U-WAVE-TCB + Connection Unit

U-WAVE Bluetooth (Transmitter)

No.	Type	Measuring Instruments	Data reception indication	Remarks	Mass [g]
264-624	U-WAVE-TCB (U-WAVE fit Bluetooth)	100, 150, 200, 300 mm IP67 caliper/standard caliper	LED (green, red, orange)	IP67	20
264-625	U-WAVE-TCB (U-WAVE fit Bluetooth)	100, 150, 200, 300 mm IP67 caliper/standard caliper	Buzzer and LED (green, red, orange)	Standard	20
264-626	U-WAVE-TMB (U-WAVE fit Bluetooth)	COOLANT PROOF (IP65) micrometer, indicator	LED (green, red, orange)	IP67	20
264-627	U-WAVE-TMB (U-WAVE fit Bluetooth)	COOLANT PROOF (IP65) micrometer, indicator	Buzzer and LED (green, red, orange)	Standard	20

For details of connectable measuring instruments please contact Mitutoyo or distributor



Specifications

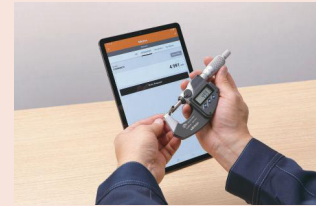
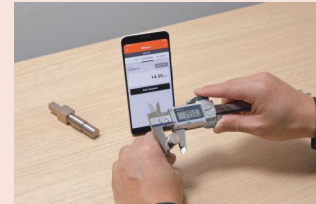
Wireless communication protocol	Bluetooth 4.2 Low energy
Modulation method	FH-SS (frequency-hopping spread spectrum)
Communication distance	Approx. 16 m (line of sight) Approx. 10 m (in factory environment)
Communication with measuring tool	Digimatic (6 digits), Digimatic 2 (8 digits) automatic identification
Transmission output	3,2 mW (5 dBm) or less (Class 2)

Standard accessories

No.	Description
055AA217D	Lithium battery CR-2032, 1 pcs.

Optional accessories

No.	Description
06AGR543	USB-ITPAK Vers. 3.0, USB Dongle + Manual (Software available Online)
02AZF300	Connection Unit for Standard Caliper, with Data Button for U-WAVE fit, U-WAVE fit Bluetooth
02AZF310	Connection Unit for IP Caliper, Micrometer, with Data Button for U-WAVE fit, U-WAVE fit Bluetooth
02AZF960	Connection Unit for IP Micrometer, U-WAVE fit, U-WAVE fit Bluetooth for Digimatic S1 Interface
02AZF700	Connection Unit for ID-C Indicator, 12,7mm/0,5" Type, U-WAVE fit, U-WAVE fit Bluetooth for Digimatic S1 Interface



U-WAVEPAK-BM
available on App Store and Google Play

Specifications

Wireless communication protocol	Proprietary (2,4 GHz by original specification based on IEEE 802.15.4)
Modulation method	DS-SS (Direct Sequence Spread Spectrum)
Communication distance	Approx. 20 m (within visible range)
Communication speed kbps	250
Communication frequency	2,4 GHz band (2,405-2,475 GHz, 15 channels (5 MHz interval))
Communication with measuring tool	Digimatic (6 digits), Digimatic 2 (8 digits) automatic identification
OS compatibility	Windows® 2000 Professional (≥SP4), Windows® XP Professional (≥SP2), Windows® XP Home Edition (≥SP2), Windows Vista®, Windows® 7 (32bit, 64bit), Windows® 8, 8.1, 10 (32bit, 64bit), 11

Standard accessories

No.	Description
055AA217D	Lithium battery CR-2032, 1 pcs.

U-WAVE

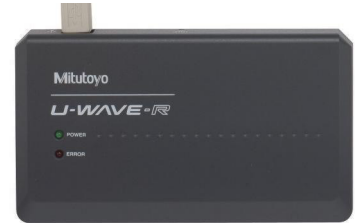
U-WAVE and U-WAVE fit - Wireless Data transmission system



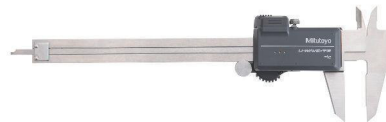
- Approx. 20 m (within visible range).
- Communication frequency: 2.4GHz wireless system for reliable and secure data transmission.
- Easy data export to Easy data export to Microsoft® Excel® or other professional SPC software applications like Mitutoyo MeasurLink.
- Transmitter confirms data transfer by a buzzer sound or a red/green LED signal.
- Low power consumption: 400000 data transmissions with one battery.
- U-WAVE Event will also support a data request from a PC. This is ideal if the system is installed at an inaccessible side.



PC with U-WAVE-R (Receiver)



02AZD810D
U-WAVE-R (Receiver)



For Caliper U-WAVE-TC (U-WAVE fit transmitter) with Connection Unit



For Micrometer U-WAVE-TM (U-WAVE fit transmitter) with Connection Unit



U-WAVE (Transmitter)

No.	Type	Measuring Instruments	Data reception indication	Transmission output	Remarks	Mass [g]
264-620	U-WAVE-TC (U-WAVE fit)	100, 150, 200, 300 mm IP67 caliper/standard caliper	LED (green, red, orange)	2,5 mW (4 dBm) or below	IP67	20
264-621	U-WAVE-TC (U-WAVE fit)	100, 150, 200, 300 mm IP67 caliper/standard caliper	Buzzer and LED (green, red, orange)	2,5 mW (4 dBm) or below	Standard	20
264-622	U-WAVE-TM (U-WAVE fit)	COOLANT PROOF (IP65) micrometer, indicator	LED (green, red, orange)	2,5 mW (4 dBm) or below	IP67	20
264-623	U-WAVE-TM (U-WAVE fit)	COOLANT PROOF (IP65) micrometer, indicator	Buzzer and LED (green, red, orange)	2,5 mW (4 dBm) or below	Standard	20
02AZD730G	U-WAVE-T for miscellaneous instruments	Indicator, 3-Point Inside Micrometer, Carbon Fibre Caliper, Height Gauge, a.s.o	LED (green, red, orange)	2,5 mW (4 dBm) or below	IP67	23
02AZD880G	U-WAVE-T for miscellaneous instruments	Indicator, 3-Point Inside Micrometer, Carbon Fibre Caliper, Height Gauge, a.s.o	Buzzer and LED (green, red, orange)	2,5 mW (4 dBm) or below	Standard	23

U-WAVE-R (Receiver) for all Mitutoyo U-WAVE Transmitter (except U-WAVE Bluetooth)

No.	Type	Number of U-WAVE-R units that can be connected to PC	Number of U-WAVE-T units that can be connected	Transmission output	Remarks	Mass [g]
02AZD810D	U-WAVE-R	Up to 16	Up to 100	1 mW (0 dBm) or below	Setup software (U-WAVEPAK) is available online	130

U-WAVE



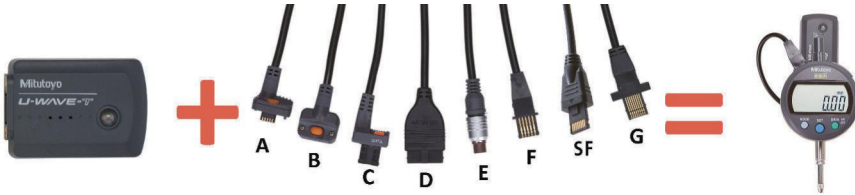
For miscellaneous measuring instruments U-WAVE-T (Transmitter) with Connection Cable



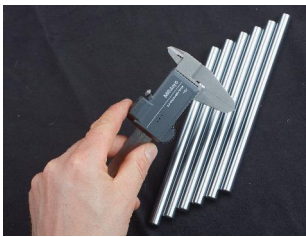
Transmitter and Connection Unit (see next page) for Caliper (U-WAVE-TC + 02AZF300)



Transmitter and Connection Unit (see next page) for Micrometer (U-WAVE-TM + 02AZF310)



Transmitter and Connection Cables (see next page) e.g. for Digital Indicator



264-620 + 02AZF310
U-WAVE-TC (Transmitter) + Connection Unit



264-622 + 02AZF310
U-WAVE-TM (Transmitter) + Connection Unit



02AZD730G + 02AZD790A
U-WAVE-T (Transmitter) + Connection Cable

Optional accessories

No.	Description
06AGR543	USB-ITPAK Vers. 3.0, USB Dongle + Manual (Software available Online)
02AZF300	Connection Unit for Standard Caliper, with Data Button for U-WAVE fit, U-WAVE fit Bluetooth
02AZF310	Connection Unit for IP Caliper, Micrometer, with Data Button for U-WAVE fit, U-WAVE fit Bluetooth
02AZF960	Connection Unit for IP Micrometer, U-WAVE fit, U-WAVE fit Bluetooth for Digimatic S1 Interface
02AZF700	Connection Unit for ID-C Indicator, 12,7mm/0,5" Type, U-WAVE fit, U-WAVE fit Bluetooth for Digimatic S1 Interface
02AZD790A	Connection Cable A for U-WAVE, with Data Button for IP Caliper Type
02AZD790B	Connection Cable B for U-WAVE, with Data Button for IP Micrometer Type
02AZD790C	Connection Cable C for U-WAVE, Straight, with Data Button
02AZD790D	Connection Cable D for U-WAVE, Flat 10-Pin Type
02AZD790E	Connection Cable E for U-WAVE, Round 6-Pin Type
02AZD790F	Connection Cable F for U-WAVE, Straight, without Data Button
02AZD790G	Connection Cable G for U-WAVE, for IP66 Indicators ID-N and ID-B
02AZG011	Connection Cable SF for U-WAVE, for U-WAVE-T and Instruments with Digimatic S1 Interface
63BAA057	U-WAVE T External Power Supply Adapter
02AZF670	U-WAVE fit Transmitter Mounting Plate, for ID-C, ID-S and ID-F Digital Indicator
02AZF675	U-WAVE fit Transmitter Mounting Plate, for ID-N Digital Indicator
02AZE200	U-WAVE Transmitter Mounting Plate, Universal Type
02AZE990	U-WAVE Transmitter Mounting Plate, for QM-Height
12AAY486	U-WAVE-T Transmitter Mounting Plate, for LH-600F/FG

U-WAVE Connection Cables and Connection Units

Standard accessories

No.	Description
05CZA619	Screw Driver

Optional accessories

No.	Description
02AZE200	U-WAVE Transmitter Mounting Plate, Universal Type
02AZF670	U-WAVE fit Transmitter Mounting Plate, for ID-C, ID-S and ID-F Digital Indicator
02AZF675	U-WAVE fit Transmitter Mounting Plate, for ID-N Digital Indicator
02AZE990	U-WAVE Transmitter Mounting Plate, for QM-Height
12AAY486	U-WAVE-T Transmitter Mounting Plate, for LH-600F/FG

Connections Transmitter and Instrument

- This connecting part connects a measuring tool to its U-WAVE unit. Choose the appropriate connection unit or cable for your measuring tool.



Connection unit 02AZF300/ 02AZF310 for U-WAVE fit transmitter (optional)



Connection unit 02AZF700 for U-WAVE fit transmitter (optional)



Connection cable without foot switch connector and transmitter (optional)



Connection cable with foot switch connector and transmitter + foot switch (optional)

1. Connection Unit for U-WAVE fit and U-WAVE fit Bluetooth

No.	Remarks	Mass [g]
02AZF300	For U-WAVE-TC and U-WAVE TCB Transmitter e.g. for ABS AOS Standard Caliper	6
02AZF310	For U-WAVE-TC/U-WAVE-TCB and U-WAVE-TM/U-WAVE-TMB e.g. IP67 Caliper, COOLANT PROOF (IP65) Micrometer	6
02AZF700	For U-WAVE-TM and U-WAVE TMB Transmitter and Digital Indicator ID-C/ID-F 12,7 mm/0,5" range (2022 model)	10
02AZF960	For U-WAVE-TM and U-WAVE-TMB Transmitter and Outside Micrometer QuantuMike (2024 model)	14

U-WAVE Connection Cables and Connection Units

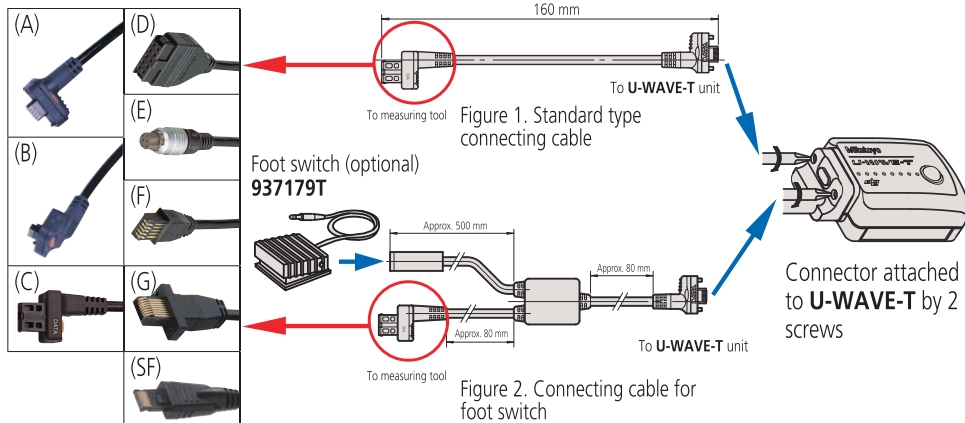
2. Connection cable without foot switch connector

No.	Model	Remarks	Mass [g]
02AZD790A	A	IP U-WAVE Data Cable Straight with Data Switch e.g. for IP66 Carbon Fibre Caliper	10
02AZD790B	B	IP U-WAVE Data Cable Back Side with Data Switch e.g. for IP65 Holtest	10
02AZD790C	C	U-WAVE Data Cable Straight with Data Switch e.g. for Height Gauge	10
02AZD790D	D	U-WAVE Data Cable Plain e.g. for ID-H/ID-F Indicator	10
02AZD790E	E	U-WAVE Data Cable Round e.g. for Digital Caliper Gauge Series 209	10
02AZD790F	F	U-WAVE Data Cable Straight e.g. for ID-C/ID-S Indicator	10
02AZD790G	G	IP U-WAVE Data Cable e.g. for ID-N/ID-B Indicator	10
02AZG011	SF	U-WAVE Data Cable Straight for Instruments with Digimatic S1 Interface e.g. for ID-C, ID-F Indicator and LH-600F/FG	10

3. Connection cable with foot switch connector

No.	Model	Remarks	Mass [g]
02AZE140A	A	IP U-WAVE Data Cable Straight with Data Switch/Foot Switch Connector e.g. for IP66 Carbon Fibre Caliper	34
02AZE140B	B	IP U-WAVE Data Cable Back Side with Data Switch/Foot Switch Connector e.g. for IP65 Holtest	34
02AZE140C	C	U-WAVE Data Cable Straight with Data Switch/Foot Switch Connector e.g. for Height Gauge	34
02AZE140D	D	U-WAVE Data Cable Plain with Foot Switch Connector e.g. for ID-H/ID-F Indicator	34
02AZE140E	E	U-WAVE Data Cable Round with Foot Switch Connector e.g. for Digital Caliper Gauge Series 209	34
02AZE140F	F	U-WAVE Data Cable Straight with Foot Switch Connector e.g. for ID-C/ID-S Indicator	34
02AZE140G	G	IP U-WAVE Data Cable with Foot Switch Connector e.g. for ID-N/ID-B Indicator	34
02AZG021	SF	U-WAVE Data Cable Straight with Foot Switch Connector for Instruments with Digimatic S1 Interface e.g. for ID-C, ID-F Indicator and LH-600F/FG	35

8 types of connector



For more information about cable ends see page 21



02AZE200
U-WAVE-T
02AZD790F



02AZF670
U-WAVE-TM
02AZD790F

02AZF675
U-WAVE-TM
02AZD790G



02AZE990
U-WAVE-T
02AZD790D



12AAY486
U-WAVE-T
02AZG011

USB Input Tool

Series 264 - Keyboard Interface

The input tool allows you to directly connect Digimatic measuring devices to a USB interface, without needing additional software.

The USB Input Tool Direct offers the following benefits:

- Measurement data is converted into keyboard codes, enabling interaction with any program working with keyboard entries. (HID)
- You can also connect to a USB with fixed COM assignment in Microsoft Windows as a channel identification (VCP).
- The driver for creating the VCP is part of USB-ITPAK and is available online.
- The USB-ITPAK software lets you easily create Microsoft Excel worksheets.

Specifications

Dimensions (WxDxH)	38 x 64 x 21 mm
Power supply	5 V from the USB
Max. connectable devices	Microsoft® Windows® 2000, XP: 100 cables, Windows® Vista®, 7, 8, 8. 1, 10, 11: 20 cables
OS compatibility	Microsoft® Windows® 2000, XP, Vista®, 7, 8, 8. 1, 10 (32bit, 64bit), 11
Delivered	with 1 m USB cable

Optional accessories

No.	Description
06AGR543	USB-ITPAK Vers. 3.0, USB Dongle + Manual (Software available Online)
937179T	Footswitch for SPC

	A	B	C	D	E
1	Height	Diameter 1	Diameter 2		
2	0.000	0.000	0.000		
3	2.734	5.031	13.526		
4	2.700	5.036	13.525		
5	2.701	5.036	13.525		
6	2.701	5.037	13.525		
7	2.702	5.037	13.525		
8	2.702	5.037	13.433		
9	2.702	5.037	13.432		
10	2.701	4.940	13.432		
11	2.357	4.940	12.129		



264-020

No.	Data output	Data input	Output decimal mark	Footswitch connector	Mass [g]
264-020	USB Virtual COM-Port (VCP) with VCP driver (available online). USB keyboard signal (HID)	1x Digimatic, Digimatic 2 or Digimatic S1	Emulates the local Windows setting	Yes	54

DMX-3T / FS2 USB

Series 63 - Keyboard Interface

- The DMX-3 T/FS2 USB is a keyboard interface that transmits measurement data from measuring instruments equipped with Digimatic interfaces to a PC. Measurement data is converted into keyboard codes, allowing you to easily access it with any program working with keyboard entries, regardless of the operating system. The USB and data conversation interfaces also allow you to directly input the measurement data into a spreadsheet.

Specifications

Power supply	5 V from the USB
Dimensions (WxDxH)	112 x 122 x 45 mm
Timer function	0-99 s (1s step) or 0-99 min
OS compatibility	Microsoft® Windows® 2000, XP, Vista®, 7, 8, 8. 1, 10 (32bit, 64bit), 11
Delivered	with 1,8 m USB cable

Optional accessories

No.	Description
63AAA105	Link Cabel DMX-3T/FS2
937179T	Footswitch for SPC

	A	B	C	D	E
1	Height	Diameter 1	Diameter 2		
2	0.000	0.000	0.000		
3	2.734	5.031	13.526		
4	2.700	5.036	13.525		
5	2.701	5.036	13.525		
6	2.701	5.037	13.525		
7	2.702	5.037	13.525		
8	2.702	5.037	13.433		
9	2.702	5.037	13.432		
10	2.701	4.940	13.432		
11	2.357	4.940	12.129		



63AAA041



rear panel

No.	Data output	Data input	Output decimal mark	Footswitch connector	Mass [g]
63AAA041	USB keyboard signal (HID)	3 x Digimatic	point or comma (selectable)	Yes	330

DMX-1

Series 63

This D-SUB9 serial interface is a microcontrolled interface for connecting one single measurement device, with Digimatic output, to the RS-232C interface of a computer. It offers you the following benefits:

- Easily connect a measuring device to a computer's RS-232C serial port.
- No external power supply is needed, as the small level of power needed is supplied by the handshake lines RTS and DTR.

No.	Data input	Data output	Interface cable connection	Footswitch connector	Baud rate	Data bits	Stop bits	Parity
63AAA029	1 x Digimatic	RS-232C	D-SUB 9	Yes	9600	8	1	none

DMX-1 USB

Series 63

- The DMX-1 USB is a microcontrolled interface for connecting 1 Digimatic-output measurement device to the USB interface of a computer. The device appears as a virtual COM-PORT (VCP) to the computer.



63AAA040-1



rear panel

No.	Data output	Data input	Interface cable connection	Footswitch connector	Baud rate	Data bits	Stop bits	Parity
63AAA040-1	USB virtual COM-Port (VCP)	1 x Digimatic	USB Type Mini-B	No	9600	8	1	none

DMX-2 S

Series 63

This DMX-2 S D-SUB5 serial interface is a microcontrolled interface for connecting two measurement devices, with Digimatic output, to the RS-232C serial port of a computer. The DMX-2 S offers the following benefits:

- Easily connect two measuring devices to a computer's RS-232C serial port.
- No external power supply is needed, as the small level of power needed is supplied by the handshake lines RTS and DTR.



63AAA038

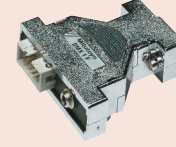
No.	Data input	Data output	Interface cable connection	Footswitch connector	Baud rate	Data bits	Stop bits	Parity
63AAA038	2 x Digimatic	RS-232C	D-SUB 25	Yes	9600	8	1	none

Specifications

Dimensions (WxDxH)	58 x 62 x 18 mm
--------------------	-----------------

Optional accessories

No.	Description
937179T	Footswitch for SPC
63AAA027	RS-232C Signal Cable, D-Sub9-D-Sub9, 2m



63AAA029

Specifications

Power supply	5 V from the USB
OS compatibility	Microsoft® Windows® 2000, XP, Vista®, 7, 8, 8.1, 10 (32bit, 64bit), 11
Dimensions (WxDxH)	33 x 57 x 20 mm
Delivered	with 1,8 m USB cable driver software available online

Optional accessories

No.	Description
937179T	Footswitch for SPC

Specifications

Dimensions (WxDxH)	58 x 62 x 18 mm
--------------------	-----------------

Optional accessories

No.	Description
937179T	Footswitch for SPC
63AAA108	RS-232C Signal Cable, D-Sub-25-D-Sub-9, 2m
63AAA028	Adapter D-Sub25-D-Sub9, 0,2m



Sample application with footswitch (optional accessory)

DMX-2 USB

Series 63

Connecting two measurement devices, with Digimatic-output, to a USB port.

The DMX-2 USB offers the following benefits:

- It appears either as a virtual COM-Port (VCP) or as a keyboard (HID) on the computer.
- It has a mode switch available to easily swap between keyboard format (HID) and virtual COM-Port (VCP).



63AAA037-1



rear panel

No.	Data input	Data output	Interface cable connection	Footswitch connector	Baud rate	Data bits	Stop bits	Parity
63AAA037-1	2 x Digimatic	USB virtual COM-Port (VCP) USB keyboard signal (HID) switchable on the box	USB Type Mini-B	Yes	9600	8	1	none

DMX-3 USB

Series 63

The DMX-3 is a 3 channel microcontrolled interface that connects three measurement devices, with Digimatic output, to either the RS-232C serial port or USB port of a computer.

The DMX-3 USB offers the following benefits:

- If the USB output is used, the measuring device will appear as a virtual COM-Port (VCP) on the computer.
- Power is supplied by an AC-Adapter, which is a standard accessory only required for serial cable D-SUB-9 connection.



63AAA039-1



rear panel

No.	Data input	Data output	Interface cable connection	Foot-switch connector	Baud rate	Data bits	Stop bits	Parity
63AAA039-1	3 x Digimatic	USB virtual COM-Port (VCP), RS-232C	Serial cable: D-SUB 9 or USB: Type B	Yes	1200 or 9600 (adjustable with jumper)	8	1	none

Specifications

Power supply	5 V from the USB
OS compatibility	Microsoft® Windows® 2000, XP, Vista®, 7, 8, 8.1, 10 (32bit, 64bit), 11
Output decimal mark (HID)	point or comma
Dimensions (WxDxH)	61 x 76 x 35 mm
Delivered	with 1,8 m USB cable driver software available online

Optional accessories

No.	Description
937179T	Footswitch for SPC

Specifications

Power supply	5 V from the USB or AC-Adapter (for serial connection)
OS compatibility	Microsoft® Windows® 2000, XP, Vista®, 7, 8, 8.1, 10 (32bit, 64bit), 11
Dimensions (WxDxH)	170 x 128 x 55 mm
Delivered	with 1,8 m USB cable driver software available online AC Adapter (only for serial cable connection)

Optional accessories

No.	Description
63AAA027	RS-232C Signal Cable, D-Sub9-D-Sub9, 2m
937179T	Footswitch for SPC

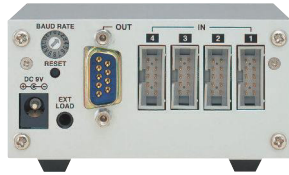
MUX-10F

Series 264

The MUX-10F is a 4 channel D-SUB 9 serial interface is a microcontrolled interface that connects four measurement devices, with Digimatic output, to the RS-232C serial port of a computer.



264-002D



rear panel

No.	Data input	Data output	Interface cable connection	Footswitch connector	Baud rate	Data bits	Stop bits	Parity
264-002D	4 x Digimatic	RS-232C	D-SUB 9	Yes	300, 600, 1200, 2400, 4800, 9600, 19200	8	1	none

DMX-8/2

Series 63

The DMX-8/2 is a 8 channel D-SUB9 microcontrolled serial interface for connecting eight measurement devices, with Digimatic output, to the RS-232C serial port of a computer. The DMX-8/2 model provides power and an ABS/Zero button to operate Series 575 ABS Linear Gauges.



63AAA033



rear panel

No.	Data input	Data output	Interface cable connection	Footswitch connector	Baud rate	Data bits	Stop bits	Parity
63AAA033	8 x Digimatic	RS-232C	D-SUB 9	Yes	9600	8	1	none

Specifications

Power supply	AC-Adapter, 9V 500mA
Dimensions (WxDxH)	91,4 x 92,5 x 50,4 mm
Delivered	with AC Adapter

Optional accessories

No.	Description
12AAA882D	RS-232C Signal Cable, D-Sub9-D-Sub9, 2m, for MUX-10F and Surftest SJ
937179T	Footswitch for SPC

Specifications

Power supply	220-240V 50Hz
Dimensions (WxDxH)	158 x 204 x 66 mm
Delivered	With power cable

Optional accessories

No.	Description
63AAA027	RS-232C Signal Cable, D-Sub9-D-Sub9, 2m
937179T	Footswitch for SPC

DMX-16 / DMX-16C

Series 63

- The DMX-16/16C is a micro controlled Interface for connecting 16 Digimatic output measurement devices to the RS-232C interface of a computer
- DMX-16C features integrated microprocessors for data processing, thus enabling simultaneous input and output from all measurement instruments and increasing data processing speed.
- The DMX-16 and DMX-16C provides power and an ABS/ZERO button to operate Series 575 ABS Linear Gauges



63AAA026 or 63AAA106



rear panel

No.	Type	Data input	Data output	Interface cable connection	Foot-switch connector	Remarks	Baud rate	Data bits	Stop bits	Parity
63AAA026	DMX-16	16 x Digimatic	RS-232C	D-SUB 9	Yes	successive data reception	9600	8	1	none
63AAA106	DMX-16C	16 x Digimatic	RS-232C	D-SUB 9	Yes	simultaneous data reception	9600	8	1	none

DMX-0-1 USB / DMX-3-2 USB

Series 63

These interfaces enable the connection of measuring devices with RS-232C data output (such as the Mitutoyo QM-Data 200 or LH-600) with the USB port of a computer.

- The ability to connect over 70 different measuring instruments with RS-232C output, this includes not only Mitutoyo devices but other brands as well (a list is available upon request).
- The interface converts the different signals from the connected measuring instruments into the same format: keyboard signal (HID).
- The DMX-0-1 USB has one RS-232C input while the DMX-3-2 has two RS-232C inputs and also 3 Digimatic inputs for connecting Mitutoyo handheld measuring devices.
- The DMX-3-2 additionally has a virtual COM-Port (VCP) with MUX-10 or MUX-50 format.



63AAA043



63AAA042-1



rear panel

No.	Data input	Data output	Interface cable connection	Footswitch connector	Baud rate	Data bits	Stop bits	Parity
63AAA043	1 x RS-232C	USB keyboard signal (HID)	USB Type B	Yes				
63AAA042-1	3 x Digimatic 2 x RS-232C	USB virtual COM-Port (VCP), USB keyboard signal (HID)	USB Type B	Yes	9600	8	1	none

Specifications

Power supply	220-240 V 50 Hz
Dimensions (WxDxH)	225 x 204 x 75 mm
Delivered	with power cable

Optional accessories

No.	Description
63AAA027	RS-232C Signal Cable, D-Sub9-D-Sub9, 2m
937179T	Footswitch for SPC

Specifications

Power supply	5 V from the USB
Timer function	interval 0-99 s or 0-99 min
Mitutoyo measuring instruments with RS232C output	KA-Counter Protractor Series 950 EH-Counter Printer DP1-VA Linear Height LH-600 E/EG and older LH models QM-Data 200 Litematic VL-50 Laser Scan Micrometer LSM QM-Height MF-Microscope Series PJ A3000 Projector PJ H30 Projector ID-H Indicator
OS compatibility	Microsoft® Windows® 2000, XP, Vista®, 7, 8, 8. 1, 10 (32bit, 64bit), 11
Output decimal mark (HID)	point or comma
Delivered	with 1,8 m USB cable driver software available online

Optional accessories

No.	Description
63AAA105	Link Cabel DMX-3T/FS2
937179T	Footswitch for SPC

Digimatic Timerbox

Series 63

This timerbox allows you to connect to the footswitch connector of a Mitutoyo interface to trigger data transfer, based on a time interval.

- It can be used with all Mitutoyo interfaces featuring 3,5 mm TRS Foot switch connectors (Mono) such as USB Input Tool Direct Footswitch Adapter. It works as a time-controlled footswitch.



63AAA107

Sample application with USB Input Tool Direct

No.	Delivered
63AAA107	In a carton box with USB cable (0,8 m), AC-Adapter, footswitch cable TTB1 (0,52 m)

Digimatic Switch Box

Series 63/939

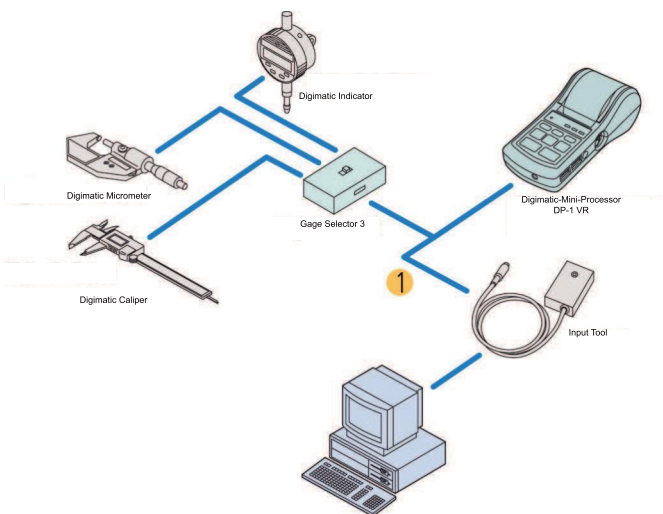
This switch box is a distribution box that connects 3 or 5 Digimatic tools to one channel interface (for example a DMX-1 USB or a USB Input Tool).



63AAA030

939039

No.	Data output	Data input	Footswitch connector	Delivered
63AAA030	1 x Digimatic (1 channel)	5 x Digimatic	Yes	In a carton box with AC-Adapter (CEE-type)
939039	1 x Digimatic (1 channel)	3 x Digimatic	No	with AC Adapter (63AAA030)



1: cable 936937 (1 m), 965014 (2 m)

Specifications

Power supply	AC-Adapter, 10 V 120 mA or 5 V from the USB
Timer function	1 s-99 h 59 min 59 s (100 h)
Timer tolerance	±8 s/24 h
Dimensions (WxDxH)	55 x 58 x 31 mm
Mass	84 g



Sample application with DMX Box

Optional accessories

No.	Description
936937	Digimatic Cable, Flat 10-Pin Type, 1 m
965014	Digimatic Cable, Flat 10-Pin Type, 2 m
937179T	Footswitch for SPC

937179T for 63AAA030 only