



TORQUE REACTION

A variety of reaction plates, manufactured in Steel or Aluminium for HandTorque®, EvoTorque®, EvoTorque® Battery Tool and PneuTorque®. Norbar also offer a range of specific reactions for the Wind Energy Generation Industry.

11	REACTION FOR HT/PTS/PTM-52 SERIES
18646	Steel Cranked Reaction for 52 mm

11	REACTION FOR ET/EBT/PTS/PTM-68 SERIES
19611	Steel Cranked Reaction for 68 mm



Steel Cranked Reaction for 68 mm Gearbox

11 SPLINED REACTION FOR HT/ET/EBT/PTS/PTM-72 & 80 SERIES

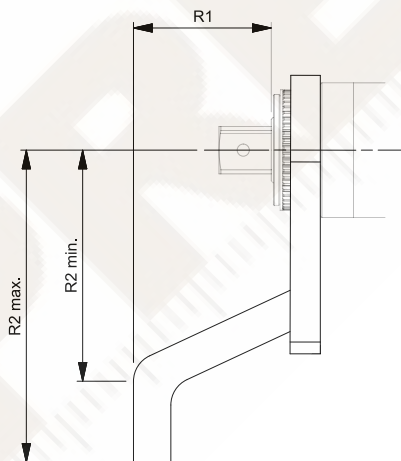
19289	Steel Cranked Reaction for 72 mm and 80 mm		18494	Aluminium Cranked Reaction for 72 mm and 80 mm	
-------	--	--	-------	--	--

11 SPLINED REACTION FOR HT/ET/EBT/PTS/PTM-92 SERIES

19291	Steel Cranked Reaction for 92 mm		18936	Aluminium Cranked Reaction for 92 mm	
-------	----------------------------------	--	-------	--------------------------------------	--

11 SPLINED REACTION FOR HT/ET/EBT/PTS/PTM-119 SERIES

19293	Steel Cranked Reaction for 119 mm (Max. 7,000 N·m)		18961	Aluminium Cranked Reaction for 119 mm (Max. 6,000 N·m)	
-------	--	--	-------	--	--



11 SPECIAL SPLINED REACTION FOR HT/ET/EBT/PTS/PTM-92 SERIES

78028	Steel Cranked Reaction for 92 mm
-------	----------------------------------

11 SPECIAL SPLINED REACTION FOR HT/ET/EBT/PTS/PTM-119 SERIES

78027	Steel Cranked Reaction for 119 mm
-------	-----------------------------------

11 SPECIAL SPLINED REACTION FOR API FLANGES

78029	HT/ET/EBT/PTS/PTM-72 & 80 Series Steel Crowfoot Reaction for 1¼" – 1½"(M30 – M39) nuts/bolts
78028	HT/ET/EBT/PTS/PTM-92 Series Steel Cranked Reaction (see image above) for 1½" – 1¾"(M42 – M48) nuts/bolts
78030	HT/ET/EBT/PTS/PTM-119 Series Steel Crowfoot Reaction for 2" – 2½"(M52 – M64) nuts/bolts

Part Number	R1	R2 min	R2 max
18646	59 mm	71 mm	131 mm
19611	75 mm	120 mm	165 mm
19289	76 mm	124 mm	167 mm
18494	68 mm	91 mm	165 mm
19291	70 mm	125 mm	175 mm
18936	87 mm	115 mm	205 mm
19293	90 mm	160 mm	210 mm
18961	118 mm	150 mm	199 mm

Part Number	R1	R2 min	R2 max
78027	90 mm	148 mm	248 mm
78028	70 mm	57 mm	145 mm
78029	76 mm	45 mm	115 mm
78030	110 mm	70 mm	156 mm



TORQUE REACTION

A variety of steel reaction plates and adaptors, together with ancillary feet, blades and heads to aid their use are available for HandTorque®, EvoTorque®, EvoTorque® Battery Tool and PneuTorque®.

11	SPECIAL SPLINED REACTION FOR RAIL
Q4714	HT/ET/EBT/PTS/PTM-52 Series Pegged Reaction Plate Max Torque 500 N·m
Q5000	HT/ET/EBT/PTS/PTM-72 Series Pegged Reaction Plate Max Torque 1,500 N·m



Q4714 Pegged Reaction Plate for rail

11	FOR HT/EBT/PTS/PTM-52 SERIES
18590	Double-Sided Reaction Plate
18576	Straight Reaction Plate
62236	Reaction Plate Spline Adaptor

11	FOR ET/EBT/PTS/PTM-68 SERIES
19783	Double-Sided Reaction Plate

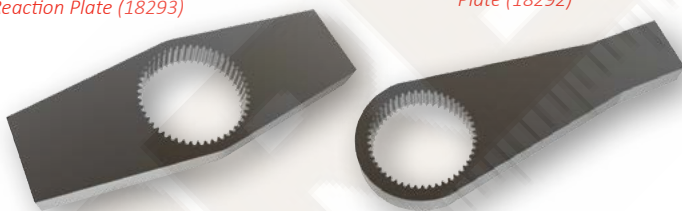
11	FOR HT/ET/EBT/PTS/PTM-72 & 80 SERIES
18293	Double-Sided Reaction Plate
18292	Straight Reaction Plate

11	FOR ET/EBT/PTS/PTM-92 SERIES
18979	Straight Reaction Plate
18980	Double-Sided Straight Reaction Plate

11	FOR ET/EBT/PTM-119 SERIES
16687	Straight Reaction Plate
18981	Double-Sided Straight Reaction Plate

Double-Sided Reaction Plate (18293)

Straight Reaction Plate (18292)



11	LIGHT-WEIGHT REACTIONS
19214	ET/EBT/PT/PTS/PTM-72 API Class 4 Light-Weight Reaction

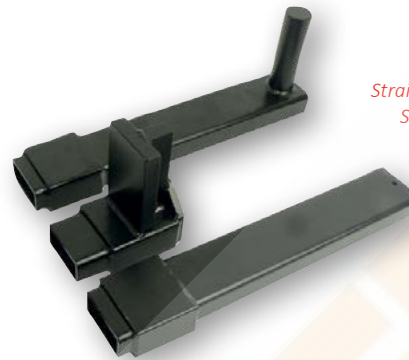


Light-Weight Reaction (19214)



Reaction Weld Ring

11	REACTION WELD RINGS
18694	For HT/EBT/PTS/PTM-52
19784	For ET/EBT/PTS/PTM-68
18695	For HT/ET/EBT/PTS/PTM-72 & 80
18696	For HT/ET/EBT/PTS/PTM-92
18697	For HT/ET/EBT/PTS/PTM-119



Straight Reaction with Peg (18298)
Short Reaction Foot (18241)
Straight Reaction (18291)

11	ANCILLARY ITEMS FOR USE WITH 18290 OR 18558
18558	Reaction Adaptor for HT/ET/EBT/PTS/PTM-52 Series
18290	Reaction Adaptor for HT/ET/EBT/PTS/PTM-72 Series
18298	Straight Reaction with Peg
18291	Straight Reaction
18241	Short Reaction Foot
18358	Sliding Reaction Blade (to be used with 18291)
18359	Sliding Reaction Spigot Head (to be used with 18291)

Sliding Reaction (180300.092.B08)



11	SLIDING REACTIONS
180300.052.B06	52 mm diameter Sliding Reaction ¾" sq.
19785.068.B06	68 mm diameter Sliding Reaction ¾" sq.
19785.068.B08	68 mm diameter Sliding Reaction 1" sq.
180300.072.B06	72 mm diameter Sliding Reaction ¾" sq.
180300.072.B08	72 mm diameter Sliding Reaction 1" sq.
180300.080.B08	80 mm diameter Sliding Reaction 1" sq.
180300.092.B08	92 mm diameter Sliding Reaction 1" sq.
180300.092.B12	92 mm diameter Sliding Reaction 1 ½" sq.
180300.119.B12	119 mm diameter Sliding Reaction 1 ½" sq.

Sliding Spigot Reaction Plate (18436)



11	FOR HT 60 / PT 4500 / PT 5500
16687	Single-Sided Straight Reaction Plate
18436	Sliding Spigot Reaction Plate

11	FOR ET/EBT/PTS/PTM-68 SERIES
19782	Single-Sided Straight Reaction Plate

11	FOR HT 30 / PT 2700
16686	Single-Sided Straight Reaction Plate



PTS™ AND PTM DUAL TRIGGER MODULE (DTM)



Dual Trigger Module (19286)

A secondary trigger for use with all PTS and PTM tools that easily attaches between the tool's air inlet port and hose. This requires the operator to use both hands to run the tool and so reduces the risk of hands getting trapped between the reaction bar and reaction point.

- Inlet ½" BSPP Female
- Outlet ½" BSPP Male



11	DUAL TRIGGER MODULE
19286	Dual Trigger Module for use with any PneuTorque

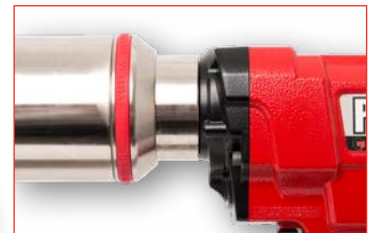
To order a pre-assembled tool add the suffix .DTM onto the end of the part number.

NOTE: When fitting a DTM the torque tool must be recalibrated with the DTM in place, contact Norbar for details.

SECONDARY HANDLE



The secondary handle is an easy to fit and versatile accessory which offers additional support and ease of handling when applying torque with Norbar's powered tools. The secondary handle is designed to fit directly to all new powered tools which have a handle location groove in the annulus which is covered by a red rubber band (see inset image to the right).



11	SECONDARY HANDLE
19363	For use with ET2/EBT/PTS/PTM 72, 92 & 119 Series
19448	For use with ET2/EBT/PTS/PTM 80 Series
Not suitable for use with ET2/EBT/PTS/PTM 52 and 68 Series	

RIGHT ANGLE GEARBOX MODULE



Right Angle Gearbox (180280)

The Right Angle Gearbox Adaptor will provide most ET, EBT, PTS™ and PTM tools with a 90° angle of operation, enabling the benefits of Norbar's pneumatic and electric torque tools to be brought to a host of applications from which they are currently excluded due to space restrictions.

- The tool handle can rotate 360° in relation to the Right Angle Gearbox allowing the most comfortable and safest position to be found
- The Right Angle Gearbox can be purchased as a stand-alone product and retrofitted to existing Norbar tools by suitably qualified technicians. Norbar recommend tool recalibration after a Right Angle Gearbox has been fitted but where this is not possible, an efficiency of 97% can be assumed.

11	RIGHT ANGLE GEARBOX
180280	Right Angle Gearbox Module



RIGHT ANGLE GEARBOX MODULE

11	EVOTORQUE 2 - 110 V - RIGHT ANGLE GEARBOX
180230.B06.RA	ET2-72-1000-110, 3/4" sq. dr., 200 - 1,000 N·m
180231.B06.RA	ET2-72-1350-110, 3/4" sq. dr., 270 - 1,350 N·m
180232.B08.RA	ET2-72-2000-110, 1" sq. dr., 400 - 2,000 N·m
180239.B08.RA	ET2-80-2700-110, 1" sq. dr., 540 - 2,700 N·m
180238.B08.RA	ET2-92-4000-110, 1" sq. dr., 800 - 4,000 N·m
180236.B12.RA	ET2-119-7000-110, 1 1/2" sq. dr., 1,400 - 7,000 N·m

11	EVOTORQUE 2 - 230 V - RIGHT ANGLE GEARBOX
180220.B06.RA	ET2-72-1000-230, 3/4" sq. dr., 200 - 1,000 N·m
180221.B06.RA	ET2-72-1350-230, 3/4" sq. dr., 270 - 1,350 N·m
180222.B08.RA	ET2-72-2000-230, 1" sq. dr., 400 - 2,000 N·m
180229.B08.RA	ET2-80-2700-230, 1" sq. dr., 540 - 2,700 N·m
180228.B08.RA	ET2-92-4000-230, 1" sq. dr., 800 - 4,000 N·m
180226.B12.RA	ET2-119-7000-230, 1 1/2" sq. dr., 1,400 - 7,000 N·m



Right Angle Gearbox fitted to EvoTorque®2



11	PTS SERIES - STALL TOOLS - BI-DIRECTIONAL - AUTO TWO SPEED - RIGHT ANGLE GEARBOX
180781.RA	3/4" sq. dr., 200 - 1,000 N·m, 147 - 738 lbf·ft
180782.RA	1" sq. dr., 270 - 1,350 N·m, 200 - 1,000 lbf·ft
180784.RA	1" sq. dr., 540 - 2,700 N·m, 398 - 1,991 lbf·ft
180785.RA	1" sq. dr., 800 - 4,000 N·m, 590 - 2,950 lbf·ft
180788.RA	1 1/2" sq. dr., 1,400 - 7,000 N·m, 1,030 - 5,200 lbf·ft



Right Angle Gearbox fitted to PTS™

11	PTS SERIES - STALL TOOLS - BI-DIRECTIONAL - SINGLE SPEED - RIGHT ANGLE GEARBOX
180241.B06.RA	3/4" sq. dr., 100 - 500 N·m, 74 - 370 lbf·ft
180242.B06.RA	3/4" sq. dr., 160 - 800 N·m, 118 - 590 lbf·ft
180243.B06.RA	3/4" sq. dr., 200 - 1,000 N·m, 147 - 738 lbf·ft
180244.B08.RA	1" sq. dr., 270 - 1,350 N·m, 200 - 1,000 lbf·ft
181454.B08.RA	1" sq. dr., 400 - 2,000 N·m, 295 - 1,475 lbf·ft
180246.B08.RA	1" sq. dr., 540 - 2,700 N·m, 398 - 1,991 lbf·ft
180250.B08.RA	1" sq. dr., 800 - 4,000 N·m, 590 - 2,950 lbf·ft
180249.B12.RA	1 1/2" sq. dr., 1,400 - 7,000 N·m, 1,030 - 5,200 lbf·ft

13	EBT SERIES - SINGLE SPEED - 'SAFE TO START' - RIGHT ANGLE GEARBOX
180353	3/4" sq. dr., 160 - 800 N·m, 118 - 600 lbf·ft, Kit
180449*	1" sq. dr., 200 - 1,350 N·m, 150 - 1,000 lbf·ft, Kit
180497	1" sq. dr., 400 - 2,000 N·m, 295 - 1,475 lbf·ft, Kit
180545	1" sq. dr., 400 - 2,700 N·m, 295 - 2,000 lbf·ft, Kit
180641	1" sq. dr., 800 - 4,000 N·m, 590 - 2,950 lbf·ft, Kit

13	EBT SERIES - AUTO TWO SPEED - 'SAFE TO START' - RIGHT ANGLE GEARBOX
180473*	1" sq. dr., 338 - 1,350 N·m, 250 - 1,000 lbf·ft, Kit
180569	1" sq. dr., 676 - 2,700 N·m, 499 - 2,000 lbf·ft, Kit
180665	1" sq. dr., 1,000 - 4,000 N·m, 738 - 2,950 lbf·ft, Kit

*1,350 N·m models come supplied with both 3/4" and 1" sq. dr.



Right Angle Gearbox fitted to EBT



LUBRO CONTROL UNITS



Lubro Control Unit, part number 16074

Norbar's standard filter, regulator, lubricator unit 16074 features a 100 mm diameter gauge for easy and accurate setting of air pressure with ergonomic placement of air pressure adjustment control. Supplied with 3 metres of robust, steel braided air hose with fittings to connect to PneuTorque® wrenches.

Twin Regulator Lubro Control Unit, part number 16075

The 'Twin Lubro' has the same features as Norbar's standard filter, regulator, lubricator unit but has the benefit of two regulators and a switch that allows quick selection between two air pressure settings. A typical application for this would be a PneuTorque® user wishing to quickly select between two applications requiring different torque settings. For example, this might be controlled torque in the forward direction and maximum torque allowed by the tool in the reverse direction.



16074



16075

11	LUBRO CONTROL UNITS
16074	Lubro Control Unit with 3 m hose
60339	MPa only gauged Lubro Control Unit with 3 m hose
16075	Twin Lubro Control Unit with 3 m hose

See page page 134 for Lubro Control Unit spares.

SOCKET RETAINERS



These socket retaining clips make attaching sockets to square drives easy and quick.

8	SOCKET RETAINING CLIPS
19556	Socket Retaining Clip for 3/4" sq. dr. (Yellow) - Pack of 10
19557	Socket Retaining Clip for 1" sq. dr. (Red) - Pack of 10
19558	Socket Retaining Clip for 1 1/2" sq. dr. (Green) - Pack of 10
19559	Socket Retaining Clip for 2 1/2" sq. dr. (Blue) - Pack of 10



This product is intended for general purpose use at ground level. It is not intended as a solution for socket retention when working at height or where FOD (foreign object damage) could cause a safety and/or commercial risk.

Not recommended for use with impact tools.