



SPANNER END FITTINGS FOR 16 mm TORQUE HANDLES

See below for explanation of part numbers. Other sizes available on request – including bespoke ETO solutions.

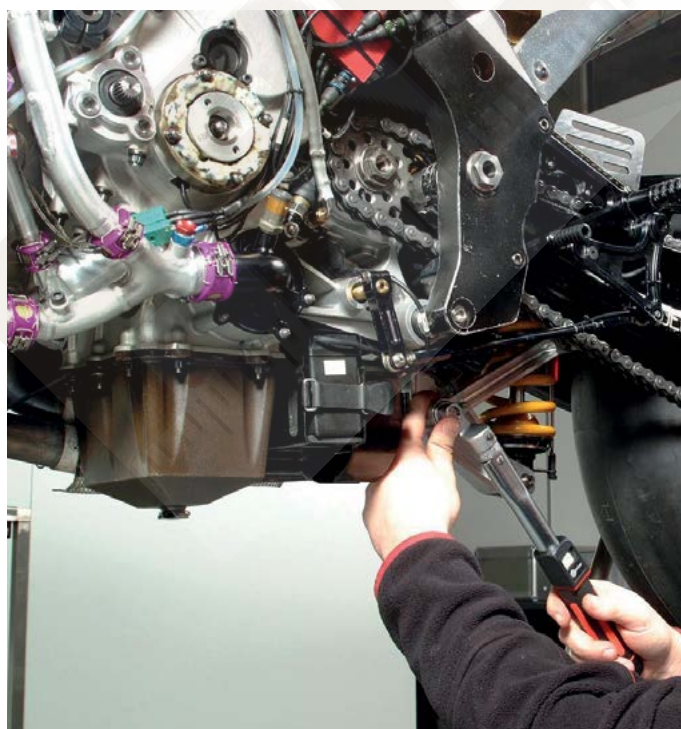


2	OPEN ENDS METRIC
297102.M07	7 mm, 9 N·m*
297102.M08	8 mm, 13 N·m*
297102.M09	9 mm, 18 N·m*
297102.M10	10 mm, 24 N·m*
297102.M11	11 mm, 32 N·m*
297102.M12	12 mm, 41 N·m*
297102.M13	13 mm, 51 N·m*
297102.M14	14 mm, 63 N·m*
297102.M15	15 mm, 77 N·m*
297102.M16	16 mm, 92 N·m*
297102.M17	17 mm, 109 N·m*
297102.M18	18 mm, 125 N·m*
297102.M19	19 mm, 145 N·m*
297102.M20	20 mm, 160 N·m*
297102.M21	21 mm, 190 N·m*
297102.M22	22 mm, 220 N·m*
297102.M23	23 mm, 250 N·m*
297102.M24	24 mm, 280 N·m*
297102.M25	25 mm, 320 N·m*
297102.M26	26 mm, 360 N·m*
297102.M27	27 mm, 360 N·m*
297102.M28	28 mm, 360 N·m*
297102.M30	30 mm, 360 N·m*
297102.M32	32 mm, 360 N·m*
297102.M36	36 mm, 360 N·m*

2	OPEN ENDS IMPERIAL
297102.I05	5/16", 34 N·m*
297102.I06	3/8", 45 N·m*
297102.I07	7/16", 72 N·m*
297102.I08	1/2", 51 N·m*
297102.I09	9/16", 77 N·m*
297102.I10	5/8", 92 N·m*
297102.I11	11/16", 109 N·m*
297102.I12	3/4", 145 N·m*
297102.I13	13/16", 190 N·m*
297102.I14	7/8", 220 N·m*
297102.I15	15/16", 280 N·m*
297102.I16	1", 360 N·m*
297102.I17	1 1/16", 360 N·m*
297102.I18	1 1/8", 360 N·m*
297102.I19	1 3/16", 360 N·m*
297102.I20	1 1/4", 360 N·m*

2	RING ENDS METRIC
297103.M07	7 mm, 25 N·m*
297103.M08	8 mm, 34 N·m*
297103.M09	9 mm, 45 N·m*
297103.M10	10 mm, 58 N·m*
297103.M11	11 mm, 72 N·m*
297103.M12	12 mm, 89 N·m*
297103.M13	13 mm, 105 N·m*
297103.M14	14 mm, 125 N·m*
297103.M15	15 mm, 150 N·m*
297103.M16	16 mm, 175 N·m*
297103.M17	17 mm, 200 N·m*
297103.M18	18 mm, 230 N·m*
297103.M19	19 mm, 260 N·m*
297103.M20	20 mm, 290 N·m*
297103.M21	21 mm, 330 N·m*
297103.M22	22 mm, 360 N·m*
297103.M23	23 mm, 360 N·m*
297103.M24	24 mm, 360 N·m*
297103.M26	26 mm, 360 N·m*
297103.M27	27 mm, 360 N·m*

2	RING ENDS IMPERIAL
297103.I05	5/16", 34 N·m*
297103.I06	3/8", 58 N·m*
297103.I07	7/16", 89 N·m*
297103.I08	1/2", 105 N·m*
297103.I09	9/16", 125 N·m*
297103.I10	5/8", 125 N·m*
297103.I11	11/16", 125 N·m*
297103.I12	3/4", 260 N·m*
297103.I13	13/16", 290 N·m*
297103.I14	7/8", 360 N·m*
297103.I15	15/16", 360 N·m*
297103.I16	1", 360 N·m*
297103.I17	1 1/16", 360 N·m*
297103.I19	1 3/16", 360 N·m*



2	FLARE ENDS METRIC
297104.M07	7 mm, 6 N·m*
297104.M08	8 mm, 8 N·m*
297104.M09	9 mm, 10 N·m*
297104.M10	10 mm, 12 N·m*
297104.M11	11 mm, 16 N·m*
297104.M12	12 mm, 16 N·m*
297104.M13	13 mm, 28 N·m*
297104.M14	14 mm, 31 N·m*
297104.M15	15 mm, 38 N·m*
297104.M16	16 mm, 46 N·m*
297104.M17	17 mm, 53 N·m*
297104.M18	18 mm, 65 N·m*
297104.M19	19 mm, 74 N·m*
297104.M20	20 mm, 86 N·m*
297104.M21	21 mm, 100 N·m*
297104.M22	22 mm, 115 N·m*
297104.M23	23 mm, 125 N·m*
297104.M24	24 mm, 145 N·m*
297104.M27	27 mm, 160 N·m*

* Max torque values listed are proof torques quoted in BS 192:1982 & BS 3555:1988 (tested on hardened hexagon stud).



SPANNER END FITTINGS FOR 22 mm TORQUE HANDLES

See below for explanation of part numbers. Other sizes available on request – including bespoke ETO solutions.



2	OPEN ENDS METRIC
299600.M22	22 mm Open End, Max 1,200 N-m
299600.M24	24 mm Open End, Max 1,200 N-m
299600.M27	27 mm Open End, Max 1,200 N-m
299600.M30	30 mm Open End, Max 1,200 N-m
299600.M32	32 mm Open End, Max 1,200 N-m
299600.M34	34 mm Open End, Max 1,200 N-m
299600.M36	36 mm Open End, Max 1,200 N-m
299600.M41	41 mm Open End, Max 1,200 N-m
299600.M46	46 mm Open End, Max 1,200 N-m



2	RING ENDS METRIC
299601.M22	22 mm Ring End, Max 1,200 N-m
299601.M24	24 mm Ring End, Max 1,200 N-m
299601.M27	27 mm Ring End, Max 1,200 N-m
299601.M30	30 mm Ring End, Max 1,200 N-m
299601.M32	32 mm Ring End, Max 1,200 N-m
299601.M34	34 mm Ring End, Max 1,200 N-m
299601.M36	36 mm Ring End, Max 1,200 N-m
299601.M41	41 mm Ring End, Max 1,200 N-m
299601.M46	46 mm Ring End, Max 1,200 N-m



SPIGOT ACCESSORIES



2	16 mm SPIGOT ACCESSORIES
44509	3/8" Ratchet with Push-through square
29825	1/2" Ratchet with Push-through square
44510	1/2" Ratchet with Push-through square for NorTronic
29828	3/8" Fixed Square Drive
29827	1/2" Fixed Square Drive
29829	3/8" Reversible Ratchet Head
29830	1/2" Reversible Ratchet Head
29832	Blank End Fitting
85242	Blank End Fitting for Open End
11343	Blank End Fitting for Ring End
72000	Spigot Adaptor 16 mm female to 22 mm male
297105.I04	1/4" Square Drive Fixed Head



2	22 mm SPIGOT ACCESSORIES
299602.I12	3/4" Square Drive Fixed Head
29972	3/4" Ratchet with Push-through square
85719	Blank End Fitting for Open End
85720	Blank End Fitting for Ring End

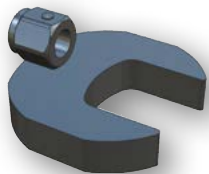




TORQUE WRENCH END FITTINGS

LARGE SPANNER END FITTINGS FOR 16 mm SPIGOT TORQUE HANDLES UP TO 300 N·m

See below for explanation of part numbers. Other sizes available on request – including bespoke ETO solutions.

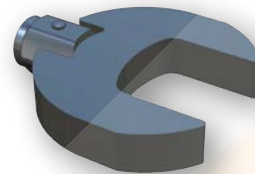


8 OPEN OFFSET
METRIC 16 mm

29218.OO.Mxx | 30 - 80 mm

8 OPEN OFFSET
IMPERIAL 16 mm

29218.OO.lxx | 1 3/16" - 3 1/4"

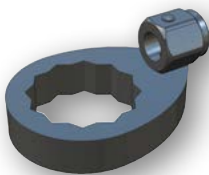


8 OPEN INLINE
METRIC 16 mm

29218.OI.Mxx | 30 - 80 mm

8 OPEN INLINE
IMPERIAL 16 mm

29218.OI.lxx | 1 3/16" - 3 1/4"

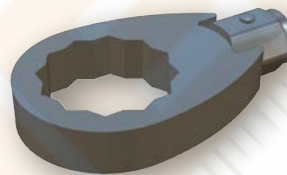


8 RING OFFSET
METRIC 16 mm

29218.RO.Mxx | 30 - 80 mm

8 RING OFFSET
IMPERIAL 16 mm

29218.RO.lxx | 1 3/16" - 3 1/4"

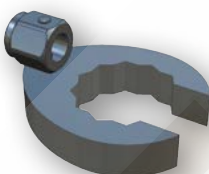


8 RING INLINE
METRIC 16 mm

29218.RI.Mxx | 30 - 80 mm

8 RING INLINE
IMPERIAL 16 mm

29218.RI.lxx | 1 3/16" - 3 1/4"

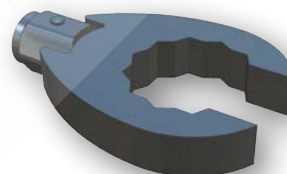


8 FLARE OFFSET
METRIC 16 mm

29218.FO.Mxx | 11 - 80 mm

8 FLARE OFFSET
IMPERIAL 16 mm

29218.FO.lxx | 1 3/16" - 3 1/4"

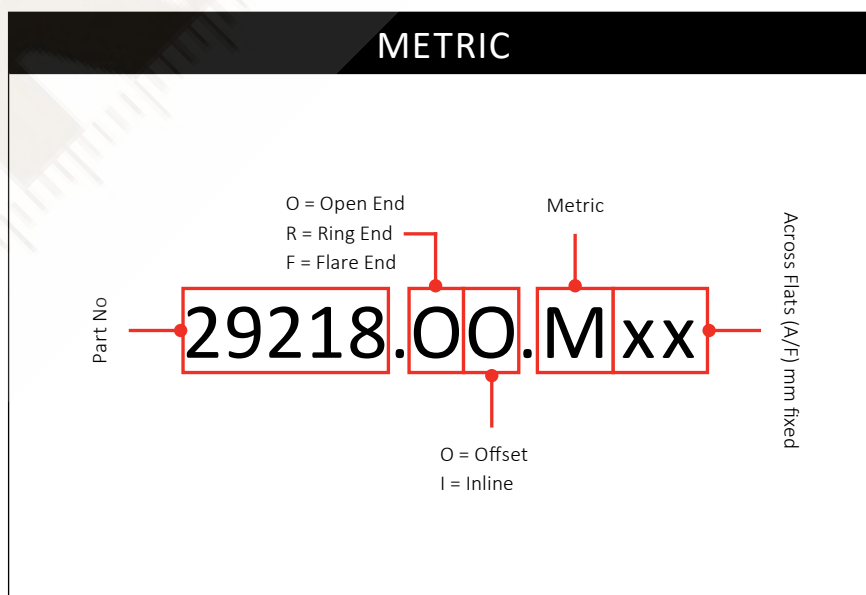


8 FLARE INLINE
METRIC 16 mm

29218.FI.Mxx | 30 - 80 mm

8 FLARE INLINE
IMPERIAL 16 mm

29218.FI.lxx | 1 3/16" - 3 1/4"



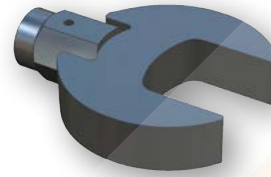


LARGE SPANNER END FITTINGS FOR 22 mm SPIGOT TORQUE HANDLES UP TO 650 N·m

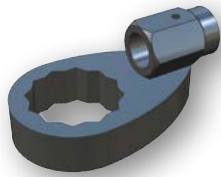
See below for explanation of part numbers. Other sizes available on request – including bespoke ETO solutions.



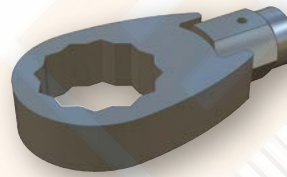
8	OPEN OFFSET METRIC 22 mm	8	OPEN OFFSET IMPERIAL 22 mm
29219.OO.Mxx	30 - 80 mm	29219.OO.lxx	1 3/16" - 3 1/4"



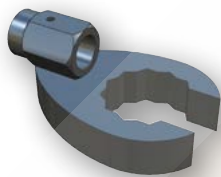
8	OPEN INLINE METRIC 22 mm	8	OPEN INLINE IMPERIAL 22 mm
29219.OI.Mxx	30 - 80 mm	29219.OI.lxx	1 3/16" - 3 1/4"



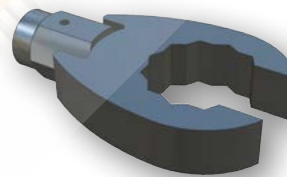
8	RING OFFSET METRIC 22 mm	8	RING OFFSET IMPERIAL 22 mm
29219.RO.Mxx	30 - 80 mm	29219.RO.lxx	1 3/16" - 3 1/4"



8	RING INLINE METRIC 22 mm	8	RING INLINE IMPERIAL 22 mm
29219.RI.Mxx	30 - 80 mm	29219.RI.lxx	1 3/16" - 3 1/4"

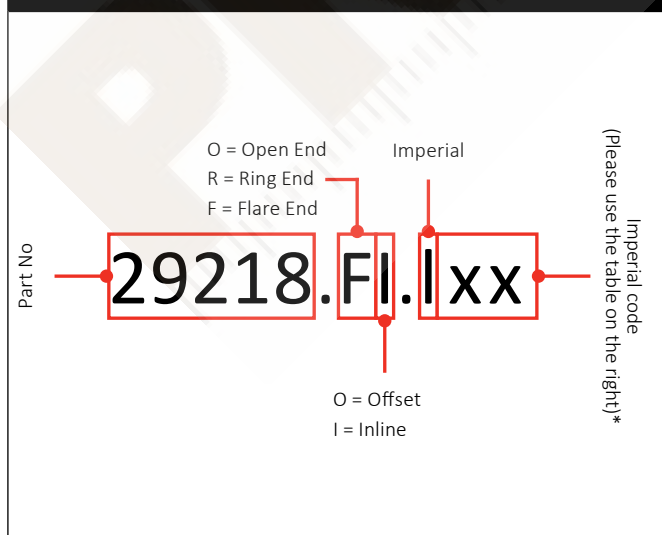


8	FLARE OFFSET METRIC 22 mm	8	FLARE OFFSET IMPERIAL 22 mm
29219.FO.Mxx	30 - 80 mm	29219.FO.lxx	1 3/16" - 3 1/4"



8	FLARE INLINE METRIC 22 mm	8	FLARE INLINE IMPERIAL 22 mm
29219.FI.Mxx	30 - 80 mm	29219.FI.lxx	1 3/16" - 3 1/4"

IMPERIAL



IMPERIAL A/F	CODE	IMPERIAL A/F	CODE	IMPERIAL A/F	CODE
1 3/16"	19	1 15/16"	31	2 11/16"	43
1 1/4"	20	2"	32	2 3/4"	44
1 5/16"	21	2 1/16"	33	2 13/16"	45
1 3/8"	22	2 1/8"	34	2 7/8"	46
1 7/16"	23	2 3/16"	35	2 15/16"	47
1 1/2"	24	2 1/4"	36	3"	48
1 9/16"	25	2 5/16"	37	3 1/16"	49
1 5/8"	26	2 3/8"	38	3 1/8"	50
1 11/16"	27	2 7/16"	39	3 3/16"	51
1 3/4"	28	2 1/2"	40	3 1/4"	52
1 13/16"	29	2 9/16"	41		
1 7/8"	30	2 5/8"	42		

*Example: 1 7/8" open end inline for 22 mm spigot = 29219.OI.I30