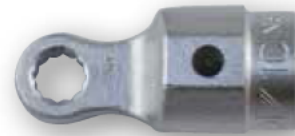




## SPANNER END FITTINGS FOR NORBAR 16 mm TORQUE HANDLES

On this page you will find our standard range of end fittings.  
For other sizes, see page 35 & 36.



2	OPEN ENDS METRIC	2	OPEN ENDS IMPERIAL
29841	7 mm, 9 N·m*	29701	¼", 7 N·m*
29842	8 mm, 13 N·m*	29702	⅜", 13 N·m*
29843	9 mm, 19 N·m*	29703	½", 21 N·m*
29844	10 mm, 25 N·m*	29704	⅞", 32 N·m*
29845	11 mm, 32 N·m*	29705	1", 48 N·m*
29846	12 mm, 41 N·m*	29706	⅞", 67 N·m*
29847	13 mm, 51 N·m*	29707	⅝", 90 N·m*
29848	14 mm, 63 N·m*	29708	1¼", 118 N·m*
29849	15 mm, 77 N·m*	29709	¾", 150 N·m*
29850	16 mm, 92 N·m*	29710	1⅜", 187 N·m*
29851	17 mm, 107 N·m*	29711	⅞", 230 N·m*
29876	18 mm, 128 N·m*	29712	1⅝", 281 N·m*
29877	19 mm, 149 N·m*	29713	1", 330 N·m*
29852	20 mm, 172 N·m*	29714	1 ⅜", 330 N·m*
29853	21 mm, 198 N·m*	29715	1 ⅝", 330 N·m*
29854	22 mm, 225 N·m*	29716	1 ¾", 330 N·m*
29855	23 mm, 255 N·m*	29717	1 ⅞", 330 N·m*
29856	24 mm, 287 N·m*	29718	1 ⅝", 330 N·m*
29857	25 mm, 322 N·m*		
29858	26 mm, 330 N·m*		
29878	27 mm, 330 N·m*		
29860	29 mm, 330 N·m*		
29861	30 mm, 330 N·m*		
29863	32 mm, 330 N·m*		
297100	36 mm, 330 N·m*		

2	RING ENDS METRIC	2	RING ENDS IMPERIAL
29881	7 mm, 25 N·m*	29726	¼", 25 N·m*
29882	8 mm, 35 N·m*	29727	⅜", 35 N·m*
29883	9 mm, 45 N·m*	29728	½", 42 N·m*
29884	10 mm, 52 N·m*	29729	⅞", 73 N·m*
29885	11 mm, 73 N·m*	29730	1", 115 N·m*
29886	12 mm, 89 N·m*	29731	⅞", 170 N·m*
29887	13 mm, 107 N·m*	29732	⅝", 226 N·m*
29888	14 mm, 128 N·m*	29733	1¼", 260 N·m*
29889	15 mm, 150 N·m*	29734	¾", 305 N·m*
29890	16 mm, 175 N·m*	29735	1⅜", 330 N·m*
29891	17 mm, 201 N·m*	29736	⅞", 330 N·m*
29913	18 mm, 230 N·m*	29737	1⅝", 330 N·m*
29914	19 mm, 261 N·m*	29738	1", 330 N·m*
29892	20 mm, 294 N·m*	29739	1 ⅜", 330 N·m*
29893	21 mm, 330 N·m*		
29894	22 mm, 330 N·m*		
29895	23 mm, 330 N·m*		
29896	24 mm, 330 N·m*		
29915	27 mm, 330 N·m*		



2	FLARE ENDS METRIC
29921	7 mm, 7 N·m*
29922	8 mm, 6 N·m*
29923	9 mm, 5 N·m*
29924	10 mm, 26 N·m*
29925	11 mm, 19 N·m*
29926	12 mm, 13 N·m*
29927	13 mm, 34 N·m*
29928	14 mm, 24 N·m*
29929	15 mm, 18 N·m*
29930	16 mm, 66 N·m*
29931	17 mm, 56 N·m*
29953	18 mm, 45 N·m*
29954	19 mm, 80 N·m*
29932	20 mm, 60 N·m*
29933	21 mm, 43 N·m*
29934	22 mm, 172 N·m*
29935	23 mm, 153 N·m*
29936	24 mm, 118 N·m*
29955	27 mm, 76 N·m*

\* Max torque values listed are proof torques quoted in BS 192:1982 & BS 3555:1988 (tested on hardened hexagon test stud).



**SPANNER END FITTINGS FOR NORBAR 22 mm TORQUE HANDLES**

On this page you will find our standard range of end fittings.  
For other sizes, see page 35 & 36.



2	OPEN ENDS METRIC
29963.22	22 mm Open End
29963.24	24 mm Open End
29963.27	27 mm Open End
29963.30	30 mm Open End
29963.32	32 mm Open End
29963.36	36 mm Open End
29963.41	41 mm Open End
29963.46	46 mm Open End



2	RING ENDS METRIC
29960.22	22 mm Ring End
29960.24	24 mm Ring End
29960.27	27 mm Ring End
29960.30	30 mm Ring End
29960.32	32 mm Ring End
29960.36	36 mm Ring End
29960.41	41 mm Ring End
29960.46	46 mm Ring End



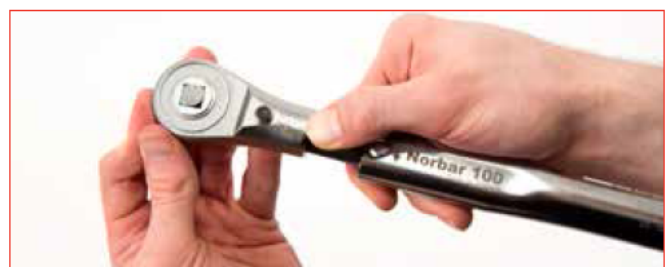
**SPIGOT ACCESSORIES**



2	16 mm SPIGOT ACCESSORIES
44509	3/8" Ratchet with Push-through square
29825	1/2" Ratchet with Push-through square
44510	1/2" Ratchet with Push-through square for NorTronic
29828	3/8" Fixed Square Drive
29827	1/2" Fixed Square Drive
29829	3/8" Reversible Ratchet Head
29830	1/2" Reversible Ratchet Head
29832	Blank End Fitting
85242	Blank End Fitting for Open End
11343	Blank End Fitting for Ring End
72000	Spigot Adaptor 16 mm female to 22 mm male



2	22 mm SPIGOT ACCESSORIES
29969	3/4" Square Drive Fixed Head
29972	3/4" Ratchet with Push-through square
85719	Blank End Fitting for Open End
85720	Blank End Fitting for Ring End





## LARGE SPANNER END FITTINGS FOR NORBAR 16 mm SPIGOT TORQUE HANDLES UP TO 300 N·m

See below for explanation of part numbers. Other sizes available on request – including bespoke ETO solutions.



2 OPEN OFFSET  
METRIC 16 mm

29218.OO.Mxx | 30 - 80 mm

2 OPEN OFFSET  
IMPERIAL 16 mm

29218.OO.lxx | 1 3/16" - 3 1/4"



2 OPEN INLINE  
METRIC 16 mm

29218.OI.Mxx | 30 - 80 mm

2 OPEN INLINE  
IMPERIAL 16 mm

29218.OI.lxx | 1 3/16" - 3 1/4"

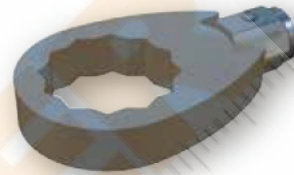


2 RING OFFSET  
METRIC 16 mm

29218.RO.Mxx | 30 - 80 mm

2 RING OFFSET  
IMPERIAL 16 mm

29218.RO.lxx | 1 3/16" - 3 1/4"



2 RING INLINE  
METRIC 16 mm

29218.RI.Mxx | 30 - 80 mm

2 RING INLINE  
IMPERIAL 16 mm

29218.RI.lxx | 1 3/16" - 3 1/4"



2 FLARE OFFSET  
METRIC 16 mm

29218.FO.Mxx | 30 - 80 mm

2 FLARE OFFSET  
IMPERIAL 16 mm

29218.FO.lxx | 1 3/16" - 3 1/4"



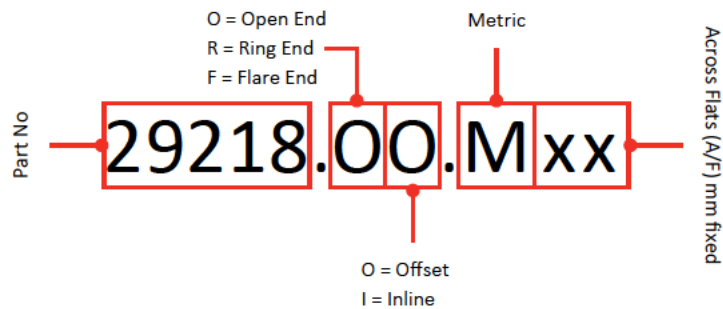
2 FLARE INLINE  
METRIC 16 mm

29218.FI.Mxx | 30 - 80 mm

2 FLARE INLINE  
IMPERIAL 16 mm

29218.FI.lxx | 1 3/16" - 3 1/4"

### METRIC







LARGE SPANNER END FITTINGS FOR NORBAR 22 mm SPIGOT TORQUE HANDLES UP TO 650 N·m

See below for explanation of part numbers. Other sizes available on request – including bespoke ETO solutions.



2 OPEN OFFSET  
METRIC 22 mm

29219.OO.Mxx | 30 - 80 mm

2 OPEN OFFSET  
IMPERIAL 22 mm

29219.OO.lxx | 1 3/16" - 3 1/4"



2 OPEN INLINE  
METRIC 22 mm

29219.OI.Mxx | 30 - 80 mm

2 OPEN INLINE  
IMPERIAL 22 mm

29219.OI.lxx | 1 3/16" - 3 1/4"

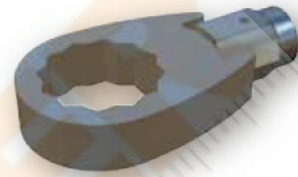


2 RING OFFSET  
METRIC 22 mm

29219.RO.Mxx | 30 - 80 mm

2 RING OFFSET  
IMPERIAL 22 mm

29219.RO.lxx | 1 3/16" - 3 1/4"



2 RING INLINE  
METRIC 22 mm

29219.RI.Mxx | 30 - 80 mm

2 RING INLINE  
IMPERIAL 22 mm

29219.RI.lxx | 1 3/16" - 3 1/4"

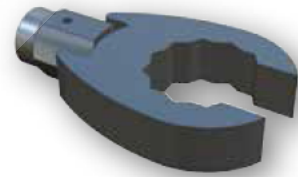


2 FLARE OFFSET  
METRIC 22 mm

29219.FO.Mxx | 30 - 80 mm

2 FLARE OFFSET  
IMPERIAL 22 mm

29219.FO.lxx | 1 3/16" - 3 1/4"



2 FLARE INLINE  
METRIC 22 mm

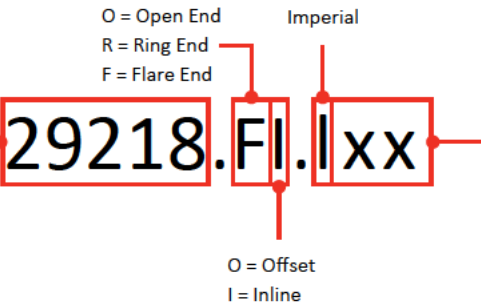
29219.FI.Mxx | 30 - 80 mm

2 FLARE INLINE  
IMPERIAL 22 mm

29219.FI.lxx | 1 3/16" - 3 1/4"

IMPERIAL

Part No



(please use the table on the right)\*  
Imperial code

IMPERIAL A/F	CODE	IMPERIAL A/F	CODE	IMPERIAL A/F	CODE
1 3/16"	19	1 15/16"	31	2 11/16"	43
1 1/4"	20	2"	32	2 3/4"	44
1 5/16"	21	2 1/16"	33	2 13/16"	45
1 3/8"	22	2 1/8"	34	2 7/8"	46
1 7/16"	23	2 3/16"	35	2 15/16"	47
1 1/2"	24	2 1/4"	36	3"	48
1 9/16"	25	2 5/16"	37	3 1/16"	49
1 5/8"	26	2 3/8"	38	3 1/8"	50
1 11/16"	27	2 7/16"	39	3 3/16"	51
1 3/4"	28	2 1/2"	40	3 1/4"	52
1 13/16"	29	2 9/16"	41		
1 7/8"	30	2 5/8"	42		

\*Example: 1 7/8" open inline for 22 mm Spigot = 29219.OI.I30