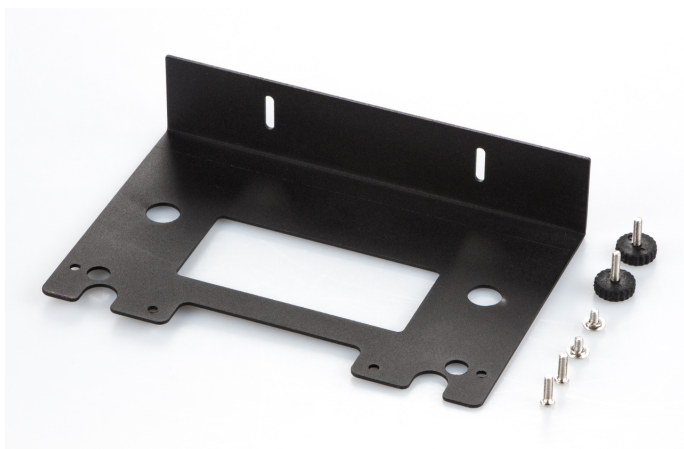


# KERN DE-A11N

Mount for display device

**KERN**



## Category

Brand	KERN
Product category	Balance
Product group	Mounting plate

## Construction

Dimension (W×D×H)	200×100×40 mm
Material	steel, lacquered

## Environmental conditions

Storage temperature [Min]	-20 °C
Storage temperature [Max]	60 °C

## Packing & Shipping

Readability force [d] (N)	1 d
Dimensions packaging (W×D×H)	205×154×45 mm
Net weight	0,385 kg
Shipping method	Parcel service
Net weight approx.	0,40 kg
Gross weight approx.	0,45 kg
Shipping weight	0,45 kg

## Pictograms

STANDARD

